

Jackson Twp
~~See next page~~



Document 07-3582

Book 2 Page 581 Type 15 001 Pages 1

Date 8/10/2007 Time 11:40 AM

Rec Amt \$7.00

ARLENE SCHAUF, RECORDER
JACKSON COUNTY IOWA

Prepared by Wm. Burger LandSurveyors 510 3rd Street West Court, Worthington, Iowa 52078 Phone 563 - 855 2028

UNITED STATES PUBLIC LAND SURVEY CORNER CERTIFICATE

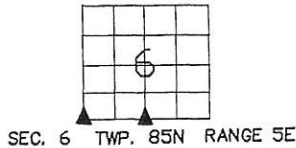
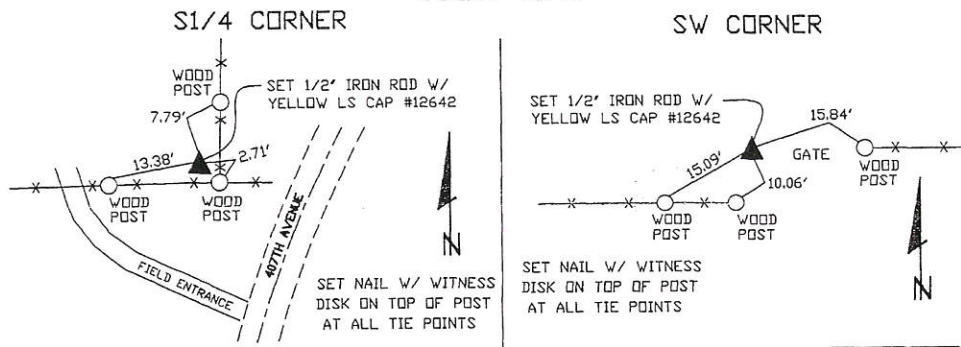
Land Survey Monuments situated in Section 6, Township 85N, Range 5E, of the Fifth Principal Meridian, Jackson County, Iowa. Previously recorded in N/A in the Office of the County Recorder

Monument Description and Remarks: (No Corner Certificates found at the County Recorders Office)

S1/4 CORNER - SET 1/2' IRON ROD W/ YELLOW LS CAP #12642 - SET ON LINE AND DOUBLED THE DISTANCE DOWN FROM THE CENTER OF SECTION TO THE SE CORNER OF THE NE1/4 OF THE SW1/4

SW CORNER - SET 1/2' IRON ROD W/ YELLOW LS CAP #12642 - USED EXISTING FENCELINE EVIDENCE TO SET THIS CORNER

PLAN VIEW



CORNERS TO BE INDEXED

S1/4 CORNER	6	85N	5E
SW CORNER	6	85N	5E



I hereby certify that this land surveying document was prepared and related survey work was performed by me or under my direct personal supervision and that I am a duly licensed Land Surveyor under the laws of the State of Iowa.

William H. Burger 8/7/07
William H. Burger Date

License number 12642

My license renewal date is December 31, 2008

Pages or Sheets covered by this seal: Sheet 1 of 1

Book 2 Page 581



Document 10-1923

Book 2 Page 714 Type 15 001 Pages 1

Date 5/20/2010 Time 2:06 PM

Rec Amt \$9.00

ARLENE SCHAUF, RECORDER/REGISTRAR
JACKSON COUNTY IOWA

Prepared by Wm. Burger LandSurveyor

510 3rd Street West Court, Worthington, Iowa 52078

Phone 563 - 855 2028

UNITED STATES PUBLIC LAND SURVEY CORNER CERTIFICATE

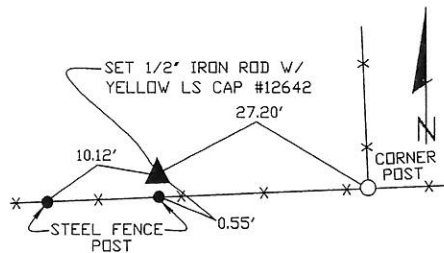
Land Survey Monuments situated in Section 6, Township 85N, Range 5E, of the Fifth Principal Meridian, Jackson County, Iowa. Previously recorded in N/A in the Office of the County Recorder

Monument Description and Remarks: (No Corner Certificates found at the County Recorders Office)

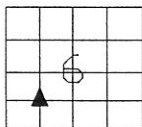
NE CORNER SW1/4 SW1/4 - SET 1/2" IRON ROD W/ YELLOW LS CAP #12642 - RUN STRAIGHT LINES FROM OPPOSITE 1/4 1/4 CORNERS AND SET AT INTERSECTION

PLAN VIEW

NE CORNER SW1/4 SW1/4



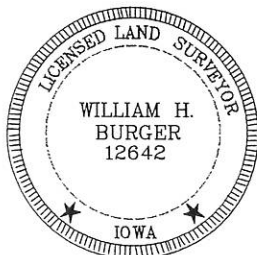
SET NAIL W/ WITNESS
DISK AT ALL TIE POINTS



SEC. 6 TWP. 85N RANGE 5E

CORNERS TO BE INDEXED

NE CORNER SW1/4 SW1/4 6 85N 5E



I hereby certify that this land surveying document was prepared and related survey work was performed by me or under my direct personal supervision and that I am a duly licensed Land Surveyor under the laws of the State of Iowa.

William H. Burger 4/23/10
William H. Burger Date

License number 12642

My license renewal date is December 31, 2010

Pages or Sheets covered by this seal: Sheet 1 of 1

Book 2 Page 714



Document 12-3529

Book 3 Page 63 Type 15 001 Pages 1
Date 8/24/2012 Time 9:25 AM
Rec Amt \$7.00

ARLENE SCHAUF, RECORDER/REGISTRAR
JACKSON COUNTY IOWA

Prepared by Wm. Burger Land Surveyor 510 3rd Street West Court, Worthington, Iowa 52078 Phone 563 - 855 2028

UNITED STATES PUBLIC LAND SURVEY CORNER CERTIFICATE

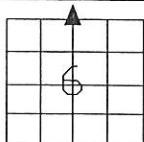
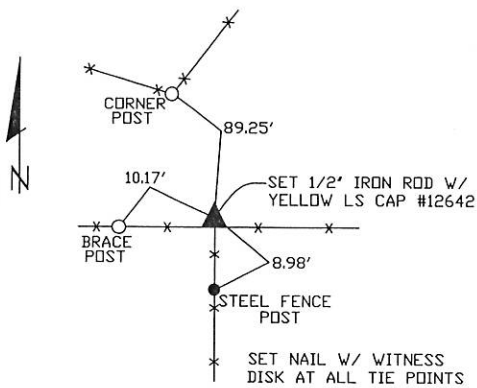
Land Survey Monuments situated in Section 6, Township 85N, Range 5E, of the Fifth Principal Meridian, Jackson County, Iowa. Previously recorded in N/A in the Office of the County Recorder

Monument Description and Remarks: (No Corner Certificates found at the County Recorders Office)

N1/4 CORNER - SET 1/2" IRON ROD W/ YELLOW LS CAP #12642 - USED EXISTING FENCELINE EVIDENCE AND SET AT CORNER POST

N1/4 CORNER

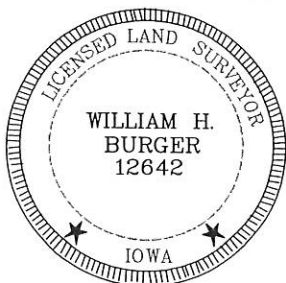
PLAN VIEW



SEC. 6 TWP. 85N RANGE 5E

CORNERS TO BE INDEXED

N1/4 CORNER 6 85N 5E



I hereby certify that this land surveying document was prepared and related survey work was performed by me or under my direct personal supervision and that I am a duly licensed Land Surveyor under the laws of the State of Iowa.

William H. Burger 8/10/12
William H. Burger Date

License number 12642

My license renewal date is December 31, 2012

Pages or Sheets covered by this seal: Sheet 1 of 1



Document 14-2033

Book 3 Page 140 Type 15 001 Pages 1

Date 6/20/2014 Time 10:23 AM

Rec Amt \$7.00

ARLENE SCHAUF, RECORDER/REGISTRAR
JACKSON COUNTY IOWA

Prepared by Wm. Burger Land Surveyor 510 3rd Street West Court, Worthington, Iowa 52070 Phone 563 - 855 2028

UNITED STATES PUBLIC LAND SURVEY CORNER CERTIFICATE

Land Survey Monuments situated in Section 6, Township 85N, Range 5E, of the Fifth Principal Meridian, Jackson County, Iowa. Previously recorded in N/A in the Office of the County Recorder

Monument Description and Remarks: (No Corner Certificates found at the County Recorders Office)

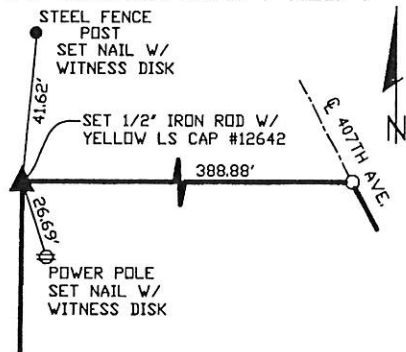
NW CORNER SW1/4 NE1/4 - SET 1/2" IRON ROD W/ YELLOW LS CAP #12642 - SET ON LINE BETWEEN THE CENTER OF SECTION AND THE NE1/4 CORNER AND SET AT A PROPORTIONATE DISTANCE

E1/4 CORNER - SET 1/2" IRON ROD W/ YELLOW LS CAP #12642 - USED EXISTING FENCELINE EVIDENCE AND SET AT EXISTING CORNER POST

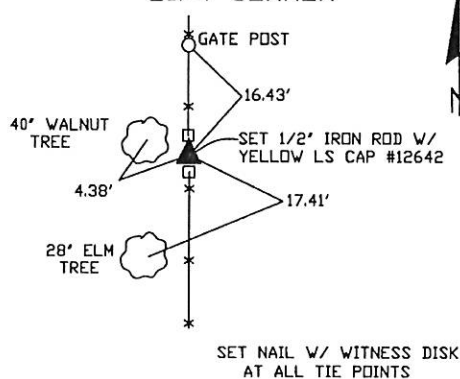
CENTER OF SECTION - SET 1/2" IRON ROD W/ YELLOW LS CAP #12642 - USED EXISTING FENCELINE EVIDENCE AND SET AT EXISTING CORNER POST

PLAN VIEW

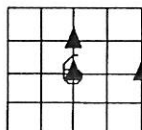
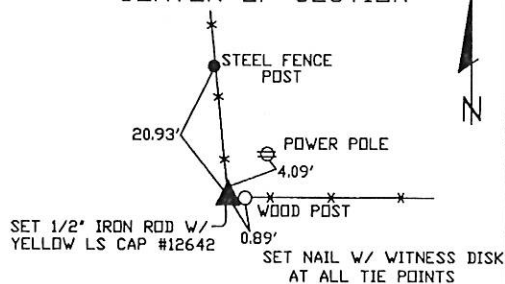
NW CORNER SW1/4 NE1/4



E1/4 CORNER



CENTER OF SECTION



SEC. 6 TWP. 85N RANGE 5E

CORNERS TO BE INDEXED

NW CORNER SW1/4 NE1/4	6	85N	5E
E1/4 CORNER	6	85N	5E
CENTER OF SECTION	6	85N	5E



I hereby certify that this land surveying document was prepared and related survey work was performed by me or under my direct personal supervision and that I am a duly licensed Land Surveyor under the laws of the State of Iowa.

William H. Burger 6/20/14
William H. Burger Date

License number 12642

My license renewal date is December 31, 2014

Pages or Sheets covered by this seal: Sheet 1 of 1