

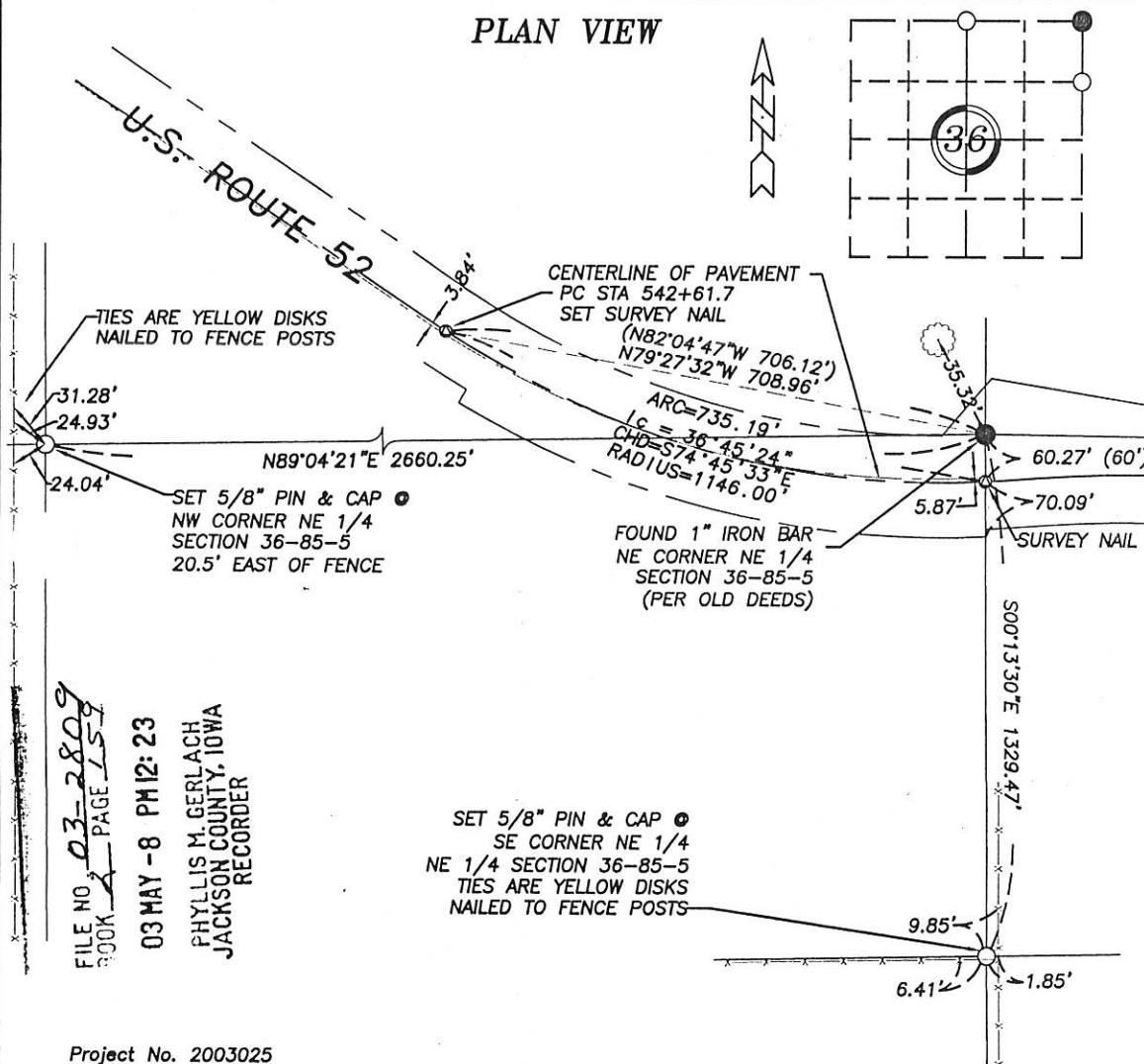
UNITED STATES PUBLIC LAND SURVEY CORNER CERTIFICATE OF

and Survey Monuments in Section 36 in Township 85 North (T85N), Range 5 East (R5E)
the Fifth Principal Meridian (5th PM), Jackson County, Iowa. (Not Previously Recorded)

A Monument was placed at the Southeast corner of the Northeast Quarter (NE 1/4) of the Northeast Quarter (NE 1/4), and the Northwest corner of the Northeast Quarter (NE 1/4), and a monument was found at the Northeast corner of the Northeast Quarter (NE 1/4) of the Northeast Quarter (NE 1/4) of Section 36 per the descriptions below.

Corners were found or established at prorata locations using existing monuments, fences and occupation lines within this and adjoining Sections.

PLAN VIEW



Project No. 2003025

I hereby certify that the survey work was completed
and this land surveying document was prepared by
me or under my direct personal supervision and
that I am a duly registered land surveyor under the
laws of the State of Iowa.

Signature: William E. Holt

William E. Holt
Iowa Registration No. 14105

My Registration Renews on December 31, 2004

Dated this 6th day of May, 2003 C.E.



Corners to be Indexed

Corner	Section	Township	Range
NE Corner NE 1/4 NE 1/4	36	85N	5E
SE Corner NE 1/4 NE 1/4	36	85N	5E
NW Corner NE 1/4	36	85N	5E

PREPARED BY:
HINKLE ENGINEERING & SURVEYING
2100 CAMANCHE AVE.
CLINTON, IA 52732
PHONE (563) 243-4027
FAX (563) 243-4029



Document 08-4167

Book 2 Page 637 Type 15 001 Pages 1
Date 11/06/2008 Time 12:35 PM
Rec Amt \$7.00

ARLENE SCHAUF, RECORDER/REGISTRAR
JACKSON COUNTY IOWA

UNITED STATES PUBLIC LAND SURVEY CORNER CERTIFICATE OF

Land Survey Monuments situated in Section 36, Township 85 N, Range 5 E, of the Fifth Principle Meridian, JACKSON County, Iowa.
Previously recorded in DOES NOT APPLY in County Recorder's Office.
(book, page, document number, etc.)

(Show reason for preparing this certificate, the evidence and detailed procedures used in establishing the corner positions and monumentation found or placed.)

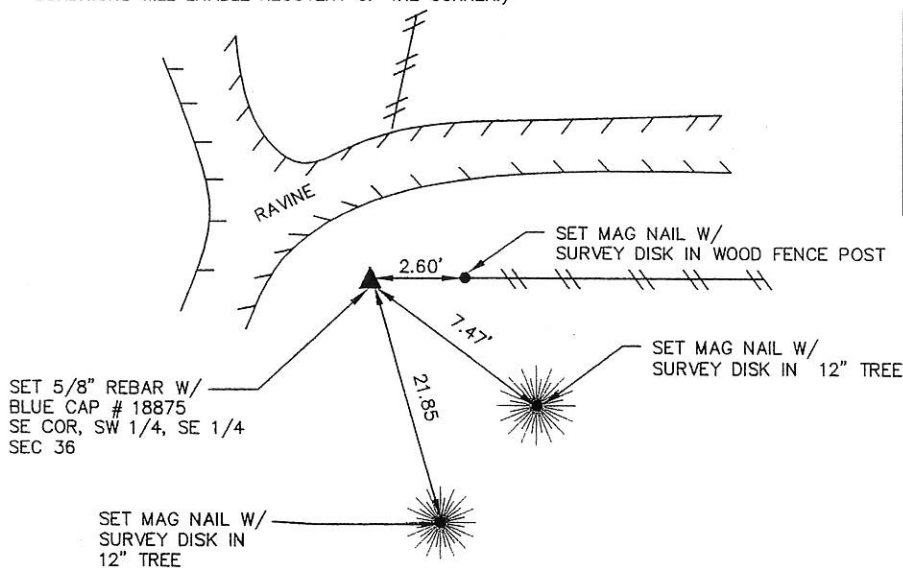
Monument Description and Remarks: SET 5/8" REBAR WITH BLUE CAP # 18875 AT THE S.E. COR., S.W. 1/4, S.E. 1/4, SEC. 36. SET REBAR ON LINE WITH THE FENCE TO THE EAST AND TO THE NORTH.

PREPARED CERTIFICATE BECAUSE THERE WAS NOT ONE ON FILE AT THE COUNTY RECORDER'S OFFICE.

JOB # 08-0583, VOLQUARDSEN FARM SURVEY 4

PLAN-VIEW

(Show A MINIMUM OF THREE REFERENCE TIES TO DURABLE PHYSICAL OBJECTS, RELEVANT MONUMENTS AND PHYSICAL CONDITIONS WILL ENABLE RECOVERY OF THE CORNER.)



I hereby certify that the survey work was completed and this land surveying document was prepared by me or under my direct personal supervision and that I am a duly licensed land surveyor under the laws of the state of Iowa

Signature: Douglas M Hinkle
Name typed or printed: DOUGLAS M HINKLE

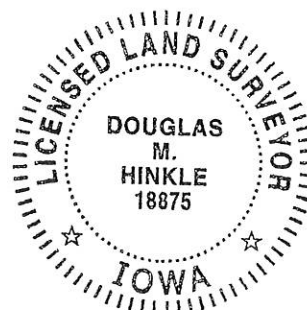
Date: 11/4/2008 Reg. No. 18875

My registration renewal date is December 31, 2009

SEAL

List Corners to be Indexed

Corners	Section	Twp	Range
SE COR	36	85 NORTH	5 EAST
SW 1/4			
SE 1/4			



Book 2 Page 637

PREPARED BY:
HINKLE ENGINEERING & SURVEYING
2100 CAMANCHE AVE.
CLINTON, IA 52732
PHONE (563) 243-4027
FAX (563) 243-4029



Document 08-4168

Book 2 Page 638 Type 15 001 Pages 1
Date 11/06/2008 Time 12:36 PM
Rec Amt \$7.00

ARLENE SCHAUF, RECORDER/REGISTRAR
JACKSON COUNTY IOWA

UNITED STATES PUBLIC LAND SURVEY CORNER CERTIFICATE OF

Land Survey Monuments situated in Section 36, Township 85 N, Range 5 E, of the Fifth Principle Meridian, JACKSON County, Iowa.
Previously recorded in DOES NOT APPLY in County Recorder's Office.
(book, page, document number, etc.)

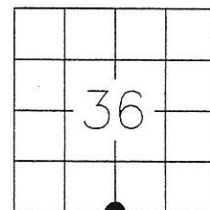
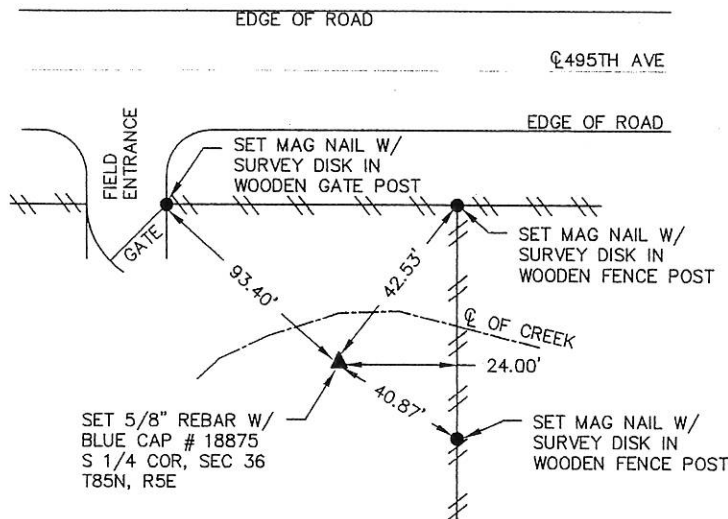
(Show reason for preparing this certificate, the evidence and detailed procedures used in establishing the corner positions and monumentation found or placed.)

Monument Description and Remarks: SEARCHED 20' RADIUS W/ MAGNETIC LOCATOR. SET S 1/4 COR BY USING LOCAL RESIDENCE TESTIMONY AND ALIGNMENT OF OLD FENCES. PREPARED CERTIFICATE BECAUSE THERE WAS NOT ONE ON FILE AT THE RECORDER'S OFFICE.

JOB # 08-0583, VOLQUARDSSEN FARM SURVEY 4

PLAN-VIEW

(Show A MINIMUM OF THREE REFERENCE TIES TO DURABLE PHYSICAL OBJECTS, RELEVANT MONUMENTS AND PHYSICAL CONDITIONS WILL ENABLE RECOVERY OF THE CORNER.)



DRAWING NOT TO SCALE

I hereby certify that the survey work was completed and this land surveying document was prepared by me or under my direct personal supervision and that I am a duly licensed land surveyor under the laws of the state of Iowa

Signature: D. M. Hinkle
Name typed or printed: DOUGLAS M HINKLE

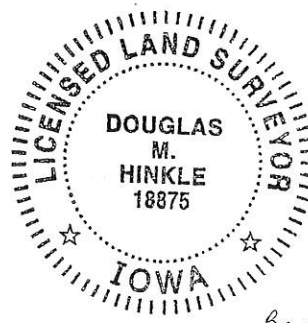
Date: 11/4/2008 Reg. No. 18875

My registration renewal date is December 31, 2009

SEAL

List Corners to be Indexed

Corners	Section	Twp	Range
S 1/4 COR	36	85 NORTH	5 EAST



Book 2 Page 638



Document 09-181

Book 2 Page 650 Type 15 001 Pages 1
Date 1/16/2009 Time 11:15 AM
Rec Amt \$7.00

ARLENE SCHAUF, RECORDER/REGISTRAR
JACKSON COUNTY IOWA

Prepared by: SCHNEIDER Land Surveying and Planning, Inc. P.O. Box 128 Farley, Iowa 52046 563-744-3631

UNITED STATES PUBLIC LAND SURVEY CORNER CERTIFICATE OF

Land Survey Monuments situated in Section 36, Township 85 North, Range 5 East
of the Fifth Principal Meridian, Jackson County, Iowa.
Previously recorded IN S.C.C. BOOK 2, PAGE 159 (N1/4 CORNER)
(BOOK, PAGE / INSTR. NO. / CABINET, SLIDE)

(Show reason for preparing this certificate, the evidence and detailed procedures used in establishing the corner positions and monumentation found or placed.)

Monument Description and Remarks: THE SW CORNER OF THE NW1/4 OF THE NE1/4 OF SECTION 36, T85N, R5E
WAS ESTABLISHED BASED ON OCCUPATION EVIDENCE LOCATED NORTH, SOUTH, EAST AND WEST OF THE CORNER.

A 5/8" REBAR W/ CAP #14105 WAS FOUND 20.0' TO THE EAST OF A NORTH AND SOUTH OCCUPATION FENCE AND AT AN
EQUALLY PROPORTIONED DISTANCE BETWEEN THE NORTHEAST CORNER OF SAID SECTION 36 AND A 5/8" REBAR FOUND
IN AN OCCUPATION FENCE APPROXIMATELY A QUARTER MILE WEST OF THE N1/4 CORNER. THIS POINT WAS PREVIOUSLY TIED
AS THE N1/4 CORNER OF SECTION 36, T85N, R5E IN SECTION CORNER CERTIFICATE BOOK 2, PAGE 159. THE N1/4 CORNER OF
SEC. 36, T85N, R5E WAS REESTABLISHED AND RETIED TO ALIGN WITH OCCUPATION EVIDENCE LOCATED NORTH AND SOUTH OF THE
CORNER.

PLAN - VIEW

(Show a minimum of three reference ties to durable physical objects, relevant monuments and physical conditions that will enable recovery of the corner.)

FOUND
YELLOW
DISC ON
R.R. TIE
BRACE POST

FOUND
YELLOW
DISC ON
R.R. TIE
FENCE POST

SET 'X'
NAILS IN
GATE POST

SET 'X'
NAILS IN
CORNER POST

FOUND
YELLOW
DISC ON
R.R. TIE
BRACE POST

24.59'

15.17'

10.24'

3.88'

20.00'

FOUND 5/8"
REBAR W/
CAP #14105

N1/4 CORNER
SEC. 36, T85N, R5E
SET 1/2" REBAR
W/ YELLOW CAP
#14417 - 20.0'
WEST OF A FOUND
5/8" REBAR
W/ CAP #14105
(SCC BOOK 2,
PAGE 159)

SW CORNER
NW1/4, NE1/4,
SEC. 36, T85N, R5E
SET 1/2" REBAR W/
YELLOW CAP #14417

SET 'X'
NAILS IN
R.R. TIE
BRACE POST

SET 'X'
NAILS IN
R.R. TIE
FENCE POST

SET 'X'
NAILS IN
FENCE POST

SET 'X'
NAILS IN
4" POPLAR
TREE

11.11'

2.46'

I hereby certify that this land surveying document was prepared and the related survey work was performed by me or under my direct personal supervision and that I am a duly licensed Land Surveyor under the laws of the State of Iowa.

David P. Schneider 1/12/2009
David P. Schneider P.L.S. #14417 Date:
My license renewal date is December 31, 2009.

Pages or sheets covered by this seal: THIS SHEET ONLY

SCHNEIDER
Land Surveying & Planning, Inc.
P.O. Box 128 Farley, Iowa 52046
Ph. #563-744-3631 Fax #563-744-3629



List Corners to be Indexed

Corners	Section	Twp	Range
N1/4 CORNER	36	85N	5E
SW CORNER NW1/4, NE1/4	36	85N	5E

Book 2 Page 650 JOB NO. 1260