

99 0270

FILE NO. \_\_\_\_\_  
BOOK 1 PAGE 361

1999 JAN 20 A 10:00

Prepared by: SCHNEIDER Land Surveying and Planning 2640 J.F.K. Rd Dubuque, Iowa 319-556-9055

**UNITED STATES PUBLIC LAND SURVEY CORNER CERTIFICATE OF**Land Survey Monuments situated in Section 31, Township 85 North, Range 5 East of the Fifth Principal Meridian, Jackson County, Iowa.  
Previously recorded

(Show reason for preparing this certificate, the evidence and detailed procedures used in establishing the corner positions and monumentation found or placed.)

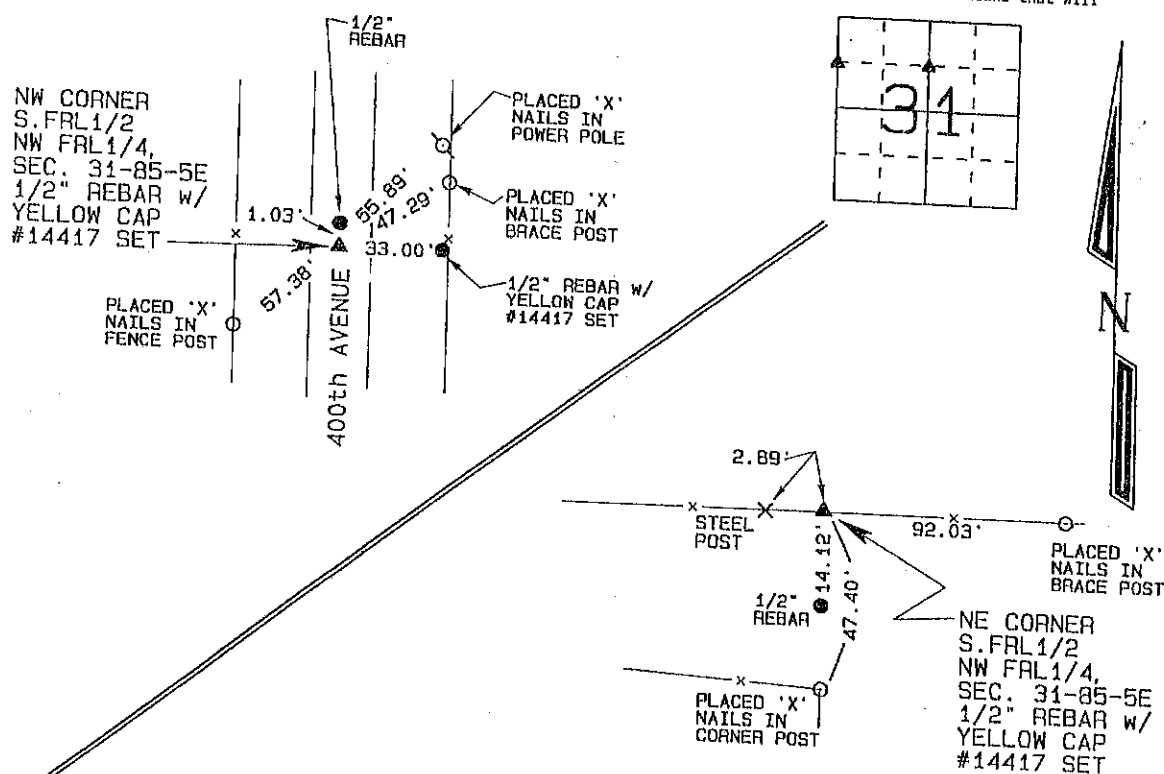
**Monument Description and Remarks:**

NW corner, S. FRL 1/2 of the NW FRL 1/4, Section 31 was established using the existing fence line to the east and a straight line from the NW corner of Section 31 to the W 1/4 corner of Section 31.

NE corner, S. FRL 1/2 of the NW FRL 1/4, Section 31 was established using the existing occupation fences running east-west and south of the corner.

**PLAN - VIEW**

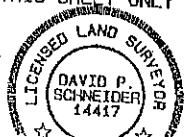
(Show a minimum of three reference ties to durable physical objects, relevant monuments and physical conditions that will enable recovery of the corner.)



I hereby certify that this land surveying document was prepared and the related survey work was performed by me or under my direct personal supervision and that I am a duly licensed Land Surveyor under the laws of the State of Iowa.

David P. Schneider P.L.S. #14417 Date: 1/17/99  
My license renewal date is December 31, 1999.  
Pages or sheets covered by this seal: THIS SHEET ONLY

SEAL

**List Corners to be Indexed**

Corner	Section	Twp	Range
NW Corner S FRL 1/2 NW FRL 1/4	Section 31	Twp 85 N	Range 5 E
NE Corner S FRL 1/2 NW FRL 1/4	Section 31	Twp 85 N	Range 5 E



Document 24-1497

Type 15 001

Pages 1

Date 6/11/2024 Time 9:48 AM

Rec Amt \$7.00

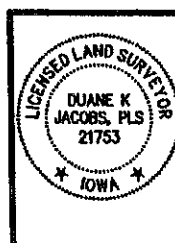
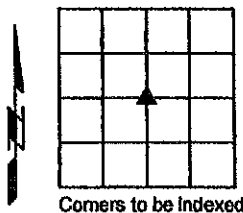
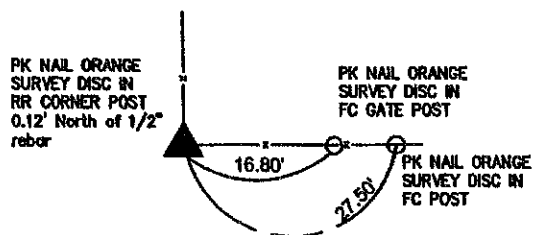
ARLENE SCHAUF, RECORDER/REGISTRAR  
JACKSON COUNTY IOWA

### UNITED STATES PUBLIC LAND SURVEY CORNER CERTIFICATE

Land Survey Monuments Situated in Fractional Section 31, Township 85 North, Range 5 East of the Fifth Principal Meridian, Jackson County, Iowa.

Narrative: CENTER: Set monument at intersection of fence to North & fence to East on South side railroad corner post.  
No previous ties recorded.

*Center of Fr. SEC. 31*



I hereby certify that this land surveying document was prepared and the related survey work was performed by me or under my direct personal supervision and that I am a duly licensed Land Surveyor under the Laws of the State of Iowa.

*Duane Jacobs* 6/3/24  
(signature) (date)

DUANE K JACOBS, PLS  
License number: 21753

My license renewal date is December 31, 2024  
Pages or sheets covered by this sect: 1