

UNITED STATES PUBLIC LAND SURVEY CORNER CERTIFICATE

OF

Land Survey Monuments situated in Section 30, Township 85N, Range SE, of the Fifth Principal Meridian, Jackson County, Iowa.
 Previously recorded in N/A (book, page, document number, etc.) in County Recorder's Office.

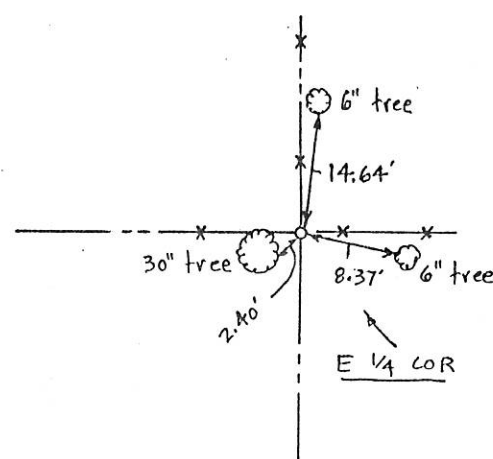
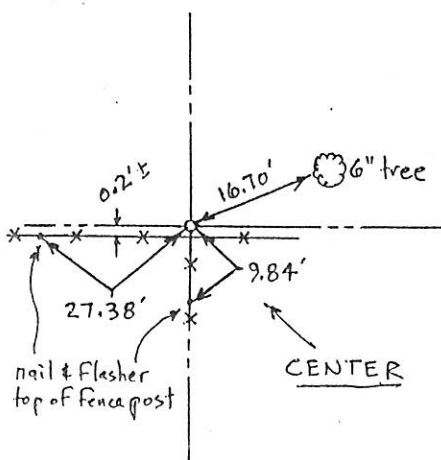
(Show reason for preparing this certificate, the evidence and detailed procedures used in establishing the corner positions and monumentation found or placed.)

Monument Description and Remarks: 5/8" rebar at center & E 1/4 corner

-all ties are nails & flashers

PLAN - VIEW

(Show a minimum of three reference ties to durable physical objects, relevant monuments and physical conditions that will enable recovery of the corner.)



I hereby certify that the survey work was completed and this certificate was prepared by me or under my direct personal supervision and that I am a duly registered land surveyor under the laws of the state of Iowa.

Signature: LaVerne F. VanderSchaaf
 Name typed or printed: LaVerne F. VanderSchaaf
 Date: April 20, 1992 Reg. No. #11084

SEAL



Corners	List Corners to be Indexed Section	Twp	Range
center	30	85N	SE
E 1/4 cor	30	85N	SE

FILE NO. 2881
 BOOK 1 PAGE 85

1992 MAY 19 AM 8:55

SHIRLY RITENOUR
 JACKSON COUNTY, IOWA
 RECORDER

5.00