

UNITED STATES PUBLIC LAND SURVEY CORNER CERTIFICATE

OF

Land Survey Monuments situated in Section 29, Township 85N, Range SE, of the Fifth Principal Meridian, Jackson County, Iowa.
 Previously recorded in N/A (book, page, document number, etc.) in County Recorder's Office.

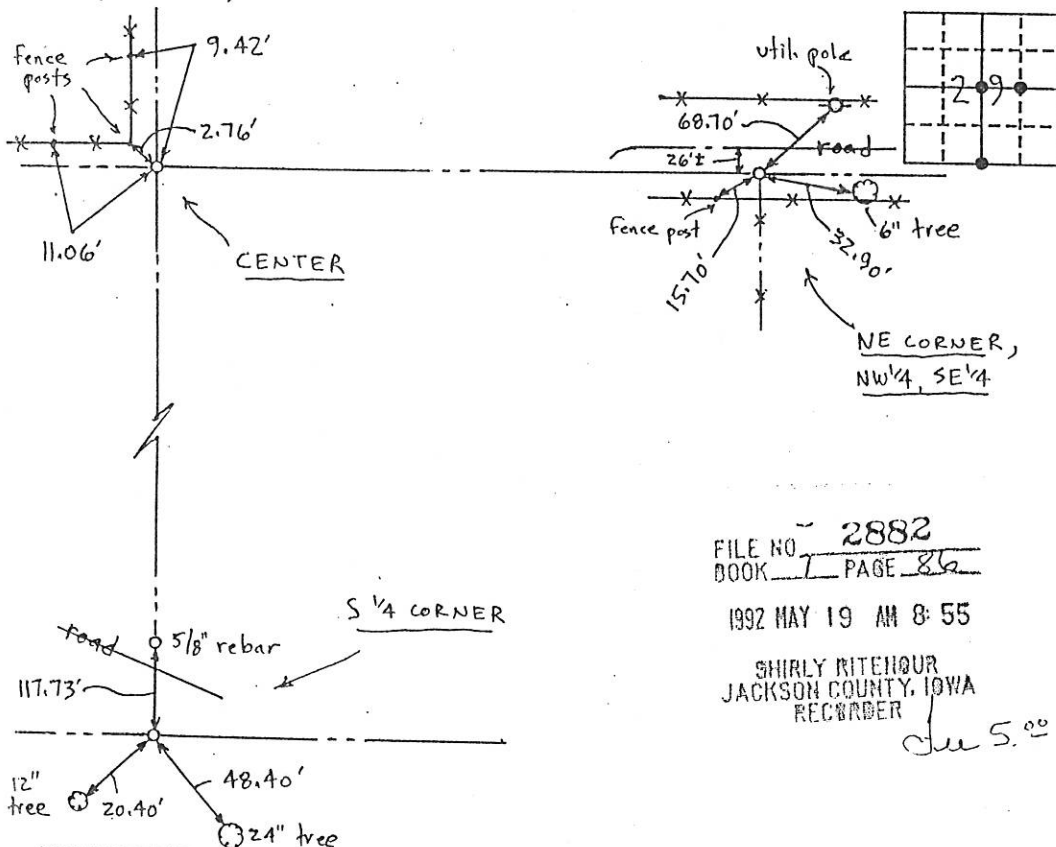
(Show reason for preparing this certificate, the evidence and detailed procedures used in establishing the corner positions and monumentation found or placed.)

Monument Description and Remarks: 5/8" rebar at center, S 1/4 corner & NE corner of NW 1/4 of SE 1/4

- all ties are nails & flashers unless noted otherwise

PLAN - VIEW

(Show a minimum of three reference ties to durable physical objects, relevant monuments and physical conditions that will enable recovery of the corner.)



FILE NO. 2882
 BOOK 1 PAGE 86

1992 MAY 19 AM 8:55

SHIRLY RITENOUR
 JACKSON COUNTY, IOWA
 RECORDER

See 5.00

I hereby certify that the survey work was completed and this certificate was prepared by me or under my direct personal supervision and that I am a duly registered land surveyor under the laws of the state of Iowa.

Signature: LaVerne F. VanderSchaaf
 Name typed or printed: LaVerne F. VanderSchaaf

Date: April 20, 1992 Reg. No. #11084

SEAL



Corners	List Corners to be Indexed	Section	Twp	Range
center	29	85N	SE	
S 1/4 cor.	29	85N	SE	
NE cor, NW 1/4, SE 1/4	29	85N	SE	



Document 09-4372

Book 2 Page 688 Type 15 001 Pages 1

Date 11/10/2009 Time 3:12 PM

Rec Amt \$9.00

ARLENE SCHAUF, RECORDER/REGISTRAR
JACKSON COUNTY IOWA

Prepared by Wm. Burger Land Surveyor 510 3rd Street West Court, Northington, Iowa Phone 563 - 855 2028

UNITED STATES PUBLIC LAND SURVEY CORNER CERTIFICATELand Survey Monuments situated in Section 29, Township 85N, Range 5E, of the Fifth Principal Meridian, Jackson County, Iowa. Previously recorded in SEE NOTE in the Office of the County Recorder

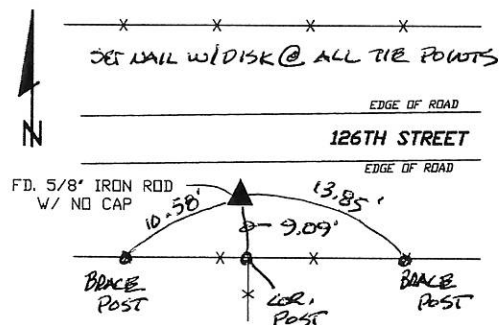
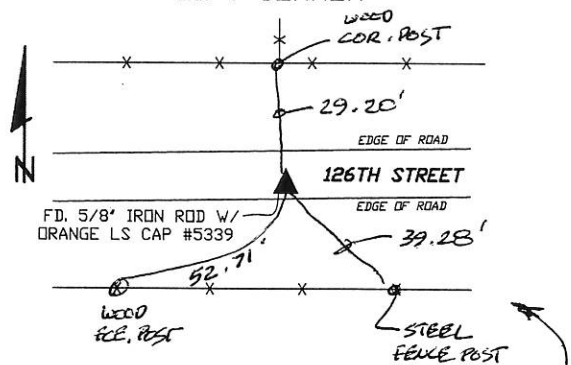
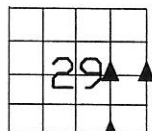
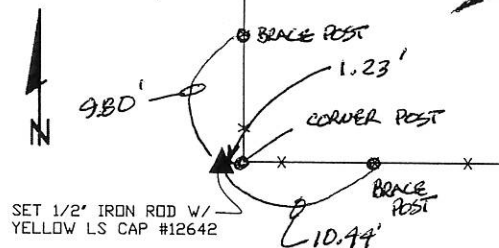
Monument Description and Remarks:

NW CORNER NE1/4 SE1/4 - FOUND 5/8" IRON ROD WITH NO CAP

E1/4 CORNER - FOUND 5/8" IRON ROD WITH ORANGE LS CAP #5339

SW CORNER SE1/4 SE1/4 - SET 1/2" IRON ROD WITH YELLOW LS CAP #12642 - USED EXISTING FENCE LINE EVIDENCE AND INFORMATION FROM A PLAT PREVIOUSLY RECORDED IN THE OFFICE OF THE JACKSON COUNTY RECORDER IN BOOK 1-H, PAGE 8

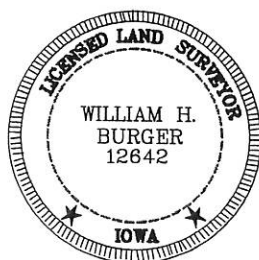
NOTE: THE NW CORNER NE1/4 SE1/4 WAS PREVIOUSLY RECORDED IN THE OFFICE OF THE JACKSON COUNTY RECORDER IN BOOK 1, PAGE 86 - E1/4 COR. PREVIOUSLY RECORDED IN BOOK 2, PAGE 258

PLAN VIEW**NW CORNER NE1/4 SE1/4****E1/4 CORNER****SW CORNER SE1/4 SE1/4**

SEC. 29 TWP. 85N RANGE 5E

CORNERS TO BE INDEXED

NW CORNER NE1/4 SE1/4	29	85N	5E
E1/4 CORNER	29	85N	5E
SW CORNER SE1/4 SE1/4	29	85N	5E



I hereby certify that this land surveying document was prepared and related survey work was performed by me or under my direct personal supervision and that I am a duly licensed Land Surveyor under the laws of the State of Iowa.

William H. Burger 11/4/09
William H. Burger Date

License number 12642

My license renewal date is December 31, 2010

Pages or Sheets covered by this seal: Sheet 1 of 1