



Document 21-5073

Type 15 001 Pages 1
Date 12/10/2021 Time 10:45 AM
Rec Amt \$7.00

ARLENE SCHAUF, RECORDER/REGISTRAR
JACKSON COUNTY IOWA

PREPARED BY/RETURN TO: MIDLAND SURVEYING, INC. 501 N. MARKET ST. MARYVILLE, MO 64468 (660) 582-8633

UNITED STATES PUBLIC LAND SURVEY CORNER CERTIFICATE

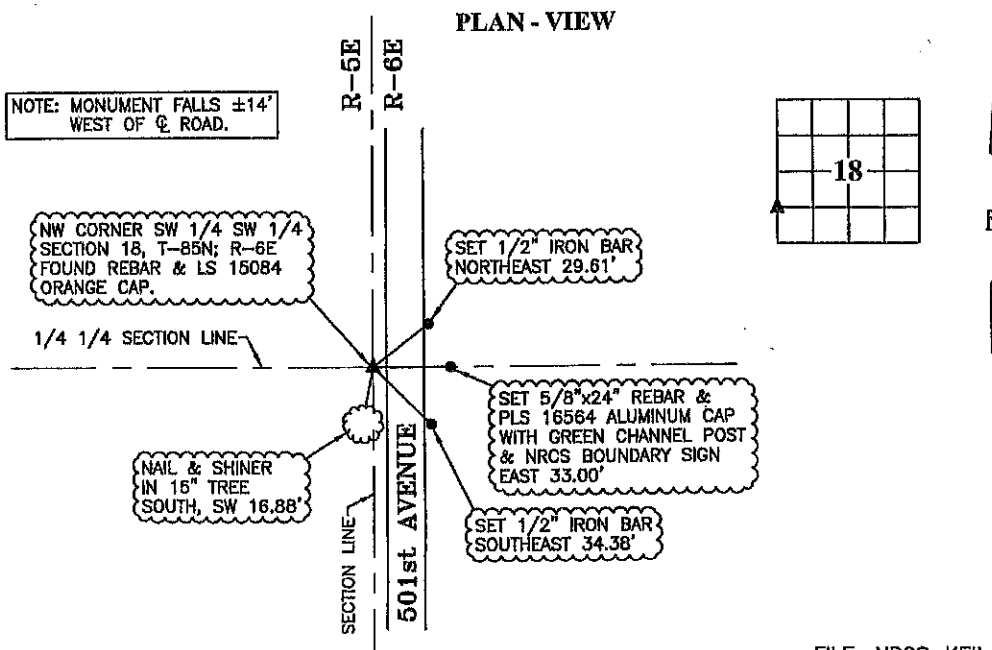
OF

Land Survey Monuments situated in Section 18, Township T-85N, Range R-6E, of the Fifth Principal Meridian, Jackson County, Iowa.

NO DOCUMENT PREVIOUSLY FILED FOR THE MONUMENT RECOVERED. I ACCEPTED THE MONUMENT AFTER ACQUIRING DOCUMENTS FROM USACE SURVEYS SUBDIVIDING THE SECTION IN FROM 1938-1943. I FOUND THE POSITION OF THIS CORNER TO BE CONSISTENT WITH THE USACE SURVEYS.

Monument Description and Remarks:

NW CORNER SW 1/4 SW 1/4 SEC. 18, T-85N; R-6E - FOUND REBAR & LS 15084 ORANGE CAP.



FILE: NRCS_KEIL_C

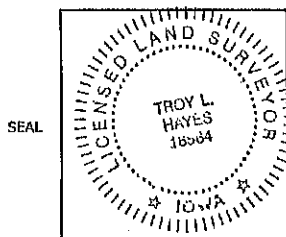
I HEREBY CERTIFY THAT THIS LAND SURVEYING DOCUMENT WAS PREPARED AND THE RELATED SURVEY WORK WAS PERFORMED BY ME OR UNDER MY DIRECT PERSONAL SUPERVISION AND THAT I AM A DULY LICENSED PROFESSIONAL LAND SURVEYOR UNDER THE LAWS OF THE STATE OF IOWA.

Troy L. Hayes 12/7/21
TROY L. HAYES, P.L.S. (DATE)

LICENSE NUMBER PLS 16564

MY LICENSE RENEWAL DATE IS DECEMBER 31, 2022

PAGES OR SHEETS COVERED BY THIS SEAL: 1 OF 1



CORNER TO BE INDEXED

Corner coordinates in Iowa State Plane South, NAD1983 (HARN96), U.S. Survey Feet.

NW CORNER
Corner: SW 1/4 SW 1/4 Section: 18
Twp: T-85N Rng: R-6E



**MIDLAND
SURVEYING**

LAND SURVEYORS - PLANNERS
501 North Market, Maryville, MO 64468
ph. (660) 582-8633 fax (660) 582-7173
4784 Frederick Blvd, St. Joseph, MO 64506
ph. (816) 233-7900 fax (816) 233-4852



Document 21-4485

Type 15 001 Pages 1
Date 10/26/2021 Time 10:17 AM
Rec Amt \$7.00

ARLENE SCHAUF, RECORDER/REGISTRAR
JACKSON COUNTY IOWA

PREPARED BY/RETURN TO: MIDLAND SURVEYING, INC. 501 N. MARKET ST. MARYVILLE, MO 64468 (660) 582-8633

UNITED STATES PUBLIC LAND SURVEY CORNER CERTIFICATE

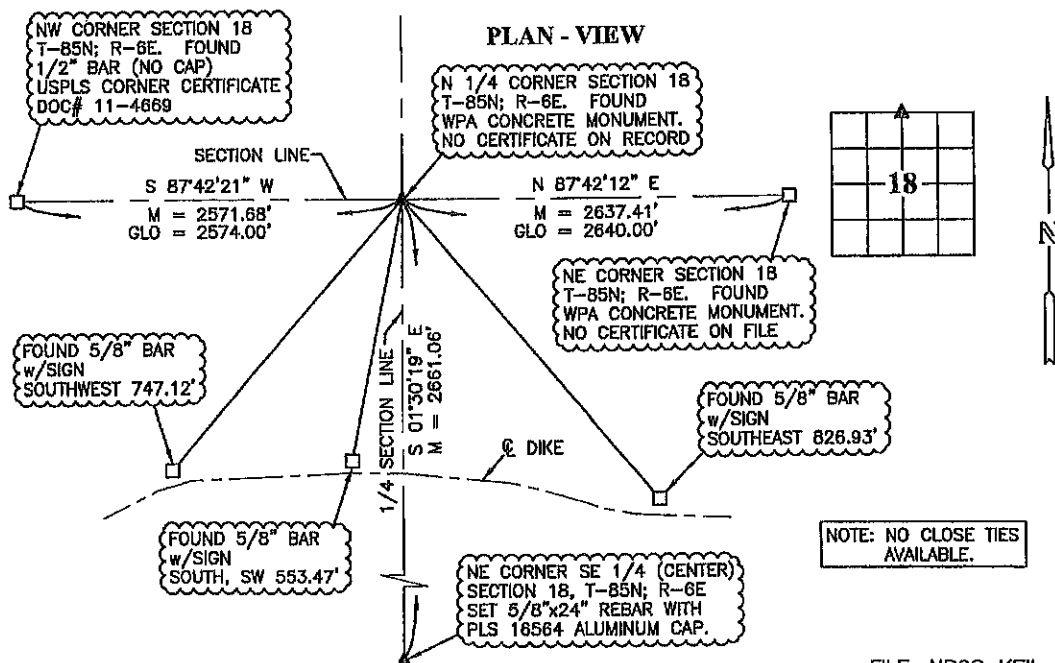
OF

Land Survey Monuments situated in Section 18, Township T-85N, Range R-6E, of the Fifth Principal Meridian, Jackson County, Iowa.

FOUND 4" SQUARE WPA CONCRETE MONUMENT AT POSITION NOTED ON USACE SURVEYS WITHIN SECTION 18. NO PRIOR CERTIFICATE OF RECORD.

Monument Description and Remarks:

N 1/4 CORNER SECTION 18, T-85N; R-6E - FOUND WPA CONCRETE MONUMENT.



FILE: NRCS_KEIL_C

I HEREBY CERTIFY THAT THIS LAND SURVEYING DOCUMENT WAS PREPARED AND THE RELATED SURVEY WORK WAS PERFORMED BY ME OR UNDER MY DIRECT PERSONAL SUPERVISION AND THAT I AM A DULY LICENSED PROFESSIONAL LAND SURVEYOR UNDER THE LAWS OF THE STATE OF IOWA.

TROY L. HAYES, L.L.S. (DATE) 10/6/21

LICENSE NUMBER PLS 16564

MY LICENSE RENEWAL DATE IS DECEMBER 31, 2022

PAGES OR SHEETS COVERED BY THIS SEAL: 1 OF 1

CORNER TO BE INDEXED

Corner coordinates in Iowa State Plane South, NAD1983 (HARN96), U.S. Survey Feet.

Corner: N 1/4 Section: 18

Twp: T-85N Rng: R-6E

SEAL



LAND SURVEYORS - PLANNERS
501 North Market, Maryville, MO 64468
ph. (660) 582-8633 fax (660) 582-7173
4764 Frederick Blvd, St. Joseph, MO 64506
ph. (816) 233-7900 fax (816) 233-4832



Document 21-4484

Type 15 001 Pages 1
Date 10/26/2021 Time 10:17 AM
Rec Amt \$7.00

ARLENE SCHAUF, RECORDER/REGISTRAR
JACKSON COUNTY IOWA

PREPARED BY/RETURN TO: MIDLAND SURVEYING, INC. 501 N. MARKET ST. MARYVILLE, MO 64468 (660) 582-8533

UNITED STATES PUBLIC LAND SURVEY CORNER CERTIFICATE

OF

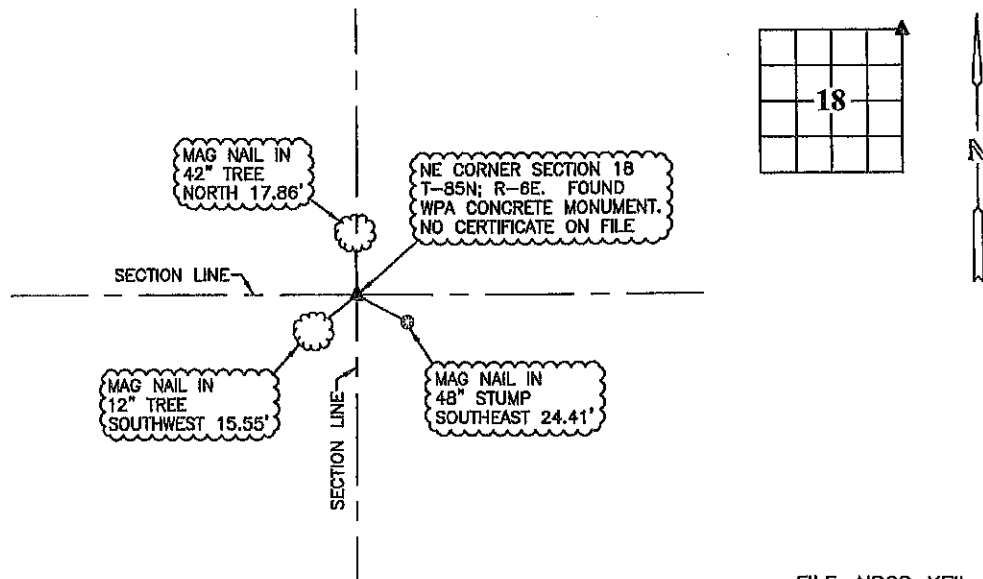
Land Survey Monuments situated in Section 18, Township T-85N, Range R-6E, of the Fifth Principal Meridian, Jackson County, Iowa.

FOUND 4" SQUARE WPA CONCRETE MONUMENT. NO PRIOR CERTIFICATE OF RECORD.

Monument Description and Remarks:

NE CORNER SECTION 18, T-85N; R-6E - WPA CONCRETE MONUMENT.

PLAN - VIEW



FILE: NRCS_KEIL_C

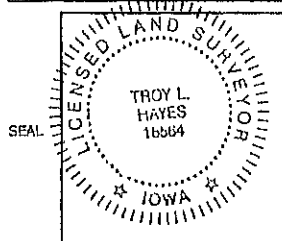
I HEREBY CERTIFY THAT THIS LAND SURVEYING DOCUMENT WAS PREPARED AND THE RELATED SURVEY WORK WAS PERFORMED BY ME OR UNDER MY DIRECT PERSONAL SUPERVISION AND THAT I AM A DULY LICENSED PROFESSIONAL LAND SURVEYOR UNDER THE LAWS OF THE STATE OF IOWA.

Troy L. Hayes 10/6/21
TROY L. HAYES, P.L.S. (DATE)

LICENSE NUMBER PLS 16564

MY LICENSE RENEWAL DATE IS DECEMBER 31, 2022

PAGES OR SHEETS COVERED BY THIS SEAL: 1 OF 1



CORNER TO BE INDEXED

Corner coordinates in Iowa State Plane South,
NAD1983 (HARN96), U.S. Survey Feet.

Corner: NE Section: 18

Twp: T-85N Rng: R-6E



**MIDLAND
SURVEYING**

LAND SURVEYORS - PLANNERS
501 North Market, Maryville, MO 64468
ph. (660) 582-8533 fax (660) 582-7173
4784 Frederick Blvd, St. Joseph, MO 64506
ph. (816) 233-7960 fax (816) 233-4832



Document 21-4483

Type 15 001 Pages 1
Date 10/26/2021 Time 10:17 AM
Rec Amt \$7.00

ARLENE SCHAUF, RECORDER/REGISTRAR
JACKSON COUNTY IOWA

PREPARED BY/RETURN TO: MIDLAND SURVEYING, INC. 501 N. MARKET ST. MARYVILLE, MO 64468 (560) 582-8633

UNITED STATES PUBLIC LAND SURVEY CORNER CERTIFICATE

OF

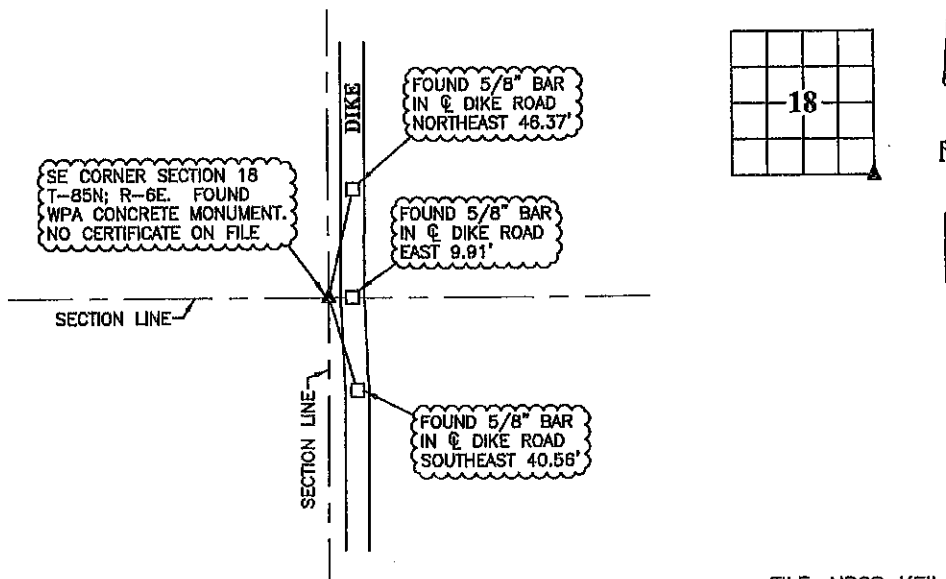
Land Survey Monuments situated in Section 18, Township T-85N, Range R-6E, of the Fifth Principal Meridian, Jackson County, Iowa.

FOUND 4" SQUARE CONCRETE MONUMENT AT POSITION NOTED IN USACE PLAT No. 12-FLa-548, TRACT No. 347 DATED OCTOBER 8, 1943. NO PRIOR CERTIFICATE IN PUBLIC RECORDS.

Monument Description and Remarks:

SE CORNER SECTION 18, T-85N; R-6E - FOUND WPA CONCRETE MONUMENT.

PLAN - VIEW



FILE: NRCS_KEIL_C

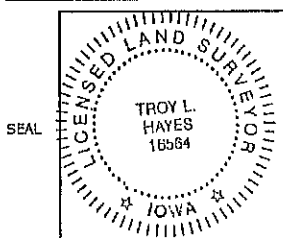
I HEREBY CERTIFY THAT THIS LAND SURVEYING DOCUMENT WAS PREPARED AND THE RELATED SURVEY WORK WAS PERFORMED BY ME OR UNDER MY DIRECT PERSONAL SUPERVISION AND THAT I AM A DULY LICENSED PROFESSIONAL LAND SURVEYOR UNDER THE LAWS OF THE STATE OF IOWA.

Troy L. Hayes 10/6/21
TROY L. HAYES, P.L.S. (DATE)

LICENSE NUMBER PLS 16564

MY LICENSE RENEWAL DATE IS DECEMBER 31, 2022

PAGES OR SHEETS COVERED BY THIS SEAL: 1 OF 1



CORNER TO BE INDEXED

Corner coordinates in Iowa State Plane South, NAD1983 (HARN96), U.S. Survey Feet.

Corner: SE Section: 18

Twps: T-85N Rng: R-6E



MIDLAND
SURVEYING

LAND SURVEYORS - PLANNERS
501 North Market, Maryville, MO 64468
ph. (660) 582-8633 fax (660) 582-1173
4784 Frederick Blvd, St. Joseph, MO 64506
ph. (816) 233-7900 fax (816) 233-4852



Document 21-4482

Type 15 001 Pages 1
Date 10/26/2021 Time 10:17 AM
Rec Amt \$7.00

ARLENE SCHAUF, RECORDER/REGISTRAR
JACKSON COUNTY IOWA

PREPARED BY/RETURN TO: MIDLAND SURVEYING, INC. 501 N. MARKET ST. MARYVILLE, MO 64468 (660) 582-8633

UNITED STATES PUBLIC LAND SURVEY CORNER CERTIFICATE

OF

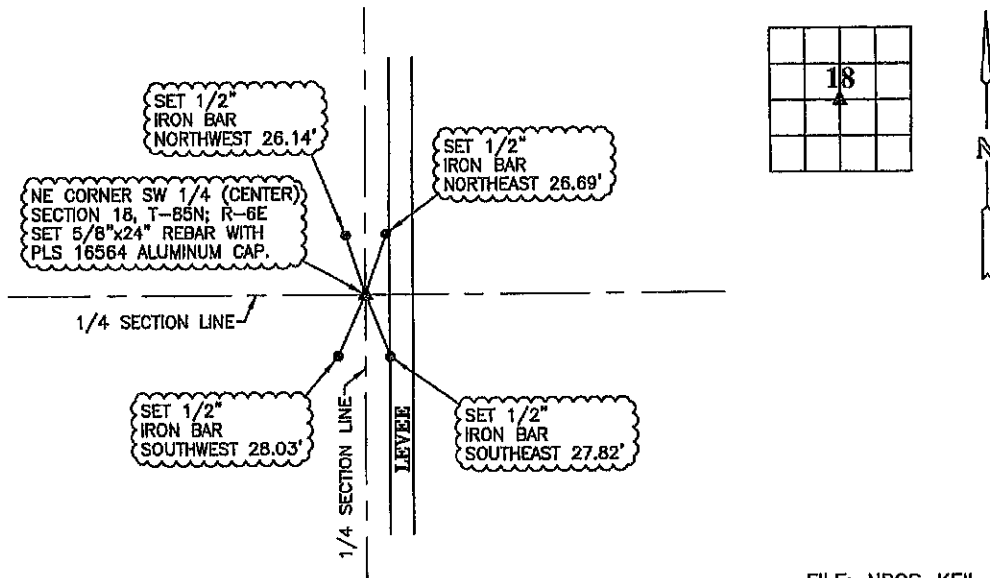
Land Survey Monuments situated in Section 18, Township T-85N, Range R-6E, of the Fifth Principal Meridian, Jackson County, Iowa.

RESTORED POSITION OF CORNER FROM USACE PLAT No. 13-FLa-552 OF TRACT No. FLA-351
DATED OCTOBER 8, 1943.

Monument Description and Remarks:

NE CORNER SW 1/4 SECTION 18, T-85N; R-6E - SET 5/8"x24" REBAR WITH PLS 16564 ALUMINUM CAP.

PLAN - VIEW



FILE: NRCS_KEIL_C

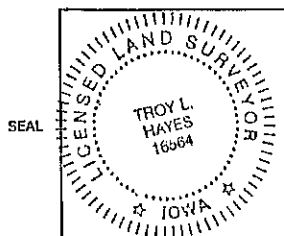
I HEREBY CERTIFY THAT THIS LAND SURVEYING DOCUMENT WAS PREPARED AND THE RELATED SURVEY WORK WAS PERFORMED BY ME OR UNDER MY DIRECT PERSONAL SUPERVISION AND THAT I AM A DULY LICENSED PROFESSIONAL LAND SURVEYOR UNDER THE LAWS OF THE STATE OF IOWA.

TROY L. HAYES, P.L.S. 10/6/21 (DATE)

LICENSE NUMBER PLS 16564

MY LICENSE RENEWAL DATE IS DECEMBER 31, 2022

PAGES OR SHEETS COVERED BY THIS SEAL: 1 OF 1



CORNER TO BE INDEXED

Corner coordinates in Iowa State Plane South,
NAD1983 (HARN96), U.S. Survey Feet.

Corner: NE CORNER SW 1/4 Section: 18

Twp: T-85N Rng: R-6E



MIDLAND
SURVEYING

LAND SURVEYORS - PLANNERS

501 North Market, Maryville, MO 64468
ph. (660) 582-8633 fax (660) 582-7173

4784 Frederick Blvd, St. Joseph, MO 64506
ph. (816) 233-7900 fax (816) 233-4852



Document 21-4481

Type 15 001 Pages 1
Date 10/26/2021 Time 10:17 AM
Rec Amt \$7.00

ARLENE SCHAUF, RECORDER/REGISTRAR
JACKSON COUNTY IOWA

PREPARED BY/RETURN TO: MIDLAND SURVEYING, INC. 501 N. MARKET ST. MARYVILLE, MO 64468 (660) 582-8633

UNITED STATES PUBLIC LAND SURVEY CORNER CERTIFICATE

OF

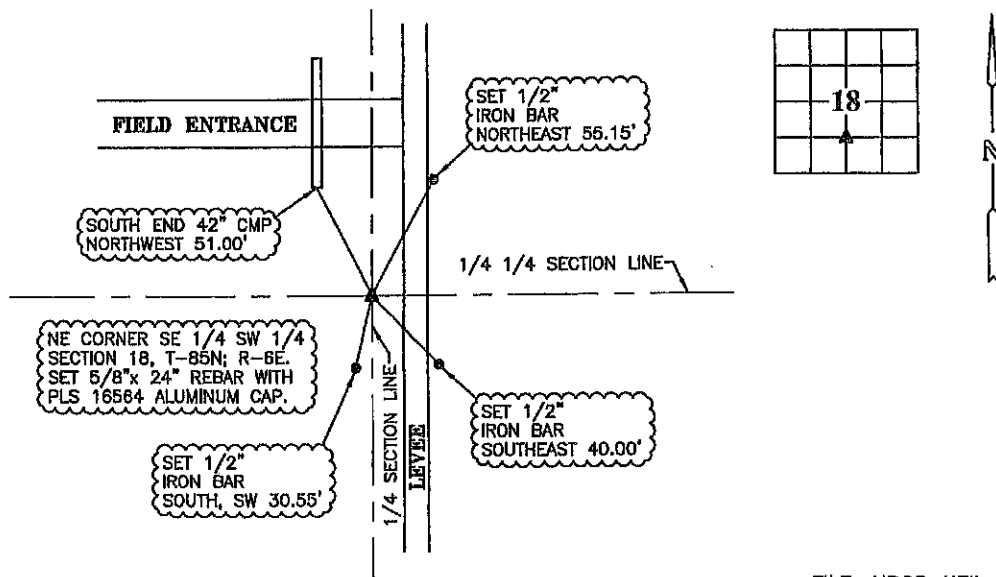
Land Survey Monuments situated in Section 18, Township T-85N, Range R-6E, of the Fifth Principal Meridian, Jackson County, Iowa.

RESTORED CORNER POSITION FROM USACE PLAT No. 12-FLa-551 OF TRACT No. FLa-350
DATED OCTOBER 8, 1943.

Monument Description and Remarks:

NE CORNER SE 1/4 SW 1/4 SEC. 18, T-85N; R-6E - SET 5/8"x24" REBAR WITH PLS 16564 ALUMINUM CAP.

PLAN - VIEW



FILE: NRCS_KEIL_C

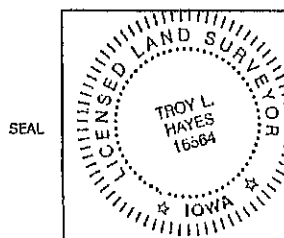
I HEREBY CERTIFY THAT THIS LAND SURVEYING DOCUMENT WAS PREPARED AND THE RELATED SURVEY WORK WAS PERFORMED BY ME OR UNDER MY DIRECT PERSONAL SUPERVISION AND THAT I AM A DULY LICENSED PROFESSIONAL LAND SURVEYOR UNDER THE LAWS OF THE STATE OF IOWA.

Troy L. Hayes 10/6/21
TROY L. HAYES, P.L.S. (DATE)

LICENSE NUMBER PLS 16564

MY LICENSE RENEWAL DATE IS DECEMBER 31, 2022

PAGES OR SHEETS COVERED BY THIS SEAL: 1 OF 1



CORNER TO BE INDEXED

Corner coordinates in Iowa State Plane South,
NAD1983 (HARN96), U.S. Survey Feet.

NE CORNER
Corner: SE 1/4 SW 1/4 Section: 18
Twp: T-85N Rng: R-6E



MIDLAND
SURVEYING

LAND SURVEYORS - PLANNERS
501 North Market, Maryville, MO 64468
ph. (660) 582-8633 fax (660) 582-7173
4784 Frederick Blvd, St. Joseph, MO 64506
ph. (816) 233-7900 fax (816) 233-4832



Document 21-4480

Type 15 001 Pages 1
Date 10/26/2021 Time 10:17 AM
Rec Amt \$7.00

ARLENE SCHAUF, RECORDER/REGISTRAR
JACKSON COUNTY IOWA

PREPARED BY/RETURN TO: MIDLAND SURVEYING, INC. 501 N. MARKET ST. MARYVILLE, MO 64468 (660) 582-8533

UNITED STATES PUBLIC LAND SURVEY CORNER CERTIFICATE

OF

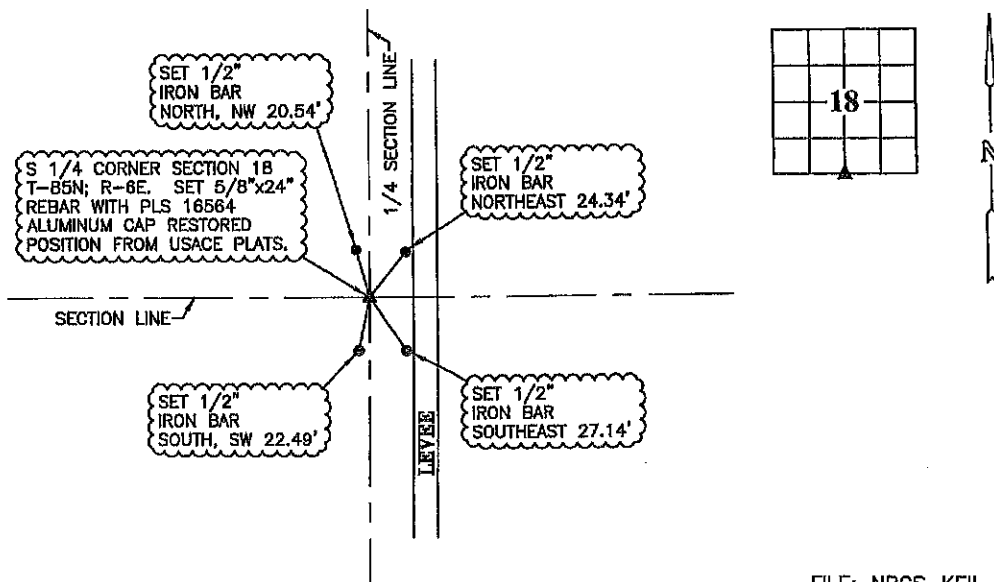
Land Survey Monuments situated in Section 18, Township T-85N, Range R-6E, of the Fifth Principal Meridian, Jackson County, Iowa.

RESTORED CORNER POSITION FROM USACE PLAT Nos. 12-FLa-551 & 13-FLa-552 OF TRACTS No. FLA-350 & FLA-351 DATED OCTOBER 8, 1943.

Monument Description and Remarks:

S 1/4 CORNER SECTION 18, T-85N; R-6E - SET 5/8"x24" REBAR WITH PLS 16564 ALUMINUM CAP.

PLAN - VIEW



FILE: NRCS_KEIL_C

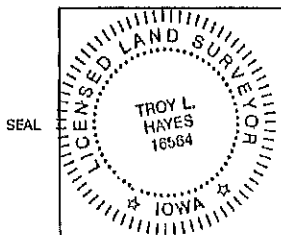
I HEREBY CERTIFY THAT THIS LAND SURVEYING DOCUMENT WAS PREPARED AND THE RELATED SURVEY WORK WAS PERFORMED BY ME OR UNDER MY DIRECT PERSONAL SUPERVISION AND THAT I AM A DULY LICENSED PROFESSIONAL LAND SURVEYOR UNDER THE LAWS OF THE STATE OF IOWA.

Troy L. Hayes 10/6/21
TROY L. HAYES, P.L.S. (DATE)

LICENSE NUMBER PLS 16564

MY LICENSE RENEWAL DATE IS DECEMBER 31, 2022

PAGES OR SHEETS COVERED BY THIS SEAL: 1 OF 1



CORNER TO BE INDEXED

Corner coordinates in Iowa State Plane South,
NAD1983 (HARN96), U.S. Survey Feet.

Corner: S 1/4 Section: 18

Twtp: T-85N Rng: R-6E



MIDLAND
SURVEYING

LAND SURVEYORS - PLANNERS

501 North Market, Maryville, MO 64468
ph. (660) 582-8533 fax (660) 582-7173
4784 Frederick Blvd. St. Joseph, MO 64506
ph. (816) 233-7900 fax (816) 233-4852



Document 21-4479

Type 15 001 Pages 1
Date 10/26/2021 Time 10:17 AM
Rec Amt \$7.00

ARLENE SCHAUF, RECORDER/REGISTRAR
JACKSON COUNTY IOWA

PREPARED BY/RETURN TO: MIDLAND SURVEYING, INC. 501 N. MARKET ST. MARYVILLE, MO 64468 (660) 582-8633

UNITED STATES PUBLIC LAND SURVEY CORNER CERTIFICATE

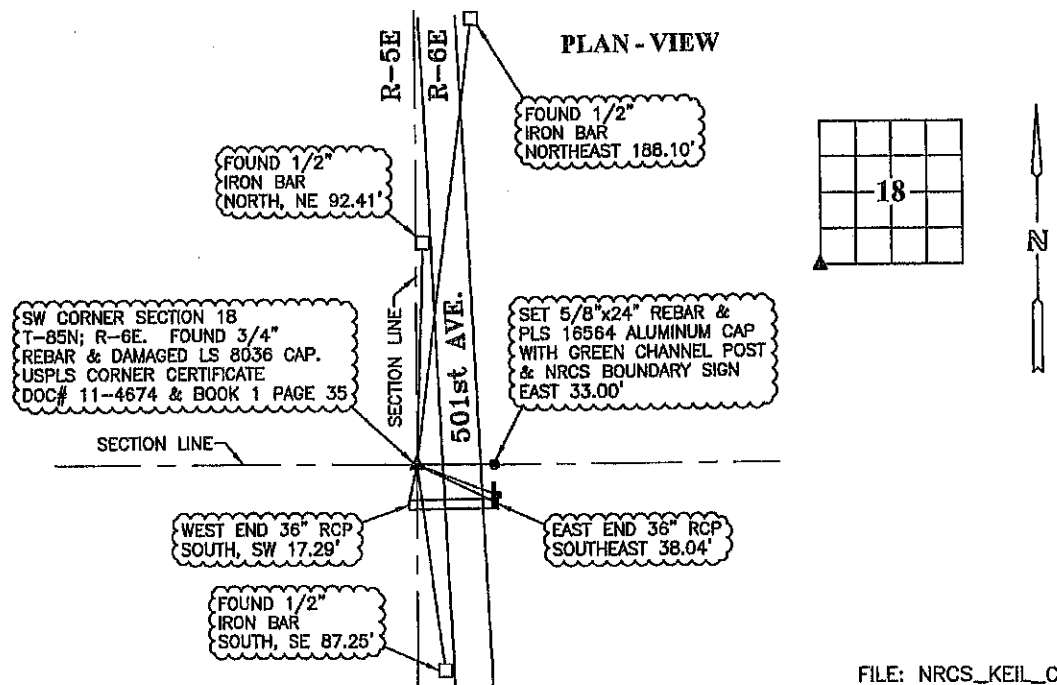
OF

Land Survey Monuments situated in Section 18, Township T-85N, Range R-6E, of the Fifth Principal Meridian, Jackson County, Iowa.

FOUND MONUMENT AS DESCRIBED IN PRIOR CORNER CERTIFICATES. FILED NEW CERTIFICATE TO UPDATE REFERENCE TIES.

Monument Description and Remarks:

SW CORNER SECTION 18, T-85N; R-6E - FOUND 3/4" REBAR & CAP.



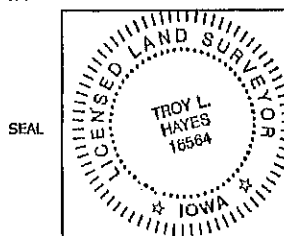
I HEREBY CERTIFY THAT THIS LAND SURVEYING DOCUMENT WAS PREPARED AND THE RELATED SURVEY WORK WAS PERFORMED BY ME OR UNDER MY DIRECT PERSONAL SUPERVISION AND THAT I AM A DULY LICENSED PROFESSIONAL LAND SURVEYOR UNDER THE LAWS OF THE STATE OF IOWA.

Troy L. Hayes 10/6/21
TROY L. HAYES, P.L.S. (DATE)

LICENSE NUMBER PLS 16564

MY LICENSE RENEWAL DATE IS DECEMBER 31, 2022

PAGES OR SHEETS COVERED BY THIS SEAL: 1 OF 1



CORNER TO BE INDEXED

Corner coordinates in Iowa State Plane South, NAD1983 (HARN96), U.S. Survey Feet.

Corner: SW Section: 18

Twp: T-85N Rng: R-6E



**MIDLAND
SURVEYING**

LAND SURVEYORS - PLANNERS
501 North Market, Maryville, MO 64468
ph. (660) 582-8633 fax (660) 582-7173
4784 Frederick Blvd, St. Joseph, MO 64506
ph. (816) 233-9900 fax (816) 233-4852



Document 21-4477

Type 15 001 Pages 1
Date 10/26/2021 Time 10:17 AM
Rec Amt \$7.00

ARLENE SCHAUF, RECORDER/REGISTRAR
JACKSON COUNTY IOWA

PREPARED BY/RETURN TO: MIDLAND SURVEYING, INC. 501 N. MARKET ST. MARYVILLE, MO 64468 (660) 582-8633

UNITED STATES PUBLIC LAND SURVEY CORNER CERTIFICATE

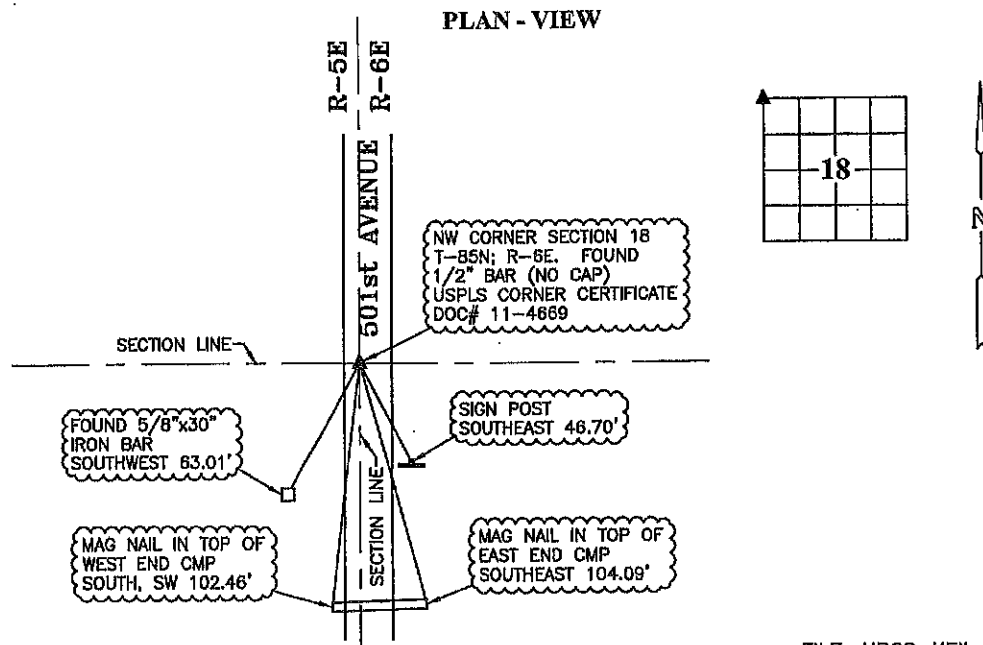
OF

Land Survey Monuments situated in Section 18, Township T-85N, Range R-6E, of the Fifth Principal Meridian, Jackson County, Iowa.

FOUND MONUMENT MATCHING POSITION NOTED IN PRIOR CERTIFICATE. FILED NEW CERTIFICATE TO UPDATE REFERENCE TIES.

Monument Description and Remarks:

NW CORNER SECTION 18, T-85N; R-6E - FOUND 1/2" BAR (NO CAP).



FILE: NRCS_KEIL_C

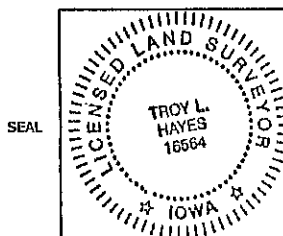
I HEREBY CERTIFY THAT THIS LAND SURVEYING DOCUMENT WAS PREPARED AND THE RELATED SURVEY WORK WAS PERFORMED BY ME OR UNDER MY DIRECT PERSONAL SUPERVISION AND THAT I AM A DULY LICENSED PROFESSIONAL LAND SURVEYOR UNDER THE LAWS OF THE STATE OF IOWA.

Troy L. Hayes 10/6/21
TROY L. HAYES, P.L.S. (DATE)

LICENSE NUMBER PLS 16564

MY LICENSE RENEWAL DATE IS DECEMBER 31, 2022

PAGES OR SHEETS COVERED BY THIS SEAL: 1 OF 1



CORNER TO BE INDEXED

Corner coordinates in Iowa State Plane South,
NAD1983 (HARN96), U.S. Survey Feet.

Corner: NW Section: 18

Twp: T-85N Rng: R-6E



**MIDLAND
SURVEYING**

LAND SURVEYORS - PLANNERS

501 North Market, Maryville, MO 64468

ph. (660) 582-8633 fax (660) 582-7173

4784 Frederick Blvd, St. Joseph, MO 64506

ph. (816) 233-7900 fax (816) 233-4832



Document 21-4478

Type 15 001 Pages 1
Date 10/26/2021 Time 10:17 AM
Reo Amt \$7.00

ARLENE SCHAUF, RECORDER/REGISTRAR
JACKSON COUNTY IOWA

PREPARED BY/RETURN TO: MIDLAND SURVEYING, INC. 501 N. MARKET ST. MARYVILLE, MO 64468 (560) 582-8633

UNITED STATES PUBLIC LAND SURVEY CORNER CERTIFICATE

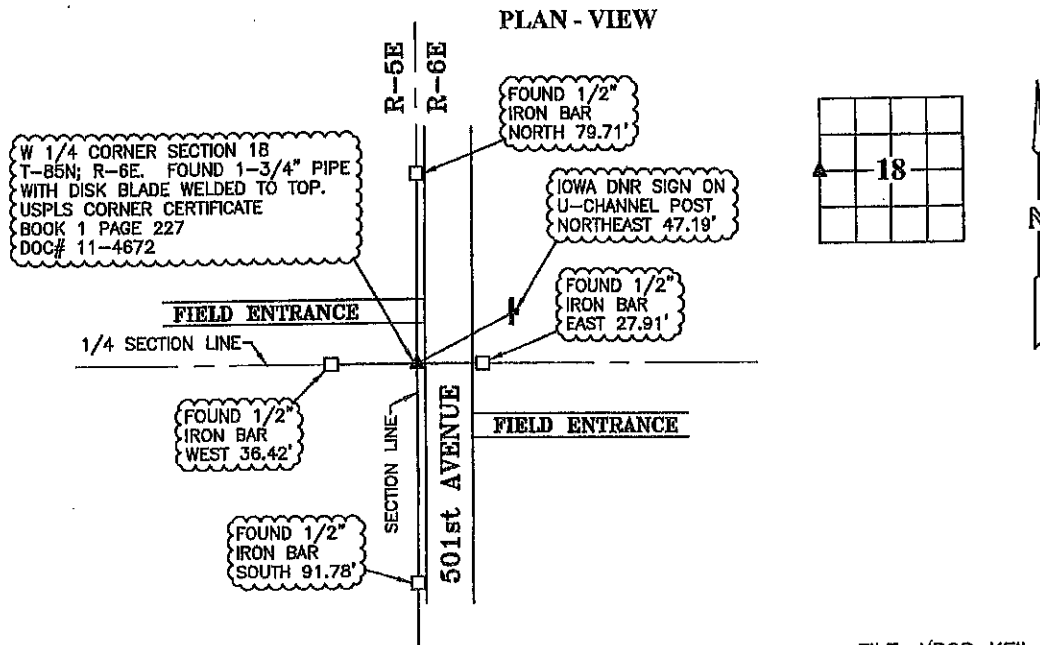
OF

Land Survey Monuments situated in Section 18, Township T-85N, Range R-6E, of the Fifth Principal Meridian, Jackson County, Iowa.

FOUND MONUMENT DESCRIBED BELOW MATCHING POSITION DESCRIBED IN PRIOR CERTIFICATE.
FILED NEW CERTIFICATE TO REPORT CHANGE IN MONUMENT DESCRIPTION AND TO UPDATE
REFERENCE TIES.

Monument Description and Remarks:

W 1/4 CORNER SECTION 18, T-85N; R-6E - FOUND 1-3/4" PIPE WITH DISK BLADE WELDED TO TOP.



FILE: NRCS_KEIL_C

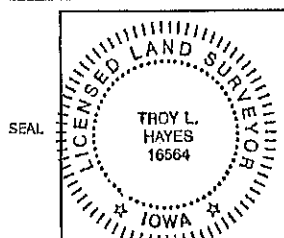
I HEREBY CERTIFY THAT THIS LAND SURVEYING DOCUMENT WAS PREPARED AND THE RELATED SURVEY WORK WAS PERFORMED BY ME OR UNDER MY DIRECT PERSONAL SUPERVISION AND THAT I AM A DULY LICENSED PROFESSIONAL LAND SURVEYOR UNDER THE LAWS OF THE STATE OF IOWA.

Troy L. Hayes 10/6/21
TROY L. HAYES, P.L.S. (DATE)

LICENSE NUMBER PLS 16564

MY LICENSE RENEWAL DATE IS DECEMBER 31, 2022

PAGES OR SHEETS COVERED BY THIS SEAL: 1 OF 1



CORNER TO BE INDEXED

Corner coordinates in Iowa State Plane South,
NAD1983 (HARN96), U.S. Survey Feet.

Corner: W 1/4 Section: 18

Twp: T-85N Rng: R-6E



**MIDLAND
SURVEYING**

LAND SURVEYORS - PLANNERS

501 North Market, Maryville, MO 64468

ph. (560) 582-8633 fax (560) 582-7173

4784 Frederick Blvd., St. Joseph, MO 64506

ph. (816) 233-7900 fax (816) 233-4852