

UNITED STATES PUBLIC LAND SURVEY CORNER CERTIFICATE

OF

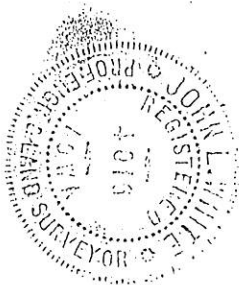
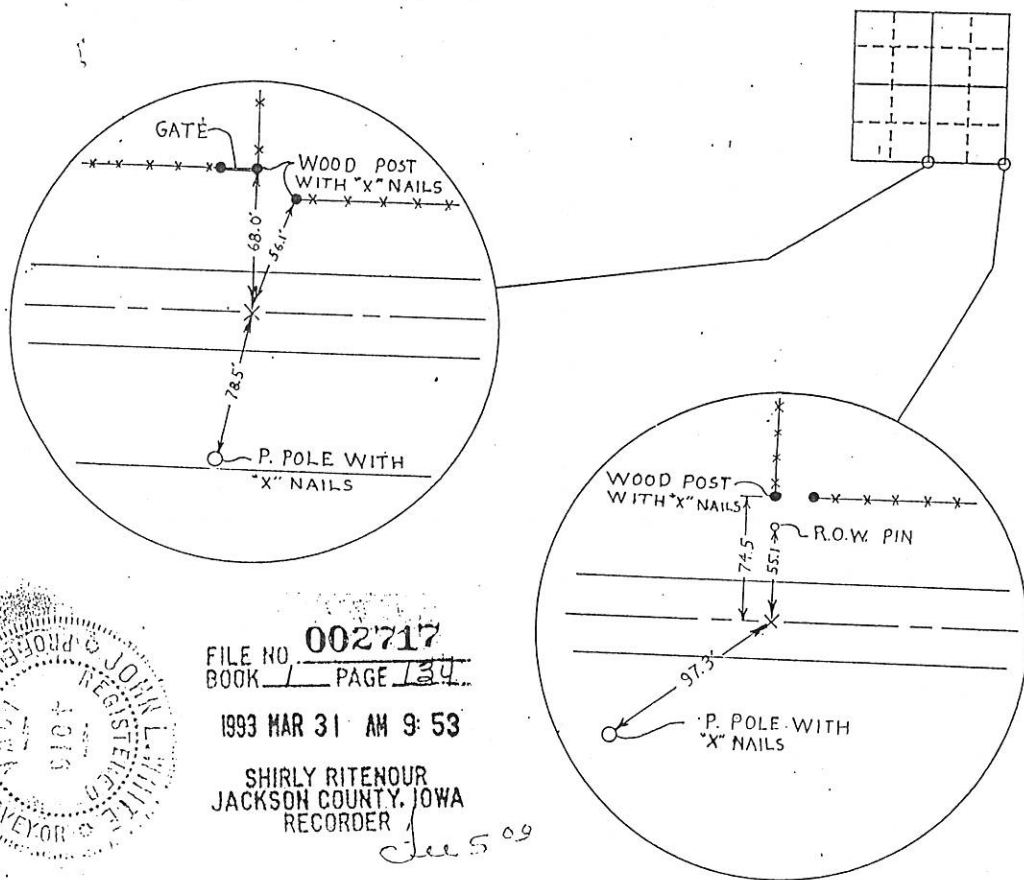
Land Survey Monuments situated in Section 17, Township 85N, Range 5E, of the Fifth Principal Meridian, JACKSON County, Iowa.
 Previously recorded in Book _____, Page _____.

(Show reason for preparing this certificate, the evidence and detailed procedures used in establishing the corner positions and monumentation found or placed.)

Monument Description and Remarks: SECTION CORNERS ARE "X" CUT IN PAVEMENT
NO EXISTING SECTION CORNERS COULD BE FOUND.
THESE CORNERS WERE ESTABLISHED FROM & TIED
TO EXISTING CORNERS OF RECORD IN SECTION 29.

PLAN - VIEW

(Show a minimum of three reference ties to durable physical objects, relevant monuments and physical conditions that will enable recovery of the corner.)



FILE NO. 002717
 BOOK 1 PAGE 134

1993 MAR 31 AM 9:53

SHIRLY RITENOUR
 JACKSON COUNTY, IOWA
 RECORDER

See 509

I hereby certify that the survey work was completed and this certificate was prepared by me or under my direct personal supervision and that I am a duly registered land surveyor under the laws of the state of Iowa.

John L. White 24 Feb 1993

REGISTERED LAND SURVEYOR NO. 4013

REG. RENEWAL 12/31/94

SEAL



List Corners to be Indexed

Corners	Section	Twp	Range
SE	17	85N	5E
S 1/4	17	85N	5E

UNITED STATES PUBLIC LAND SURVEY CORNER CERTIFICATE

OF

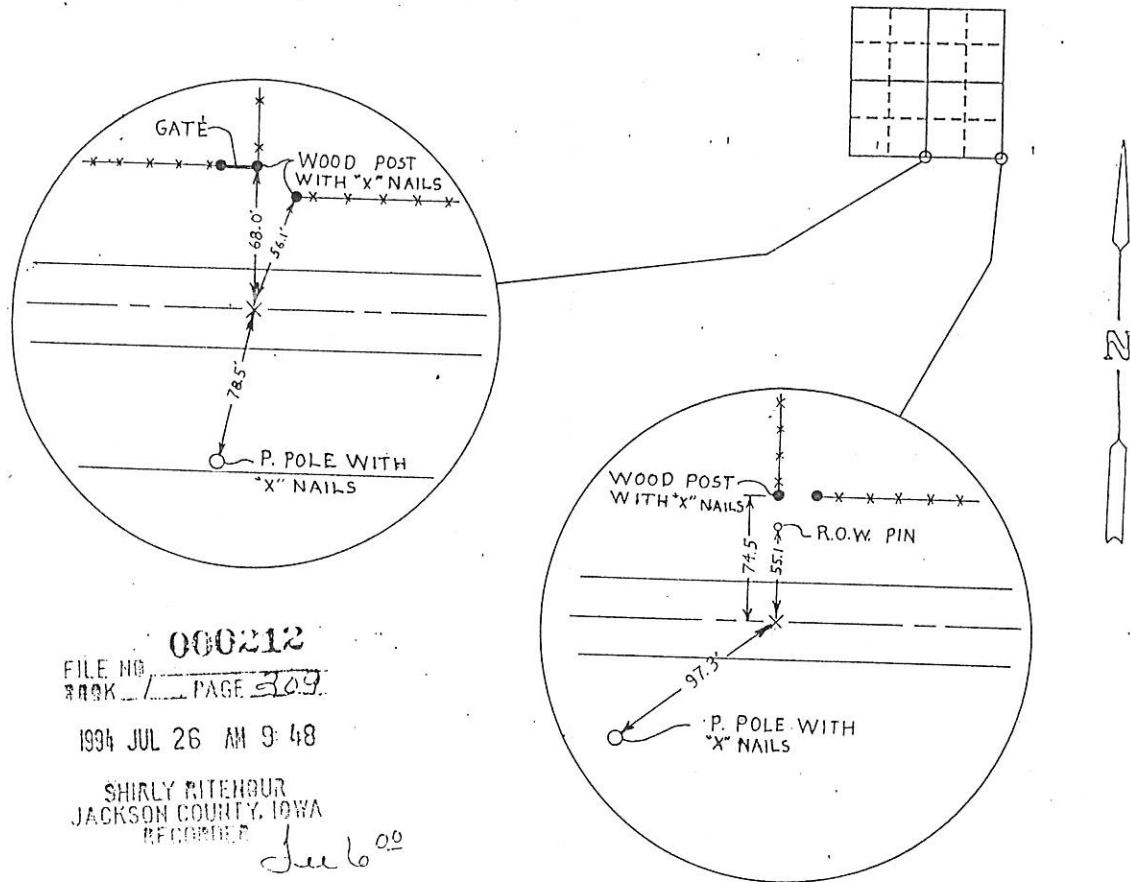
Land Survey Monuments situated in Section 17, Township 85N, Range 5E, of the Fifth Principal Meridian, JACKSON County, Iowa.
 Previously recorded in Book _____, Page _____.

(Show reason for preparing this certificate, the evidence and detailed procedures used in establishing the corner positions and monumentation found or placed.)

Monument Description and Remarks: SECTION CORNERS ARE "X" CUT IN PAVEMENT
NO EXISTING SECTION CORNERS COULD BE FOUND.
THESE CORNERS WERE ESTABLISHED FROM & TIED
TO EXISTING CORNERS OF RECORD IN SECTION 29.

PLAN - VIEW

(Show a minimum of three reference ties to durable physical objects, relevant monuments and physical conditions that will enable recovery of the corner.)



FILE NO. 000212
 BOOK 1 PAGE 209

1994 JUL 26 AM 9:48

SHIRLEY RITENOUR
 JACKSON COUNTY, IOWA
 RECORDED

See 6 00

I hereby certify that the survey work was completed and this certificate was prepared by me or under my direct personal supervision and that I am a duly registered land surveyor under the laws of the state of Iowa.

John L. White

REGISTERED LAND SURVEYOR NO. 4016

REG. RENEWAL 12/31/94

SEAL



List Corners to be Indexed

Corners	Section	Twp	Range
SE	17	85N	5E
S/4	17	85N	5E