

## UNITED STATES PUBLIC LAND SURVEY CORNER CERTIFICATE

OF

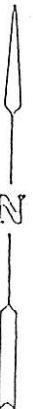
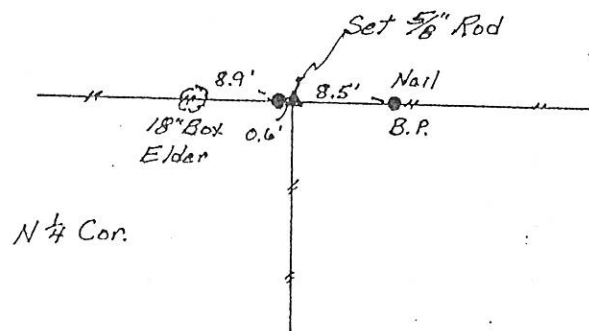
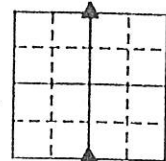
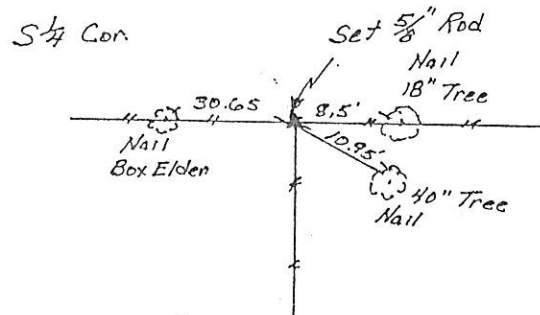
Land Survey Monuments situated in Section 9, Township 84N, Range 5E, of the Fifth Principal Meridian, Jackson County, Iowa.  
 Previously recorded in none in County Recorder's Office.  
 (book, page, document number, etc.)

(Show reason for preparing this certificate, the evidence and detailed procedures used in establishing the corner positions and monumentation found or placed.)

Monument Description and Remarks: We found no evidence of existing section corners.  
We did find and use established fencelines to set both of these corners

## PLAN - VIEW

(Show a minimum of three reference ties to durable physical objects, relevant monuments and physical conditions that will enable recovery of the corner.)



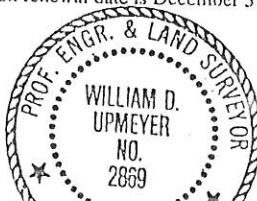
I hereby certify that the survey work was completed and this land surveying document was prepared by me or under my direct personal supervision and that I am a duly registered land surveyor under the laws of the state of Iowa

Signature: William D. Upmeyer  
 Name typed or printed: William D. Upmeyer

Date: 6-26-96 Reg. No. 2869

My registration renewal date is December 31, 1997

SEAL



Corners	List Corners to be Indexed Section	Twp	Range
S 1/4	9	84N	5E
N 1/4	9	84N	5E

FILE NO. 203812  
 BOOK 1 PAGE 283

1996 JUL -3 PM 2:52

SHIRLY RITENOUR  
 JACKSON COUNTY, IOWA  
 RECORDER

*du 6 00*

## UNITED STATES PUBLIC LAND SURVEY CORNER CERTIFICATE

OF

Land Survey Monuments situated in Section 9, Township 84N, Range 5E, of the Fifth Principal Meridian, \_\_\_\_\_ County, Iowa.  
Previously recorded in \_\_\_\_\_ in County Recorder's Office.

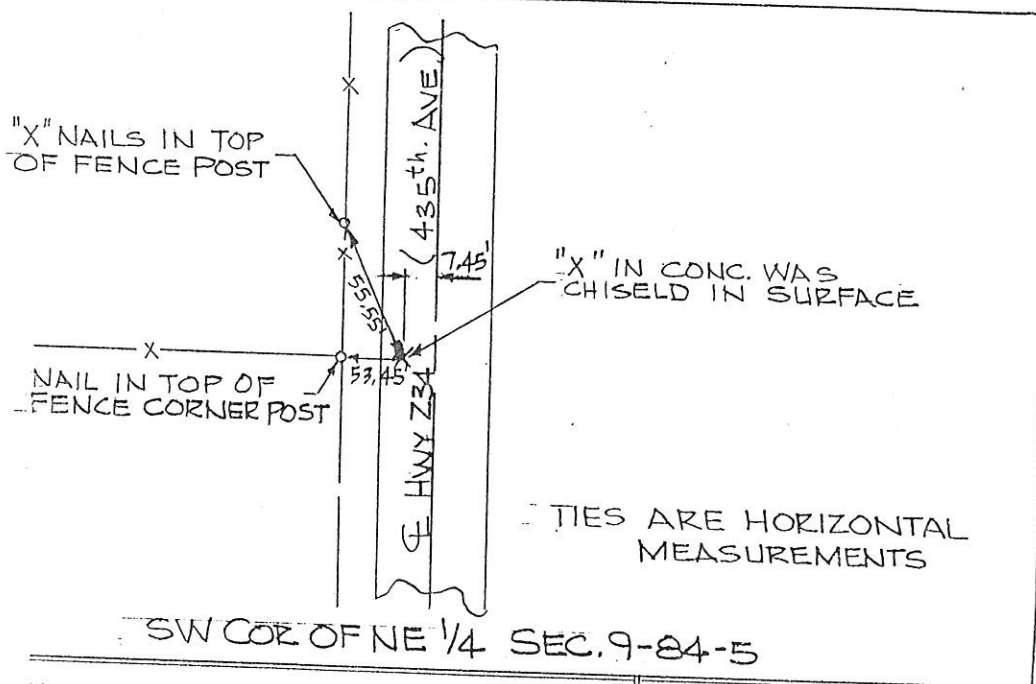
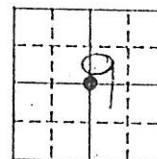
(book, page, document number, etc.)

(Show reason for preparing this certificate, the evidence and detailed procedures used in establishing the corner positions and monumentation found or placed.)

Monument Description and Remarks: The "X" was chiseled in the Hwy. at this point because no recorded evidence was found for this point. The corner was reestablished using a straight line from the N. 1/4 cor. to the S. 1/4 cor. of Sec. 9 and the intersection of an ancient fence accepted as the S. line of the NW 1/4 of Sec 9, 84N, 5E.

## PLAN - VIEW

(Show a minimum of three reference ties to durable physical objects, relevant monuments and physical conditions that will enable recovery of the corner.)



I hereby certify that the survey work was completed and this certificate was prepared by me or under my direct personal supervision and that I am a duly registered land surveyor under the laws of the state of Iowa.

Signature: James L. Egger  
Name typed or printed: JAMES L. EGGER P.E. & L.S.

Date: Oct. 3, 1996 Reg. No. 7983

List Corners to be Indexed  
Corners Section Twp Range

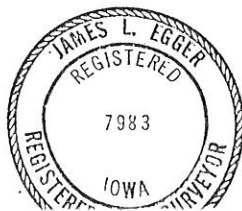
SW COR 9 84N 5E  
NE 1/4

FILE NO. 034742  
BOOK 1 PAGE 227

1996 OCT -4 AM 9:55

SHIRLY RITENOUR  
JACKSON COUNTY, IOWA  
RECORDER

SEAL





Document 10-2000

Book 2 Page 718 Type 15 001 Pages 1

Date 5/25/2010 Time 9:07 AM

Rec Amt \$9.00

ARLENE SCHAUF, RECORDER/REGISTRAR  
JACKSON COUNTY IOWA

PREPARED BY: MICHAEL J. WEBER, WEBER SURVEYING, LLC, 26789 46TH AVE, BERNARD, IA 52032 (563) 879-4173

## UNITED STATES PUBLIC LAND SURVEY CORNER CERTIFICATE OF

LAND SURVEY MONUMENTS SITUATED IN SECTION 9, TOWNSHIP 84 NORTH, RANGE 5 EAST  
OF THE FIFTH PRINCIPAL MERIDIAN, JACKSON COUNTY, IOWA.

PREVIOUSLY RECORDED BOOK 1 PAGE 283

(book, page, document number, etc.)

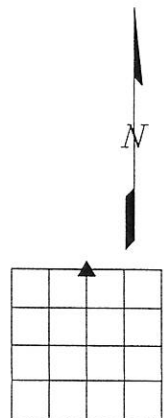
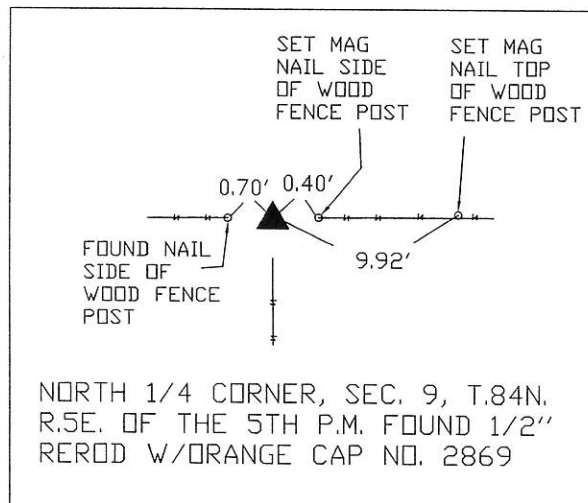
(Show reason for preparing this certificate, the evidence and detailed procedures used in establishing the corner positions and monumentation found or placed.)

Monument Description and Remarks:

-NORTH 1/4 CORNER, SEC. 9, T.84N. R.5E. OF THE 5TH P.M. FOUND 1/2" REROD W/ORANGE  
CAP NO. 2869 PREVIOUSLY RECORDED IN SECTION CORNER CERTIFICATE BOOK 1 PAGE 283,  
ESTABLISHED NEW TIES

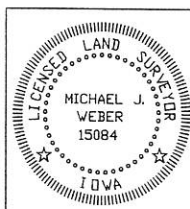
(Show a minimum of three reference ties to durable physical objects, relevant monuments and physical conditions that will enable recovery of the corner.)

### PLAN - VIEW



DRAWING NOT TO SCALE

DWG. NO. TEBBE-E



I HEREBY CERTIFY THAT THIS LAND SURVEYING DOCUMENT WAS  
PREPARED AND THE RELATED SURVEY WORK WAS PERFORMED BY ME OR  
UNDER MY DIRECT PERSONAL SUPERVISION AND THAT I AM A DULY  
LICENSED LAND SURVEYOR UNDER THE LAWS OF THE STATE OF IOWA.

*Michael J. Weber* May 7, 2010  
(DATE)

MICHAEL J. WEBER  
LICENSE NUMBER 15084

MY LICENSE RENEWAL DATE IS DECEMBER 31, 2011

SHEETS COVERED BY THIS SEAL: THIS SHEET

List Corners to be Indexed  
Corner Sec Twp Range  
N 1/4 COR. 9 84N 5E

Book 2 Page 718