

## UNITED STATES PUBLIC LAND SURVEY CORNER CERTIFICATE

OF

Land Survey Monuments situated in Section 5, Township 84 N, Range 5 E, of the Fifth Principal Meridian, JACKSON County, Iowa.  
 usly recorded in \_\_\_\_\_ in County Recorder's Office.

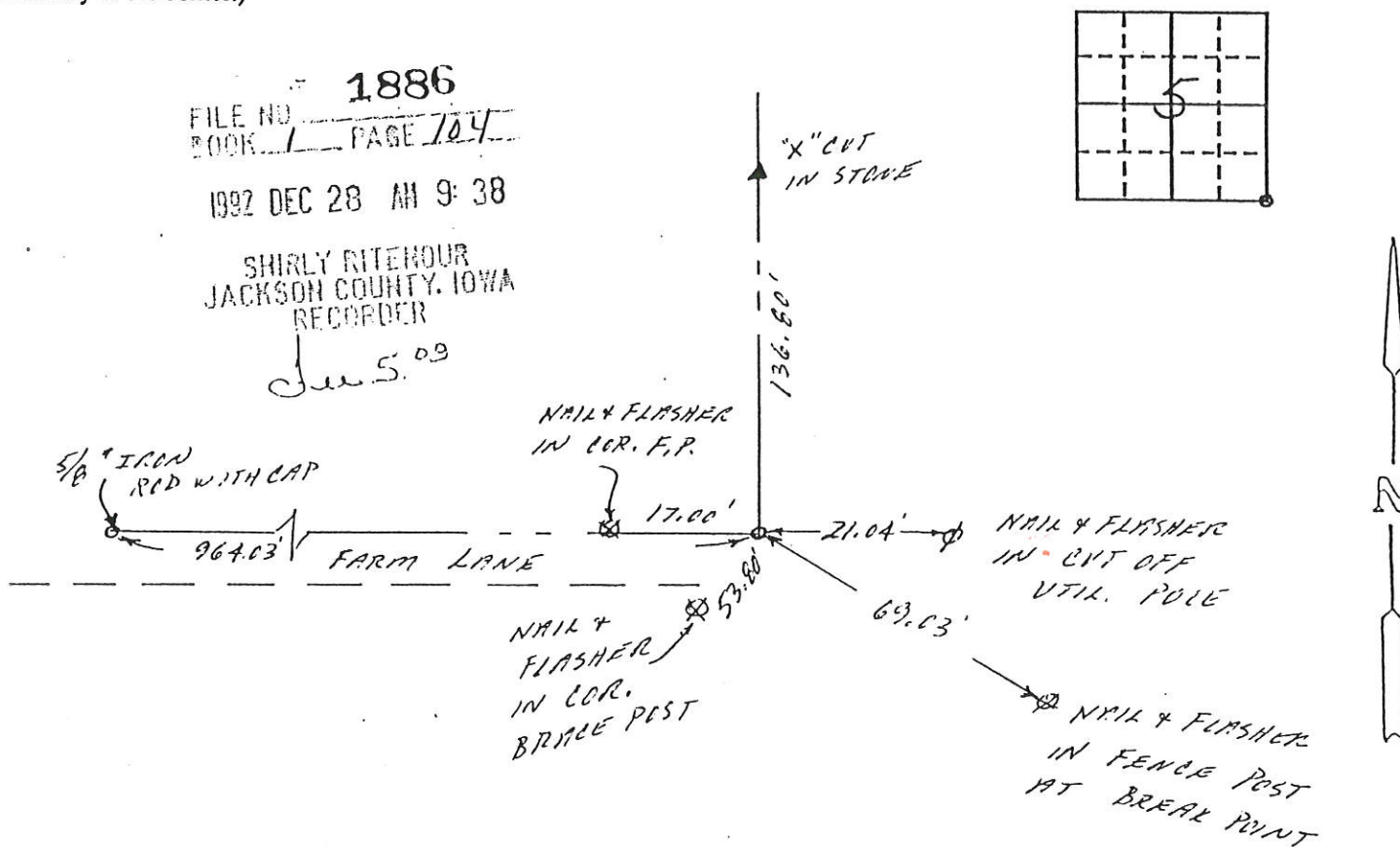
(book, page, document number, etc.)

(Show reason for preparing this certificate, the evidence and detailed procedures used in establishing the corner positions and monumentation found or placed.)

Monument Description and Remarks: SET RAILROAD SPIKE AT SE CORNER  
SECTION 5-84-5 ESTABLISHED BASED ON ADJACENT  
FENCE LINES TO THE NORTH AND WEST OF SAID CORNER.  
SPIKE IS APPROXIMATELY 16.5' N. OF & FARM LANE GOING  
WEST AND IN & FARM LANE TO NORTH

## PLAN - VIEW

(Show a minimum of three reference ties to durable physical objects, relevant monuments and physical conditions that will enable recovery of the corner.)



I hereby certify that the survey work was completed and this certificate prepared by me or under my direct personal supervision and that I am a duly registered land surveyor under the laws of the state of Iowa.

Signature: Laverne F. Vander Schueren  
 Name typed or printed: LAVERNE F. VANDER SCHUEREN

Date: 12-24-92 Reg. No. 11064

Corners	List Corners to be Indexed Section	Twp	Range
SE	5	84N	5E



Document 10-3546

Book 2 Page 728 Type 15 001 Pages 1

Date 9/01/2010 Time 11:06 AM

Rec Amt \$9.00

ARLENE SCHAUF, RECORDER/REGISTRAR  
JACKSON COUNTY IOWA

PREPARED BY: MICHAEL J. WEBER, WEBER SURVEYING, LLC, 26789 46TH AVE, BERNARD, IA 52032 (563) 879-4173

## UNITED STATES PUBLIC LAND SURVEY CORNER CERTIFICATE OF

LAND SURVEY MONUMENTS SITUATED IN SECTION 5, TOWNSHIP 84 NORTH, RANGE 5 EAST  
OF THE FIFTH PRINCIPAL MERIDIAN, JACKSON COUNTY, IOWA.

PREVIOUSLY RECORDED NONE UNLESS NOTED BELOW

(book, page, document number, etc.)

(Show reason for preparing this certificate, the evidence and detailed procedures used in establishing the corner positions and monumentation found or placed.)

Monument Description and Remarks:

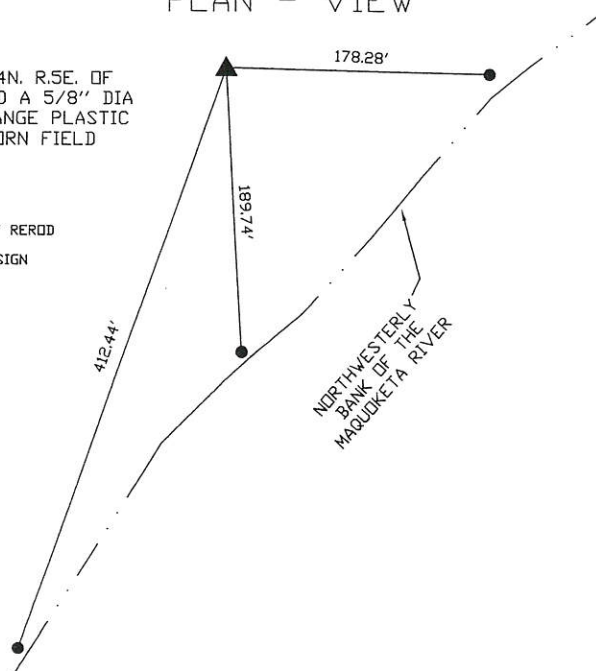
5  
-CENTER, SEC. 32, T.85N. R.4E. OF THE 5TH P.M. PLACED A 5/8" DIA STEEL REROD W/ORANGE PLASTIC CAP NO. 15084 ESTABLISHED CORNER AT THE INTERSECTION OF LINES BETWEEN THE EAST & WEST 1/4 CORNERS AND THE NORTH AND SOUTH 1/4 CORNERS

(Show a minimum of three reference ties to durable physical objects, relevant monuments and physical conditions that will enable recovery of the corner.)

### PLAN - VIEW

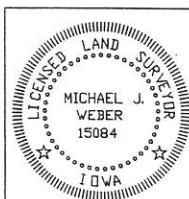
CENTER, SEC. 5, T.84N. R.5E. OF  
THE 5TH P.M. PLACED A 5/8" DIA  
STEEL REROD W/ORANGE PLASTIC  
CAP NO. 15084 IN CORN FIELD

ALL TIES ARE FOUND 5/8" REROD  
W/BLUE CAP MARKED NRCS  
BOUNDARY WITH A STEEL SIGN  
POST NEXT TO THEM



DRAWING NOT TO SCALE

DWG. NO. HANSEN



I HEREBY CERTIFY THAT THIS LAND SURVEYING DOCUMENT WAS  
PREPARED AND THE RELATED SURVEY WORK WAS PERFORMED BY ME OR  
UNDER MY DIRECT PERSONAL SUPERVISION AND THAT I AM A DULY  
LICENSED LAND SURVEYOR UNDER THE LAWS OF THE STATE OF IOWA.  
*Michael J. Weber* August 23, 2010  
MICHAEL J. WEBER (DATE)  
LICENSE NUMBER 15084  
MY LICENSE RENEWAL DATE IS DECEMBER 31, 2011  
SHEETS COVERED BY THIS SEAL: THIS SHEET

List Corners to be Indexed		
Corner	Sec	Twp Range
CENTER	5	84N 5E

Book 2 Page 728