



Document 07-431

Book 2 Page 512 Type 15 001 Pages 1

Date 2/01/2007 Time 10:10 AM

Rec Amt \$7.00

ARLENE SCHAUF, RECORDER
JACKSON COUNTY IOWA

PREPARED BY: EGGER ENGINEERING AND LAND SURVEYING, P.C. 2395 TECH DR. STE. 2 BETTENDORF, IA 52722

UNITED STATES PUBLIC LAND SURVEY CORNER CERTIFICATE
OF

Land Survey Monument situated in Section 4, Township 84N, Range 5E, of the Fifth Principal Meridian,
JACKSON County, Iowa. Previously recorded in NO RECORDS EXIST in County Recorder's Office.

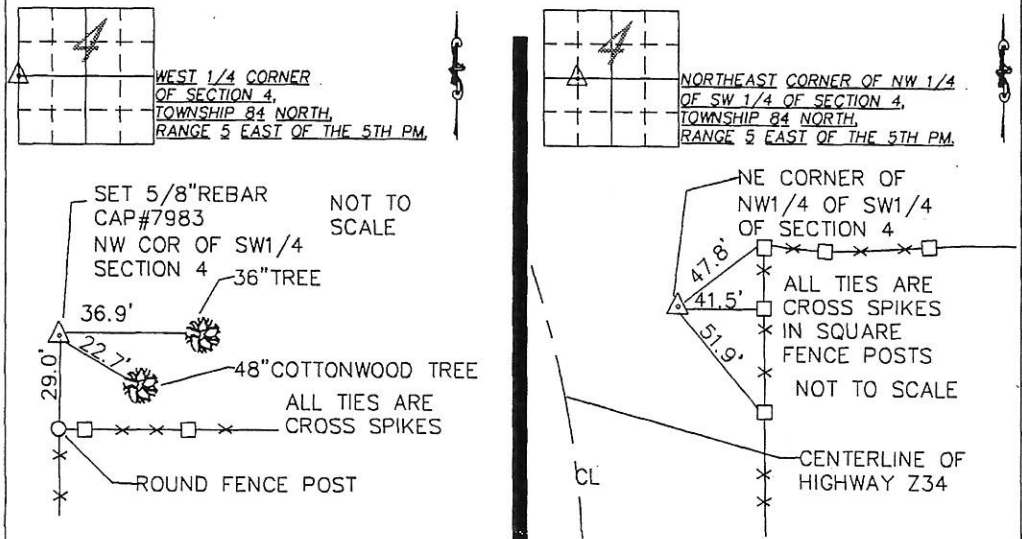
(Book, Page, Document Number, etc.)

(Show reason for preparing this certificate, the evidence and detailed procedures used in establishing the corner positions and monumentation found or placed.)

Monument Description and Remarks: RESET THE W 1/4 CORNER AND NE CORNER OF THE NW 1/4 OF THE SW 1/4 OF SECTION 4 BY TIEING INTO EXISTING SECTION CORNERS AND CALCULATING THE POSITIONS FROM THE EXISTING MONUMENTS.

PLAN - VIEW

(Show a minimum of three reference ties to durable physical objects, relevant monuments and physical conditions that will enable recovery of the corner.)



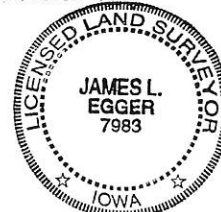
I hereby certify that the survey work was completed and this certificate was prepared by me or under my direct personal supervision and that I am a duly registered land surveyor under the laws of the state of Iowa.

Signature: James L. Egger
James L. Egger P.E. & L.S.

Dated: JAN. 30, 2007 Reg. No. 7983
My registration renewal date is December 31, 2007

SEAL

Corners	Section	Twp.	Range
W 1/4 CORNER	4	84N	5E
NE CORNER of NW 1/4 of SW 1/4	4	84N	5E



Book 2 Page 512