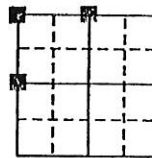
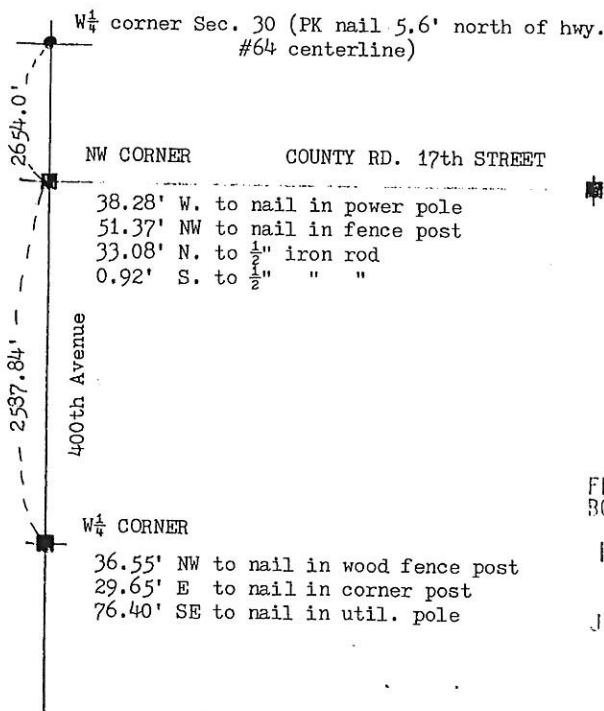


Land Survey Monuments situated in Section 31, Township 84 N, Range 5 E, of the Fifth Principal Meridian, Jackson County, Iowa.
Previously recorded in ----- in County Recorder's Office.

Monument Description and Remarks: N $\frac{1}{4}$ CORNER: Found $\frac{1}{2}$ " iron rod as noted in survey plat
recorded in file 1E-13. W $\frac{1}{4}$ CORNER: This monument missing but was referred to in the
plat noted above. Reset with $\frac{1}{2}$ " iron rod by using data noted in said plat.
NW CORNER: Set $\frac{5}{8}$ " iron rod at record I.S.H.C. distance from W $\frac{1}{4}$ corner of sec. 30 (on
Hwy. 64), 2654.0'. The county road plan for grading 400th Ave. also noted the section
line to be at this location. The I.S.H.C. survey was dated 1938.

(Show a minimum of three reference ties to durable physical objects, relevant monuments and physical conditions that will enable recovery of the corner.)



N $\frac{1}{4}$ CORNER

28.26' N. to bent nail
in corner post
32.20' NE to nail in 2nd
brace post
43.45' NE to nail in post
26.80' SW to nail in
util. pole

FILE NO. 001071
BOOK 1 PAGE 247

1995 OCT 19 AM 9: 51

SHIRLY RITENOUR
JACKSON COUNTY, IOWA
RECORDER

June 6⁰⁰

I hereby certify that the survey work was completed and this land surveying document was prepared by me or under my direct personal supervision and that I am a duly registered land surveyor under the laws of the state of Iowa

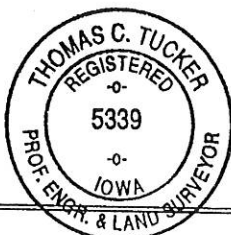
Signature: Thomas C. Tucker

Name typed or printed: Thomas C. Tucker

Date: 10/16/95 Reg. No. 5339

My registration renewal date is December 31, 1995

SEAL.



List Corners to be Indexed			
Corners	Section	Twp	Range
NW, W $\frac{1}{4}$, N $\frac{1}{4}$	31	84N	5E

4-4-03	See corner certificate	in Book 3	Page 104 as file # 03-1988 +
"	"		
4-4-03	"	in Book 3	Page 105 as file # 03-1989



Document 05-4543

Book 2 Page 398 Type 06 023 Pages 1
Date 11/08/2005 Time 8:06 AM
Rec Amt \$7.00

PHYLLIS M. GERLACH, RECORDER
JACKSON COUNTY IOWA

PREPARED BY: MICHAEL J. WEBER, WEBER SURVEYING, LLC, 26789 46TH AVE, BERNARD, IA 52032 (563) 879-4173

UNITED STATES PUBLIC LAND SURVEY CORNER CERTIFICATE OF

LAND SURVEY MONUMENTS SITUATED IN SECTION 31, TOWNSHIP 84 NORTH, RANGE 5 EAST
OF THE FIFTH PRINCIPAL MERIDIAN, JACKSON COUNTY, IOWA.
PREVIOUSLY RECORDED NONE UNLESS OTHERWISE NOTED

(book, page, document number, etc.)

(Show reason for preparing this certificate, the evidence and detailed procedures used in establishing the corner positions and monumentation found or placed.)

Monument Description and Remarks:

THE FOLLOWING CORNERS WERE USED IN PLAT OF SURVEY OF PARCEL C IN SECTION 31,

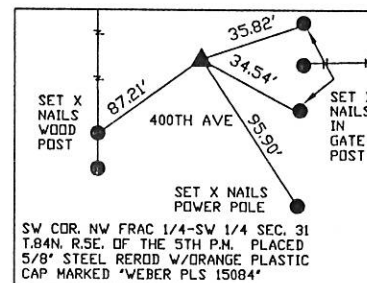
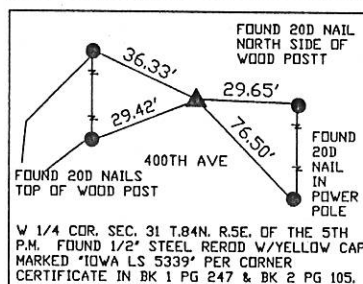
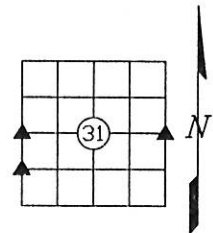
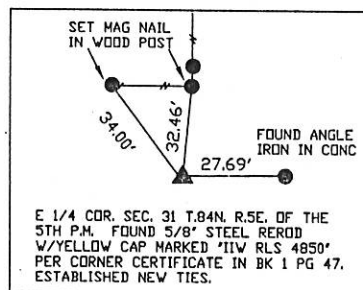
E 1/4 COR. SEC. 31 T.84N. R.5E. OF THE 5TH P.M. FOUND 5/8" STEEL ROD W/YELLOW CAP MARKED "IIV RLS 4850" PER CORNER CERTIFICATE IN BK 1 PG 47. ESTABLISHED NEW TIES.

W 1/4 COR. SEC. 31 T.84N. R.5E. OF THE 5TH P.M. FOUND 1/2" STEEL ROD W/YELLOW CAP MARKED "IOWA LS 5339" PER CORNER CERTIFICATE IN BK 1 PG 247 & BK 2 PG 105.

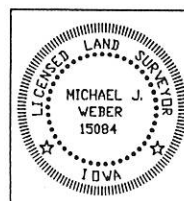
SW COR. NW FRAC 1/4-SW 1/4 SEC. 31 T.84N. R.5E. OF THE 5TH P.M. PLACED 5/8" STEEL ROD W/ORANGE PLASTIC CAP MARKED "WEBER PLS 15084", ESTABLISHED CORNER ONLINE AND MIDWAY BETWEEN THE FOUND W1/4 CORNER AND THE CALCULATED SW CORNER.

PLAN - VIEW

(Show a minimum of three reference ties to durable physical objects, relevant monuments and physical conditions that will enable recovery of the corner.)



DWG. NO. TRENKAMP



I HEREBY CERTIFY THAT THIS LAND SURVEYING DOCUMENT WAS
PREPARED AND THE RELATED SURVEY WORK WAS PERFORMED BY ME OR
UNDER MY DIRECT PERSONAL SUPERVISION AND THAT I AM A DULY
LICENSED LAND SURVEYOR UNDER THE LAWS OF THE STATE OF IOWA.

Michael J. Weber October 31, 2005
(DATE)
MICHAEL J. WEBER
LICENSE NUMBER 15084
MY LICENSE RENEWAL DATE IS DECEMBER 31, 2005

SHEETS COVERED BY THIS SEAL: 1

List Corners to be Indexed

Corner	Sec	Twp	Range
V 1/4 Corner	31	84N	5E
E 1/4 Corner	31	84N	5E
SW Corner	31	84N	5E
NW-SW			