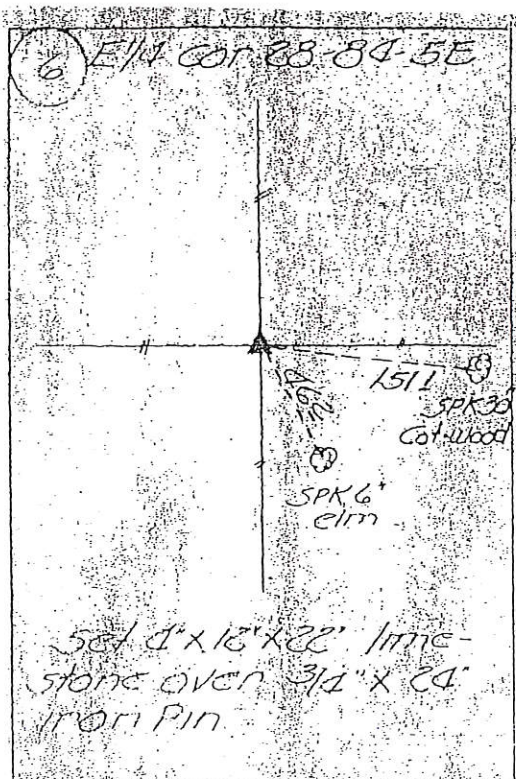
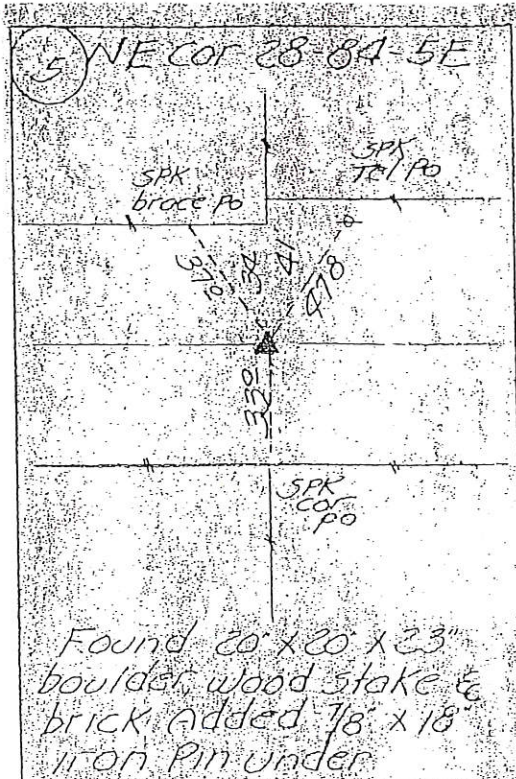
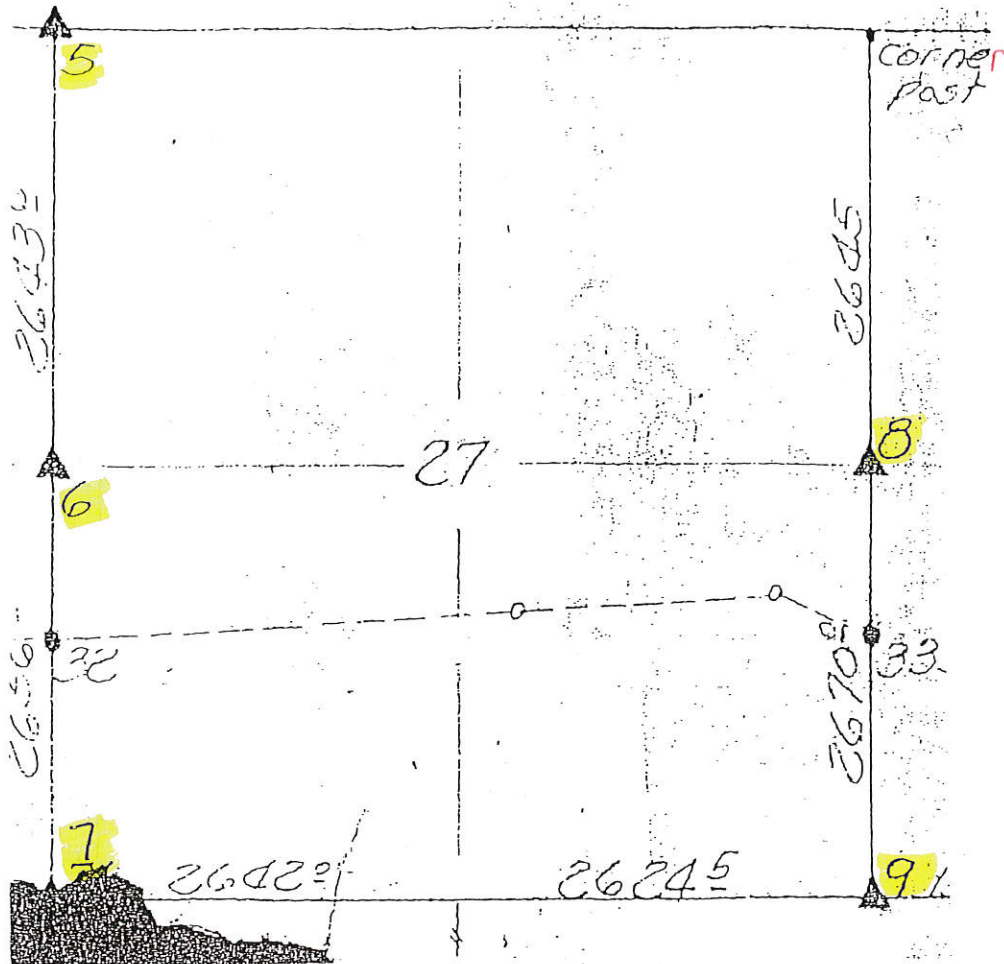
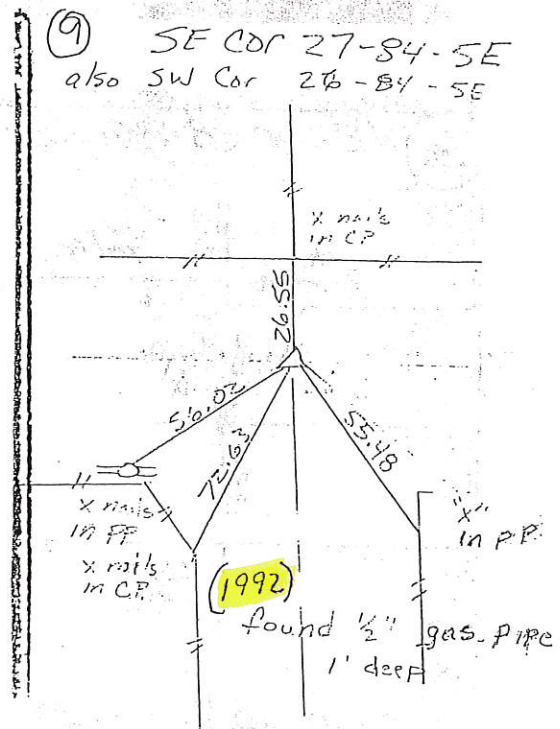
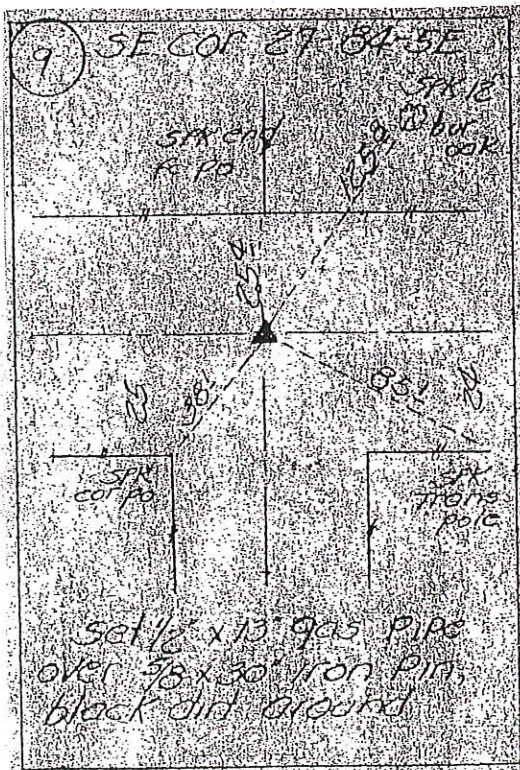
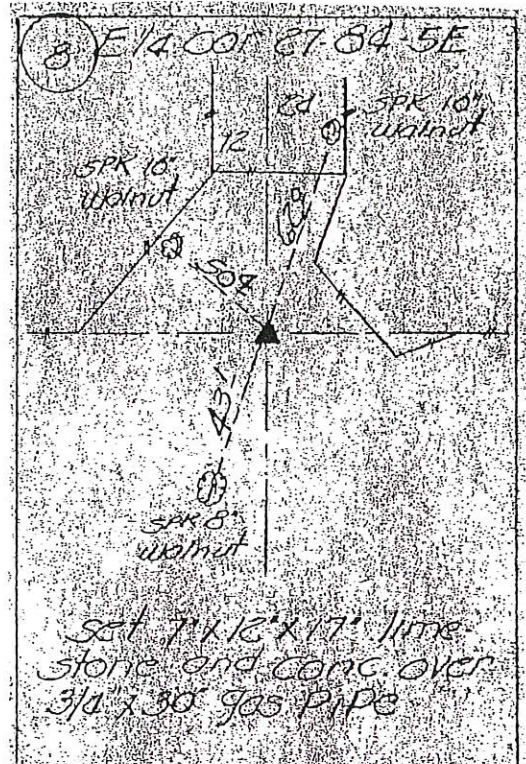
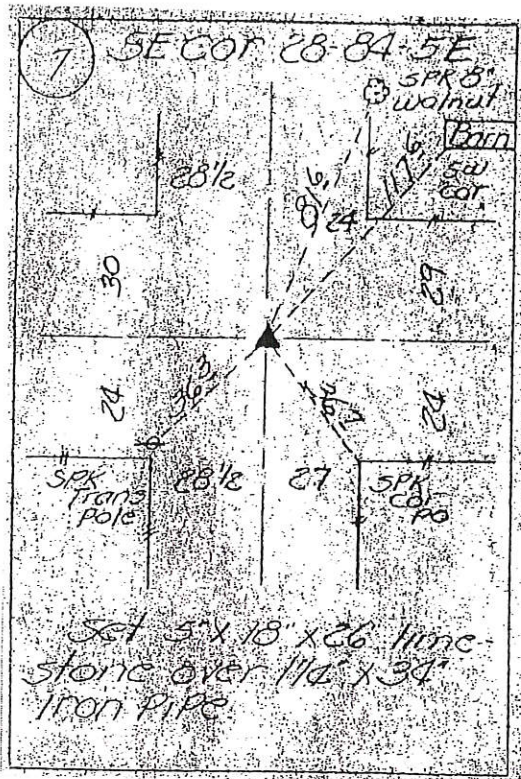


Sec. 27

LAND CORNER SURVEY
JACKSON CO T84N R5 and 6E
MADE FOR THE
IOWA STATE HIGHWAY COMMISSION
FOR ROW DESCRIPTIONS PRIMARY 64 PROJECT FA 170-C
BY G R ELLIOTT RLS 1841
JUNE 1939





UNITED STATES PUBLIC LAND SURVEY CORNER CERTIFICATE

OF

Land Survey Monuments situated in Section 27, Township 84N, Range 5E, of the Fifth Principal Meridian, Jackson County, Iowa.
 Previously recorded in County Engineers Office in County Records Office
 (book, page, document number, etc.)

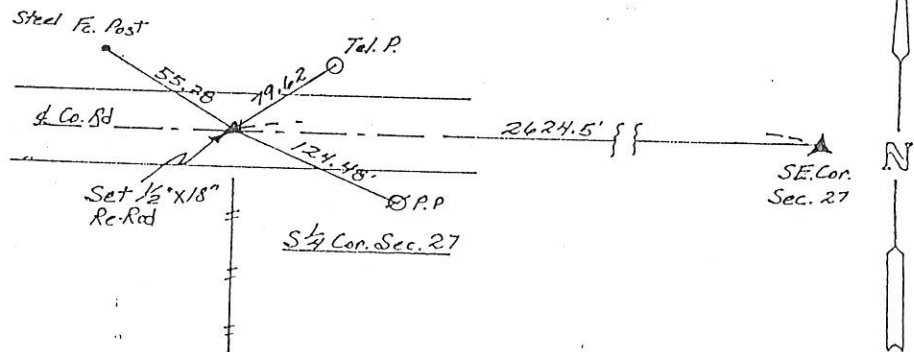
(Show reason for preparing this certificate, the evidence and detailed procedures used in establishing the corner positions and monumentation found or placed.)

Monument Description and Remarks: Set 1/2"x18" Re-rod in center of county road at a recorded distance of 2624.5 ft. from the S.E. Cor. of Sec. 27. Corner set is the S 1/4 of Sec.

27

PLAN - VIEW

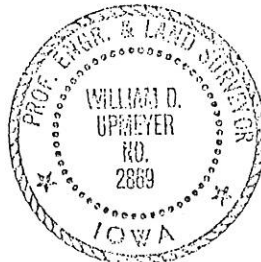
(Show a minimum of three reference ties to durable physical objects, relevant monuments and physical conditions that will enable recovery of the corner.)



I hereby certify that the survey work was completed and this certificate was prepared by me or under my direct personal supervision and that I am a duly registered land surveyor under the laws of the state of Iowa.

Signature: William D. Upmeyer
 Name typed or printed: William D. Upmeyer

Date: 12-17-90 Reg. No. 2869



SEAL

Corners	List Corners to be Indexed	Section	Twp	Range
S 1/4	27	84N	5E	

FILE NO. 1325
 BOOK 1 PAGE 25

1990 DEC 18 AM 11:26

SHIRLEY RITENOUR
 JACKSON COUNTY, IOWA
 RECORDER

Fee \$5.00

BOOK 1 PAGE 25

99 0780

BOOK 1 PAGE 374

99 FEB 26 11:17

Dec 6, 2000

PHYLLIS H. DEBLACH
JACKSON COUNTY, IOWAMOHN SURVEYING ROGER R. MOHN 1888 GREAT RIVER ROAD LANSING, IOWA 538-4067
RMS TIESHEET.DWG JACKSON Co. CONSERVATION

SLSI 9-90

UNITED STATES PUBLIC LAND SURVEY CORNER CERTIFICATE

OF

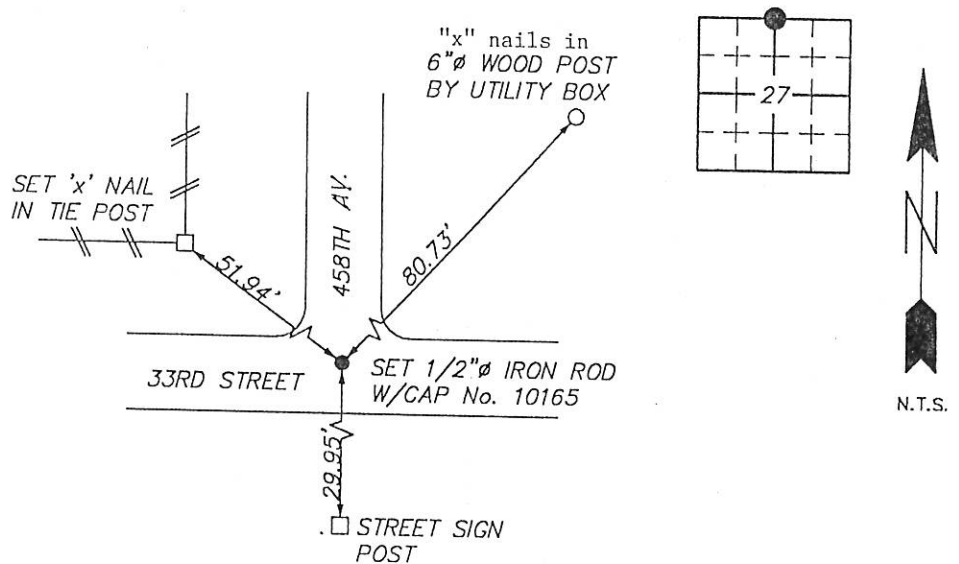
Land Survey Monuments situated in Section 27, Township 84 NORTH, Range 5 EAST, of the Fifth Principal Meridian, JACKSON County, Iowa.
Previously recorded in no record on file in County Recorder's Office.
(book, page, document number, etc.)

(Show reason for preparing this certificate, the evidence and detailed procedures used in establishing the corner positions and monumentation found or placed.)

Monument Description and Remarks: Established corner using proportioned distances
from the NE corner and from the NW corner. Set 1/2" iron rod w/cap.

PLAN - VIEW

(Show a minimum of three reference ties to durable physical objects, relevant monuments and physical conditions that will enable recovery of the corner.)



I hereby certify that this land surveying document was prepared by me or under my direct personal supervision and that I am a duly Registered Land Surveyor under the laws of the state of Iowa.

Roger R. Mohn 2/24, 1999
 ROGER R. MOHN, P.E. & L.S. Iowa Registration No. 10165
 My registration expires December 31, 2000

SEAL



Corners	List Corners to be Indexed	Section	Twp	Range
N1/4 COR. OF	27	84N	5E	

99-0781

BOOK 7 PAGE 375

99 FEB 26 AM 11:17

See # 6.02

PHYLLIS H. CEBLACH
JACKSON COUNTY, IOWA

RECORDER

MOHN SURVEYING ROGER R. MOHN 1888 GREAT RIVER ROAD LANSING, IOWA 52151 (319) 538-4067

RMS TIESHEET.DWG JACKSON Co. CONSERVATION

SLSI 9-00

UNITED STATES PUBLIC LAND SURVEY CORNER CERTIFICATE

OF

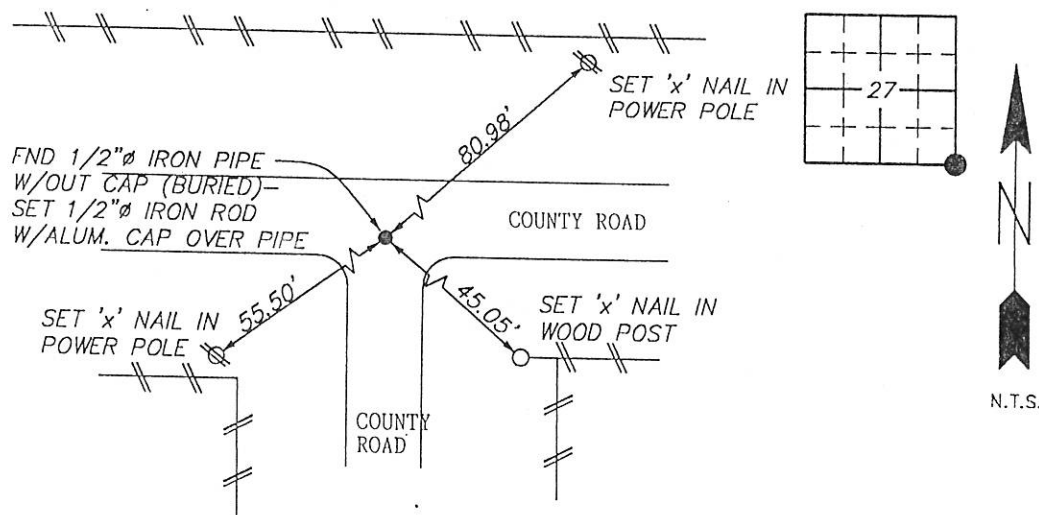
Land Survey Monuments situated in Section 27, Township 84 NORTH, Range 5 EAST, of the Fifth Principal Meridian, JACKSON County, Iowa.
Previously recorded in no record on file in County Recorder's Office.
(book, page, document number, etc.)

(Show reason for preparing this certificate, the evidence and detailed procedures used in establishing the corner positions and monumentation found or placed.)

Monument Description and Remarks: Found 1/2" iron pipe w/o cap. (buried 18") Set 1/2" iron rod w/cap over pipe.

PLAN - VIEW

(Show a minimum of three reference ties to durable physical objects, relevant monuments and physical conditions that will enable recovery of the corner.)



I hereby certify that this land surveying document was prepared by me or under my direct personal supervision and that I am a duly Registered Land Surveyor under the laws of the state of Iowa.

Roger R. Mohn 2/24, 1999
ROGER R. MOHN, P.E. & L.S. Iowa Registration No. 10165
My registration expires December 31, 2000

Corners	List Corners to be Indexed	Section	Twp	Range
SE COR. OF	27	84N	5E	

SEAL



99-0782

BOOK 7 PAGE 376

99 Feb 26 2:11 PM

99 Feb 26 2:11 PM
PHYLLIS M. CLARKE
JACKSON COUNTY, IOWA
RECORDER

MOHN SURVEYING ROGER R. MOHN 1888 GREAT RIVER ROAD LANSING, IOWA 52151 (319) 538-4067
RMS TIESHEET.DWG JACKSON Co. CONSERVATION SLSI 9-90

UNITED STATES PUBLIC LAND SURVEY CORNER CERTIFICATE

OF
Land Survey Monuments situated in Section 27, Township 84 NORTH, Range
5 EAST, of the Fifth Principal Meridian, JACKSON County, Iowa.
Previously recorded in no record on file in County Recorder's Office.
(book, page, document number, etc.)

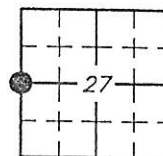
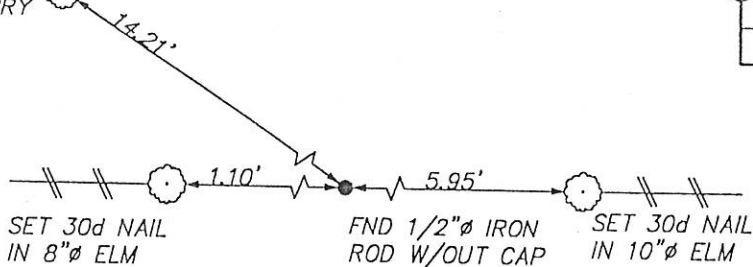
(Show reason for preparing this certificate, the evidence and detailed procedures used in establishing the corner positions and monumentation found or placed.)

Monument Description and Remarks: Found 1/2" iron rod w/o cap.

PLAN - VIEW

(Show a minimum of three reference ties to durable physical objects, relevant monuments and physical conditions that will enable recovery of the corner.)

SET 30d NAIL IN
6"Ø HACKBERRY

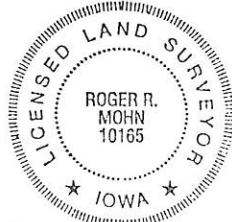


N.T.S.

I hereby certify that this land surveying document was prepared by me or under my direct personal supervision and that I am a duly Registered Land Surveyor under the laws of the state of Iowa.

Roger R. Mohn 2/24 1999
ROGER R. MOHN, P.E. & L.S. Iowa Registration No. 10165
My registration expires December 31, 2000

SEAL



Corners	Section	Twp	Range
W1/4 COR. OF	27	84N	5E

99-0783

BOOK 1 PAGE 327

99 FEB 26 10 11 17

See 6.00

PHYLLIS M. GERLACH
JACKSON COUNTY, IOWA

MOHN SURVEYING ROGER R. MOHN 1888 GREAT RIVER ROAD LANSING, IOWA 52009-538-4067

RMS TIESHEET.DWG JACKSON Co. CONSERVATION

SLSI 9-90

UNITED STATES PUBLIC LAND SURVEY CORNER CERTIFICATE

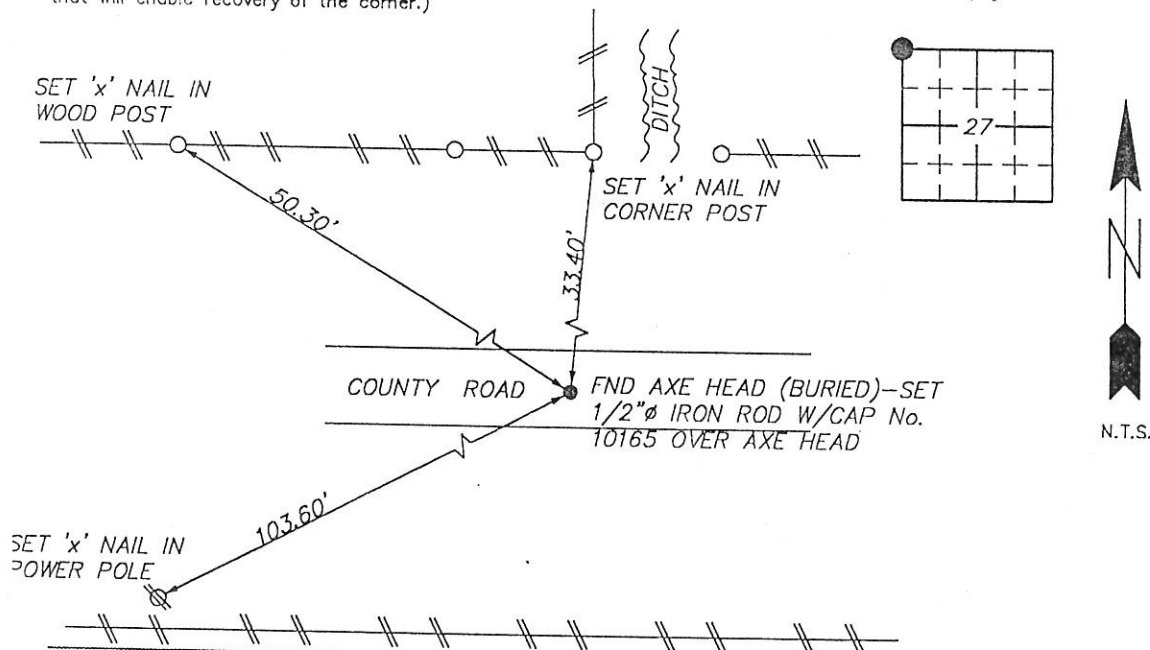
OF
Land Survey Monuments situated in Section 27, Township 84 NORTH, Range 5 EAST, of the Fifth Principal Meridian, JACKSON County, Iowa.
Previously recorded in no record on file in County Recorder's Office.
(book, page, document number, etc.)

(Show reason for preparing this certificate, the evidence and detailed procedures used in establishing the corner positions and monumentation found or placed.)

Monument Description and Remarks: Found axe head buried in roadway in upright position.
Position checks with distances to other corners in the section. Set 1/2" iron rod
over the axe head.

PLAN - VIEW

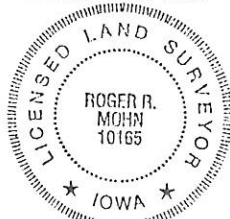
(Show a minimum of three reference ties to durable physical objects, relevant monuments and physical conditions that will enable recovery of the corner.)



I hereby certify that this land surveying document was prepared by me or under my direct personal supervision and that I am a duly Registered Land Surveyor under the laws of the state of Iowa.

Roger R. Mohn 2/24, 1999
ROGER R. MOHN, P.E. & L.S. Iowa Registration No. 10165
My registration expires December 31, 2000

SEAL



Corners	List Corners to be Indexed	Section	Twp	Range
NW COR. OF	27	84N	5E	