

# UNITED STATES PUBLIC LAND SURVEY CORNER CERTIFICATE

OF

Land Survey Monuments situated in Section 24, Township 84 N, Range 5E, of the Fifth Principal Meridian, JACKSON County, Iowa.  
Previously recorded in \_\_\_\_\_ in County Recorder's Office.  
(book, page, document number, etc.)

(Show reason for preparing this certificate, the evidence and detailed procedures used in establishing the corner positions and monumentation found or placed.)

Monument Description and Remarks:

NE COR. = P.K. NAIL SET OVER IRON MON. FOUND 0.5' WEST OF  $\phi$ ,  $\phi$

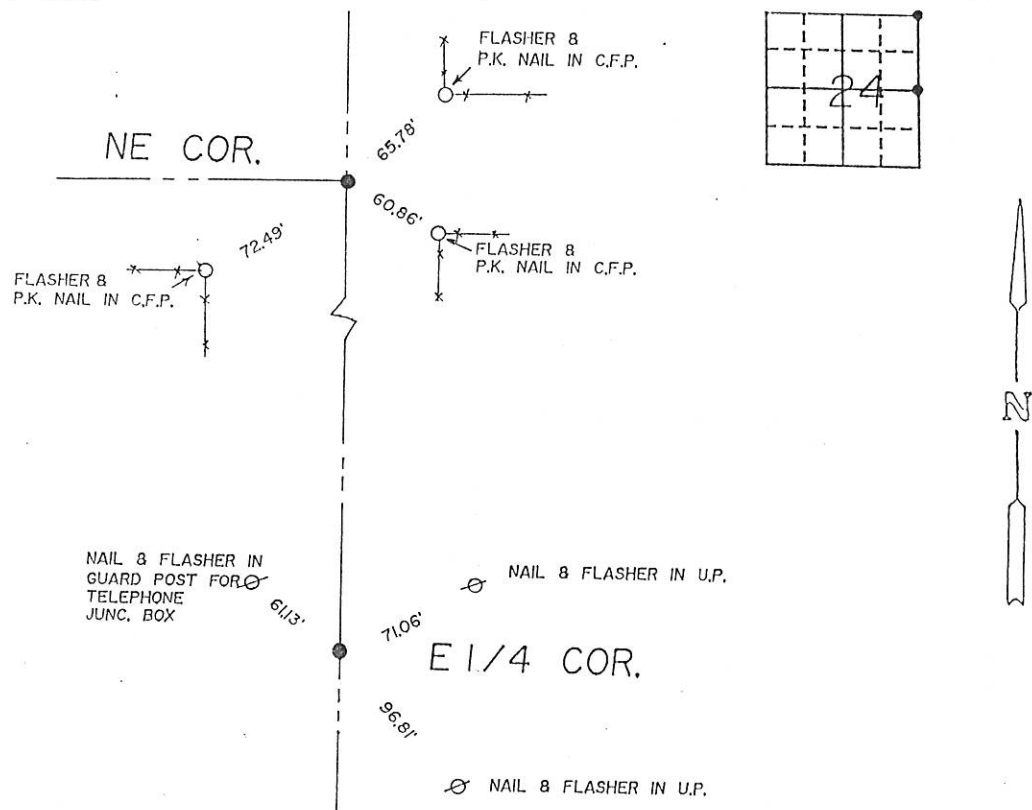
E 1/4 COR. = P.K. NAIL 1.5' WEST AND 9' NORTH OF  $\phi$ ,  $\phi$

C.F.P. = CORNER FENCE POST

U.P. = UTILITY POLE

## PLAN - VIEW

(Show a minimum of three reference ties to durable physical objects, relevant monuments and physical conditions that will enable recovery of the corner.)



I hereby certify that the survey work was completed and this certificate was prepared by me or under my direct personal supervision and that I am a duly registered land surveyor under the laws of the state of Iowa.

Signature: LaVerne F. Vander Schaaf  
Name typed or printed: LAVERNE F. VANDER SCHAAF  
Date: 7/26/23 Reg. No. 11184

SEAL



Corners	List Corners to be Indexed		
	Section	Twp	Range
NE COR.	24	84	5
E 1/4 COR.	24	84	5

FILE NO 000325  
BOOK 1 PAGE 154

1393 AUG -4 AM 10:10

SHIRLY RITENOUR  
JACKSON COUNTY, IOWA  
RECORDER

*du 6 00*



Document 11-634

Book 2 Page 760 Type 15 001 Pages 1

Date 2/15/2011 Time 8:35 AM

Rec Amt \$9.00

PREPARED BY:  
WILLIAM HOLT, PLS  
NORWEST SURVEYING SERVICES, INC.  
301 E LINCOLNWAY  
MORRISON, IL 61270

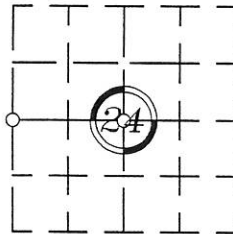
ARLENE SCHAUF, RECORDER/REGISTRAR  
JACKSON COUNTY IOWA

## UNITED STATES PUBLIC LAND SURVEY CORNER CERTIFICATE OF

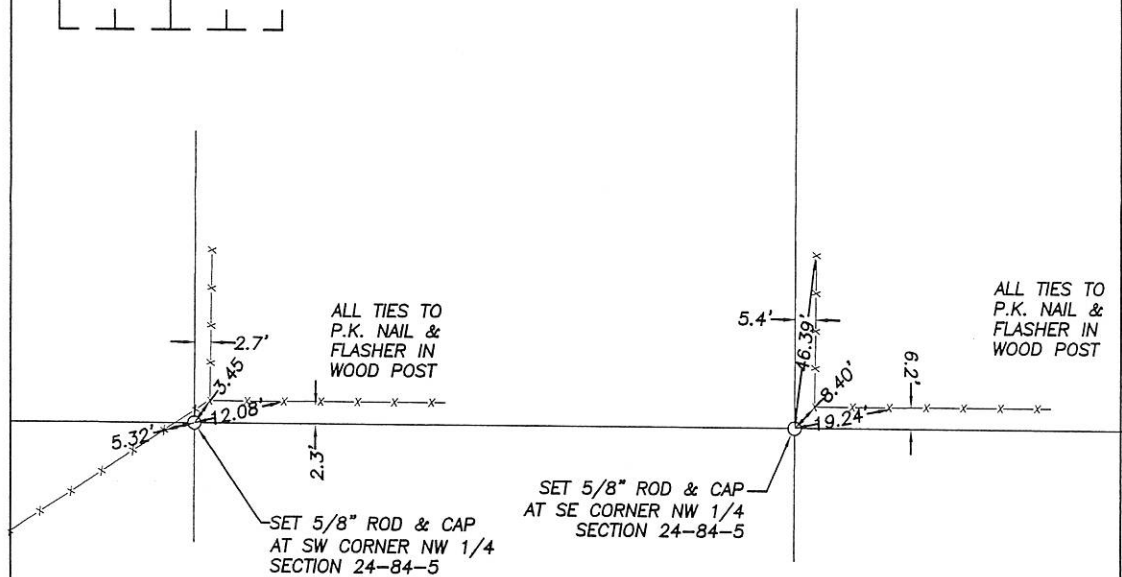
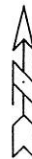
Land Survey Monuments in Section 24 in Township 84 North (T84N), Range 5 East (R5E)  
of the Fifth Principal Meridian (5th PM), Jackson County, Iowa. (Not Previously Recorded)

Monuments were placed at the Section corners in Section 24 per the descriptions below.

These corner locations were established at a prorata location using existing monuments, fences and  
occupation lines within this and adjoining Sections.



### PLAN VIEW



Project No. 2011002

I hereby certify that the survey work was completed  
and this land surveying document was prepared by  
me or under my direct personal supervision and  
that I am a duly registered land surveyor under the  
laws of the State of Iowa.

Signature: William E. Holt

William E. Holt

Iowa Registration No. 14105

My Registration Renews on December 31, 2012

Dated this 15<sup>th</sup> day of January 2011 C.E.



### Corners to be Indexed

Corner	Section	Township	Range
SE CORNER NW 1/4	24	84N	5E
SW CORNER NW 1/4	24	84N	5E

Book 2 Page 760