

UNITED STATES PUBLIC LAND SURVEY CORNER CERTIFICATE

OF

Land Survey Monuments situated in Section 22, Township 84 NORTH, Range 5 EAST, of the Fifth Principal Meridian, JACKSON County, Iowa.
Previously recorded in _____ in County Recorder's Office.

(book, page, document number, etc.)

(Show reason for preparing this certificate, the evidence and detailed procedures used in establishing the corner positions and monumentation found or placed.)

Monument Description and Remarks: ESTABLISHED 8 SET 5/8" CAPPED RODS AT THE SOUTHEAST

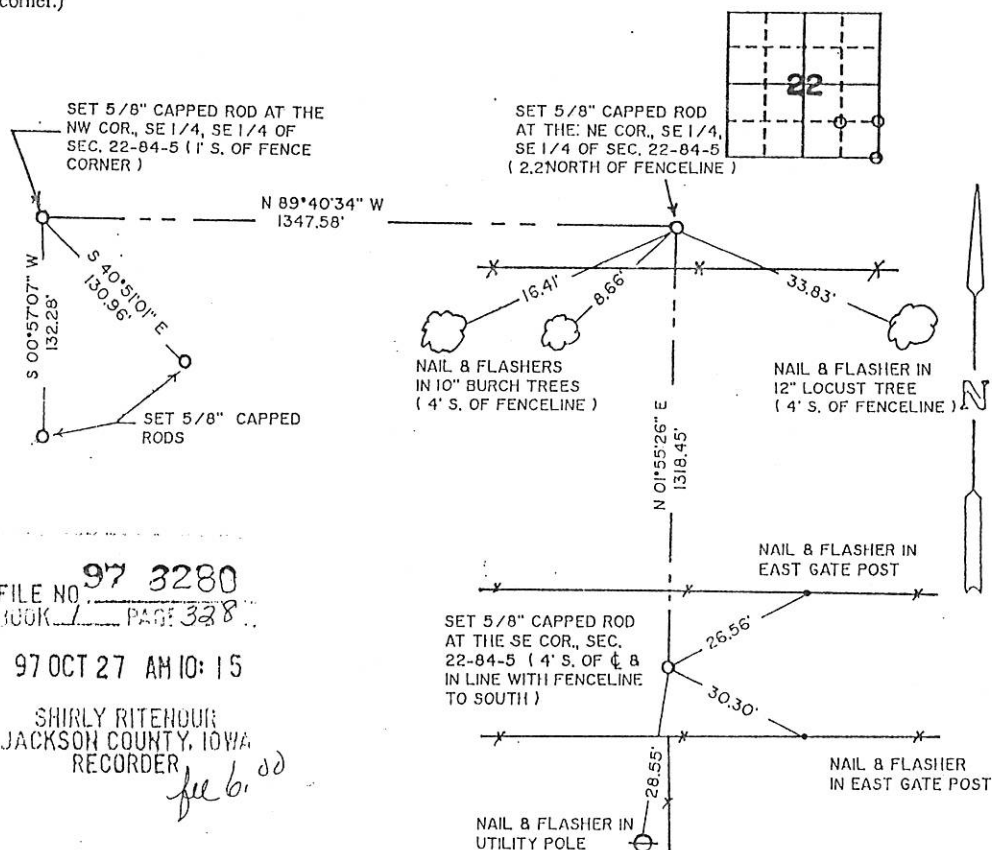
CORNER OF SECTION 22 & AT THE NW CORNER, SE 1/4, SE 1/4 OF SECTION 22 & AT THE NE CORNER,

SE 1/4, SE 1/4 OF SECTION 22 AT PRORATA LOCATIONS USING EXISTING MONUMENTS, FENCES &

OCCUPATIONS IN SECTIONS 22, 23, 26 & 27.

PLAN - VIEW

(Show a minimum of three reference ties to durable physical objects, relevant monuments and physical conditions that will enable recovery of the corner.)



FILE NO. 97 3280
BOOK 1 PAGE 328

97 OCT 27 AM 10:15

SHIRLY RITENOUR
JACKSON COUNTY, IOWA
RECORDER

fee 6.00

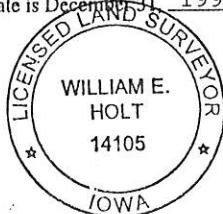
I hereby certify that the survey work was completed and this land surveying document was prepared by me or under my direct personal supervision and that I am a duly registered land surveyor under the laws of the state of Iowa

Signature: William E. Holt
Name typed or printed: William E. Holt

Date: Oct. 24, 1997 Reg. No. 14105

My registration renewal date is December 31, 1998

SEAL



Corners	List Corners to be Indexed Section	Twp	Range
NW COR., SE 1/4, SE 1/4	22	84	5
NE COR., SE 1/4, SE 1/4	22	84	5
SE CORNER	22	84	5

UNITED STATES PUBLIC LAND SURVEY CORNER CERTIFICATE OF

Land Survey Monuments in Section 22 in Township 84 North (T84N), Range 5 East (R5E) of the Fifth Principal Meridian (5th PM), Jackson County, Iowa. (Not Previously Recorded)

A Monument was placed at the Southwest corner of the Southeast Quarter (SE 1/4) of the Southeast Quarter (SW 1/4) of Section 22, per the description provided below.

This Corner location was established at prorata locations using existing monuments, fences and occupation lines within this and adjoining Sections.

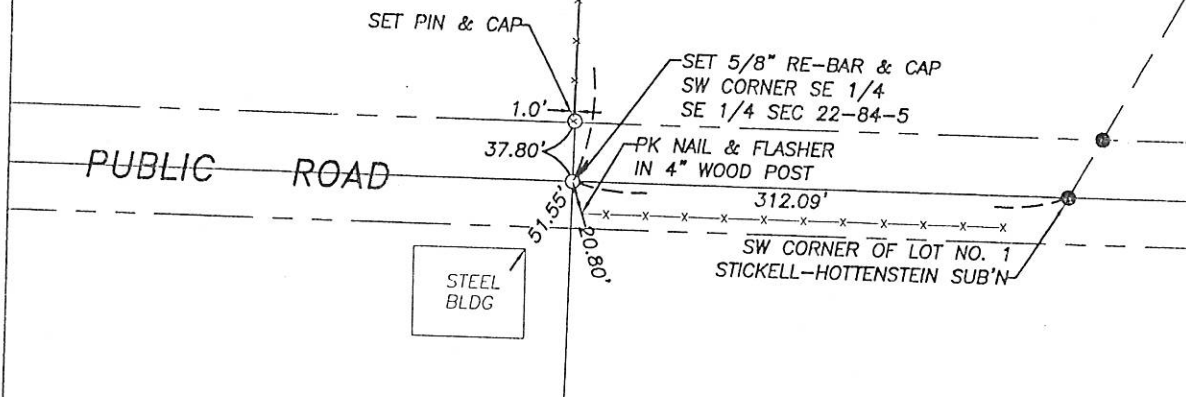
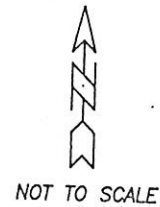
PLAN VIEW

FILE NO. 03-1110
PAGE 612

03 FEB 28 AM 10:45

PHYLLIS M. GERLACH
JACKSON COUNTY, IOWA
RECORDER

Fee 12.00



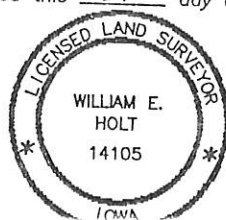
Project No. 2003018

I hereby certify that the survey work was completed and this land surveying document was prepared by me or under my direct personal supervision and that I am a duly registered land surveyor under the laws of the State of Iowa.

Signature: William E. Holt
William E. Holt
Iowa Registration No. 14105

My Registration Renews on December 31, 2004

Dated this 14th day of FEBRUARY, 2003 C.E.



Corners to be Indexed

Corner	Section	Township	Range
SW Corner			
SE 1/4 SE 1/4	22	84N	5E
NW Corner			
NE 1/4 NE 1/4	27	84N	5E