



Document 09-1212

Book 2 Page 668 Type 15 001 Pages 1  
Date 3/31/2009 Time 3:41 PM  
Rec Amt \$7.00

ARLENE SCHAUF, RECORDER/REGISTRAR  
JACKSON COUNTY IOWA

PREPARED BY: MICHAEL J. WEBER, WEBER SURVEYING, LLC, 26789 46TH AVE, BERNARD, IA 52032 (563) 879-4173

## UNITED STATES PUBLIC LAND SURVEY CORNER CERTIFICATE OF

LAND SURVEY MONUMENTS SITUATED IN SECTION 18, TOWNSHIP 84 NORTH, RANGE 5 EAST  
OF THE FIFTH PRINCIPAL MERIDIAN, JACKSON COUNTY, IOWA.  
PREVIOUSLY RECORDED NONE UNLESS OTHERWISE NOTED  
(book, page, document number, etc.)

(Show reason for preparing this certificate, the evidence and detailed procedures used in establishing the corner positions and monumentation found or placed.)

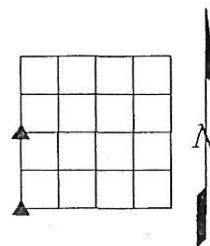
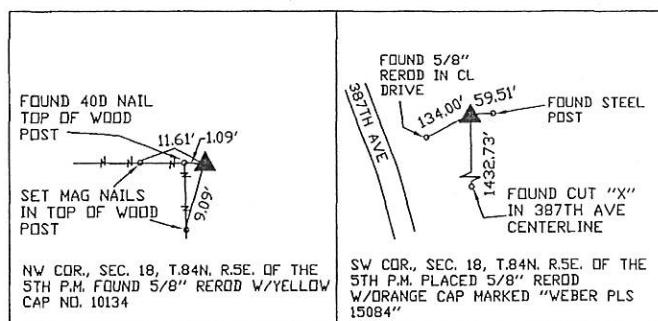
### Monument Description and Remarks:

-NW COR., SEC. 18, T.84N. R.5E. OF THE 5TH P.M. FOUND 5/8" REROD W/YELLOW CAP NO. 10134 AS SHOWN IN CORNER CERTIFICATE BOOK 1 PAGE 430 INDEXED AS THE SE CORNER OF SECTION 12, T84E R4E, AND BOOK 2 PAGE 75 INDEXED AS THE NE CORNER OF SECTION 13, T84E R4E

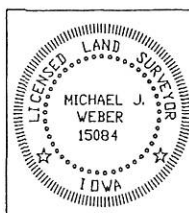
-SW COR., SEC. 18, T.84N. R.5E. OF THE 5TH P.M. PLACED 5/8" REROD W/ORANGE CAP MARKED "WEBER PLS 15084" PREVIOUSLY RECORDED IN CORNER CERTIFICATE BOOK 1 PAGE 323 INDEXED AS THE NE CORNER OF SECTION 24, T84E R4E,

(Show a minimum of three reference ties to durable physical objects, relevant monuments and physical conditions that will enable recovery of the corner.)

### PLAN - VIEW



DWG. NO. REISTROF



I HEREBY CERTIFY THAT THIS LAND SURVEYING DOCUMENT WAS  
PREPARED AND THE RELATED SURVEY WORK WAS PERFORMED BY ME OR  
UNDER MY DIRECT PERSONAL SUPERVISION AND THAT I AM A DULY  
LICENSED LAND SURVEYOR UNDER THE LAWS OF THE STATE OF IOWA.

*Michael J. Weber* *March 30, 2009*  
MICHAEL J. WEBER (DATE)  
LICENSE NUMBER 15084

MY LICENSE RENEWAL DATE IS DECEMBER 31, 2009

SHEETS COVERED BY THIS SEAL: THIS SHEET

List Corners to be Indexed		
Corner	Sec	Twp Range
NW COR.	18	84N 5E
SW COR.	18	84N 5E



Document 10-1194

Book 2 Page 706 Type 15 001 Pages 1

Date 4/05/2010 Time 10:40 AM

Rec Amt \$9.00

ARLENE SCHAUF, RECORDER/REGISTRAR  
JACKSON COUNTY IOWA

PREPARED BY: MICHAEL J. WEBER, WEBER SURVEYING, LLC, 26789 46TH AVE, BERNARD, IA 52032 (563) 879-4173

## UNITED STATES PUBLIC LAND SURVEY CORNER CERTIFICATE OF

LAND SURVEY MONUMENTS SITUATED IN SECTION 18, TOWNSHIP 84 NORTH, RANGE 5 EAST  
OF THE FIFTH PRINCIPAL MERIDIAN, JACKSON COUNTY, IOWA.

PREVIOUSLY RECORDED BOOK 2 PAGE 668

(book, page, document number, etc.)

(Show reason for preparing this certificate, the evidence and detailed procedures used in establishing the corner positions and nonumentation found or placed.)

Monument Description and Remarks:

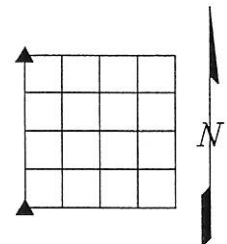
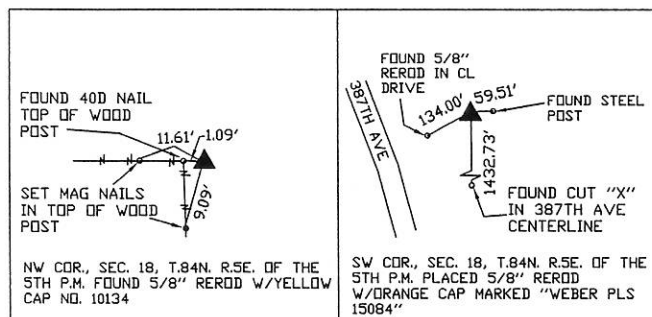
THIS CORNER CERTIFICATE IS BEING RE-RECORDED DUE TO AN ERROR ON THE LOCATION MAP IN BOOK 2 PAGE 668 SHOWING THE NW CORNER AT THE WEST 1/4 CORNER

-NW COR., SEC. 18, T.84N. R.5E. OF THE 5TH P.M. FOUND 5/8" REROD W/YELLOW CAP NO. 10134 AS SHOWN IN CORNER CERTIFICATE BOOK 1 PAGE 430 INDEXED AS THE SE CORNER OF SECTION 12, T84E R4E, AND BOOK 2 PAGE 75 INDEXED AS THE NE CORNER OF SECTION 13, T84E R4E

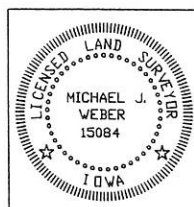
-SW COR., SEC. 18, T.84N. R.5E. OF THE 5TH P.M. PLACED 5/8" REROD W/ORANGE CAP MARKED "WEBER PLS 15084" PREVIOUSLY RECORDED IN CORNER CERTIFICATE BOOK 1 PAGE 323 INDEXED AS THE NE CORNER OF SECTION 24, T84E R4E,

(Show a minimum of three reference ties to durable physical objects, relevant monuments and physical conditions that will enable recovery of the corner.)

### PLAN - VIEW



DWG. NO. REISTROF



I HEREBY CERTIFY THAT THIS LAND SURVEYING DOCUMENT WAS  
PREPARED AND THE RELATED SURVEY WORK WAS PERFORMED BY ME OR  
UNDER MY DIRECT PERSONAL SUPERVISION AND THAT I AM A DULY  
LICENSED LAND SURVEYOR UNDER THE LAWS OF THE STATE OF IOWA.

*Michael J. Weber* *March 29, 2010*  
MICHAEL J. WEBER (DATE)

LICENSE NUMBER 15084

MY LICENSE RENEWAL DATE IS DECEMBER 31, 2011

SHEETS COVERED BY THIS SEAL: THIS SHEET

Corner	Sec	Twp	Range
NW COR.	18	84N	5E
SW COR.	18	84N	5E

Book 2 Page 706