



Document 11-633

Book 2 Page 759 Type 15 001 Pages 1

Date 2/15/2011 Time 8:35 AM

Rec Amt \$9.00

PREPARED BY:
WILLIAM HOLT, PLS
NORWEST SURVEYING SERVICES, INC.
301 E LINCOLNWAY
MORRISON, IL 61270

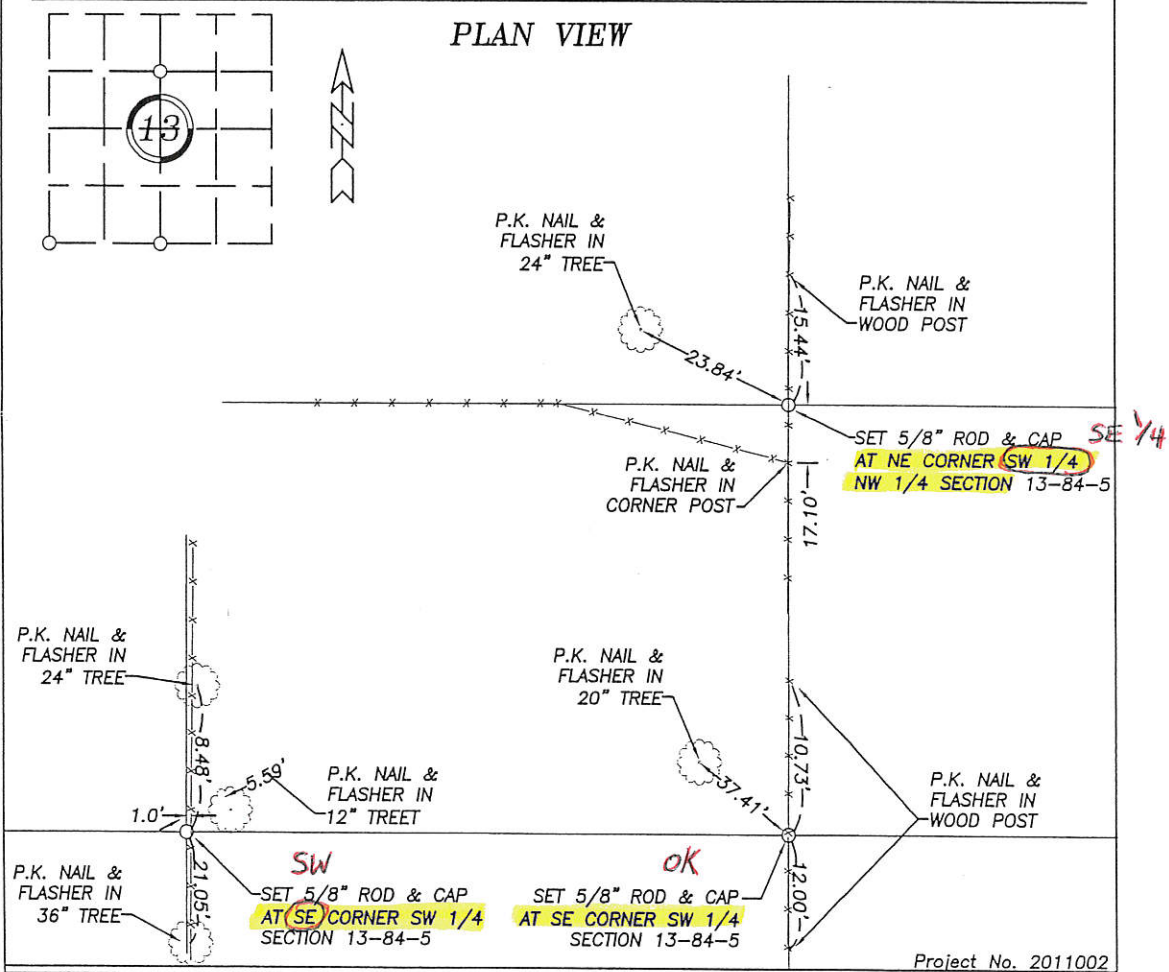
ARLENE SCHAUF, RECORDER/REGISTRAR
JACKSON COUNTY IOWA

UNITED STATES PUBLIC LAND SURVEY CORNER CERTIFICATE OF

Land Survey Monuments in Section 13 in Township 84 North (T84N), Range 5 East (R5E)
of the Fifth Principal Meridian (5th PM), Jackson County, Iowa. (Not Previously Recorded)

Monuments were placed at the Section corners & aliquot corners of Section 13 per the descriptions below.

These corner locations were established at a prorata location using existing monuments, fences and
occupation lines within this and adjoining Sections.



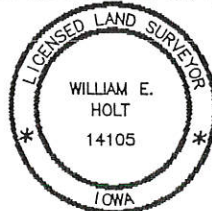
I hereby certify that the survey work was completed
and this land surveying document was prepared by
me or under my direct personal supervision and
that I am a duly registered land surveyor under the
laws of the State of Iowa.

Signature: William E. Holt
William E. Holt

Iowa Registration No. 14105

My Registration Renews on December 31, 2012

Dated this 25th day of January, 2011 C.E.



Corners to be Indexed

Corner	Section	Township	Range
NE CORNER SE 1/4 NW 1/4	13	84N	5E
SE CORNER SW 1/4	13	84N	5E
SW CORNER SW 1/4	13	84N	5E