

UNITED STATES PUBLIC LAND SURVEY CORNER CERTIFICATE

SLSI 9-90

OF

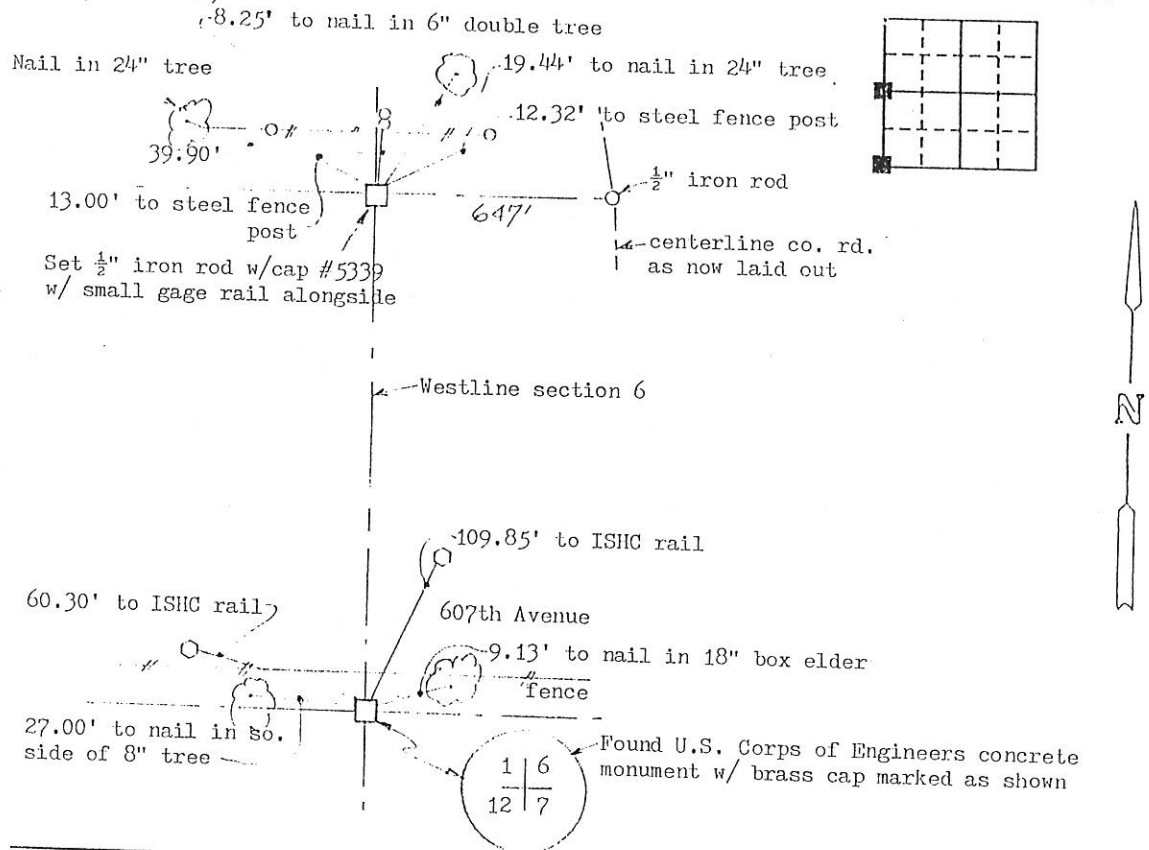
Land Survey Monuments situated in Section 6, Township 84N, Range 7E, of the Fifth Principal Meridian, JACKSON County, Iowa.
Previously recorded in _____ in County Recorder's Office.

(Show reason for preparing this certificate, the evidence and detailed procedures used in establishing the corner positions and monumentation found or placed.)

Monument Description and Remarks: WEST 1/4 CORNER: Set a 1/2" iron rod w/ cap #5339 using information of record. See Notice of Road Abandonment dated 9/4/73.
SW CORNER: Found U.S. Corps of Engineers concrete monument with brass cap marked as shown below, 2' below surface. A 2" iron pipe was found alongside this monument which was placed by the C/E on 4/7/39. C/E ties to ISHC rails checked within 0.3'. A small gage rail was placed (during this survey) alongside said monument to about 1.5' above surface.

PLAN - VIEW

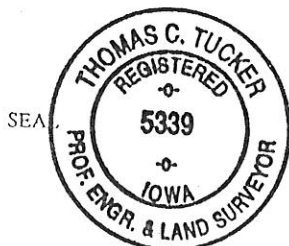
(Show a minimum of three reference ties to durable physical objects, relevant monuments and physical conditions that will enable recovery of the corner.)



I hereby certify that the survey work was completed and this certificate was prepared by me or under my direct personal supervision and that I am a duly registered land surveyor under the laws of the state of Iowa.

Signature: Thomas C. Tucker
Name typed or printed: Thomas C. Tucker, L.S.

Date: 6/8/93 Reg. No. 5339



Corners	Section	Twp	Range
W 1/4 & SW	6	84N	7E

FILE NO. 003492
BOOK 1 PAGE 152

1993 JUN 11 AM 9:27

SHIRLY RITENOUR
JACKSON COUNTY, IOWA
RECORDER

See 5.00