

FILE NO. 04-2649
PAGE 281

04 JUN -9 PM 12:57

PHYLLIS M. GERLACH
JACKSON COUNTY, IOWA
RECORDER
Fee \$11.00

Prepared by Wm. Burger Land Surveyors

510 3rd Street West Court, Worthington, Iowa

Phone 563 - 855 2028

UNITED STATES PUBLIC LAND SURVEY CORNER CERTIFICATE

Land Survey Monuments situated in Section 8, Township 87N, Range 4E, of the Fifth Principal Meridian, Jackson County, Iowa. Previously recorded in N/A in the Office of the County Recorder

Monument Description and Remarks: (No Corner Certificates found at the County Recorder's Office)

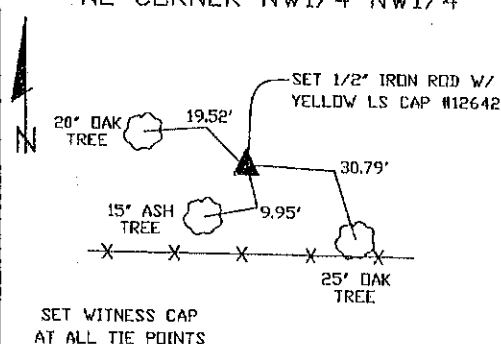
NE CORNER NW1/4 NW1/4 - SET 1/2" IRON ROD W/YELLOW LS CAP #12642 - SET ON LINE AND MIDWAY BETWEEN THE NE1/4 CORNER AND THE NW CORNER OF SAID SECTION 8

SE CORNER NW1/4 NW1/4 - SET 1/2" IRON ROD W/YELLOW LS CAP #12642 - RUN STRAIGHT LINES FROM OPPOSITE 1/4 1/4 CORNERS AND SET AT POINT OF INTERSECTION

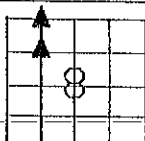
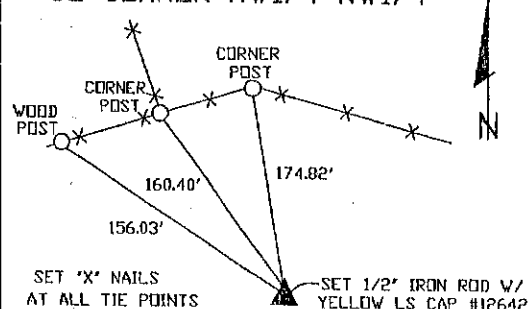
NOTE: METAL DETECTED ALL AREAS BUT NOTHING WAS FOUND; THERE IS NO PREVIOUS RECORD OF ANYTHING BEING SET AT ALL CORNERS

PLAN VIEW

NE CORNER NW1/4 NW1/4



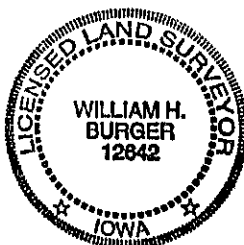
SE CORNER NW1/4 NW1/4



SEC. 8 TWP. 87N RANGE 4E

CORNERS TO BE INDEXED

NE CORNER NW1/4 NW1/4	8	87N	4E
SE CORNER NW1/4 NW1/4	8	87N	4E



I hereby certify that this land surveying document was prepared and related survey work was performed by me or under my direct personal supervision and that I am a duly licensed Land Surveyor under the laws of the State of Iowa.

William H. Burger 6/7/09
William H. Burger Date

License number 12642

My license renewal date is December 31, 2004

Pages or Sheets covered by this seal Sheet 1 of 1



Document 13-4946

Book 3 Page 121 Type 15 001 Pages 1
Date 12/10/2013 Time 11:40 AM
Rec Amt \$7.00

ARLENE SCHAUF, RECORDER/REGISTRAR
JACKSON COUNTY IOWA

PREPARED BY: MICHAEL J. WEBER, WEBER SURVEYING, LLC, 26789 46TH AVE, BERNARD, IA 52032 (563) 879-4173

UNITED STATES PUBLIC LAND SURVEY CORNER CERTIFICATE OF

LAND SURVEY MONUMENTS SITUATED IN SECTION 8, TOWNSHIP 87 NORTH, RANGE 4 EAST
OF THE FIFTH PRINCIPAL MERIDIAN, JACKSON COUNTY, IOWA.
PREVIOUSLY RECORDED NONE UNLESS NOTED BELOW
(book, page, document number, etc)

(Show reason for preparing this certificate, the evidence and detailed procedures used in establishing the corner positions and monumentation found or placed.)

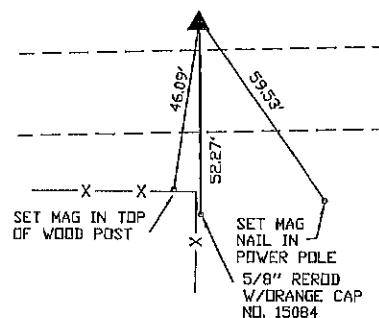
Monument Description and Remarks:

-NW COR, SE-SE, SEC. 8, T.87N. R.4E. OF THE 5TH P.M. PLACED 5/8" STEEL REROD W/ORANGE PLASTIC CAP MARKED 'WEBER PLS 15084', ESTABLISHED CORNER AT THE INTERSECTION OF THE OCCUPATION FENCE RUNNING SOUTH WITH THE CALCULATED 1/4 1/4 SECTION LINE RUNNING EAST AND WEST.

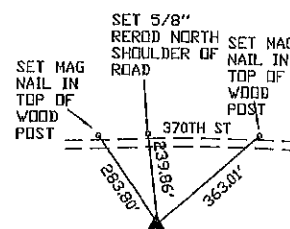
-NE COR, SE-SE, SEC. 8, T.87N. R.4E. OF THE 5TH P.M. PLACED 5/8" STEEL REROD W/ORANGE PLASTIC CAP MARKED 'WEBER PLS 15084', ESTABLISHED CORNER MIDWAY AND ON LINE WITH THE CALCULATED EAST 1/4 CORNER AND THE SE CORNER OF SEC. 8

(Show a minimum of three reference ties to durable physical objects, relevant monuments and physical conditions that will enable recovery of the corner.)

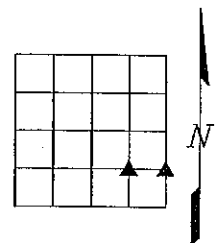
PLAN - VIEW



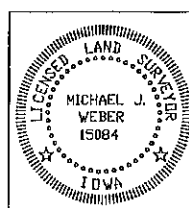
NW COR, SE-SE, SEC. 8, T.87N.
R.4E. OF THE 5TH P.M. PLACED
5/8" STEEL REROD W/ORANGE
PLASTIC CAP MARKED 'WEBER
PLS 15084'.



NE COR, SE-SE, SEC. 8, T.87N.
R.4E. OF THE 5TH P.M. PLACED
5/8" STEEL REROD W/ORANGE
PLASTIC CAP MARKED 'WEBER
PLS 15084'.



DWG. NO. 13\13059



I HEREBY CERTIFY THAT THIS LAND SURVEYING DOCUMENT WAS
PREPARED AND THE RELATED SURVEY WORK WAS PERFORMED BY ME OR
UNDER MY DIRECT PERSONAL SUPERVISION AND THAT I AM A DULY
LICENSED LAND SURVEYOR UNDER THE LAWS OF THE STATE OF IOWA.
Michael J. Weber November 21, 2013
MICHAEL J. WEBER (DATE)
LICENSE NUMBER 15084
MY LICENSE RENEWAL DATE IS DECEMBER 31, 2013
SHEETS COVERED BY THIS SEAL: THIS SHEET

List Corners to be Indexed			
Corner	Sec	Twp	Range
NW COR, SE-SE	8	87N	4E
NE COR, SE-SE	8	87N	4E



Document 17-2143

Book 2017 Page 2143 Type 15 001 Pages 1
Date 6/16/2017 Time 8:34 AM
Rec Amt \$7.00

ARLENE SCHAUF, RECORDER/REGISTRAR
JACKSON COUNTY IOWA

PREPARED BY: MICHAEL J. WEBER, WEBER SURVEYING, LLC, 26789 46TH AVE, BERNARD, IA 52032 (563) 879-4173

UNITED STATES PUBLIC LAND SURVEY CORNER CERTIFICATE OF

LAND SURVEY MONUMENTS SITUATED IN SECTION 8, TOWNSHIP 87 NORTH, RANGE 4 EAST
OF THE FIFTH PRINCIPAL MERIDIAN, JACKSON COUNTY, IOWA.
PREVIOUSLY RECORDED PLAT BOOK 1 PAGE 29

(book, page, document number, etc.)

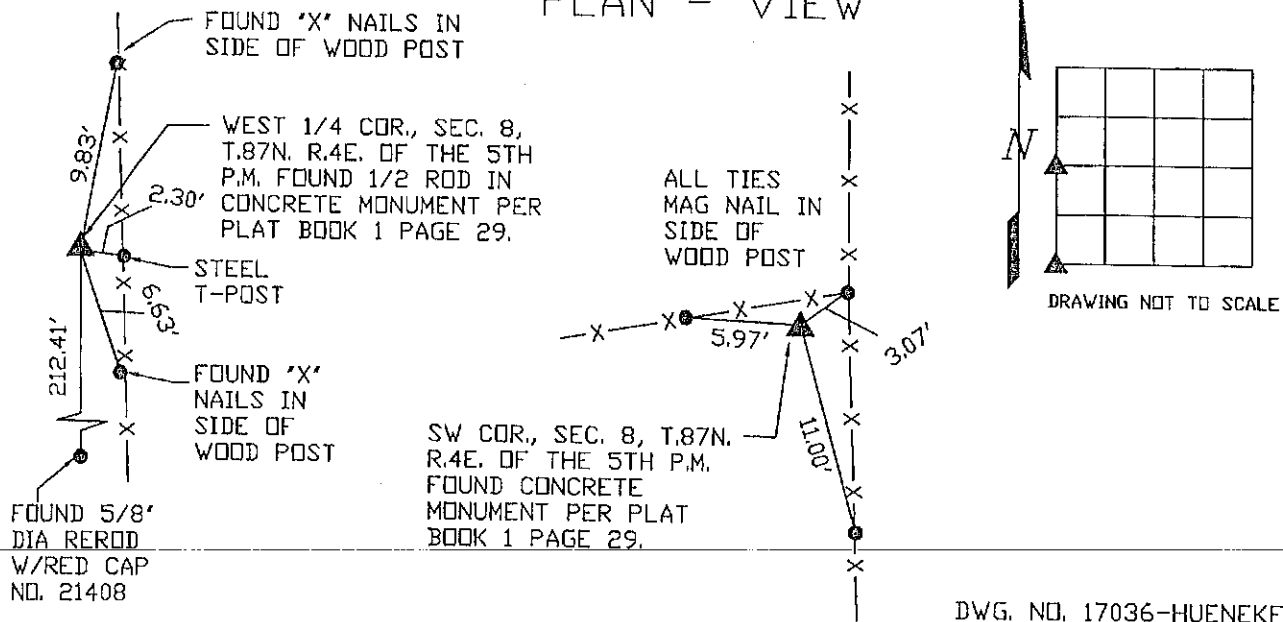
(Show reason for preparing this certificate, the evidence and detailed procedures used in establishing the corner positions and monumentation found or placed.)

Monument Description and Remarks:

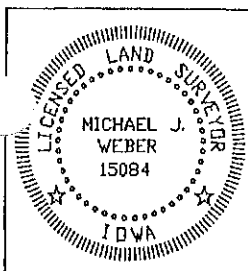
-WEST 1/4 COR., SEC. 8, T.87N. R.4E. OF THE 5TH P.M. FOUND 1/2 ROD IN CONCRETE
MONUMENT PER PLAT BOOK 1 PAGE 29. ESTABLISHED NEW TIES
-SW COR., SEC. 8, T.87N. R.4E. OF THE 5TH P.M. FOUND CONCRETE MONUMENT PER PLAT
BOOK 1 PAGE 29. ESTABLISHED NEW TIES

(Show a minimum of three reference ties to durable physical objects, relevant monuments and physical conditions that will enable recovery of the corner.)

PLAN - VIEW



DWG. NO. 17036-HUENEKE



I HEREBY CERTIFY THAT THIS LAND SURVEYING DOCUMENT WAS
PREPARED AND THE RELATED SURVEY WORK WAS PERFORMED BY ME OR
UNDER MY DIRECT PERSONAL SUPERVISION AND THAT I AM A DULY
LICENSED LAND SURVEYOR UNDER THE LAWS OF THE STATE OF IOWA.
Michael J. Weber June 14, 2017
MICHAEL J. WEBER (DATE)
LICENSE NUMBER 15084

MY LICENSE RENEWAL DATE IS DECEMBER 31, 2017

SHEETS COVERED BY THIS SEAL THIS SHEET

List Corners to be Indexed			
Corner	Sec	Twp	Range
SW COR.	8	87N	4E
WEST 1/4 COR.	8	87N	4E



Document 21-532

Type 15 001 Pages 1
Date 2/03/2021 Time 11:55 AM
Rec Amt \$7.00

ARLENE SCHAUF, RECORDER/REGISTRAR
JACKSON COUNTY IOWA

Prepared by: SCHNEIDER Land Surveying and Planning, Inc. P.O. Box 128 Farley, Iowa 52046 563-744-3631

UNITED STATES PUBLIC LAND SURVEY CORNER CERTIFICATE OF

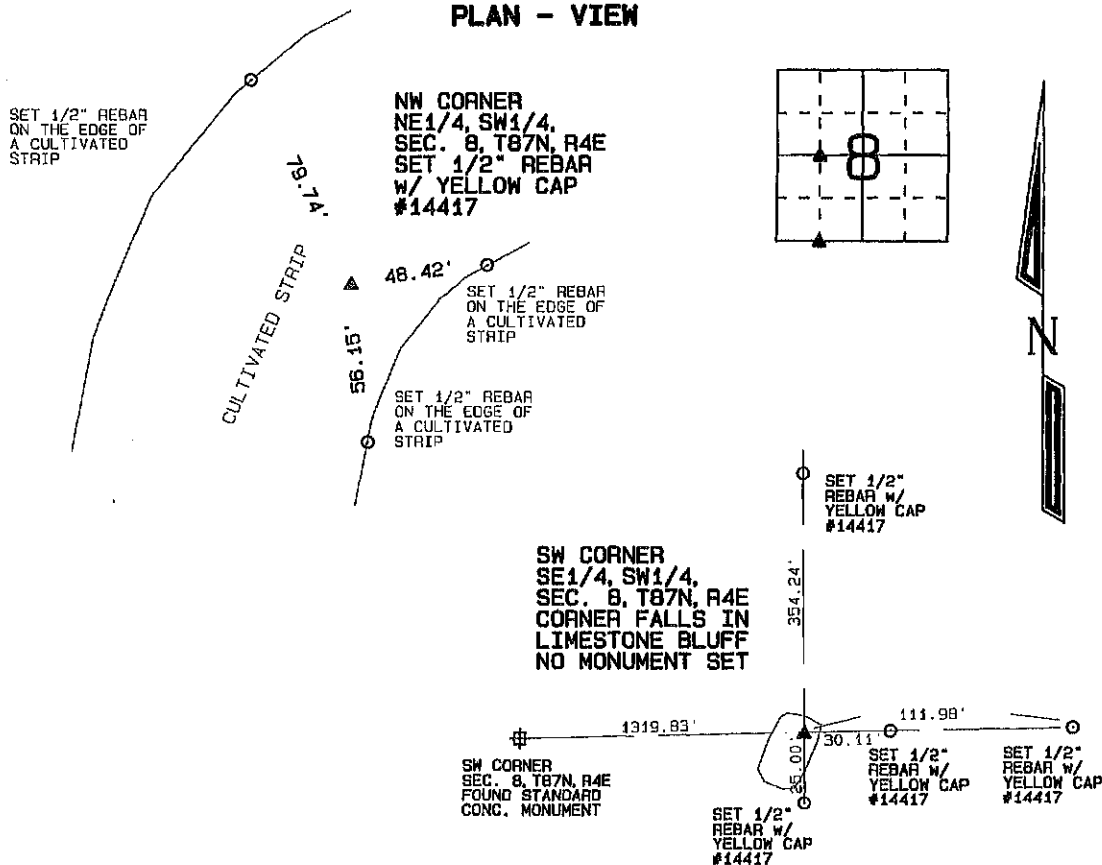
Land Survey Monuments situated in Section 8, Township 87 North, Range 4 East of the Fifth Principal Meridian, Jackson County, Iowa.

Previously recorded (NONE OF RECORD)

BOOK, PAGE / INST. NO. / CABINET, SLIDE

Monument Description and Remarks: THE NW CORNER OF THE NE1/4 OF THE SW1/4 OF SEC. 8, T87N, R4E WAS PLACED ON LINE FROM THE W1/4 CORNER OF SAID SECTION 8 TO THE CENTER OF SAID SECTION 8 AS FENCED AND OCCUPIED AND IN LINE WITH DESCRIPTIONS OF OCCUPIED LAND SOUTH OF THE CORNER. THE SW CORNER OF THE SE1/4 OF THE SW1/4 OF SEC. 8, T87N, R4E WAS PLACED ON LINE BETWEEN THE SW CORNER AND THE S1/4 CORNER OF SAID SECTION 8 AND IN LINE WITH THE DESCRIPTIONS OF THE OCCUPIED LAND LOCATED NORTH OF THE CORNER.

PLAN - VIEW



I hereby certify that this land surveying document was prepared and the related survey work was performed by me or under my direct personal supervision and that I am a duly licensed Land Surveyor under the laws of the State of Iowa.

David P. Schneider P.L.S. P14417 Date: 1/29/2021
My license renewal date is December 31, 2021.

Pages or sheets covered by this seal: THIS SHEET ONLY

List Corners to be Indexed

Corners	Section	Twp	Range
NW CORNER NE1/4, SW1/4,	8	87N	4E
SW CORNER SE1/4, SW1/4,	8	87N	4E

SCHNEIDER
Land Surveying & Planning, Inc.

P.O. Box 128 Farley, Iowa 52046
Ph. #563-744-3631 daves@yousq.net



JOB NO. 2500PS