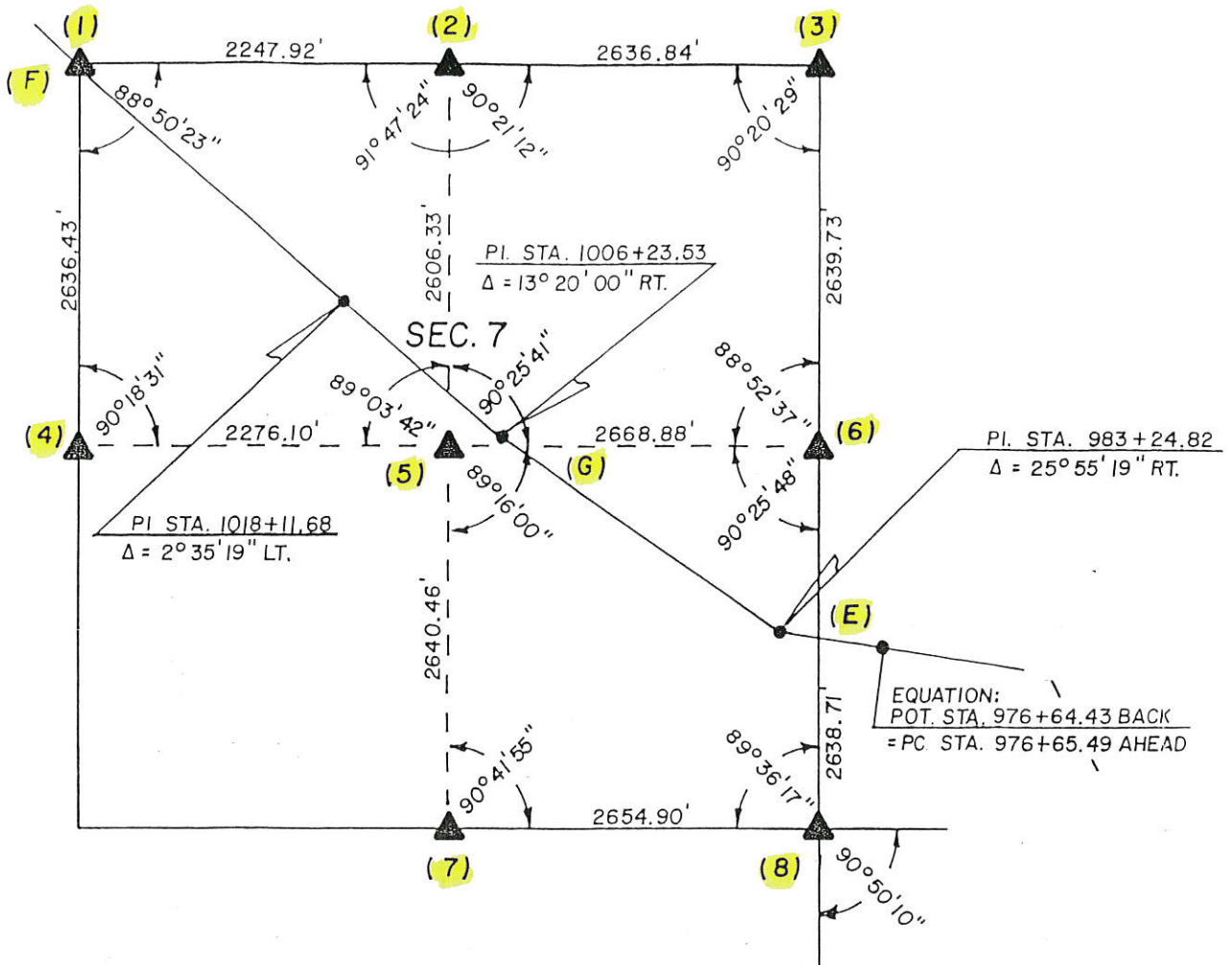


Sec. 7



# UNITED STATES PUBLIC SECTION CORNER CERTIFICATION

LAND CORNER SURVEY  
T-87-N R-4-E

MADE FOR

IOWA DEPARTMENT OF TRANSPORTATION FOR THE  
PURPOSE OF RIGHT OF WAY DESCRIPTIONS ON  
PRIMARY ROAD No. U.S. 52.

MADE BY

LARRY R. McGUIRE R. L. S. No. 9019  
JACKSON COUNTY, IOWA FN-52-1 (16) --21-49

DECEMBER 1989 THRU MAY 1990

ALL DISTANCES WERE CAREFULLY MEASURED AND MAY NOT AGREE  
WITH ROAD SURVEY STATIONING.

FOR COMPLETE INFORMATION ON THIS SURVEY SEE FIELD NOTES  
ON FILE AT THE DISTRICT OFFICE IN CEDAR RAPIDS, IOWA.

I, HEREBY CERTIFY THAT THIS IS A TRUE REPRESENTATION OF A  
SURVEY MADE BY ME ASSISTED BY D. WILBERDING, D. KUNZE  
V. HERNANDEZ, S. LEVY, D. GRANT, D. SANDS, ALL DULY SWORN,  
AND IS CORRECT TO THE BEST OF MY KNOWLEDGE.

SIGNED: 11/30/90

*Larry R. McGuire*  
LARRY R. McGUIRE R.L.S. No. 9019

FILE NO. 1419  
BOOK 1 PAGE 29

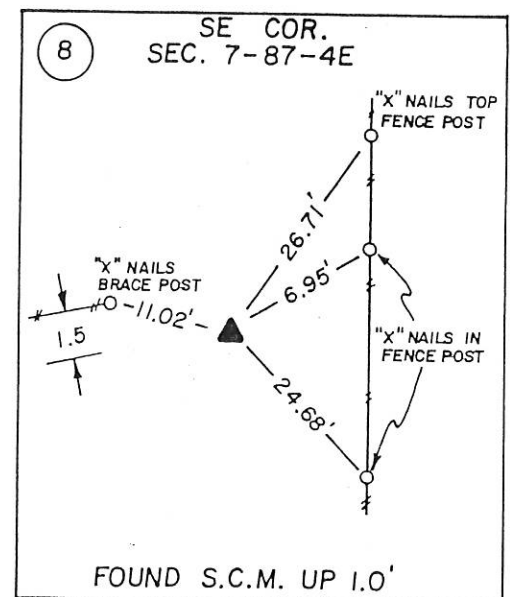
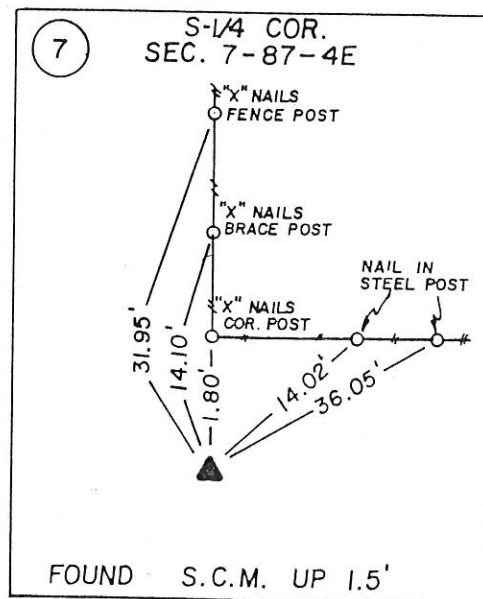
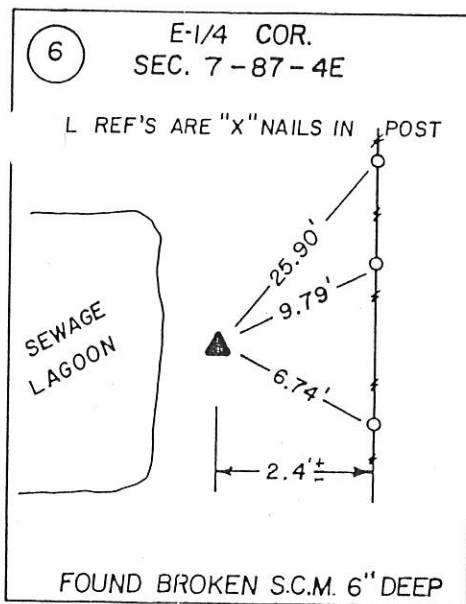
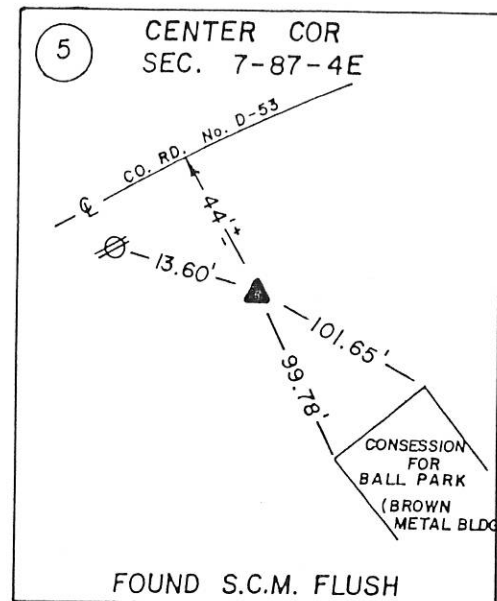
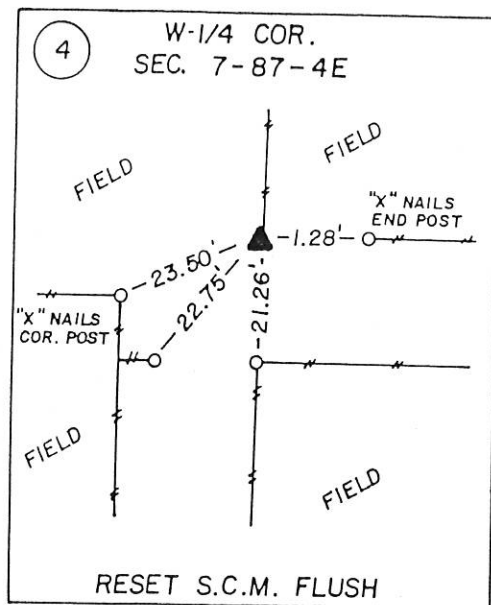
1991 JAN -2 AM 9:55

SHIRLY KITEOUR  
JACKSON COUNTY, IOWA  
RECORDER

Dec 15 90







FILE NO. **03-5811**  
BOOK **2** PAGE **200**

03 OCT -2 AM 10:38

PHYLLIS M. GERLACH  
JACKSON COUNTY, IOWA  
RECORDER

Prepared by: SCHNEIDER Land Surveying and Planning, Inc. P.O. Box 105 Peosta, Iowa 52068 563-556-9055

### UNITED STATES PUBLIC LAND SURVEY CORNER CERTIFICATE OF

Land Survey Monuments situated in Section 7, Township 87 North, Range 4 East of the Fifth Principal Meridian, Jackson County, Iowa.  
Previously recorded (NONE OF RECORD)

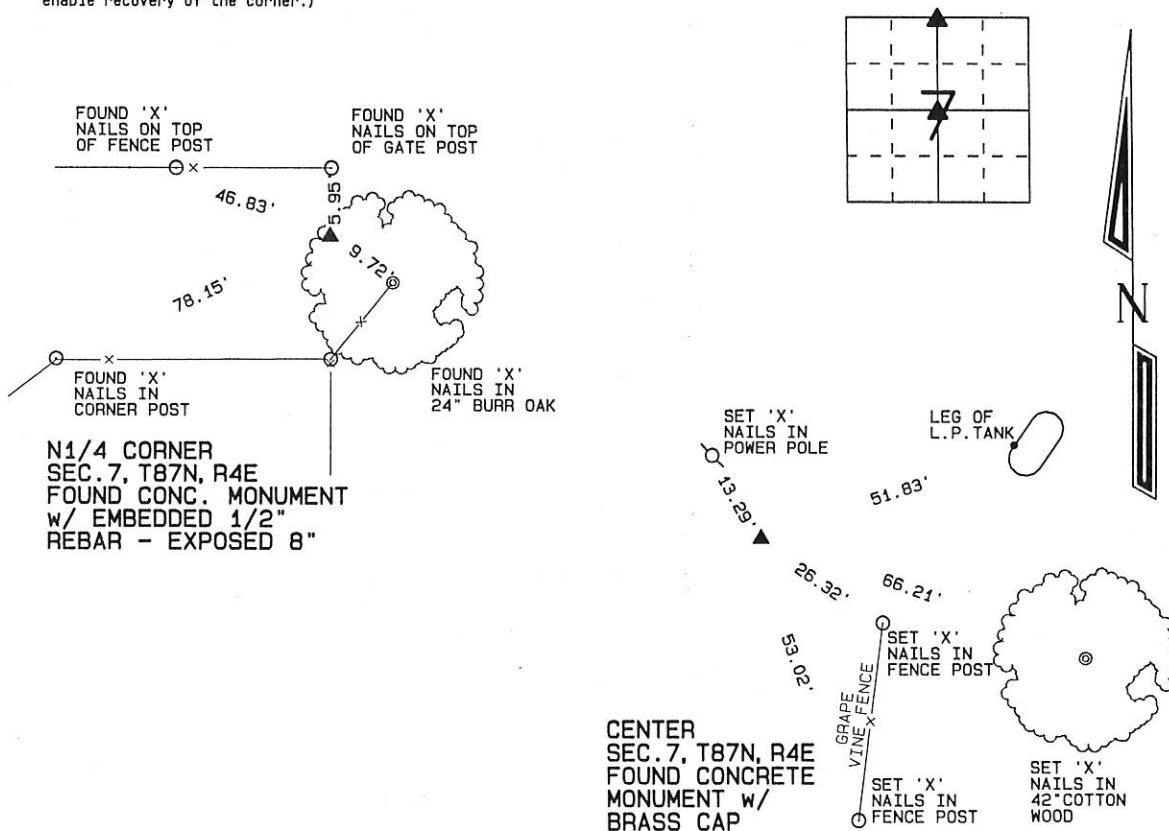
(Show reason for preparing this certificate, the evidence and detailed procedures used in establishing the corner positions and monumentation found or placed.)

Monument Description and Remarks: A STANDARD CONCRETE MONUMENT WAS FOUND AT THE CENTER OF SECTION 7, T87N, R4E OF THE 5th P.M.. THE MONUMENT WAS TIED AND USED AS THE CENTER OF SAID SECTION 7.

A CONCRETE MONUMENT WITH AN EMBEDDED 1/2" REBAR AT THE N1/4 CORNER OF SECTION 7, T87N, R4E AS ILLUSTRATED ON I.D.O.T. SECTION CORNER TIES OBTAINED AT THE COUNTY ENGINEER'S OFFICE. THE MONUMENT WAS TIED AND USED AS THE N1/4 CORNER OF SAID SECTION 7.

### PLAN - VIEW

(Show a minimum of three reference ties to durable physical objects, relevant monuments and physical conditions that will enable recovery of the corner.)



I hereby certify that this land surveying document was prepared and the related survey work was performed by me or under my direct personal supervision and that I am a duly licensed Land Surveyor under the laws of the State of Iowa.

David P. Schneider P.L.S. #14417

Date: 9/29/2003

My license renewal date is December 31, 2003.

Pages or sheets covered by this seal: THIS SHEET ONLY

**SCHNEIDER**  
Land Surveying & Planning, Inc.  
P.O. Box 105 Peosta, Iowa 52068  
Ph. #563-556-9055 Fax#563-556-9054



#### List Corners to be Indexed

Corners	Section	Twp	Range
N1/4	7	87N	4E
CENTER	7	87N	4E

FILE NO. 04-3700  
BOOK 2 PAGE 303

04 AUG 13 AM 8:28

PHYLLIS M. GERLACH  
JACKSON COUNTY, IOWA  
RECORDER *fee 7.-*

Prepared by Wm. Burger Land Surveyors

510 3rd Street West Court, Worthington, Iowa

Phone 563 - 855 2028

### UNITED STATES PUBLIC LAND SURVEY CORNER CERTIFICATE

Land Survey Monuments situated in Section 7, Township 87N, Range 4E, of the Fifth Principal Meridian, Jackson County, Iowa. Previously recorded in N/A in the Office of the County Recorder

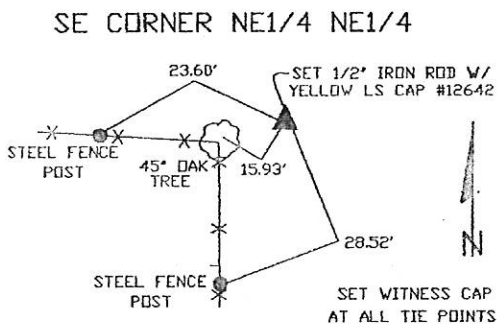
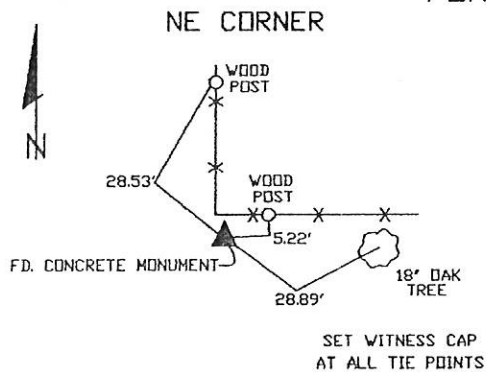
Monument Description and Remarks: (No Corner Certificates found at the County Recorders Office)

NE CORNER - F.D. CONCRETE MONUMENT

SE CORNER NE1/4 NE1/4 - SET 1/2' IRON ROD W/ YELLOW LS CAP #12642 - SET ON LINE AND MIDWAY BETWEEN THE E1/4 CORNER AND THE NE CORNER OF SAID SECTION 7

NOTE: THE NE CORNER WAS PREVIOUSLY RECORDED IN BOOK 1, PAGE 29

#### PLAN VIEW



SEC. 7 TWP. 87N RANGE 4E

#### CORNERS TO BE INDEXED

NE CORNER 7 87N 4E

SE CORNER NE1/4 NE1/4 7 87N 4E



I hereby certify that this land surveying document was prepared and related survey work was performed by me or under my direct personal supervision and that I am a duly licensed Land Surveyor under the laws of the State of Iowa.

*William H. Burger* 4/2/04  
Date

License number 12642

My license renewal date is December 31, 2004

Pages or Sheets covered by this seal Sheet 1 of 1



Document 10-5095

Book 2 Page 738 Type 15 001 Pages 1

Date 12/10/2010 Time 9:37 AM

Rec Amt \$9.00

ARLENE SCHAUF, RECORDER/REGISTRAR  
JACKSON COUNTY IOWA

Prepared by *Wm. Burger LandSurveyor* 510 3rd Street West Court, Worthington, Iowa 52078 Phone 563 - 855 2028

### UNITED STATES PUBLIC LAND SURVEY CORNER CERTIFICATE

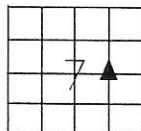
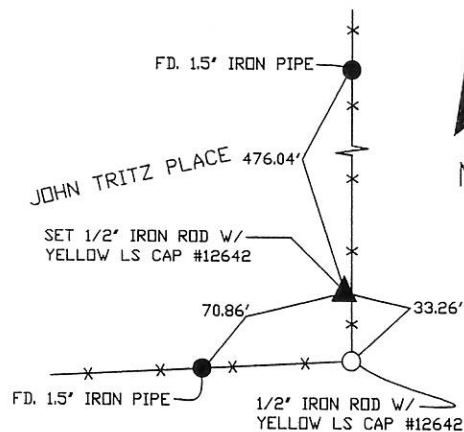
Land Survey Monuments situated in Section 7, Township 87N, Range 4E, of the Fifth Principal Meridian, Jackson County, Iowa. Previously recorded in N/A in the Office of the County Recorder

Monument Description and Remarks: *No Corner Certificates Found at the County Recorders Office*

SW CORNER SE1/4 NE1/4 - SET 1/2" IRON ROD W/ YELLOW LS CAP #12642 - SET ON LINE BETWEEN CENTER OF SECTION AND THE E1/4 CORNER AND INTERSECTED THE EAST LINE OF THE SUBDIVISION OF JOHN TRITZ PLACE

#### PLAN VIEW

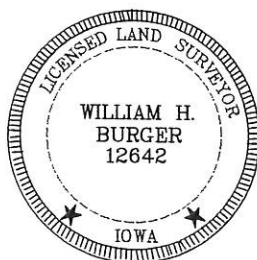
SW CORNER SE1/4 NE1/4



SEC. 7 TWP. 87N RANGE 4E

CORNERS TO BE INDEXED

SW CORNER SE1/4 NE1/4 7 87N 4E



I hereby certify that this land surveying document was prepared and related survey work was performed by me or under my direct personal supervision and that I am a duly licensed Land Surveyor under the laws of the State of Iowa.

*William H. Burger* 12/8/10  
William H. Burger Date

License number 12642

My license renewal date is December 31, 2010

Pages or Sheets covered by this seal: Sheet 1 of 1