

UNITED STATES PUBLIC LAND SURVEY CORNER CERTIFICATE OF

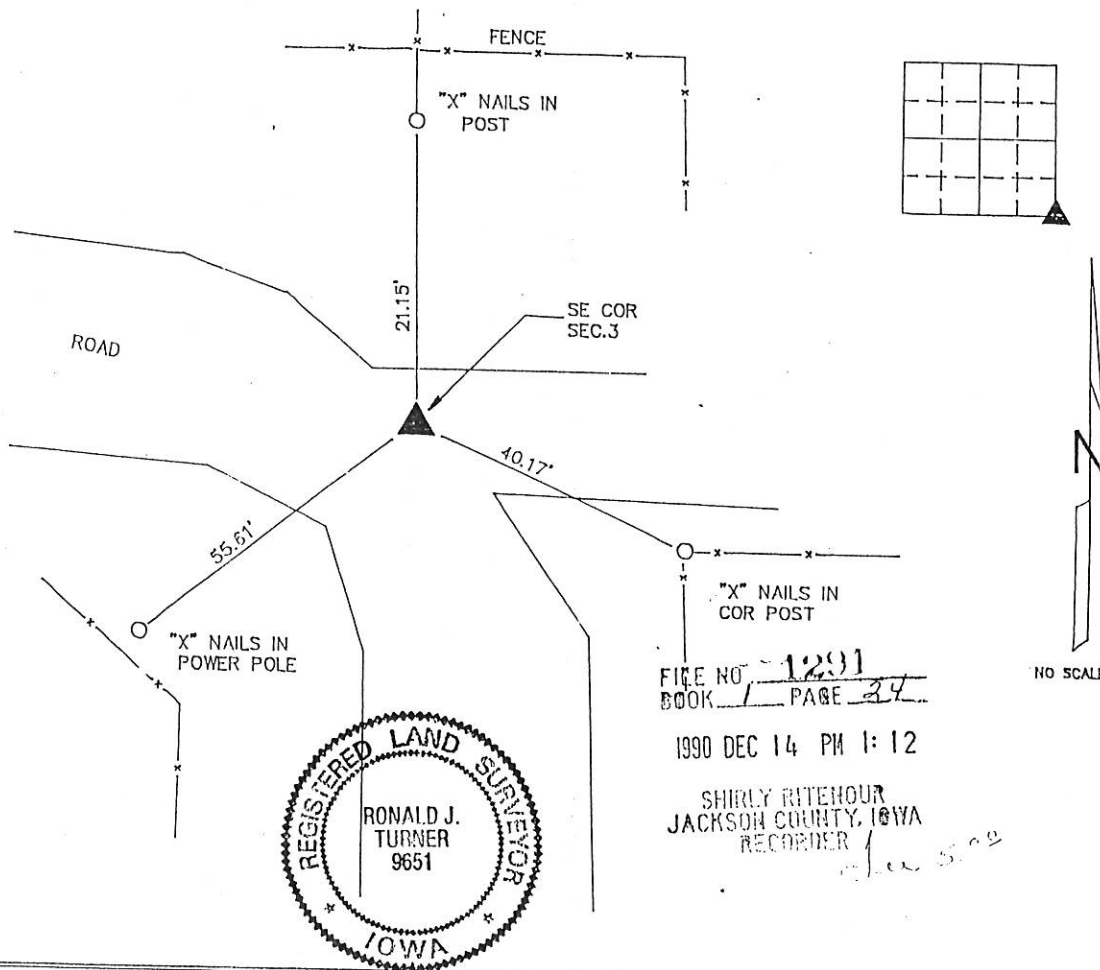
LAND SURVEY MONUMENTS SITUATED IN SECTION 3, TOWNSHIP 87 N, RANGE 4 E
OF THE FIFTH PRINCIPAL MERIDIAN, JACKSON COUNTY, IOWA.
PREVIOUSLY RECORDED IN _____ IN COUNTY RECORDER'S OFFICE.

(Show reason for preparing this certificate, the evidence and detailed procedures used in establishing the corner positions and monumentation found or placed.)

Monument Description and Remarks: FOUND IRON REROD

PLAN - VIEW

(Show a minimum of three reference ties to durable physical objects, relevant monuments and physical conditions that will enable recovery of the corner.)



I HEREBY CERTIFY THAT THE SURVEY WORK WAS COMPLETED AND THIS CERTIFICATE WAS PREPARED BY ME OR UNDER MY DIRECT PERSONAL SUPERVISION AND THAT I AM A DULY REGISTERED LAND SURVEYOR UNDER THE LAWS OF THE STATE OF IOWA.

Ronald J. Turner
NAME: RONALD J. TURNER REG. NO. 9651
DATE: May 24, 1989

LIST CORNERS TO BE INDEXED

CORNERS	SECTION	TWP	RANGE
SE	3	87 N	4 E

	IOW ENGINEERS & SURVEYORS P.C. 3210 ST. JOSEPH DR DUBUQUE, IA 52001 319556-2464 302 S. RIVER PARK DR CUTTENBERG, IA 52052 319292-3823 P.O. BOX 275 GALENA, ILL 61036 815777-0359	MONUMENT RECORD			
		COUNTY: <u>JACKSON</u> TOWNSHIP: <u>TETE DES MORTS</u>		DATE: <u>12-13-90</u> REVISED: _____	FIELD BOOK NO. <u>314</u>



Document 07-1638

Book 2 Page 554 Type 15 001 Pages 1
Date 3/30/2007 Time 10:44 AM
Rec Amt \$7.00

ARLENE SCHAUF, RECORDER
JACKSON COUNTY IOWA

Prepared by: SCHNEIDER Land Surveying and Planning, Inc. P.O. Box 128 Farley, Iowa 52046 563-744-3631

UNITED STATES PUBLIC LAND SURVEY CORNER CERTIFICATE OF

Land Survey Monuments situated in Section 3, Township 87 North, Range 4 East
of the Fifth Principal Meridian, Jackson County, Iowa.
Previously recorded (NONE OF RECORD)

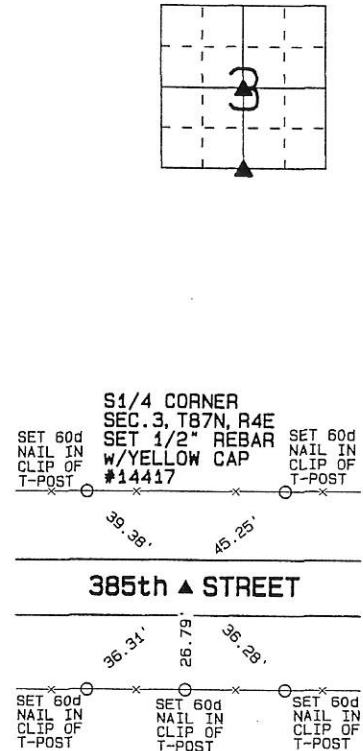
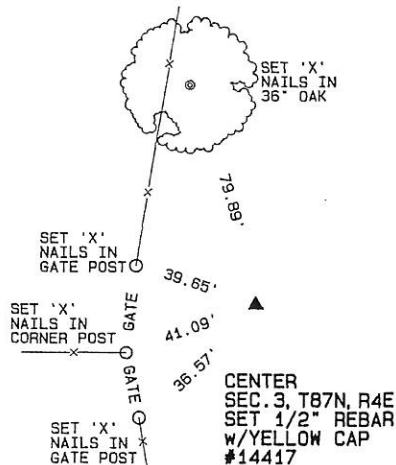
(Show reason for preparing this certificate, the evidence and detailed procedures used in establishing the corner positions and monumentation found or placed.)

Monument Description and Remarks:

THE CENTER OF SECTION 3, T87N, R4E WAS ESTABLISHED USING OCCUPATION EVIDENCE WEST ON THE CORNER, RAILROAD
STATIONING NORTH AND EAST OF THE CORNER AND THE S1/4 CORNER TO INTERSECT FOR THE CENTER OF THE SECTION.
THE S1/4 CORNER OF SECTION 3, T87N, R4E WAS ESTABLISHED AT THE MIDPOINT OF A LINE FROM THE SE CORNER TO THE
SW CORNER OF SAID SECTION 3.

PLAN - VIEW

(Show a minimum of three reference ties to durable physical objects, relevant monuments and physical conditions that will enable recovery of the corner.)



I hereby certify that this land surveying document was prepared and the related survey work was performed by me or under my direct personal supervision and that I am a duly licensed Land Surveyor under the laws of the State of Iowa.

David P. Schneider 3/29/2007
David P. Schneider P.L.S. #14417 Date:
My license renewal date is December 31, 2007.
Pages or sheets covered by this seal: THIS SHEET ONLY

SCHNEIDER
Land Surveying & Planning, Inc.
P.O. Box 128 Farley, Iowa 52046
Ph. #563-744-3631 Fax#563-744-3629



List Corners to be Indexed

Corners	Section	Twp	Range
CENTER	3	87N	4E
S1/4 CORNER	3	87N	4E

Book 2 Page 554

JOB NO. 600PS