

01.5257

FILE NO. 11 PAGE 498

01 DEC 19 AM 10:41

PREPARED BY: EGGER ENGINEERING AND LAND SURVEYING, P.C.  
2395 TECH DRIVE SUITE 8 BETTENDORF, IOWA 52722 319-392-6398

PHYLLIS M. GERLACH  
JACKSON COUNTY, IOWA  
RECORDER #

# UNITED STATES PUBLIC LAND SURVEY CORNER CERTIFICATE *Fee 6.00*

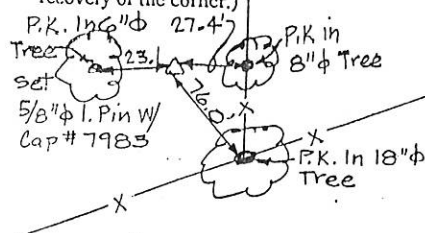
Land Survey Monuments situated in Section 34, Township 87N, Range 4E, of the Fifth Principal Meridian, Jackson County, Iowa, Previously recorded in N/A in County Recorder's Office.

(Show reason for preparing this certificate, the evidence and detailed procedures used in establishing the corner positions and monumentation found or placed.)

Monument Description and Remarks: SW Cor., NE 1/4, SE 1/4 was set by prorating the distance between sec. corners. The SE Cor. was set at a fence corner that proved to be reasonable for distance from the SE Cor. of NW 1/4, SE 1/4. The center of Section was set by intersecting a line from the "Found" E 1/4 corner of Sec. 34 running parallel with the S. line of the N 1/2 of the SE 1/4 with a line from the NW Cor. SW 1/4, SE 1/4 parallel to the E. line SE 1/4, PLAN - VIEW Sec. 34.

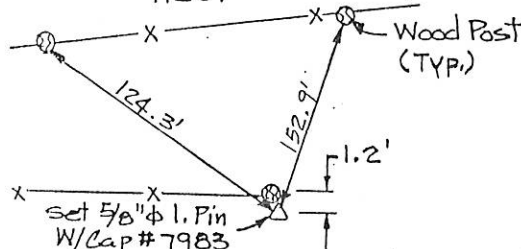
(Show a minimum of three reference ties to durable physical object, relevant monuments and physical conditions that will enable recovery of the corner.)

Note: All Dimensions to Section Corners are Slope Distances

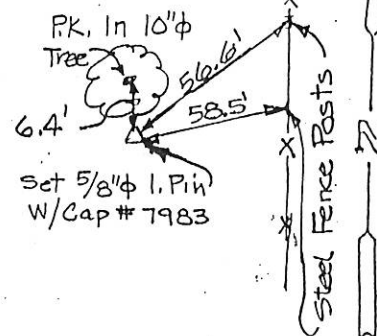
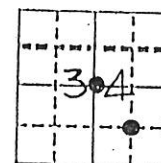


SW Cor., NE 1/4, SE 1/4, Sec. 34

Note: All Wood Posts Have P.K. Ties.



SE Cor. NE 1/4, SE 1/4, Sec. 34

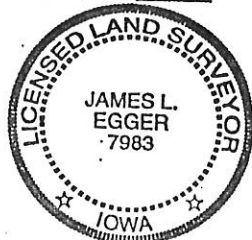


Center Section 34

I hereby certify that the survey work was completed and this certificate was prepared by me or under my direct supervision and that I am a duly registered land surveyor under the laws of the state of Iowa.

Signature: James L. Egger  
James L. Egger L.S.

Date: Dec. 17, 2001 Reg. No. 7983



SEAL

Corners	Section	Twp	Range
Center	34	87N.	4E,
SW, NE 1/4, SE 1/4	34	87N.	4E,
SE, NE 1/4, SE 1/4	34	87N.	4E,

PREPARED BY: EGGER ENGINEERING AND LAND SURVEYING, P.C.  
2395 TECH DRIVE SUITE 2 BETTENDORF, IOWA 52722 563-332-6330

02 FEB 11 PM 2:16

PHILLIS M. GERLACH  
JACKSON COUNTY, IOWA  
RECORDER \$

UNITED STATES PUBLIC LAND SURVEY CORNER CERTIFICATE  
OF

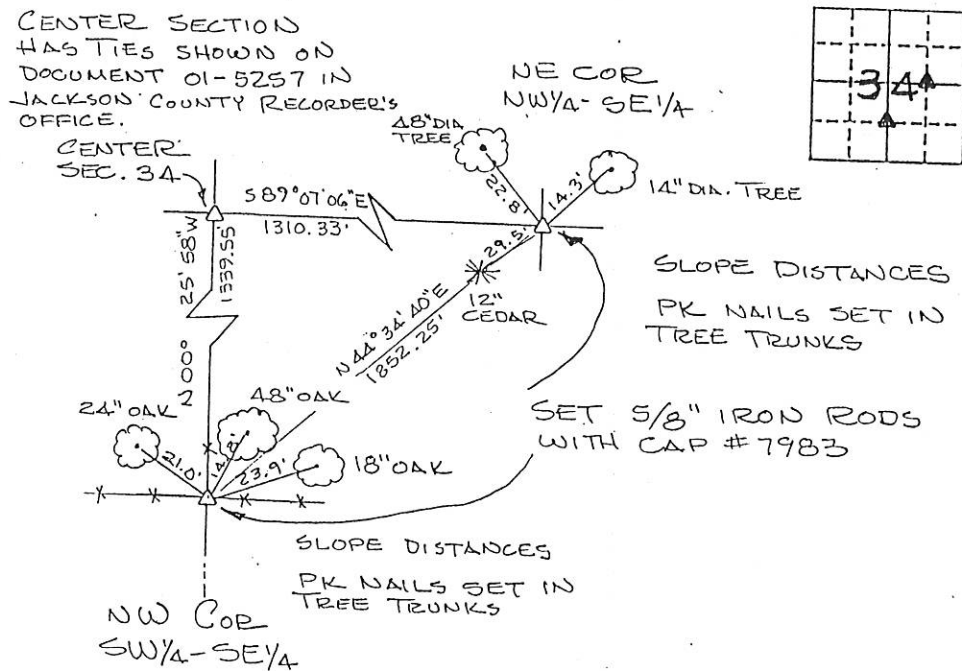
Land Survey Monuments situated in Section 34, Township 87N Range 4E, of the Fifth Principal Meridian, JACKSON County, Iowa. Previously recorded in NEVER RECORDED in County Recorder's Office.

(Show reason for preparing this certificate, the evidence and detailed procedures used in establishing the corner positions and monumentation found or placed.)

Monument Description and Remarks: WE USED THESE CORNERS IN THE SURVEY OF PART OF SECTION 34

PLAN - VIEW

(Show a minimum of three reference ties to durable physical object, relevant monuments and physical conditions that will enable recovery of the corner.)

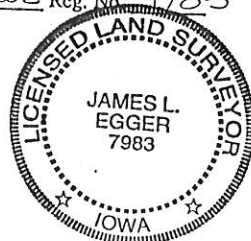


I hereby certify that the survey work was completed and this certificate was prepared by me or under my direct supervision and that I am a duly registered land surveyor under the laws of the state of Iowa.

Signature: James L. Egger  
James L. Egger L.S.

Date: FEB. 6, 2002 Reg. No. 7983

SEAL



Corners	Section	Twp	Range
NE COR NW 1/4 - SE 1/4	34	87N	4E
NW COR SW 1/4 - SE 1/4	34	87N	4E



Document 05-3683

Book 2 Page 387 Type 06 023 Pages 1  
Date 9/08/2005 Time 1:45 PM  
Rec Amt \$7.00

PHYLLIS M. GERLACH, RECORDER  
JACKSON COUNTY IOWA

Prepared by: SCHNEIDER Land Surveying and Planning, Inc. P.O. Box 128 Farley, Iowa 52046 563-744-3631

## UNITED STATES PUBLIC LAND SURVEY CORNER CERTIFICATE OF

Land Survey Monuments situated in Section 34, Township 87 North, Range 4 East of the Fifth Principal Meridian, Jackson County, Iowa.

Previously recorded (NONE OF RECORD)

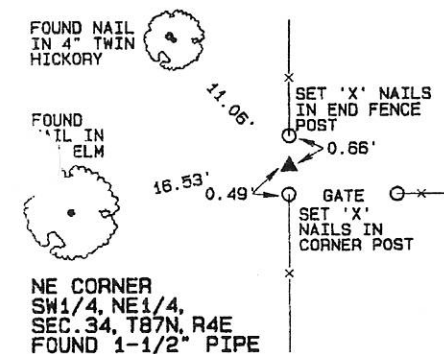
(BOOK, PAGE / INSET, NO. / CABINET, SLIDE)

(Show reason for preparing this certificate, the evidence and detailed procedures used in establishing the corner positions and monumentation found or placed.)

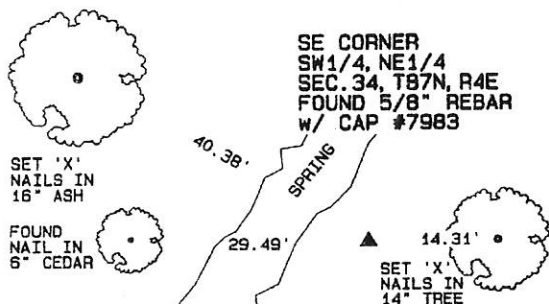
Monument Description and Remarks: A 1-1/2" PIPE WAS FOUND AT THE NE CORNER OF THE SW1/4 OF THE NE1/4 OF SECTION 34, T87N, R4E AS ILLUSTRATED IN A PLAT OF SURVEY FILED IN BOOK 1-C, PAGE 111 IN THE OFFICE OF THE RECORDER OF JACKSON COUNTY, IOWA. A 5/8" REBAR W/ CAP #7983 WAS FOUND AT THE SE CORNER OF THE SW1/4 OF THE NE1/4 OF SECTION 34, T87N, R4E AS ILLUSTRATED IN A SECTION CORNER CERTIFICATE FILED IN S.C.C. BOOK 1, PAGE 558 IN THE OFFICE OF THE RECORDER OF JACKSON COUNTY, IOWA. THE CORNER WAS RETIED BECAUSE ONLY ONE TIE REMAINED. A 1/2" REBAR W/ CAP #5339 WAS FOUND AT THE E1/4 CORNER OF SECTION 34, T87N, R4E AS ILLUSTRATED IN A SECTION CORNER CERTIFICATE FILED IN S.C.C. BOOK 1, PAGE 420 IN THE OFFICE OF THE RECORDER OF JACKSON COUNTY, IOWA. THE CORNER WAS RETIED BECAUSE ONLY ONE TIE REMAINED.

### PLAN - VIEW

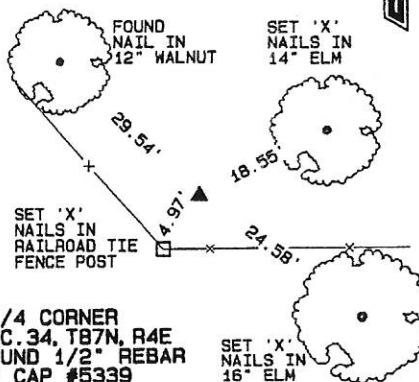
(Show a minimum of three reference ties to durable physical objects, relevant monuments and physical conditions that will enable recovery of the corner.)



NE CORNER  
SW1/4, NE1/4,  
SEC. 34, T87N, R4E  
FOUND 1-1/2" PIPE



SE CORNER  
SW1/4, NE1/4  
SEC. 34, T87N, R4E  
FOUND 5/8" REBAR  
W/ CAP #7983



E1/4 CORNER  
SEC. 34, T87N, R4E  
FOUND 1/2" REBAR  
W/ CAP #5339

I hereby certify that this land surveying document was prepared and the related survey work was performed by me or under my direct personal supervision and that I am a duly licensed Land Surveyor under the laws of the State of Iowa.

David P. Schneider 8/19/2005  
Date: P. Schneider P.L.S. #14417  
License renewal date is December 31, 2005.  
For sheets covered by this seal: THIS SHEET ONLY

**SCHNEIDER**  
Land Surveying & Planning, Inc.

P.O. Box 128 Farley, Iowa 52046  
Ph. #563-744-3631 Fax #563-744-3629



#### List Corners to be Indexed

Corners	Section	Twp	Range
NE CORNER SW1/4, NE1/4	34	87N	4E
SE CORNER SW1/4, NE1/4	34	87N	4E
E1/4	34	87N	4E

Book 2 Page 387 JOB NO. 777



Document 13-3261

Book 3 Page 101 Type 15 001 Pages 1  
Date 7/31/2013 Time 12:26 PM  
Rec Amt \$7.00

ARLENE SCHAUF, RECORDER/REGISTRAR  
JACKSON COUNTY IOWA

Prepared by: SCHNEIDER Land Surveying and Planning, Inc. P.O. Box 128 Farley, Iowa 52046 563-744-3631

## UNITED STATES PUBLIC LAND SURVEY CORNER CERTIFICATE OF

Land Survey Monuments situated in Section 34, Township 87 North, Range 4 East of the Fifth Principal Meridian, Jackson County, Iowa.

Previously recorded NW CORNER, NE1/4, NW1/4 SECTION 3, T86N, R4E - SCC BOOK 1, PAGE 492.

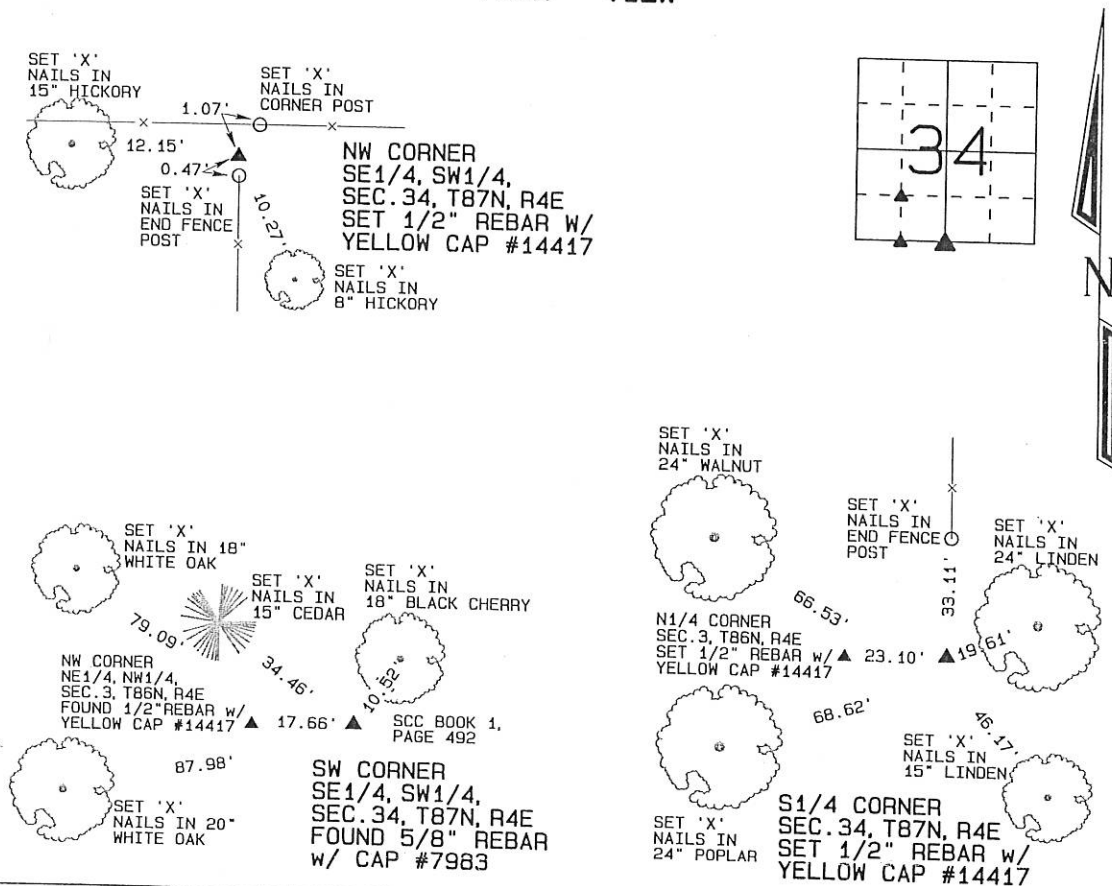
(Show reason for preparing this certificate, the evidence and detailed procedures used in establishing the corner positions and monumentation found or placed.)

Monument Description and Remarks: THE NW CORNER OF THE SE1/4 OF THE SW1/4 OF SECTION 34, T87N, R4E WAS ESTABLISHED USING OCCUPATION EVIDENCE RUNNING TO THE EAST, WEST, AND SOUTH.

A 5/8" REBAR W/ CAP #7983 WAS FOUND AT THE SW CORNER OF THE SE1/4 OF THE SW1/4 OF SECTION 34, T87N, R4E.

(SAID 5/8" REBAR W/ CAP #7983 WAS PREVIOUSLY TIED AS THE NW CORNER OF THE NE1/4 OF THE NW1/4 OF SECTION 3, T86N, R4E IN SCC BOOK 1, PAGE 492). THE S1/4 CORNER OF SECTION 34, T87N, R4E WAS ESTABLISHED USING OCCUPATION EVIDENCE LOCATED NORTH OF THE CORNER.

### PLAN - VIEW



I hereby certify that this land surveying document was prepared and the related survey work was performed by me or under my direct personal supervision and that I am a duly licensed Land Surveyor under the laws of the State of Iowa.

David P. Schneider P.L.S. #14417

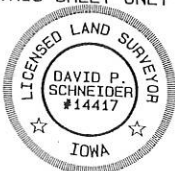
Date: 7/30/2013

My license renewal date is December 31, 2013.

Pages or sheets covered by this seal: THIS SHEET ONLY

**SCHNEIDER**  
Land Surveying & Planning, Inc.

P.O. Box 128 Farley, Iowa 52046  
Ph. #563-744-3631 Fax #563-744-3629



#### List Corners to be Indexed

Corners	Section	Twp	Range
NW CORNER SE1/4, SW1/4	34	87N	4E
SW CORNER SE1/4, SW1/4	34	87N	4E
S1/4 CORNER	34	87N	4E

JOB NO. 1701 SCC



Document 14-3596

Book 3 Page 149 Type 15 001 Pages 1  
Date 10/16/2014 Time 8:43 AM  
Rec Amt \$7.00

ARLENE SCHAUF, RECORDER/REGISTRAR  
JACKSON COUNTY IOWA

Prepared by Wm. Burger Land Surveyor 510 3rd Street West Court, Worthington, Iowa Phone 563 - 855 2028

### UNITED STATES PUBLIC LAND SURVEY CORNER CERTIFICATE

Land Survey Monuments situated in Section 34, Township 87N, Range 4E, of the Fifth Principal Meridian, Jackson County, Iowa. Previously recorded in NA in the Office of the County Recorder

Monument Description and Remarks: No Corner Certificates Found at the County Recorders Office

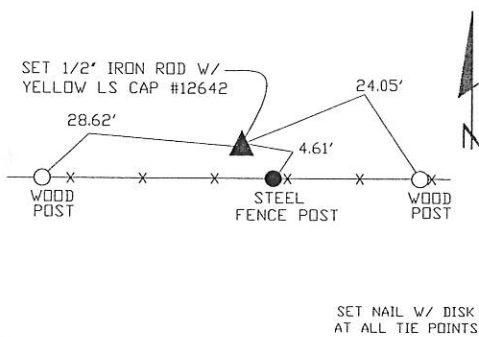
NW CORNER SW1/4 NW1/4 - SET 1/2" IRON ROD WITH YELLOW LS CAP #12642 - SET ON LINE AND MIDWAY BETWEEN THE NW CORNER AND THE W1/4 CORNER

W1/4 CORNER - SET 1/2" IRON ROD WITH YELLOW LS CAP #12642 - USED INFORMATION FROM PLAT FILED IN THE JACKSON COUNTY RECORDER'S OFFICE IN DOCUMENT 13-687.

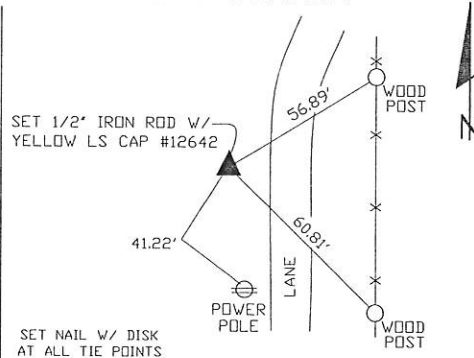
SW CORNER NW1/4 SW1/4 - SET 1/2" IRON ROD WITH YELLOW LS CAP #12642 - SET ON LINE BETWEEN THE SW CORNER AND THE W1/4 CORNER AND USED INFORMATION FROM PLAT FILED IN THE JACKSON COUNTY RECORDER'S OFFICE IN DOCUMENT 13-687 TO SET THIS CORNER

#### PLAN VIEW

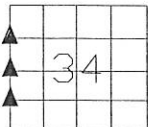
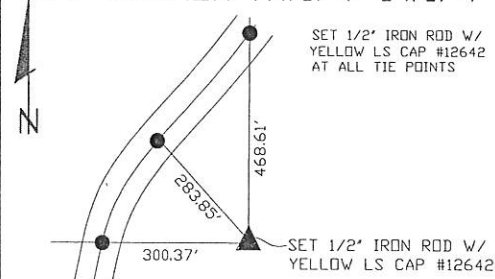
##### NW CORNER SW1/4 NW1/4



##### W1/4 CORNER



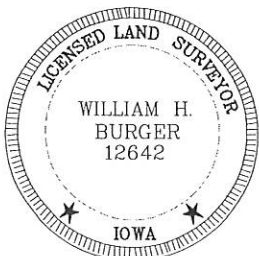
##### SW CORNER NW1/4 SW1/4



SEC. 34 TWP. 87N RANGE 4E

#### CORNERS TO BE INDEXED

NW CORNER SW1/4 NW1/4	34	87N	4E
W1/4 CORNER	34	87N	4E
SW CORNER NW1/4 SW1/4	34	87N	4E



I hereby certify that this land surveying document was prepared and related survey work was performed by me or under my direct personal supervision and that I am a duly licensed Land Surveyor under the laws of the State of Iowa.

*William H. Burger* 9/16/14  
William H. Burger Date

License number 12642

My license renewal date is December 31, 2014

Pages or Sheets covered by this seal: Sheet 1 of 1