

PREPARED BY:
WILLIAM HOLT, PLS
NORWEST SURVEYING SERVICES, INC.
301 E LINCOLNWAY
MORRISON, IL 61270

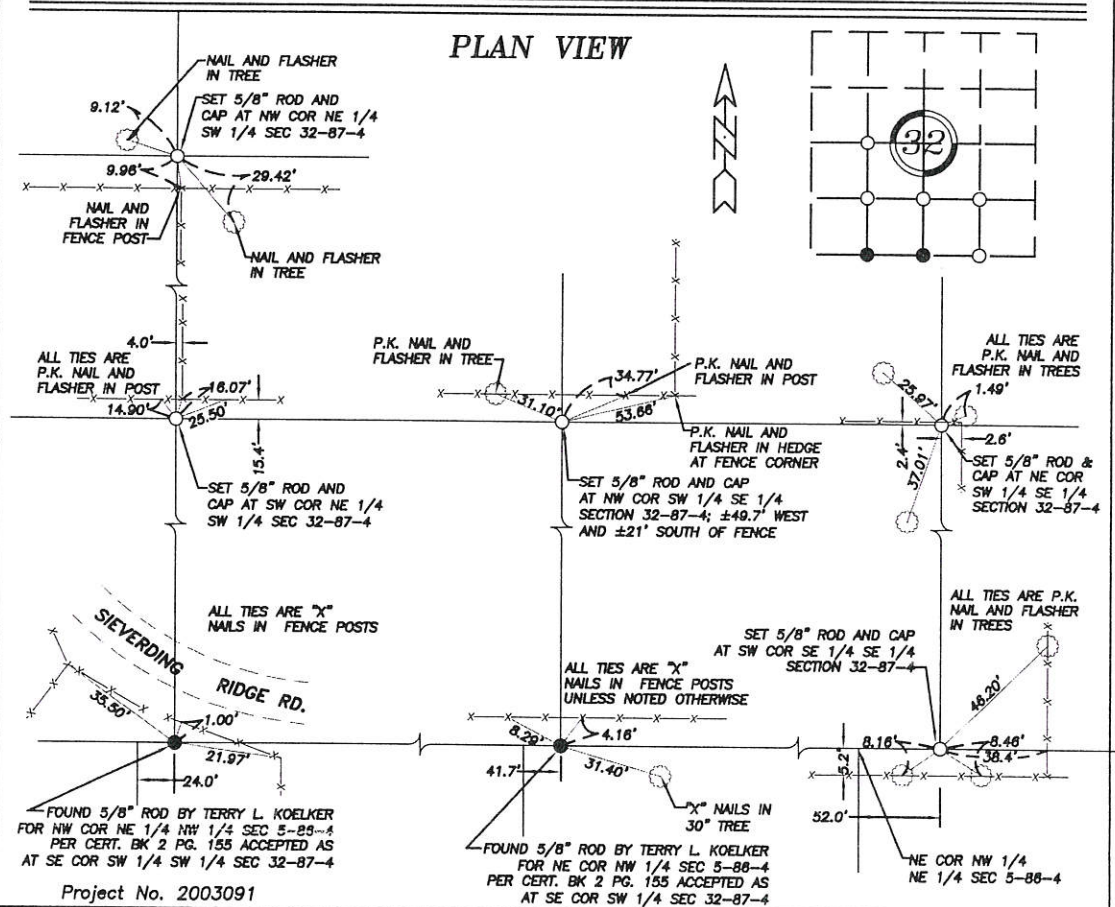
LE NO. 04-2225
BOOK 2 PAGE 266
2004 MAY 18 AM 7:55
PHYLLIS M. GERLACH
JACKSON COUNTY, IOWA
RECORDER Fee 11.00

UNITED STATES PUBLIC LAND SURVEY CORNER CERTIFICATE OF

Land Survey Monuments in Section 32 in Township 87 North (T87N), Range 4 East (R4E)
of the Fifth Principal Meridian (5th PM), Jackson County, Iowa. (Not Previously Recorded)

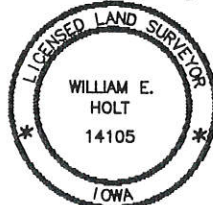
Monuments were placed or found at the locations described below in Section 32

The corner locations were established at a prorata location using existing monuments, fences and occupation lines within this and adjoining Sections, as depicted below.



I hereby certify that the survey work was completed and this land surveying document was prepared by me or under my direct personal supervision and that I am a duly registered land surveyor under the laws of the State of Iowa.

Signature: William E. Holt
William E. Holt
Iowa Registration No. 14105
My Registration Expires on December 31, 2004
Dated this 12th day of May, 2004 C.E.



Corners to be Indexed

Corner	Section	Township	Range
SE COR SW 1/4	32	87N	4E
SW Corner SE 1/4	32	87N	4E
NW Corner NE 1/4	32	87N	4E
SW Corner NE 1/4	32	87N	4E
NW Corner SW 1/4	32	87N	4E
NE Corner SW 1/4	32	87N	4E
SE Corner SW 1/4	32	87N	4E