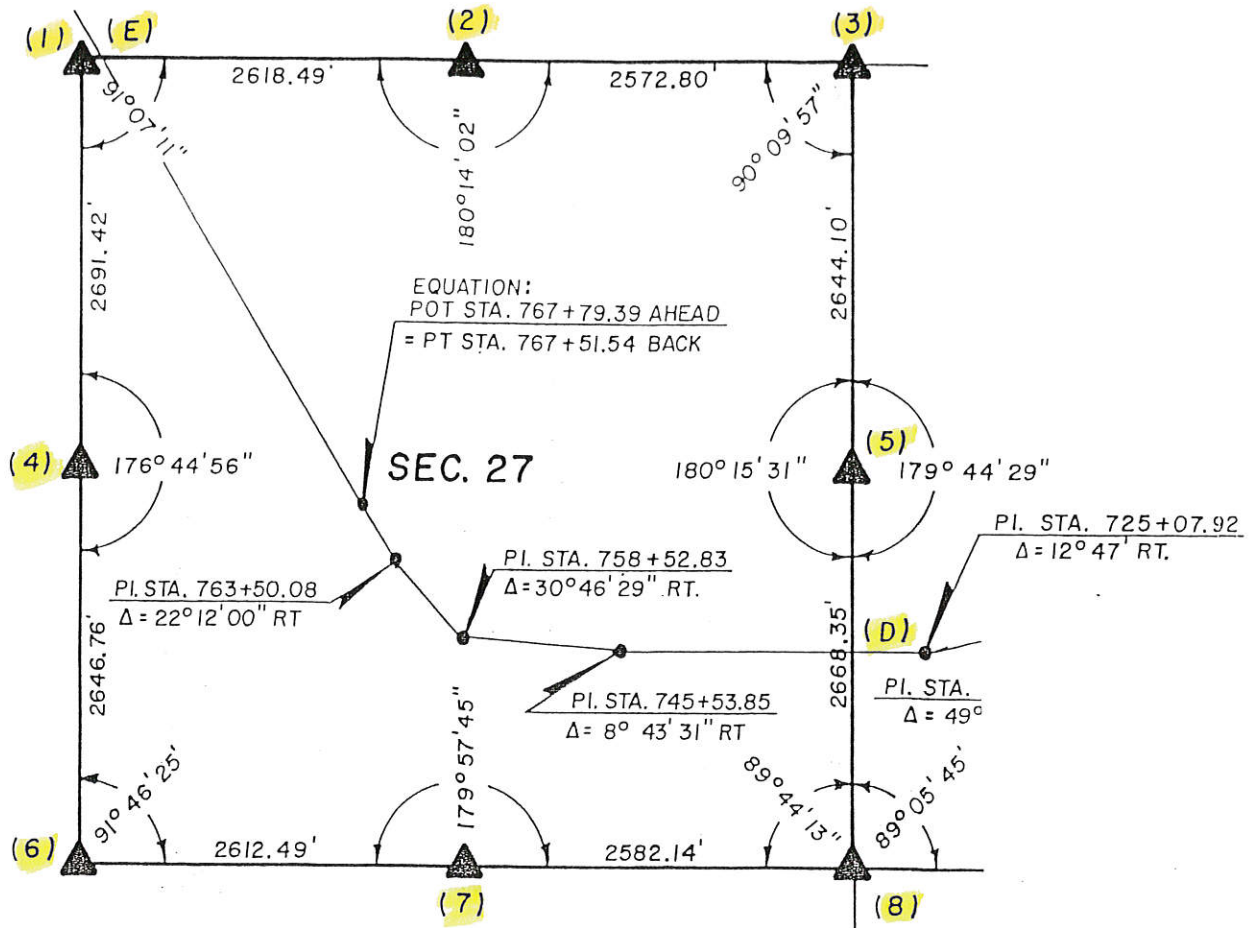


Sec. 27



UNITED STATES PUBLIC SECTION
CORNER CERTIFICATION

AND

LAND CORNER SURVEY
T-87-N R-4-E

MADE FOR

IOWA DEPARTMENT OF TRANSPORTATION FOR THE
PURPOSE OF RIGHT OF WAY DESCRIPTIONS ON
PRIMARY ROAD No. U.S. 52.

MADE BY

LARRY R. McGUIRE R. L. S. No. 9019
JACKSON COUNTY, IOWA FN-52-1(16)--21-49

DECEMBER 1989 THRU MAY 1990

ALL DISTANCES WERE CAREFULLY MEASURED AND MAY NOT AGREE
WITH ROAD SURVEY STATIONING.

FOR COMPLETE INFORMATION ON THIS SURVEY SEE FIELD NOTES
ON FILE AT THE DISTRICT OFFICE IN CEDAR RAPIDS, IOWA.

I, HEREBY CERTIFY THAT THIS IS A TRUE REPRESENTATION OF A
SURVEY MADE BY ME ASSISTED BY D. WILBERDING, D. KUNZE
V. HERNANDEZ, S. LEVY, D. GRANT, D. SANDS, ALL DULY SWORN,
AND IS CORRECT TO THE BEST OF MY KNOWLEDGE.

SIGNED: 11/30/90 *Larry R. McGuire*
LARRY R. McGUIRE R.L.S. No. 9019

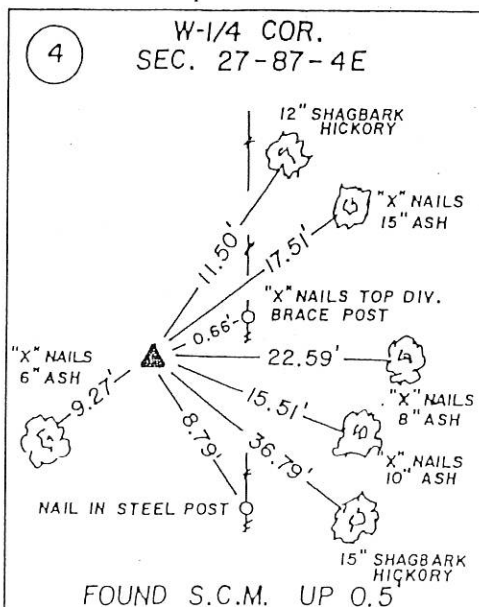
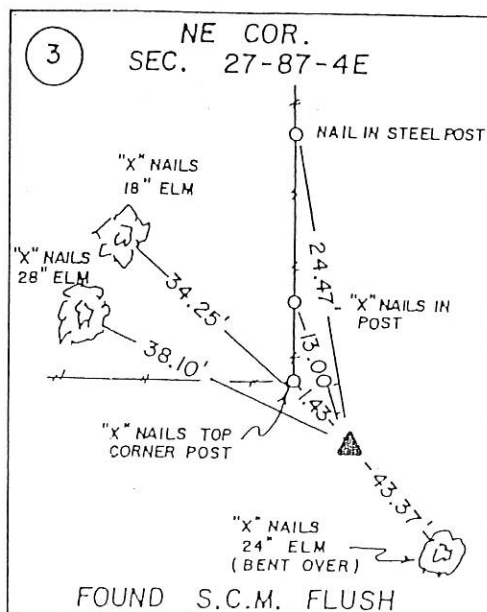
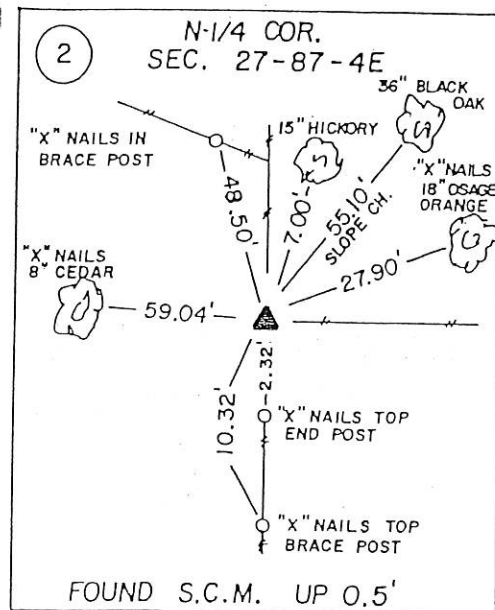
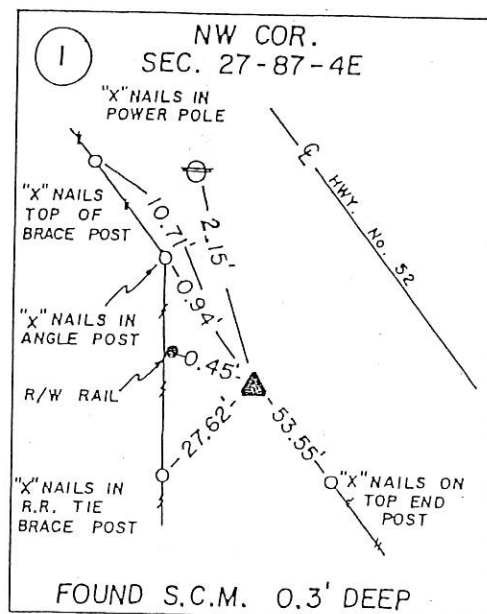
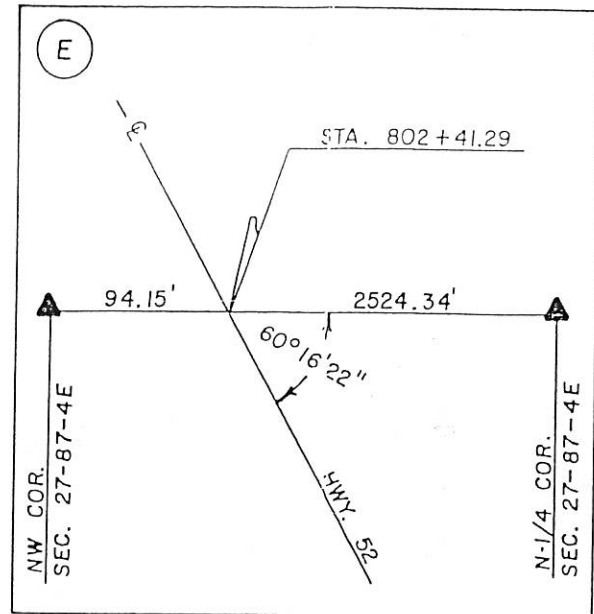
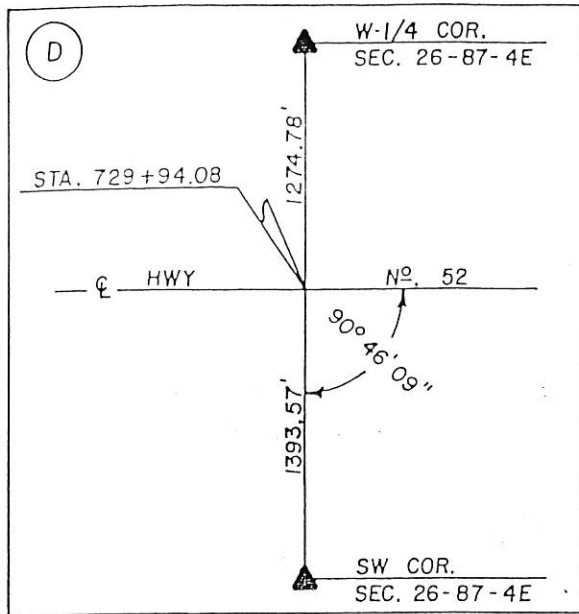
FILE NO. 1418
BOOK 1 PAGE 28

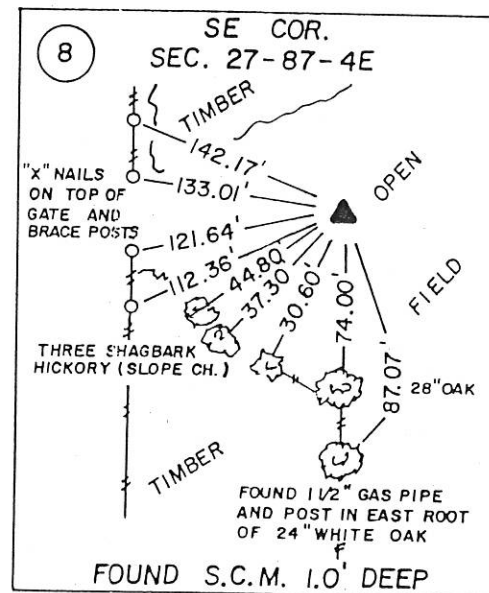
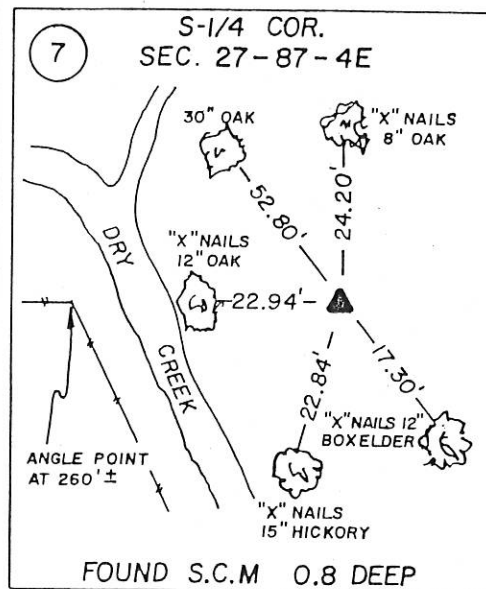
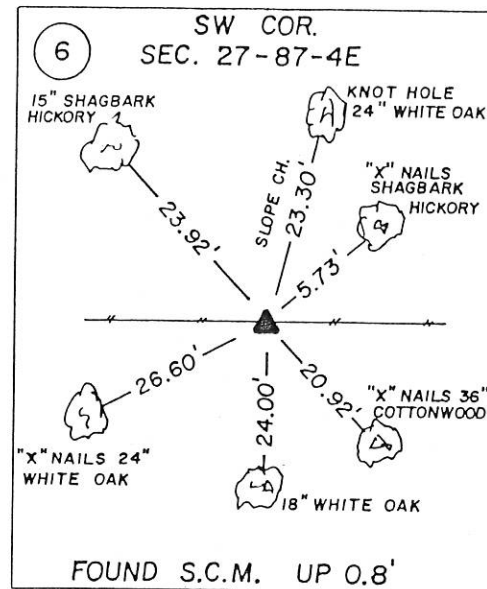
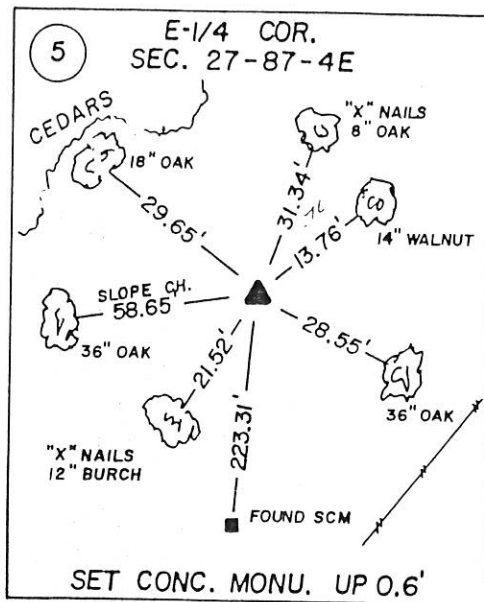
1991 JAN -2 AM 9:55

SHIRLY RITENOUR
JACKSON COUNTY, IOWA
RECORDED

Jan 20 1991









Document 06-3107

Book 2 Page 469 Type 15 001 Pages 1

Date 8/09/2006 Time 12:05 PM

Rec Amt \$7.00

ARLENE SCHAUF, RECORDER
JACKSON COUNTY IOWA

Prepared by Wm. Burger LandSurveyors 510 3rd Street West Court, Worthington, Iowa Phone 563 - 855 2028

UNITED STATES PUBLIC LAND SURVEY CORNER CERTIFICATE

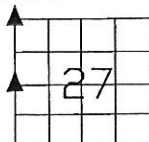
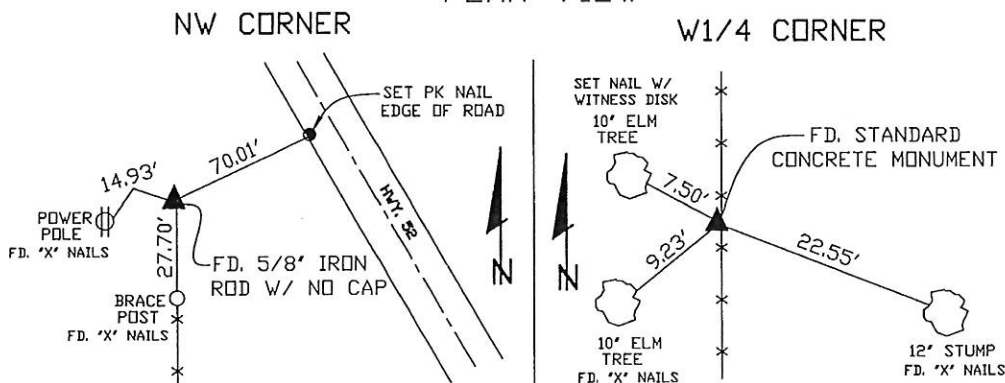
Land Survey Monuments situated in Section 27, Township 87N, Range 4E, of the Fifth Principal Meridian, Jackson County, Iowa. Previously recorded in N/A in the Office of the County Recorder

Monument Description and Remarks: (No Corner Certificates found at the County Recorders Office)

NW CORNER - FOUND 5/8" IRON ROD WITH NO CAP

W1/4 CORNER - FOUND STANDARD CONCRETE MONUMENT

PLAN VIEW



SEC. 27 TWP. 87N RANGE 4E

CORNERS TO BE INDEXED

CORNER	27	87N	4E
NW CORNER			
W1/4 CORNER			



I hereby certify that this land surveying document was prepared and related survey work was performed by me or under my direct personal supervision and that I am a duly licensed Land Surveyor under the laws of the State of Iowa.

William H. Burger 7/5/06
William H. Burger Date

License number 12642

My license renewal date is December 31, 2006

Pages or Sheets covered by this seal: Sheet 1 of 1



Document 07-2409

Book 2 Page 564 Type 15 001 Pages 1

Date 5/21/2007 Time 2:32 PM

Rec Amt \$7.00

ARLENE SCHAUF, RECORDER
JACKSON COUNTY IOWA

Prepare's Name: Buesing & Associates

Address: 1212 Locust St. Dubuque, IA

Telephone: (563) 556-4389

SLSI 9-94

UNITED STATES PUBLIC LAND SURVEY CORNER CERTIFICATE

OF

Land Survey Monuments situated in Section 27, Township 87N, Range 4E, of the Fifth Principal Meridian, JACKSON County, Iowa.
Previously recorded in NO PREVIOUS RECORD FOUND in County Recorder's Office.
(book, page, document number, etc.)

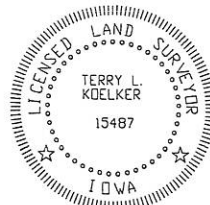
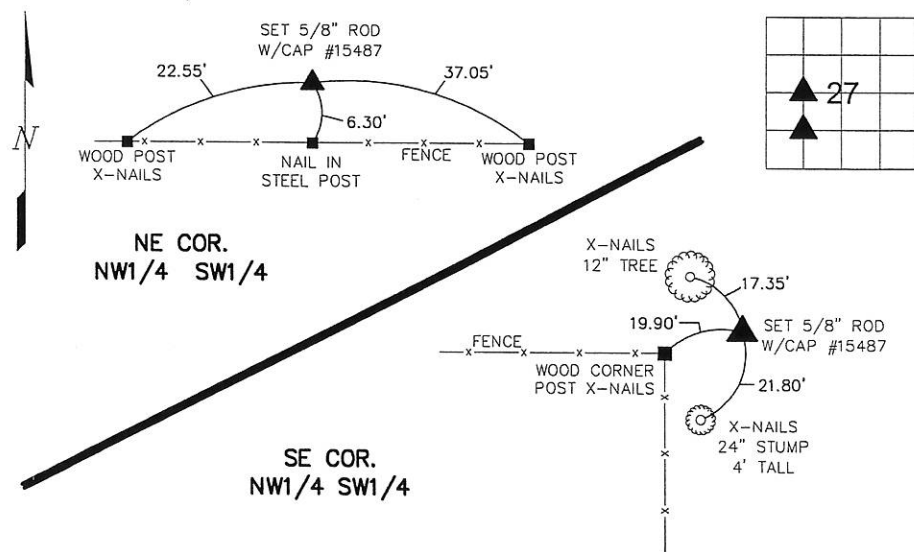
(Show reason for preparing this certificate, the evidence and detailed procedures used in establishing the corner positions and monumentation found or placed.)

Monument Description and Remarks: PLACED 5/8" IRON REROD W/ORANGE PLASTIC CAP MARKED "KOELKER 15487" @ THE NE CORNER OF THE NW1/4 SW1/4. FLUSH. ESTABLISHED CORNER BY USING MID-POINT BETWEEN W1/4 CORNER AND CENTER.

PLACED 5/8" IRON REROD W/ORANGE PLASTIC CAP MARKED "KOELKER 15487" @ THE SE CORNER OF THE NW1/4 SW1/4. FLUSH. ESTABLISHED CORNER BY INTERSECTING 1/4 1/4 SECTION LINES.

PLAN - VIEW

(Show a minimum of three reference ties to durable physical objects, relevant monuments and physical conditions that will enable recovery of the corner.)



I HEREBY CERTIFY THAT THIS LAND SURVEYING DOCUMENT WAS PREPARED AND THE RELATED SURVEY WORK WAS PERFORMED BY ME OR UNDER MY DIRECT PERSONAL SUPERVISION AND THAT I AM A DULY LICENSED LAND SURVEYOR UNDER THE LAWS OF THE STATE OF IOWA.

TERRY L. KOELKER *Terry L. Koelker* 3/27/07
(DATE)

LICENSE NUMBER 15487

MY LICENSE RENEWAL DATE IS DECEMBER 31, 2007

Corners	List Section	Corners to be Indexed	Range
NE COR	27	87N	4E
NW1/4 SW1/4			
SE COR	27	87N	4E
NW1/4 SW1/4			

BUESING
ASSOCIATES INC.
ENGINEERS AND SURVEYORS

1212 LOCUST ST. DUBUQUE, IA
(563) 556-4389

MONUMENT RECORD

COUNTY: JACKSONTOWNSHIP: TETE DES MORTSDATE PLOTTED: 3-26-07
DATE REVISED:FIELD BOOK # 168
PAGE # 21DRAWING
07023-02

Book 2 Page 564



Document 12-3342

Book 3 Page 61 Type 15 001 Pages 1
Date 8/13/2012 Time 8:50 AM
Rec Amt \$7.00

ARLENE SCHAUF, RECORDER/REGISTRAR
JACKSON COUNTY IOWA

PREPARED BY: MICHAEL J. WEBER, WEBER SURVEYING, LLC, 26789 46TH AVE, BERNARD, IA 52032 (563) 879-4173

UNITED STATES PUBLIC LAND SURVEY CORNER CERTIFICATE OF

LAND SURVEY MONUMENTS SITUATED IN SECTION 27, TOWNSHIP 87 NORTH, RANGE 4 EAST
OF THE FIFTH PRINCIPAL MERIDIAN, JACKSON COUNTY, IOWA.
PREVIOUSLY RECORDED NONE UNLESS NOTED BELOW
(book, page, document number, etc.)

(Show reason for preparing this certificate, the evidence and detailed procedures used in establishing the corner positions and monumentation found or placed.)

Monument Description and Remarks:

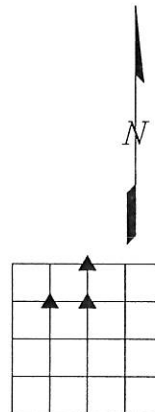
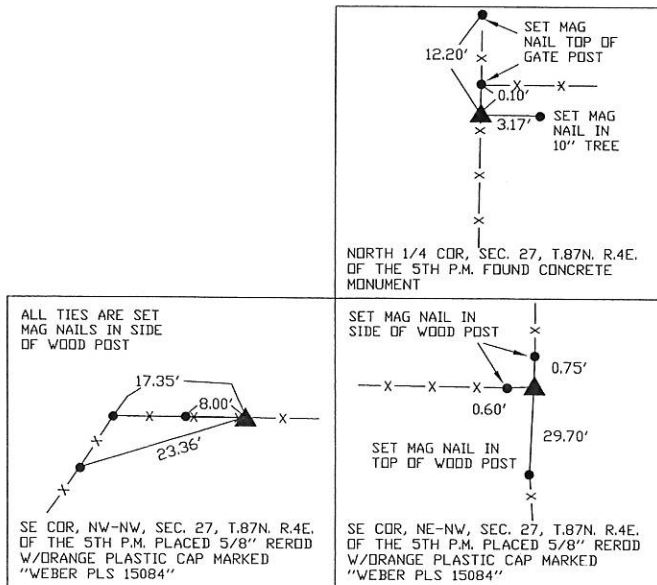
-NORTH 1/4 COR. SEC. 27, T.87N. R.4E. OF THE 5TH P.M. FOUND CONCRETE MONUMENT

-SE COR. NE-NW, SEC. 27, T.87N. R.4E. OF THE 5TH P.M. PLACED 5/8" REROD W/ORANGE PLASTIC CAP MARKED "WEBER PLS 15084". ESTABLISHED CORNER USING OCCUPATION FENCE CORNER RUNNING NORTH AND WEST

-SE COR. NW-NW, SEC. 27, T.87N. R.4E. OF THE 5TH P.M. PLACED 5/8" REROD W/ORANGE PLASTIC CAP MARKED "WEBER PLS 15084". ESTABLISHED CORNER AT THE INTERSECTION OF THE LINE RUNNING BETWEEN THE NE CORNER OF THE NW-SW OF SEC. 27 AND THE NE CORNER OF THE NW-NW OF SEC. 27 WITH THE OCCUPATION FENCELINE RUNNING EAST AND WEST.

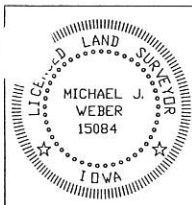
(Show a minimum of three reference ties to durable physical objects, relevant monuments and physical conditions that will enable recovery of the corner.)

PLAN - VIEW



DRAWING NOT TO SCALE

DWG. 2010\TJETJEN\WETZSTEIN



I HEREBY CERTIFY THAT THIS LAND SURVEYING DOCUMENT WAS
PREPARED AND THE RELATED SURVEY WORK WAS PERFORMED BY ME OR
UNDER MY DIRECT PERSONAL SUPERVISION AND THAT I AM A DULY
LICENSED LAND SURVEYOR UNDER THE LAWS OF THE STATE OF IOWA.

Michael J. Weber July 12, 2012
MICHAEL J. WEBER (DATE)
LICENSE NUMBER 15084
MY LICENSE RENEWAL DATE IS DECEMBER 31, 2013

SHEETS COVERED BY THIS SEAL: THIS SHEET

Corner	Sec	Twp	Range
NORTH 1/4 COR.	27	87N	4E
SE COR. NE-NW	27	87N	4E
SE COR. NW-NW	27	87N	4E