

UNITED STATES PUBLIC LAND SURVEY CORNER CERTIFICATE
OF

LAND SURVEY MONUMENTS SITUATED IN SECTION 19, TOWNSHIP 87N, RANGE 5E
OF THE FIFTH PRINCIPAL MERIDIAN, JACKSON COUNTY, IOWA.
PREVIOUSLY RECORDED IN _____ IN COUNTY RECORDER'S OFFICE.

(Show reason for preparing this certificate, the evidence and detailed procedures used in establishing the corner positions and monumentation found or placed.)

Monument Description and Remarks: FOUND U.S.A.C.O.E. CONCRETE MONUMENT No. 12 FIA PA1
ON WESTERLY LINE OF SECTION 19, WHICH WAS SET ON 10/23/42

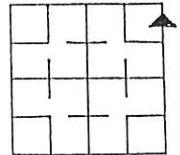
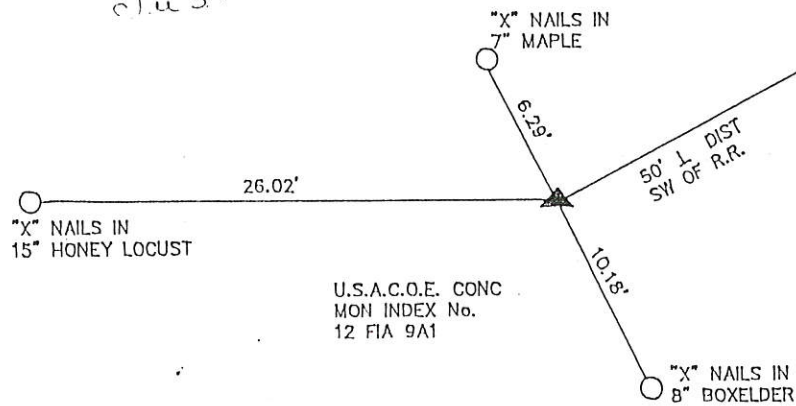
PLAN - VIEW

(Show a minimum of three reference ties to durable physical objects, relevant monuments and physical conditions that will enable recovery of the corner.)

FILE NO. 0217
BOOK 1 PAGE 48

1991 JUL 29 AM 9:52

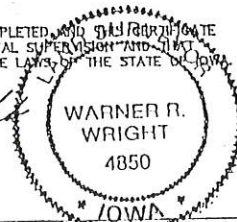
SHIRLEY RITCHIE
JACKSON COUNTY, IOWA
RECORDER
JUL 29 1991



NO SCALE

I HEREBY CERTIFY THAT THE SURVEY WORK WAS COMPLETED, AND THIS CERTIFICATE
WAS PREPARED BY ME OR UNDER MY DIRECT PERSONAL SUPERVISION AND THAT
I AM A DULY REGISTERED LAND SURVEYOR UNDER THE LAWS OF THE STATE OF IOWA.

NAME: WARNER R. WRIGHT REG. NO. 4850
DATE: 7-20-91



LIST CORNERS TO BE INDEXED

CORNERS	SECTION	TWP	RANGE
W/LY	19	87N	5E

BOOK 1 PAGE 48



IHW ENGINEERS &
SURVEYORS P.C.

3210 ST. JOSEPH DR DUBUQUE, IA 52001 319556-2464
302 S. RIVER PARK DR CUTTENBERG, IA 52002 319252-3023
P.O. BOX 275 CALENA, IA 52006 319777-0150

MONUMENT RECORD

COUNTY: JACKSON
TOWNSHIP: TETE DES MORTS

DATE	FIELD	PROJ.	INDEX
4/29/91			

02_4269

FILE NO. _____
BOOK 1 PAGE 580

02 OCT -8 AM 7:59

PHYLLIS M. GERLACH
JACKSON COUNTY, IOWA
RECORDER *See 6.00*

Prepared by: SCHNEIDER Land Surveying and Planning P.O. Box 105 Peosta, Iowa 52068 563-556-9055

UNITED STATES PUBLIC LAND SURVEY CORNER CERTIFICATE OFLand Survey Monuments situated in Section 19, Township 87N North, Range 4 East
of the Fifth Principal Meridian, Jackson County, Iowa.
Previously recorded NONE OF RECORD

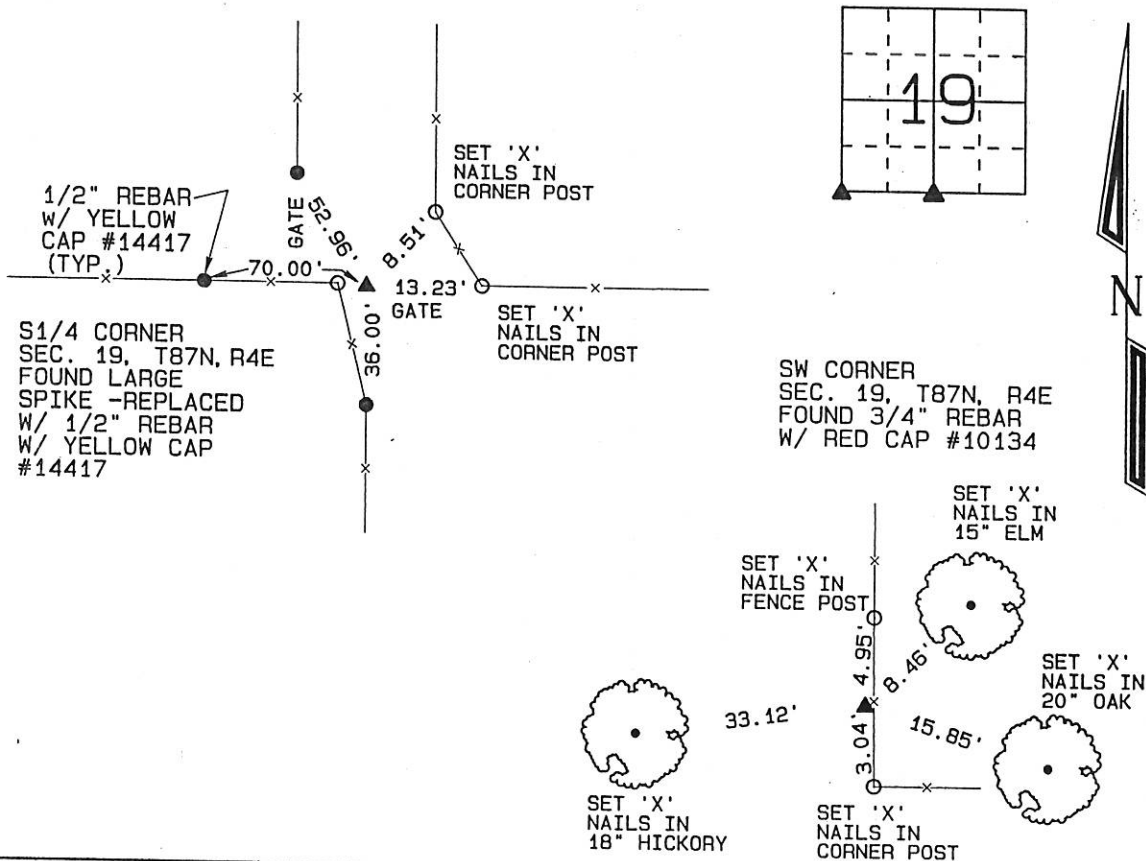
(Show reason for preparing this certificate, the evidence and detailed procedures used in establishing the corner positions and monumentation found or placed.)

Monument Description and Remarks:

THE S1/4 CORNER AND THE SW CORNER OF SEC. 19, T87N, R4E WERE USES AND TIED AS THEY WERE FOUND.

PLAN - VIEW

(Show a minimum of three reference ties to durable physical objects, relevant monuments and physical conditions that will enable recovery of the corner.)



I hereby certify that this land surveying document was prepared and the related survey work was performed by me or under my direct personal supervision and that I am a duly licensed Land Surveyor under the laws of the State of Iowa.

David P. Schneider P.L.S. #14417 Date: 10/4/2002
My license renewal date is December 31, 2003.

Pages or sheets covered by this seal: THIS SHEET ONLY

SCHNEIDER
Land Surveying & PlanningP.O. Box 105 Peosta, Iowa 52068
Ph. #563-556-9055 Fax#563-556-9054**List Corners to be Indexed**

Corners	Section	Twp	Range
SW	19	87N	4E
S1/4	19	87N	4E

JOB NO. 316



Document 08-3856

Book 2 Page 635 Type 15 001 Pages 1
Date 10/14/2008 Time 10:12 AM
Rec Amt \$7.00

ARLENE SCHAUF, RECORDER/REGISTRAR
JACKSON COUNTY IOWA

Prepared by: SCHNEIDER Land Surveying and Planning, Inc. P.O. Box 128 Farley, Iowa 52046 563-744-3631

UNITED STATES PUBLIC LAND SURVEY CORNER CERTIFICATE OF

Land Survey Monuments situated in Section 19, Township 87 North, Range 4 East
of the Fifth Principal Meridian, Jackson County, Iowa.

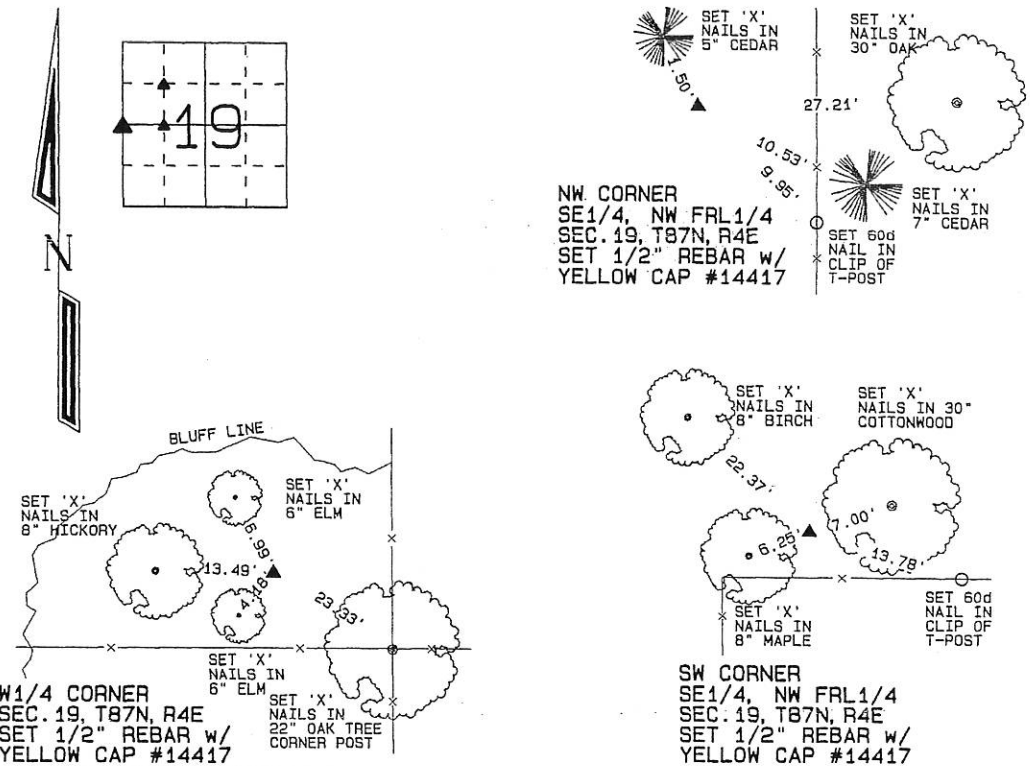
Previously recorded (NONE OF RECORD)
(BOOK, PAGE / INST. NO. / CABINET, SLIDE)

(Show reason for preparing this certificate, the evidence and detailed procedures used in establishing the corner positions and monumentation found or placed.)

Monument Description and Remarks: THE NW CORNER OF THE SE1/4 OF THE NW FRL1/4 OF SECTION 19, T87N, R4E WAS ESTABLISHED AT THE THEORETICAL CENTER OF THE NW FRL1/4. THE W1/4 CORNER OF SECTION 19, T87N, R4E WAS ESTABLISHED AT THE MIDPOINT OF A LINE FROM THE SW CORNER TO THE NW CORNER OF SAID SECTION 19. THE SW CORNER OF THE SE1/4 OF THE NW FRL1/4 OF SECTION 19, T87N, R4E WAS ESTABLISHED ON A LINE FROM THE W1/4 CORNER TO THE CENTER OF SAID SECTION 19 AT A PROPORTIONED DISTANCE BETWEEN THE TWO POINTS.

PLAN - VIEW

(Show a minimum of three reference ties to durable physical objects, relevant monuments and physical conditions that will enable recovery of the corner.)



I hereby certify that this land surveying document was prepared and the related survey work was performed by me or under my direct personal supervision and that I am a duly licensed Land Surveyor under the laws of the State of Iowa.

David P. Schneider P.L.S. #14417 Date: 10/10/2008
My license renewal date is December 31, 2009.

Pages or sheets covered by this seal: THIS SHEET ONLY

SCHNEIDER
Land Surveying & Planning, Inc.
P.O. Box 128 Farley, Iowa 52046
Ph. #563-744-3631 Fax#563-744-3629



List Corners to be Indexed

Corners	Section	Twp	Range
NW CORNER SE1/4, NW FRL1/4	19	87N	4E
W1/4 CORNER	19	87N	4E
SW CORNER SE1/4, NW FRL1/4	19	87N	4E

Book 2 Page 635

JOB NO. 1246



Document 08-3857

Book 2 Page 636 Type 15 001 Pages 1
Date 10/14/2008 Time 10:12 AM
Rec Amt \$7.00

ARLENE SCHAUF, RECORDER/REGISTRAR
JACKSON COUNTY IOWA

Prepared by: SCHNEIDER Land Surveying and Planning, Inc. P.O. Box 128 Farley, Iowa 52046 563-744-3631

UNITED STATES PUBLIC LAND SURVEY CORNER CERTIFICATE OF

Land Survey Monuments situated in Section 19, Township 87 North, Range 4 East of the Fifth Principal Meridian, Jackson County, Iowa.

Previously recorded NW CORNER-SCC BOOK 1, PAGE 392

(BOOK, PAGE / INST. NO. / CABINET, SLIDE)

(Show reason for preparing this certificate, the evidence and detailed procedures used in establishing the corner positions and monumentation found or placed.)

Monument Description and Remarks: THE N1/4 CORNER OF SECTION 19, T87N, R4E WAS ESTABLISHED AT A

PROPORTIONED DISTANCE ALONG THE NORTH LINE OF SAID SECTION 19. THE CENTER OF SECTION 19, T87N, R4E WAS

ESTABLISHED ON A LINE FROM THE W1/4 CORNER TO THE E1/4 CORNER AND USING OCCUPATION EVIDENCE TO THE SOUTH.

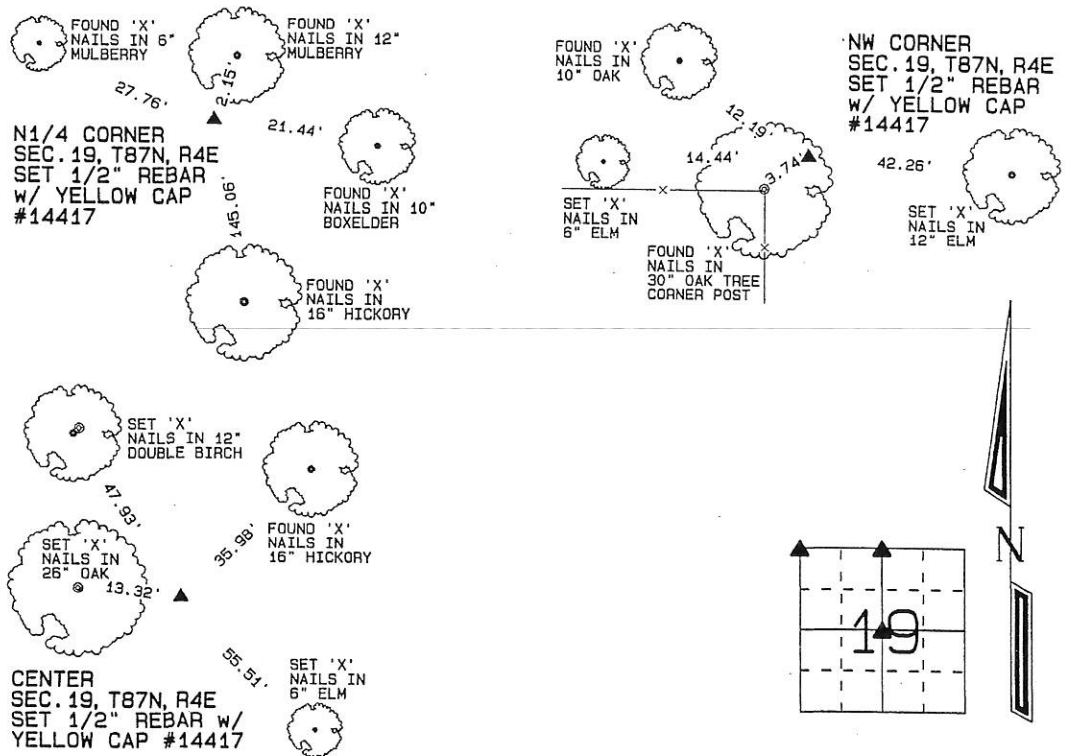
THE NW CORNER OF SECTION 19, T87N, R4E WAS REESTABLISHED AS SHOWN ON A PLAT OF SURVEY OF PARCELS 'C', 'D' AND 'E'

FILED SEPTEMBER 27, 2000 IN BOOK 1-L, PAGE 76. (THE DRAWING OF THE NW CORNER IN SCC BOOK 1, PAGE 392 WAS

ROTATED 90 DEGREES.)

PLAN - VIEW

(Show a minimum of three reference ties to durable physical objects, relevant monuments and physical conditions that will enable recovery of the corner.)



I hereby certify that this land surveying document was prepared and the related survey work was performed by me or under my direct personal supervision and that I am a duly licensed Land Surveyor under the laws of the State of Iowa.

David P. Schneider P.L.S. #14417

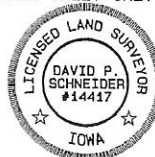
Date: 10/10/2008

My license renewal date is December 31, 2009.

Pages or sheets covered by this seal: THIS SHEET ONLY

SCHNEIDER
Land Surveying & Planning, Inc.

P.O. Box 128 Farley, Iowa 52046
Ph. #563-744-3631 Fax#563-744-3629



List Corners to be Indexed

Corners	Section	Twp	Range
N1/4 CORNER	19	87N	4E
NW CORNER	19	87N	4E
CENTER	19	87N	4E

Book 2 Page 636

JOB NO. 1246