



Document 06-538

Book 2 Page 414 Type 06 023 Pages 1
Date 2/10/2006 Time 2:13 PM
Rec Amt \$7.00

PHYLLIS M. GERLACH, RECORDER
JACKSON COUNTY IOWA

Prepared by Wm. Burger LandSurveyors 510 3rd Street West Court, Worthington, Iowa Phone 563 - 855 2028

UNITED STATES PUBLIC LAND SURVEY CORNER CERTIFICATE

Land Survey Monuments situated in Section 18, Township 87N, Range 4E, of the Fifth Principal Meridian, Jackson County, Iowa. Previously recorded in N/A in the Office of the County Recorder

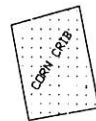
Monument Description and Remarks: (No Corner Certificates found at the County Recorders Office)

NE CORNER NW1/4 SW1/4 - SET 1/2" IRON ROD W/ YELLOW LS CAP #12642 - SET ONLINE
AND AT A PROPORTIONATE DISTANCE BETWEEN THE CENTER OF SECTION AND THE W1/4 CORNER

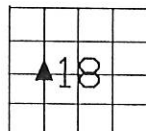
PLAN VIEW

NE CORNER NW1/4 SW1/4

SET NAIL W/ WITNESS
DISK ON TOP OF POST
AT ALL TIE POINTS



SET 1/2" IRON ROD W/
YELLOW LS CAP #12642



SEC. 18 TWP. 87N RANGE 4E

CORNERS TO BE INDEXED

NE CORNER NW1/4 SW1/4 18 87N 4E



I hereby certify that this land surveying document was prepared and related survey work was performed by me or under my direct personal supervision and that I am a duly licensed Land Surveyor under the laws of the State of Iowa.

William H. Burger 1/27/06
William H. Burger Date

License number 12642

My license renewal date is December 31, 2006

Pages or Sheets covered by this seal Sheet 1 of 1



Document 06-539

Book 2 Page 415 Type 06 023 Pages 1
Date 2/10/2006 Time 2:14 PM
Rec Amt \$7.00

PHYLLIS M. GERLACH, RECORDER
JACKSON COUNTY IOWA

Prepared by Wm. Burger Land Surveyors

510 3rd Street West Court, Worthington, Iowa

Phone 563 - 855 2028

UNITED STATES PUBLIC LAND SURVEY CORNER CERTIFICATE

Land Survey Monuments situated in Section 18, Township 87N, Range 4E, of the Fifth Principal Meridian, Jackson County, Iowa. Previously recorded in N/A in the Office of the County Recorder

Monument Description and Remarks: (No Corner Certificates Found at the County Recorders Office)

N1/4 CORNER - FD. STANDARD CONCRETE MONUMENT

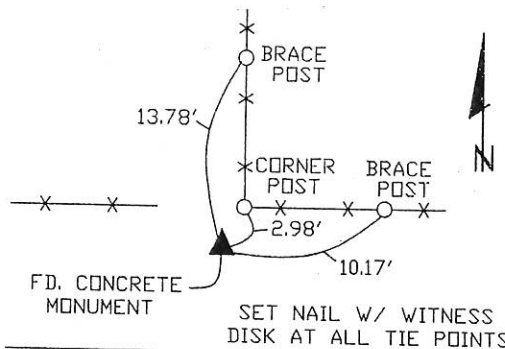
SW CORNER NW1/4 SW1/4 - SET 1/2" IRON ROD W/ YELLOW LS CAP #12642 - SET ONLINE AND MIDWAY BETWEEN THE SW CORNER AND THE W1/4 CORNER

SE CORNER NW1/4 SW1/4 - NOTHING SET - FELL ON TOP OF LARGE TREE LAYING ON THE GROUND - RUN STRAIGHT LINES FROM OPPOSITE 1/4 1/4 CORNERS AND SET AT THE POINT OF INTERSECTION

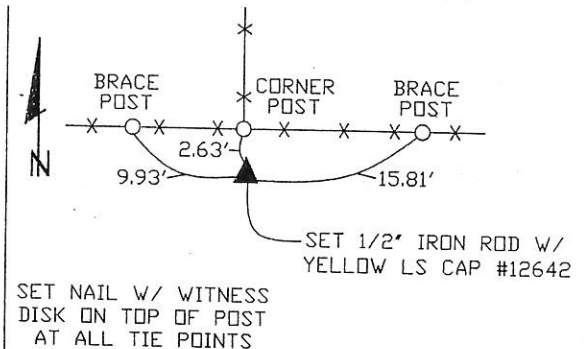
W1/4 CORNER - SET 1/2" IRON ROD W/ YELLOW LS CAP #12642 - SET ONLINE WITH THE SW CORNER AND THE SW CORNER NW1/4 SW1/4 AND SET MIDWAY BETWEEN THE SW CORNER AND THE NW CORNER

PLAN VIEW

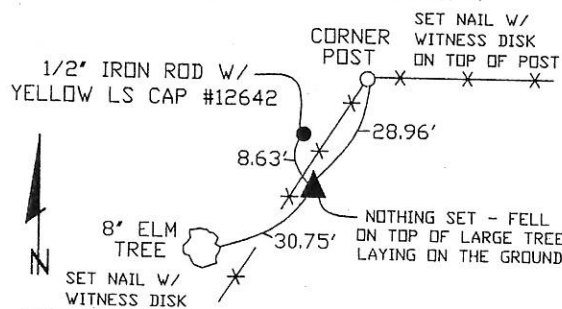
N1/4 CORNER



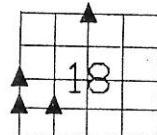
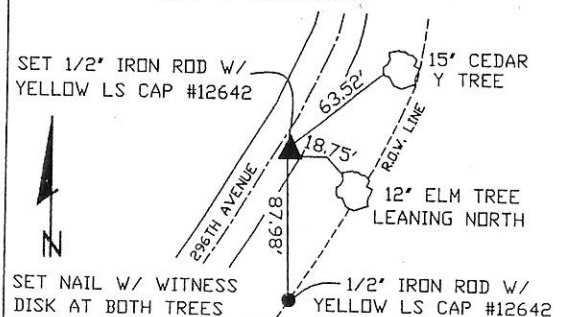
SW CORNER NW1/4 SW1/4



SE CORNER NW1/4 SW1/4



W1/4 CORNER



SEC. 18 TWP. 87N RANGE 4E

CORNERS TO BE INDEXED

N1/4 CORNER	18	87N	4E
SW CORNER NW1/4 SW1/4	18	87N	4E
SE CORNER NW1/4 SW1/4	18	87N	4E
W1/4 CORNER	18	87N	4E



I hereby certify that this land surveying document was prepared and related survey work was performed by me or under my direct personal supervision and that I am a duly licensed Land Surveyor under the laws of the State of Iowa.

William H. Burger 2/10/06
William H. Burger Date

License number 12642

My license renewal date is December 31, 2006

Pages or Sheets covered by this seal Sheet 1 of 1.

Book 2 Page 415



Document 06-3091

Book 2 Page 467 Type 15 001 Pages 1

Date 8/09/2006 Time 9:00 AM

Rec Amt \$7.00

ARLENE SCHAUF, RECORDER
JACKSON COUNTY IOWA

Prepared by Wm. Burger LandSurveyors

510 3rd Street West Court, Worthington, Iowa

Phone 563 - 855 2028

UNITED STATES PUBLIC LAND SURVEY CORNER CERTIFICATE

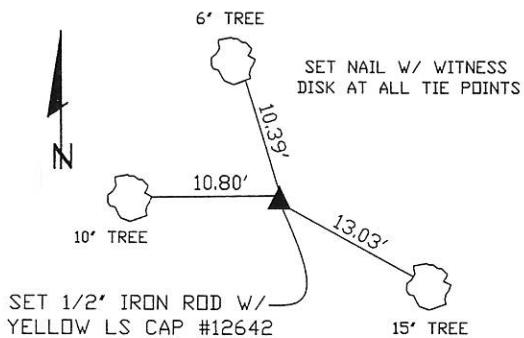
Land Survey Monuments situated in Section 18, Township 87N, Range 4E, of the Fifth Principal Meridian, Jackson County, Iowa. Previously recorded in N/A In the Office of the County Recorder

Monument Description and Remarks: (No Corner Certificates found at the County Recorders Office)

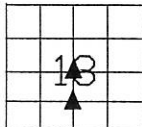
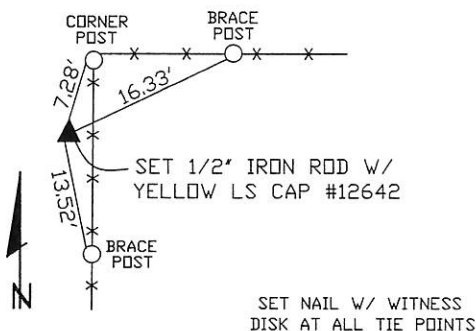
CENTER OF SECTION - SET 1/2" IRON ROD W/ YELLOW LS CAP #12642 - SET ONLINE
BETWEEN THE E1/4 CORNER AND THE W1/4 CORNER AND USED FENCELINE EVIDENCE TO THE NORTH
AND SOUTHSE CORNER NE1/4 SW1/4 - SET 1/2" IRON ROD W/ YELLOW LS CAP #12642 - SET ONLINE
AND MIDWAY BETWEEN THE S1/4 CORNER AND THE CENTER OF SECTION

PLAN VIEW

CENTER OF SECTION



SE CORNER NE1/4 SW1/4



SEC. 18 TWP. 87N RANGE 4E

CORNERS TO BE INDEXED

CENTER OF SECTION 18 87N 4E

SE CORNER NE1/4 SW1/4 18 87N 4E



I hereby certify that this land surveying document was prepared and related survey work was performed by me or under my direct personal supervision and that I am a duly licensed Land Surveyor under the laws of the State of Iowa.


 William H. Burger Date 7/5/06

License number 12642

My license renewal date is December 31, 2006

Pages or Sheets covered by this seal Sheet 1 of 1

Book 2 Page 467