



Document 06-4731

Book 2 Page 501 Type 15 001 Pages 1
Date 12/14/2006 Time 10:42 AM
Rec Amt \$7.00

ARLENE SCHAUF, RECORDER
JACKSON COUNTY IOWA

Prepared by: SCHNEIDER Land Surveying and Planning, Inc. P.O. Box 128 Farley, Iowa 52046 563-744-3631

UNITED STATES PUBLIC LAND SURVEY CORNER CERTIFICATE OF

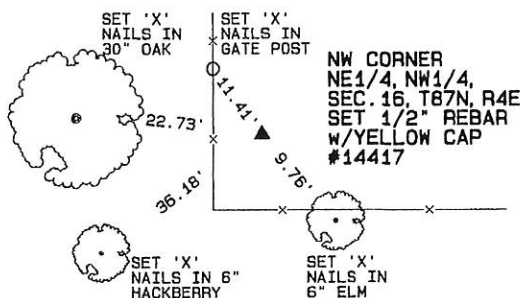
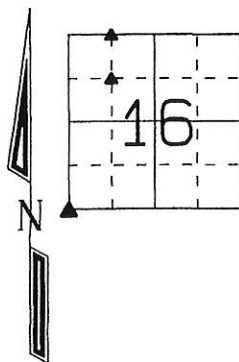
Land Survey Monuments situated in Section 16, Township 87 North, Range 4 East
of the Fifth Principal Meridian, Jackson County, Iowa.
Previously recorded (NONE OF RECORD)

(Show reason for preparing this certificate, the evidence and detailed procedures used in establishing the corner positions and monumentation found or placed.)

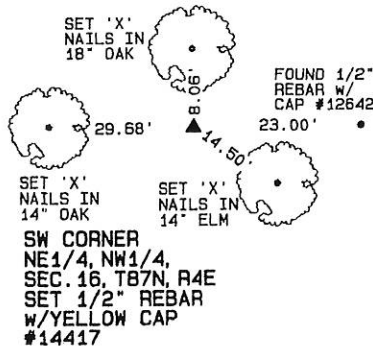
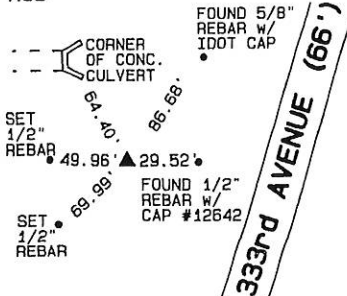
Monument Description and Remarks: THE NW CORNER OF THE NE1/4 OF THE NW1/4 OF SEC. 16, T87N, R4E WAS
ESTABLISHED 274.14 FEET WEST OF THE MONUMENT FOUND IN THE CENTER OF 333rd AVENUE AS SHOWN ON A SURVEY FILED
JULY 23, 1975 IN BOOK 1-C, PAGE 43. A 1/2" IRON ROD WAS FOUND AT THE SW CORNER OF SECTION 16, T87N, R4E.
THE SW CORNER OF THE NE1/4 OF THE NW1/4 OF SEC. 16, T87N, R4E WAS ESTABLISHED AT THE THEORETICAL CENTER OF
THE NORTHWEST QUARTER OF SAID SECTION 16.

PLAN - VIEW

(Show a minimum of three reference ties to durable physical objects, relevant monuments and physical conditions that will enable recovery of the corner.)



SW CORNER
SEC. 16, T87N, R4E
FOUND 1/2" IRON
ROD

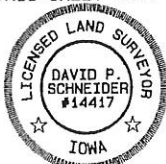


I hereby certify that this land surveying document was prepared and the related survey work was performed by me or under my direct personal supervision and that I am a duly licensed Land Surveyor under the laws of the State of Iowa.

David P. Schneider P.L.S. #14417 Date: 12/13/2006
My license renewal date is December 31, 2007.
pages or sheets covered by this seal: THIS SHEET ONLY

SCHNEIDER
Land Surveying & Planning, Inc.

P.O. Box 128 Farley, Iowa 52046
Ph. #563-744-3631 Fax#563-744-3629



List Corners to be Indexed

Corners	Section	Twp	Range
NW CORNER NE1/4, NW1/4	16	87N	4E
SW CORNER NE1/4, NW1/4	16	87N	4E
SW CORNER	16	87N	4E

Book 2 Page 501

JOB NO. 928



Document 06-4732

Book 2 Page 502 Type 15 001 Pages 1
Date 12/14/2006 Time 10:42 AM
Rec Amt \$7.00

ARLENE SCHAUF, RECORDER
JACKSON COUNTY IOWA

Prepared by: SCHNEIDER Land Surveying and Planning, Inc. P.O. Box 128 Farley, Iowa 52046 563-744-3631

UNITED STATES PUBLIC LAND SURVEY CORNER CERTIFICATE OF

Land Survey Monuments situated in Section 16, Township 87 North, Range 4 East
of the Fifth Principal Meridian, Jackson County, Iowa.
Previously recorded (NONE OF RECORD)

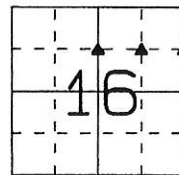
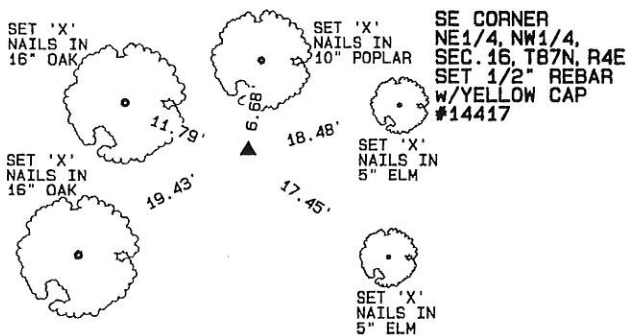
(Show reason for preparing this certificate, the evidence and detailed procedures used in establishing the corner positions and monumentation found or placed.)

Monument Description and Remarks:

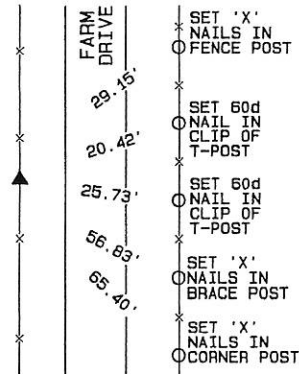
THE SE CORNER OF THE NE1/4 OF THE NW1/4 OF SEC.16, T87N, R4E WAS ESTABLISHED AT THE MIDPOINT OF A LINE FROM THE
N1/4 CORNER TO THE CENTER OF SAID SECTION 16. THE SW CORNER OF THE NE1/4 OF THE NE1/4 OF SEC.16, T87N, R4E
WAS ESTABLISHED AT THE THEORETICAL CENTER OF THE NORTHEAST QUARTER OF SAID SECTION 16. THE SE CORNER OF THE
NE1/4 OF THE NE1/4 OF SEC.16, T87N, R4E WAS ESTABLISHED AT THE MIDPOINT OF A LINE FROM THE NE CORNER TO THE E1/4
CORNER OF SAID SECTION 16.

PLAN - VIEW

(Show a minimum of three reference ties to durable physical objects, relevant monuments and physical conditions that will enable recovery of the corner.)



SE CORNER
NE1/4, NE1/4,
SEC. 16, T87N, R4E
SET 1/2\"/>



I hereby certify that this land surveying document was prepared and the related survey work was performed by me or under my direct personal supervision and that I am a duly licensed Land Surveyor under the laws of the State of Iowa.

David P. Schneider P.L.S. #14417 Date: 12/13/2006
My license renewal date is December 31, 2007.

Pages or sheets covered by this seal: THIS SHEET ONLY

SCHNEIDER
Land Surveying & Planning, Inc.

P.O. Box 128 Farley, Iowa 52046
Ph. #563-744-3631 Fax#563-744-3629



List Corners to be Indexed

Corners	Section	Twp	Range
SE CORNER NE1/4, NW1/4	16	87N	4E
SW CORNER NE1/4, NE1/4	16	87N	4E
SE CORNER NE1/4, NE1/4	16	87N	4E

Back 2 Page 502

JOB NO. 928



Document 07-1040

Book 2 Page 548 Type 15 001 Pages 1

Date 3/12/2007 Time 3:09 PM

Rec Amt \$7.00

ARLENE SCHAUF, RECORDER
JACKSON COUNTY IOWA

Prepared by: SCHNEIDER Land Surveying and Planning, Inc. P.O. Box 128 Farley, Iowa 52046 563-744-3631

UNITED STATES PUBLIC LAND SURVEY CORNER CERTIFICATE OF

Land Survey Monuments situated in Section 16, Township 87 North, Range 4 East of the Fifth Principal Meridian, Jackson County, Iowa.

Previously recorded (NONE OF RECORD)
(BOOK, PAGE / INST. NO. / CABINET, SLIDE)

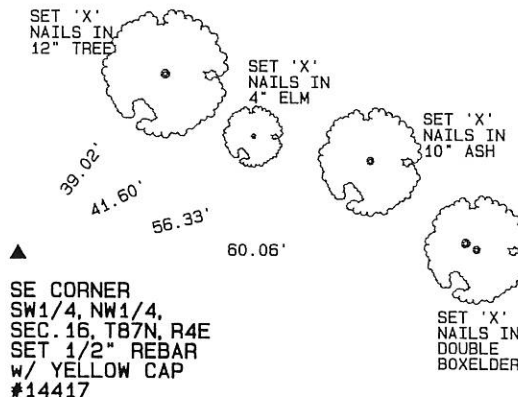
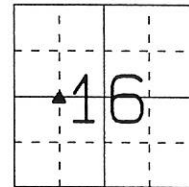
(Show reason for preparing this certificate, the evidence and detailed procedures used in establishing the corner positions and monumentation found or placed.)

Monument Description and Remarks:

THE SE CORNER OF THE SW1/4 OF THE NW1/4 OF SEC. 16, T87N, R4E WAS ESTABLISHED AT THE MIDPOINT OF A LINE FROM THE W1/4 CORNER TO THE CENTER OF SAID SECTION 16.

PLAN - VIEW

(Show a minimum of three reference ties to durable physical objects, relevant monuments and physical conditions that will enable recovery of the corner.)

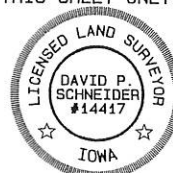


I hereby certify that this land surveying document was prepared and the related survey work was performed by me or under my direct personal supervision and that I am a duly licensed Land Surveyor under the laws of the State of Iowa.

David P. Schneider 1/30/2007
David P. Schneider P.L.S. #14417 Date:
My license renewal date is December 31, 2007.

Pages or sheets covered by this seal: THIS SHEET ONLY

SCHNEIDER
Land Surveying & Planning, Inc.
P.O. Box 128 Farley, Iowa 52046
Ph. #563-744-3631 Fax#563-744-3629



List Corners to be Indexed

Corners	Section	Twp	Range
SE CORNER SW1/4, NW1/4	16	87N	4E

Back 2 Page 548

JOB NO. 928



Document 07-3133

Book 2 Page 573 Type 15 001 Pages 1
Date 7/10/2007 Time 1:27 PM
Rec Amt \$7.00

ARLENE SCHAUF, RECORDER
JACKSON COUNTY IOWA

Prepared by: SCHNEIDER Land Surveying and Planning, Inc. P.O. Box 128 Farley, Iowa 52046 563-744-3631

UNITED STATES PUBLIC LAND SURVEY CORNER CERTIFICATE OF

Land Survey Monuments situated in Section 16, Township 87 North, Range 4 East
of the Fifth Principal Meridian, Jackson County, Iowa.

Previously recorded S.C.C. BOOK 2, PAGE 500

(BOOK, PAGE / INST. NO. / CABINET, SLIDE)

(Show reason for preparing this certificate, the evidence and detailed procedures used in establishing the corner positions and monumentation found or placed.)

Monument Description and Remarks:

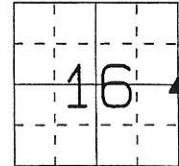
THE E1/4 CORNER OF SECTION 16, T87N, R4E WAS PREVIOUSLY TIED IN A SECTION CORNER CERTIFICATE RECORDED AS S.C.C.

BOOK 2, PAGE 500. THE CORNER IS BEING RETIED BECAUSE THE FENCE AND TREES TO WHICH IT WAS TIED HAVE BEEN

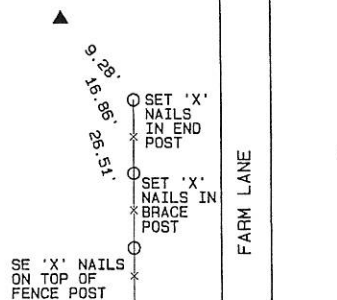
REMOVED.

PLAN - VIEW

(Show a minimum of three reference ties to durable physical objects, relevant monuments and physical conditions that will enable recovery of the corner.)



E1/4 CORNER
SEC. 16, T87N, R4E
FOUND 1/2" REBAR
w/ YELLOW CAP
#14417 - S.C.C.
BOOK 2, PAGE 500



I hereby certify that this land surveying document was prepared and the related survey work was performed by me or under my direct personal supervision and that I am a duly licensed Land Surveyor under the laws of the State of Iowa.

David P. Schneider 7/7/2007
David P. Schneider P.L.S. #14417 Date:
My license renewal date is December 31, 2007.

Pages or sheets covered by this seal: THIS SHEET ONLY

SCHNEIDER
Land Surveying & Planning, Inc.

P.O. Box 128 Farley, Iowa 52046
Ph. #563-744-3631 Fax #563-744-3629



List Corners to be Indexed

Corners	Section	Twp	Range
E1/4	16	87N	4E

Book 2 Page 573

JOB NO. 1092