



Document 14-3975

Book 3 Page 152 Type 15 001 Pages 1
Date 11/19/2014 Time 11:12 AM
Rec Amt \$7.00

ARLENE SCHAUF, RECORDER/REGISTRAR
JACKSON COUNTY IOWA

PREPARED BY: MICHAEL J. WEBER, WEBER SURVEYING, LLC, 26789 46TH AVE, BERNARD, IA 52032 (563) 879-4173

UNITED STATES PUBLIC LAND SURVEY CORNER CERTIFICATE OF

LAND SURVEY MONUMENTS SITUATED IN SECTION 14, TOWNSHIP 87 NORTH, RANGE 4 EAST
OF THE FIFTH PRINCIPAL MERIDIAN, JACKSON COUNTY, IOWA.
PREVIOUSLY RECORDED NONE UNLESS NOTED BELOW

(Show reason for preparing this certificate, the evidence and detailed procedures used in establishing the corner positions and monumentation found or placed.)

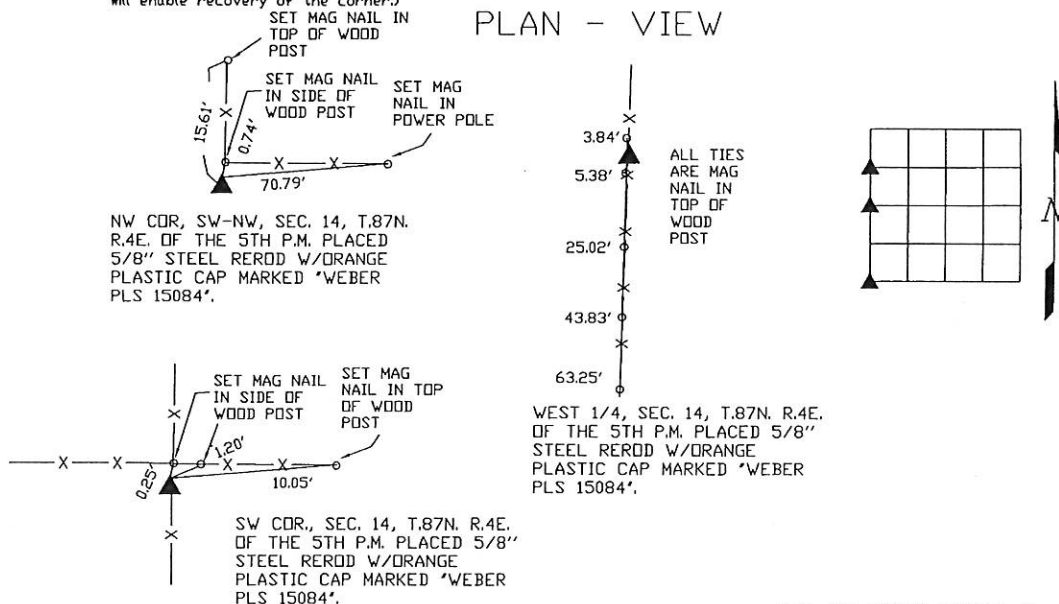
Monument Description and Remarks (book, page, document number, etc.)

-NW COR., SW-NW, SEC. 14, T.87N. R.4E. OF THE 5TH P.M. PLACED 5/8" STEEL REROD W/ORANGE PLASTIC CAP MARKED 'WEBER PLS 15084'. ESTABLISHED CORNER AT THE INTERSECTION OF THE OCCUPATION FENCE RUNNING NORTH AND EAST.

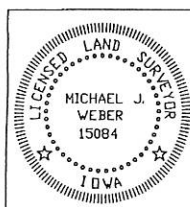
-WEST 1/4 COR., SEC. 14, T.87N. R.4E. OF THE 5TH P.M. PLACED 5/8" STEEL REROD W/ORANGE PLASTIC CAP MARKED 'WEBER PLS 15084'. ESTABLISHED CORNER USING THE INTERSECTION OF OCCUPATION FENCELINES FROM THE WEST RUNNING EAST AND WEST WITH THE FENCELINE RUNNING NORTH AND SOUTH.

-SW COR., SEC. 14, T.87N. R.4E. OF THE 5TH P.M. PLACED 5/8" STEEL REROD W/ORANGE PLASTIC CAP MARKED 'WEBER PLS 15084'. ESTABLISHED CORNER AT THE INTERSECTION OF THE OCCUPATION FENCE RUNNING NORTH, SOUTH, EAST AND WEST.

(Show a minimum of three reference ties to durable physical objects, relevant monuments and physical conditions that will enable recovery of the corner.)



DWG. NO. 14009-PARCEL-C



I HEREBY CERTIFY THAT THIS LAND SURVEYING DOCUMENT WAS PREPARED AND THE RELATED SURVEY WORK WAS PERFORMED BY ME OR UNDER MY DIRECT PERSONAL SUPERVISION AND THAT I AM A DULY LICENSED LAND SURVEYOR UNDER THE LAWS OF THE STATE OF IOWA.

Michael J. Weber October 14, 2014
MICHAEL J. WEBER (DATE)
LICENSE NUMBER 15084
MY LICENSE RENEWAL DATE IS DECEMBER 31, 2015

SHEETS COVERED BY THIS SEAL: THIS SHEET

Corner	Sec	Twp	Range
NW COR., SW-NW	14	87N	4E
WEST 1/4 COR.	14	87N	4E
SW COR.	14	87N	4E

COPY

FILE NO. 04-3320
PAGE 278

JUL 21 PM 1:30

Prepared by Wm. Burger Land Surveyors

510 3rd Street West Court, Worthington, MN 56130

PHYLLIS M. GERLACH
JACKSON COUNTY, IOWA
RECORDER

Fee 7.00

UNITED STATES PUBLIC LAND SURVEY CORNER CERTIFICATE

Land Survey Monuments situated in Section 14, Township 87N, Range 4E, of the Fifth Principal Meridian, Jackson County, Iowa. Previously recorded in N/A in the Office of the County Recorder

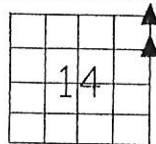
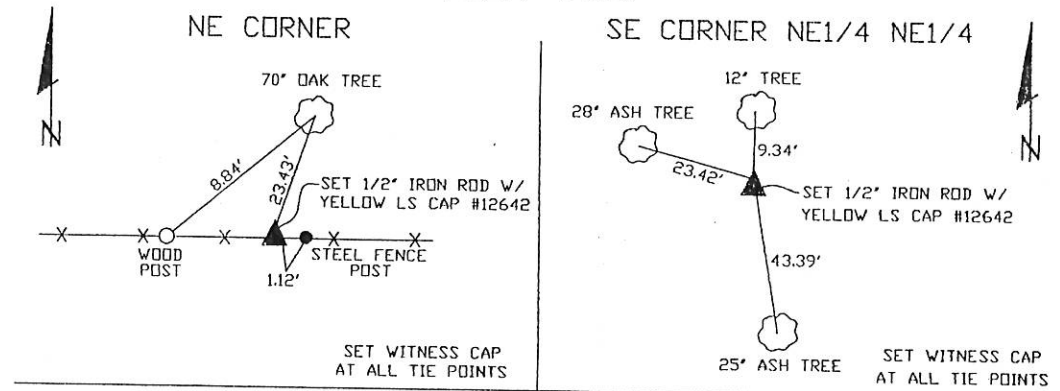
Monument Description and Remarks: (No Corner Certificates Found at the County Recorders Office)

NE CORNER - SET 1/2" IRON ROD W/YELLOW LS CAP #12642 - USED EXISTING EAST/WEST FENCELINE AND USED INFORMATION FROM DEED RECORDED IN BOOK EEE, PAGE 77

SE CORNER NE1/4 NE1/4 - SET 1/2" IRON ROD W/YELLOW LS CAP #12642 - SET 244.2' WEST OF EXISTING FENCELINE & MIDWAY BETWEEN NE CORNER AND E1/4 CORNER

NOTE: METAL DETECTED AND PROBED ALL AREAS BUT NOTHING WAS FOUND.

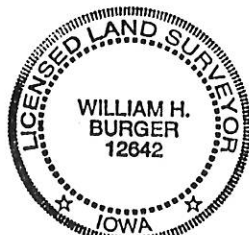
PLAN VIEW



SEC. 14 TWP. 87N RANGE 4E

CORNERS TO BE INDEXED

NE CORNER	14	87N	4E
SE CORNER NE1/4 NE1/4	14	87N	4E



I hereby certify that this land surveying document was prepared and related survey work was performed by me or under my direct personal supervision and that I am a duly licensed Land Surveyor under the laws of the State of Iowa.

William H. Burger 6/1/04
William H. Burger Date

License number 12642

My license renewal date is December 31, 2004

Pages or Sheets covered by this seal: Sheet 1 of 1

COPY

FILE NO. 04-3321
PAGE 299

04 JUL 21 PM 1:30

Prepared by Wm. Burger Land Surveyors

510 3rd Street West Court, Worthington, Iowa

PHYLLIS M. GERLACH
JACKSON COUNTY, IOWA
RECORDER 855 2028

UNITED STATES PUBLIC LAND SURVEY CORNER CERTIFICATE

Land Survey Monuments situated in Section 14, Township 87N, Range 4E, of the Fifth Principal Meridian, Jackson County, Iowa. Previously recorded in N/A in the Office of the County Recorder

Monument Description and Remarks: (No Corner Certificates Found at the County Recorders Office)

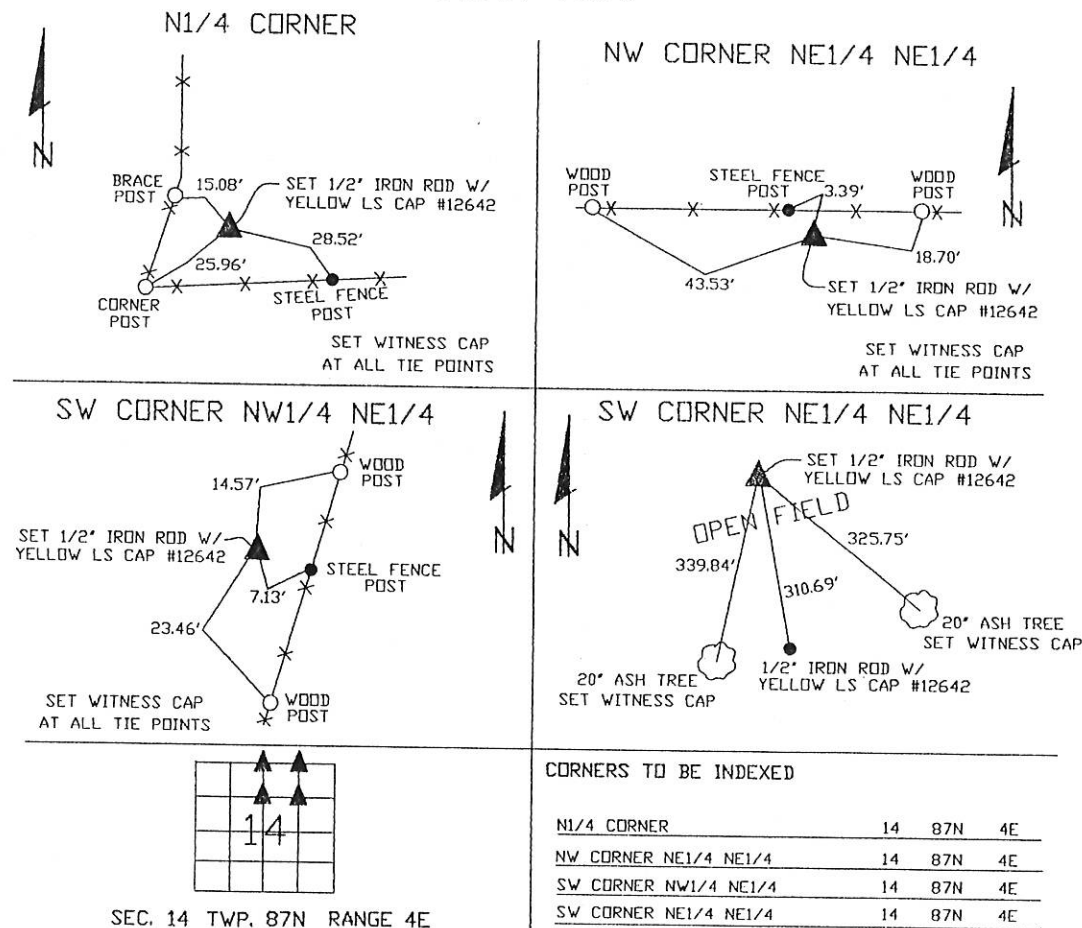
N1/4 CORNER - SET 1/2" IRON ROD W/YELLOW LS CAP #12642 - USED EXISTING FENCELINE TO NORTH AND EAST AND SET AT INTERSECTION

NW CORNER NE1/4 NE1/4 - SET 1/2" IRON ROD W/YELLOW LS CAP #12642 - SET ON LINE AND MIDWAY BETWEEN THE N1/4 CORNER AND THE NE CORNER

SW CORNER NW1/4 NE1/4 - SET 1/2" IRON ROD W/YELLOW LS CAP #12642 - SET ON LINE AND MIDWAY BETWEEN THE N1/4 CORNER AND THE CENTER OF SECTION

SW CORNER NE1/4 NE1/4 - SET 1/2" IRON ROD W/YELLOW LS CAP #12642 - RUN STRAIGHT LINES FROM OPPOSITE 1/4 1/4 CORNERS AND SET AT POINT OF INTERSECTION
NOTE: METAL DETECTED AND PROBED ALL AREAS BUT NOTHING WAS FOUND

PLAN VIEW



I hereby certify that this land surveying document was prepared and related survey work was performed by me or under my direct personal supervision and that I am a duly licensed Land Surveyor under the laws of the State of Iowa.

William H. Burger 6/1/04
Date

License number 12642

My license renewal date is December 31, 2004

Pages or Sheets covered by this seal Sheet 1 of 1



Document 14-3975

Book 3 Page 152 Type 15 001 Pages 1
Date 11/19/2014 Time 11:12 AM
Rec Amt \$7.00

ARLENE SCHAUF, RECORDER/REGISTRAR
JACKSON COUNTY IOWA

PREPARED BY: MICHAEL J. WEBER, WEBER SURVEYING, LLC, 26789 46TH AVE, BERNARD, IA 52032 (563) 879-4173

UNITED STATES PUBLIC LAND SURVEY CORNER CERTIFICATE OF

LAND SURVEY MONUMENTS SITUATED IN SECTION 14, TOWNSHIP 87 NORTH, RANGE 4 EAST
OF THE FIFTH PRINCIPAL MERIDIAN, JACKSON COUNTY, IOWA.
PREVIOUSLY RECORDED NONE UNLESS NOTED BELOW

(Show reason for preparing this certificate, the evidence and detailed procedures used in establishing the corner positions and monumentation found or placed.)

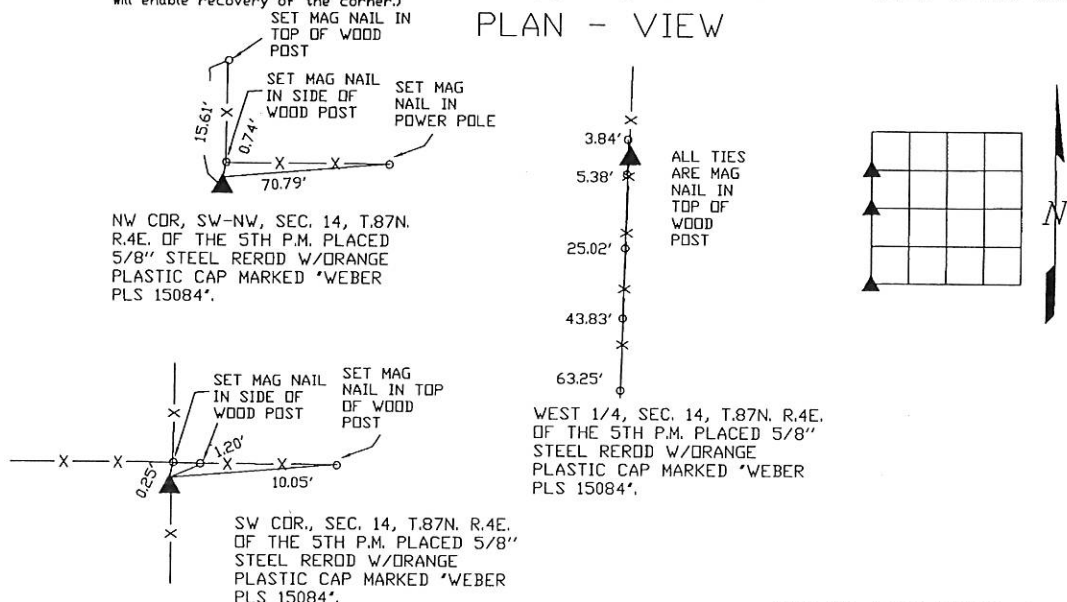
Monument Description and Remarks (book, page, document number, etc.)

-NW COR., SW-NW, SEC. 14, T.87N. R.4E. OF THE 5TH P.M. PLACED 5/8" STEEL REROD W/ORANGE PLASTIC CAP MARKED 'WEBER PLS 15084'. ESTABLISHED CORNER AT THE INTERSECTION OF THE OCCUPATION FENCE RUNNING NORTH AND EAST.

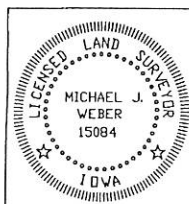
-WEST 1/4 COR., SEC. 14, T.87N. R.4E. OF THE 5TH P.M. PLACED 5/8" STEEL REROD W/ORANGE PLASTIC CAP MARKED 'WEBER PLS 15084'. ESTABLISHED CORNER USING THE INTERSECTION OF OCCUPATION FENCE LINES FROM THE WEST RUNNING EAST AND WEST WITH THE FENCE LINE RUNNING NORTH AND SOUTH.

-SW COR., SEC. 14, T.87N. R.4E. OF THE 5TH P.M. PLACED 5/8" STEEL REROD W/ORANGE PLASTIC CAP MARKED 'WEBER PLS 15084'. ESTABLISHED CORNER AT THE INTERSECTION OF THE OCCUPATION FENCE RUNNING NORTH, SOUTH, EAST AND WEST.

(Show a minimum of three reference ties to durable physical objects, relevant monuments and physical conditions that will enable recovery of the corner.)



DWG. NO. 14009-PARCEL-C



I HEREBY CERTIFY THAT THIS LAND SURVEYING DOCUMENT WAS PREPARED AND THE RELATED SURVEY WORK WAS PERFORMED BY ME OR UNDER MY DIRECT PERSONAL SUPERVISION AND THAT I AM A DULY LICENSED LAND SURVEYOR UNDER THE LAWS OF THE STATE OF IOWA.

MICHAEL J. WEBER
LICENSE NUMBER 15084
MY LICENSE RENEWAL DATE IS DECEMBER 31, 2015
SHEETS COVERED BY THIS SEAL: THIS SHEET

List Corners to be Indexed			
Corner	Sec	Twp	Range
NW COR., SW-NW	14	87N	4E
WEST 1/4 COR.	14	87N	4E
SW COR.	14	87N	4E