



Document 13-59

Book 3 Page 74 Type 15 001 Pages 1

Date 1/04/2013 Time 11:23 AM

Rec Amt \$7.00

ARLENE SCHAUF, RECORDER/REGISTRAR
JACKSON COUNTY IOWA

Prepared by: SCHNEIDER Land Surveying and Planning, Inc. P.O. Box 128 Farley, Iowa 52046 563-744-3631

UNITED STATES PUBLIC LAND SURVEY CORNER CERTIFICATE OF

Land Survey Monuments situated in Section 10, Township 87 North, Range 4 East of the Fifth Principal Meridian, Jackson County, Iowa.

Previously recorded (NONE OF RECORD)

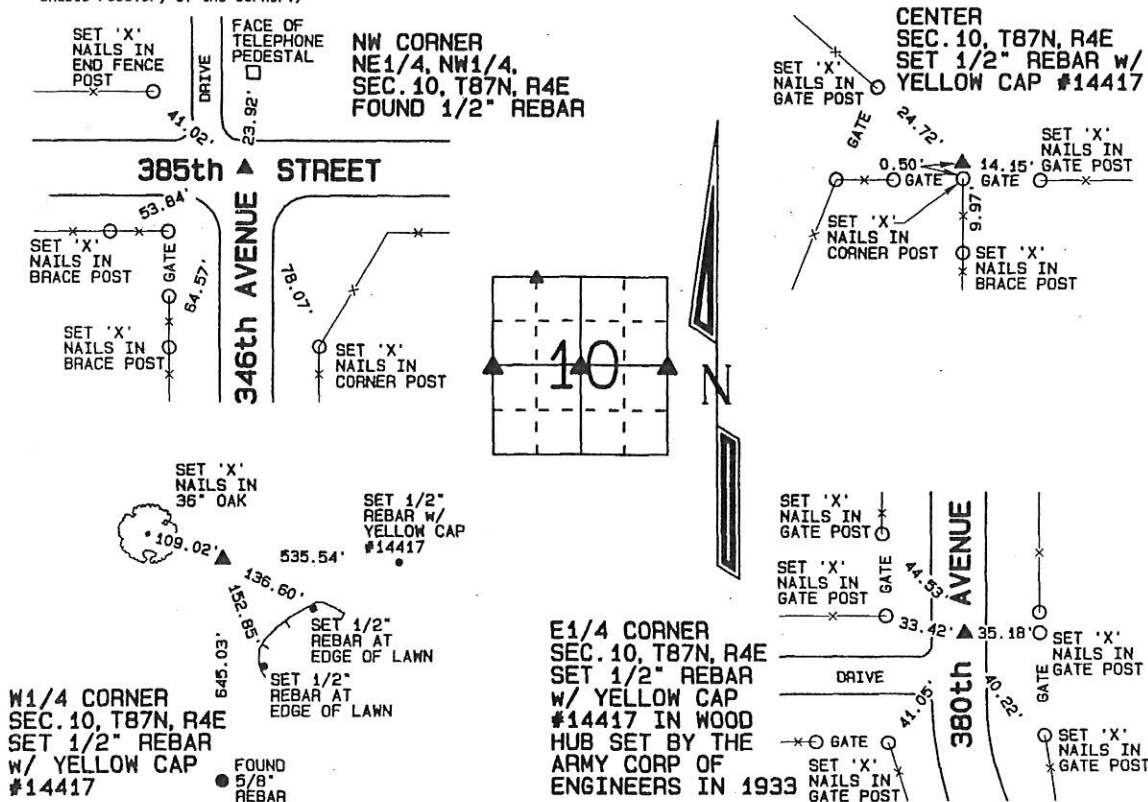
(BOOK, PAGE / INSTR. NO. / CADDSET, BLTIDE)

(Show reason for preparing this certificate, the evidence and detailed procedures used in establishing the corner positions and monumentation found or placed.)

Monument Description and Remarks: A 1/2" REBAR WAS FOUND AT THE NW CORNER OF THE NE1/4 OF THE NW1/4 OF SECTION 10, T87N, R4E. THE W1/4 CORNER OF SECTION 10, T87N, R4E WAS ESTABLISHED IN LINE WITH THE SW CORNER OF THE SECTION AND A 5/8" REBAR FOUND 645' TO THE SOUTH AND IN LINE WITH OCCUPATION EVIDENCE TO THE EAST THE CENTER OF SECTION 10, T87N, R4E WAS ESTABLISHED ON A LINE FROM THE E1/4 CORNER TO THE W1/4 CORNER AND USING OCCUPATION EVIDENCE LOCATED TO THE SOUTH. A WOODEN HUB SET BY THE ARMY CORP OF ENGINEERS IN 1933 WAS FOUND AT THE E1/4 CORNER OF SECTION 10, T87N, R4E AS ILLUSTRATED IN CORP NOTES. A 1/2" REBAR WAS DRIVEN THROUGH THE HUB AND USED AS SAID E1/4 CORNER

PLAN - VIEW

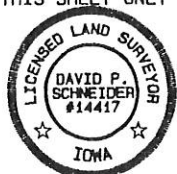
(Show a minimum of three reference ties to durable physical objects, relevant monuments and physical conditions that will enable recovery of the corner.)



I hereby certify that this land surveying document was prepared and the related survey work was performed by me or under my direct personal supervision and that I am a duly licensed Land Surveyor under the laws of the State of Iowa.

David P. Schneider 12/30/2012
vid P. Schneider P.L.S. #14417 Date:
license renewal date is December 31, 2013.

pages or sheets covered by this seal: THIS SHEET ONLY

**SCHNEIDER**
Land Surveying & Planning, Inc.P.O. Box 128 Farley, Iowa 52046
Ph. #563-744-3631 Fax #563-744-3629**List Corners to be Indexed**

Corners	Section	Twp	Range
NW CORNER NE1/4, NW1/4	10	87N	4E
W1/4 CORNER	10	87N	4E
CENTER	10	87N	4E
E1/4 CORNER	10	87N	4E

JOB NO. 1684