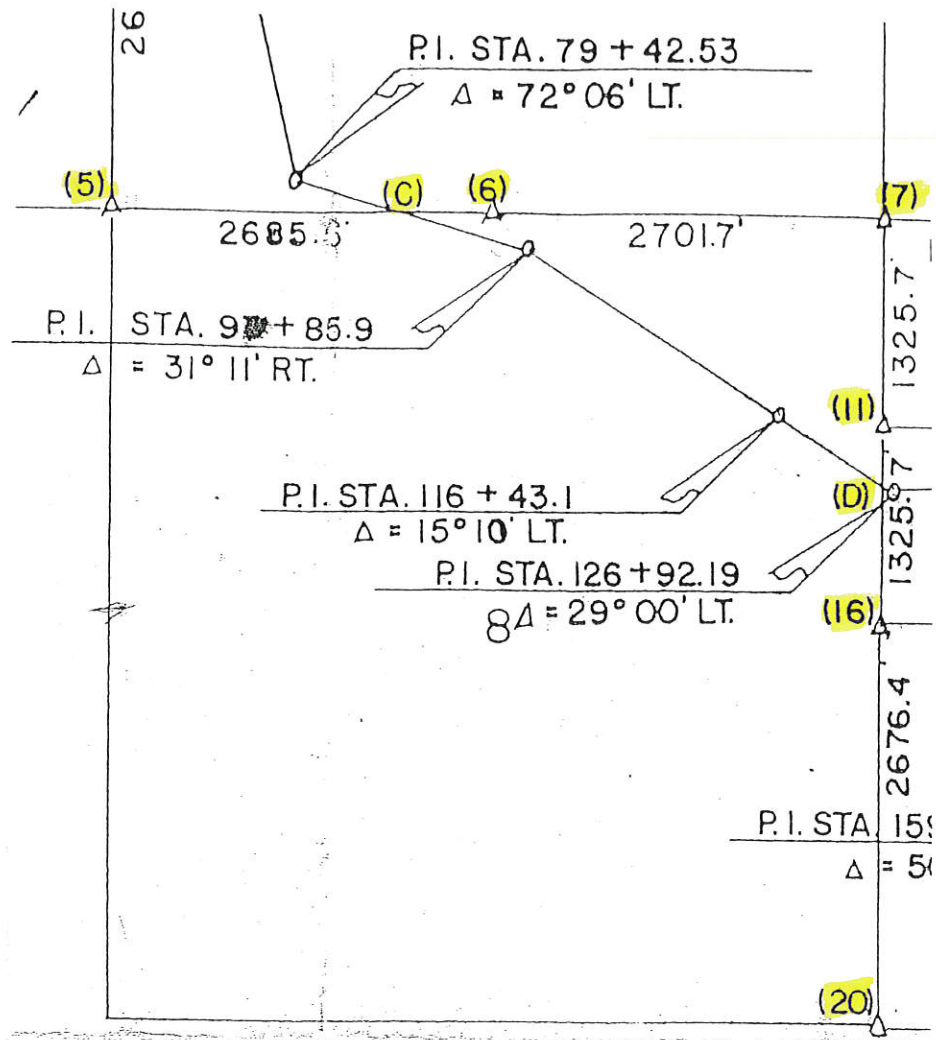


Sec. 8



LAND  
T-84-N

CORNER

SURVEY  
R-2-E

MADE FOR

IOWA STATE HIGHWAY COMMISSION FOR THE PURPOSE OF R.O.W.  
DESCRIPTIONS ON IOWA PRIMARY ROAD NO. 130 FROM THE MAQUOKETA  
CAVES STATE PARK EAST TO THE TOWN OF MAQUOKETA.

MADE BY

JOHN D. FRANKLIN  
JACKSON COUNTY

R.L.S. NO. 2051  
F-1117

SEPT. - OCT. 1959

ALL DISTANCES WERE CAREFULLY MEASURED AND MAY NOT AGREE WITH ROAD  
SURVEY STATIONING.

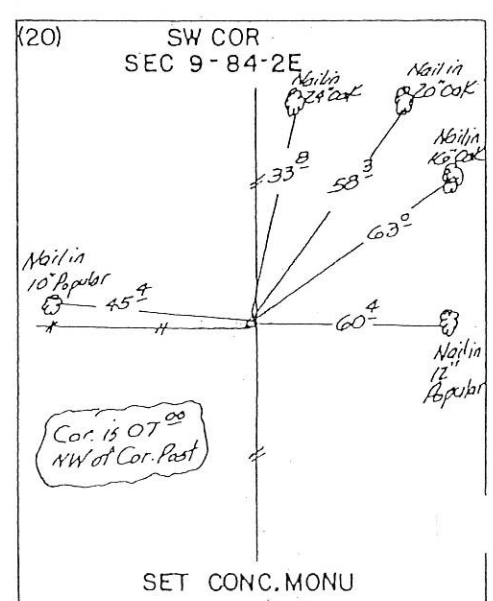
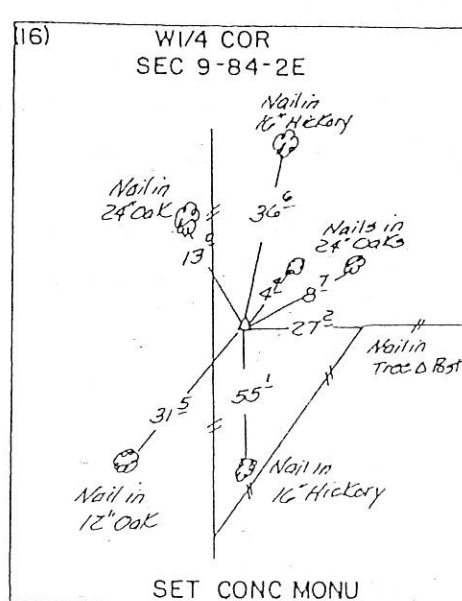
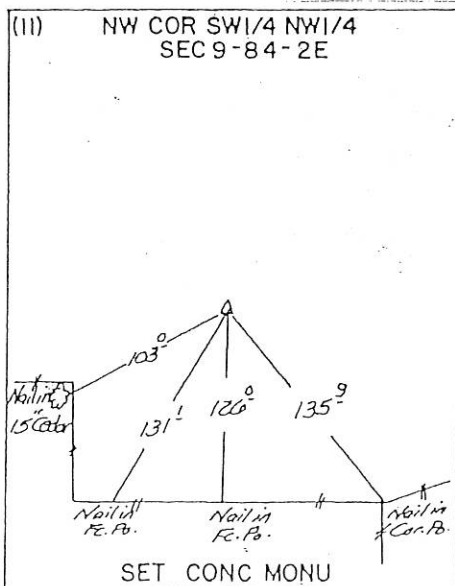
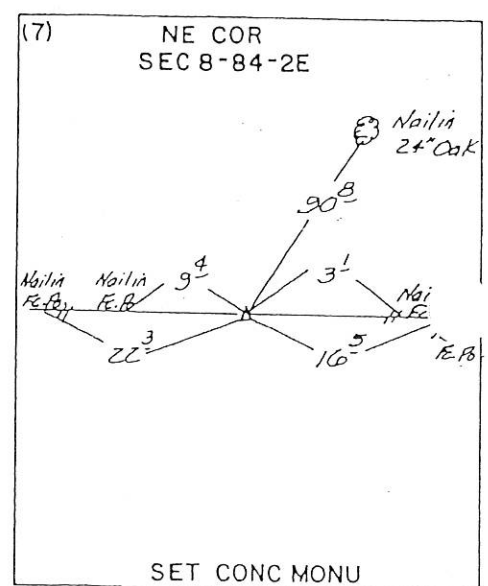
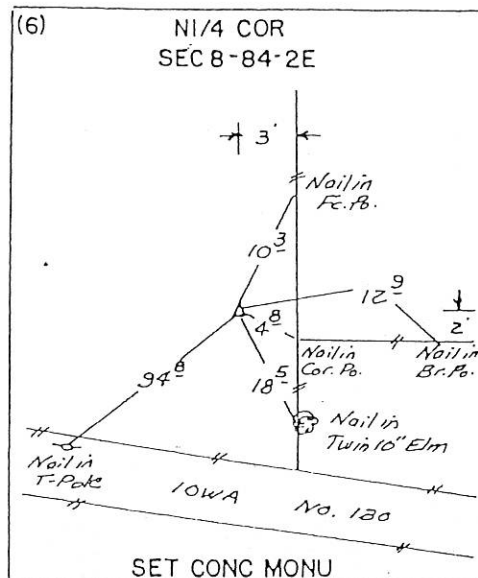
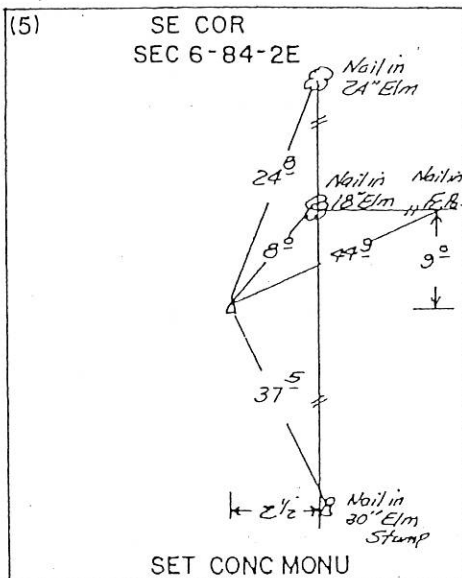
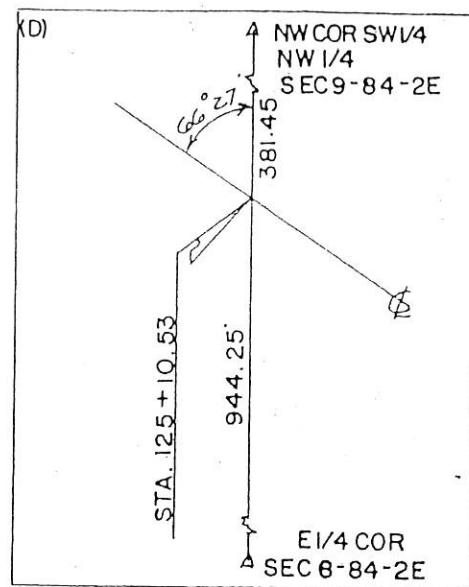
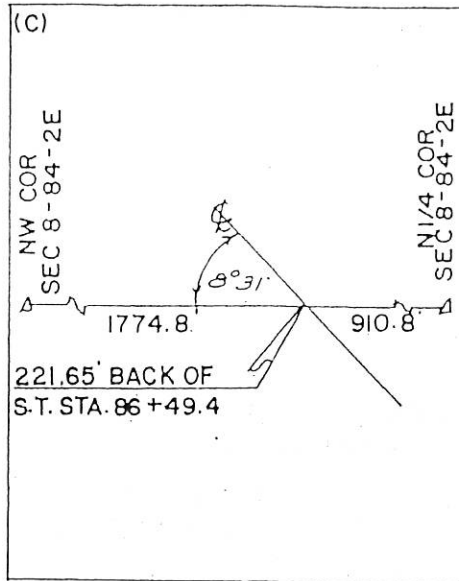
FOR COMPLETE INFORMATION ON THIS SURVEY, SEE FIELD NOTES ON FILE IN  
AMES OFFICE.

I, HEREBY CERTIFY THAT THIS PLAT IS A TRUE REPRESENTATION OF A SURVEY MADE  
BY ME, ASSISTED BY JAMES D. FRANKLIN, R.F. POPELKA, R.H. JANSS, W.M. MYERS, F.A. NORTON,  
L.R. MCGUIRE, R.P. VAN HORBECK, ELVIN K. IRONS AND R. MCCREA, ALL DULY SWORN, AND IS  
CORRECT TO THE BEST OF MY KNOWLEDGE.

SIGNED: December 8, 1959

John D. Franklin  
JOHN D. FRANKLIN R.L.S. NO. 2051





98 0646

FILE NO. \_\_\_\_\_  
BOOK 1 PAGE 338

1998 FEB 27 A 11: 16

IIV ENGINEERS &amp; SURVEYORS, P.C., 4155 PENNSYLVANIA AVE., DUBUQUE, IOWA, (319) 556-2464

SHIRLEY RITENOUR

JACKSON COUNTY, IOWA

RECORDER *No fee*

## UNITED STATES PUBLIC LAND SURVEY CORNER CERTIFICATE

OF

LAND SURVEY MONUMENTS SITUATED IN SECTION 8, TOWNSHIP 84 NORTH, RANGE 2 EAST  
OF THE FIFTH PRINCIPAL MERIDIAN, JACKSON COUNTY, IOWA.  
PREVIOUSLY RECORDED IN \_\_\_\_\_ IN COUNTY RECORDER'S OFFICE.

(Show reason for preparing this certificate, the evidence and detailed procedures used in establishing the corner positions and monumentation found or placed.)

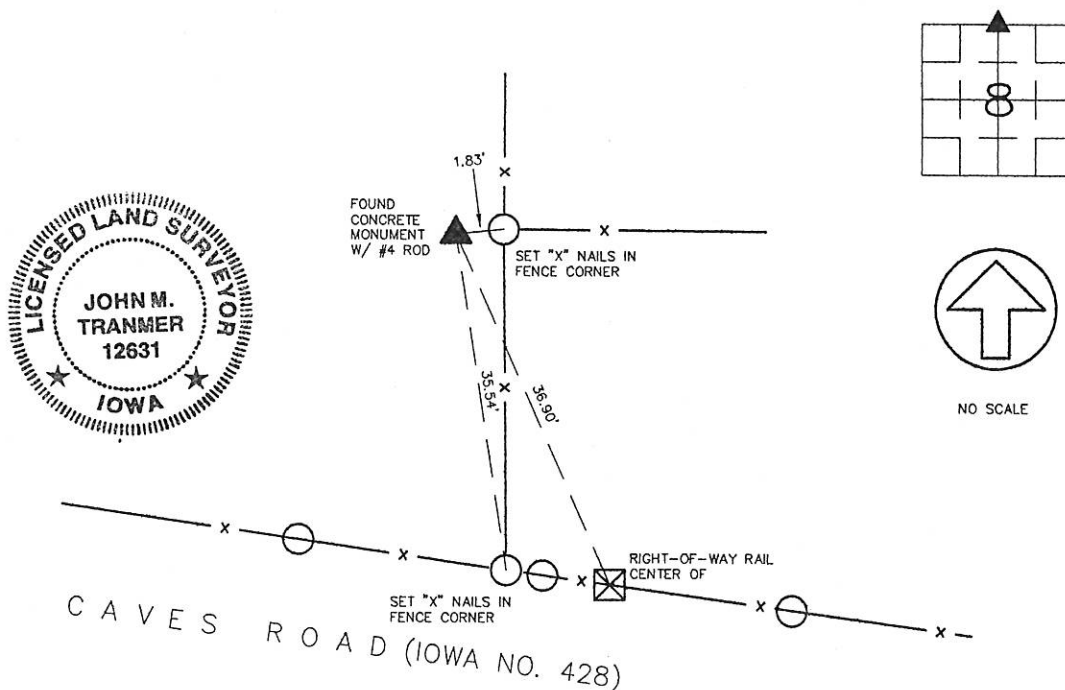
Monument Description and Remarks: \_\_\_\_\_

N 1/4 CORNER, SECTION 8, T84N, R2E - FOUND CONCRETE MONUMENT w/ #4 ROD

NORTH OF CAVES ROAD (IOWA NO. 428).

## PLAN - VIEW

(Show a minimum of three reference ties to durable physical objects, relevant monuments and physical conditions that will enable recovery of the corner.)



I HEREBY CERTIFY THAT THE SURVEY WORK WAS COMPLETED AND THIS CERTIFICATE  
WAS PREPARED BY ME OR UNDER MY DIRECT PERSONAL SUPERVISION AND THAT  
I AM A DULY REGISTERED LAND SURVEYOR UNDER THE LAWS OF THE STATE OF IOWA.

*John M. Tranmer*  
JOHN M. TRANMER REG. NO. 12631

DATE: 2-26-98  
MY REGISTRATION EXPIRES DECEMBER 31, 1998

## LIST CORNERS TO BE INDEXED

CORNERS	SECTION	TWP	RANGE
N 1/4 CORNER	8	T84N	R2E



ENGINEERS AND  
SURVEYORS P.C.

Iowa, Illinois, Wisconsin

4155 Pennsylvania Ave.  
Dubuque, Ia. 52002  
(319) 556-2464

Guttenberg, IA  
Galena, IL  
Cuba City, WI

## MONUMENT RECORD

COUNTY: JACKSON  
TOWNSHIP: SOUTH FORK

DATE: 2-03-98  
REVISED:

FIELD  
BOOK NO. 366

PROJ.  
NO. 977154

INDEX  
NO.

1998 FEB 27 A 11: 16

IHW ENGINEERS & SURVEYORS, P.C. 4155 PENNSYLVANIA AVE, DUBUQUE, IOWA, (319) 556-2464  
SHIRLEY RITENOUR  
JACKSON COUNTY, IOWA  
RECORDER No. 100

# UNITED STATES PUBLIC LAND SURVEY CORNER CERTIFICATE OF

LAND SURVEY MONUMENTS SITUATED IN SECTION 8, TOWNSHIP 84 NORTH, RANGE 2 EAST  
OF THE FIFTH PRINCIPAL MERIDIAN, JACKSON COUNTY, IOWA.  
PREVIOUSLY RECORDED IN \_\_\_\_\_ IN COUNTY RECORDER'S OFFICE.

(Show reason for preparing this certificate, the evidence and detailed procedures used in establishing the corner positions and monumentation found or placed.)

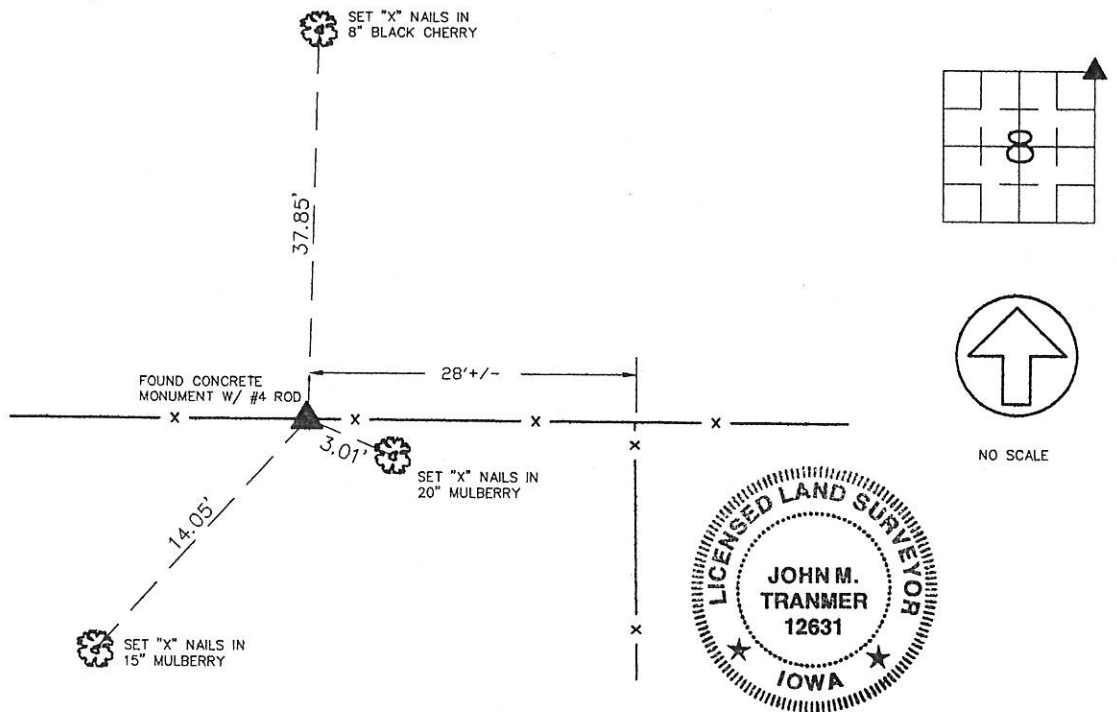
Monument Description and Remarks: \_\_\_\_\_

NE CORNER, SECTION 8, T84N, R2E - FOUND CONCRETE MONUMENT W/ #4 ROD

IN EAST-WEST FENCE LINE.

## PLAN - VIEW

(Show a minimum of three reference ties to durable physical objects, relevant monuments and physical conditions that will enable recovery of the corner.)



I HEREBY CERTIFY THAT THE SURVEY WORK WAS COMPLETED AND THIS CERTIFICATE WAS PREPARED BY ME OR UNDER MY DIRECT PERSONAL SUPERVISION AND THAT I AM A DULY REGISTERED LAND SURVEYOR UNDER THE LAWS OF THE STATE OF IOWA.

*John M. Tranmer*  
JOHN M. TRANMER REG. NO. 12631

DATE: 2-26-98  
MY REGISTRATION EXPIRES DECEMBER 31, 1998

### LIST CORNERS TO BE INDEXED

CORNERS	SECTION	TWP	RANGE
NE CORNER	8	T84N	R2E



Iowa, Illinois, Wisconsin

ENGINEERS AND  
SURVEYORS P.C.

4155 Pennsylvania Ave.  
Dubuque, Ia. 52002  
(319) 556-2464

Guttenberg, IA  
Galena, IL  
Cuba City, WI

## MONUMENT RECORD

COUNTY: JACKSON  
TOWNSHIP: SOUTH FORK

DATE: 2-03-98  
REVISED:

FIELD  
BOOK NO. 366

PROJ.  
NO. 977154

INDEX  
NO.

UNITED STATES PUBLIC LAND SURVEY CORNER CERTIFICATE  
OF

00 MAY -8 AM 11:07  
PHYLLIS M. GERLACH  
JACKSON COUNTY, IOWA  
RECORDER

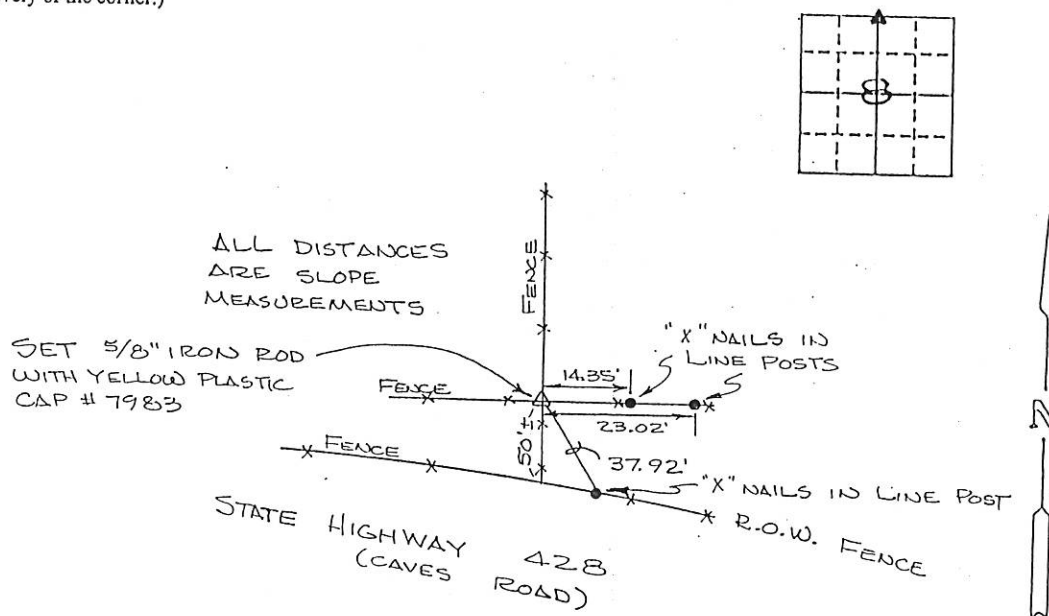
Land Survey Monuments situated in Section 8, Township 8AN, Range 2E, of the Fifth Principal Meridian, JACKSON County, Iowa. Previously recorded in NOT RECORDED in County Recorder's Office. (book, page, document number, etc.) Page 6.00

(Show reason for preparing this certificate, the evidence and detailed procedures used in establishing the corner positions and monumentation found or placed.)

Monument Description and Remarks: THIS POINT WAS FOUND IN 1960 AS A CONC. MOND. BY THE JACKSON COUNTY ENGINEER'S OFFICE, AND USED IN DESCRIPTIONS FOR R.O.W. ACQUISITIONS. IN APRIL, 2000, THIS CORNER WAS MISSING, AND WE RESET IT AT THE INTERSECTION OF A NORTH-SOUTH FENCE WITH AN EAST-WEST FENCE

PLAN - VIEW

(Show a minimum of three reference ties to durable physical object, relevant monuments and physical conditions that will enable recovery of the corner.)

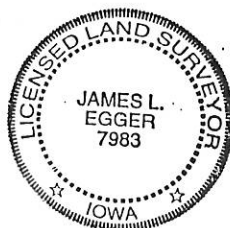


I hereby certify that the survey work was completed and this certificate was prepared by me or under my direct supervision and that I am a duly registered land surveyor under the laws of the state of Iowa.

Signature: James L. Egger  
James L. Egger L.S.

Date: MAY 3, 2000 Reg. No. 7983

SEAL



Corners	Section	Twp	Range
N 1/4	8	8AN	2E



Document 09-1322

Book 2 Page 670 Type 15 001 Pages 1

Date 4/08/2009 Time 10:38 AM

Rec Amt \$7.00

ARLENE SCHAUF, RECORDER/REGISTRAR  
JACKSON COUNTY IOWA

PREPARED BY

STEPHEN MICHAEL BRAIN, BRAIN ENGINEERING, INC., 1540 MIDLAND COURT NE, CEDAR RAPIDS, IOWA PH. (319) 294-9424

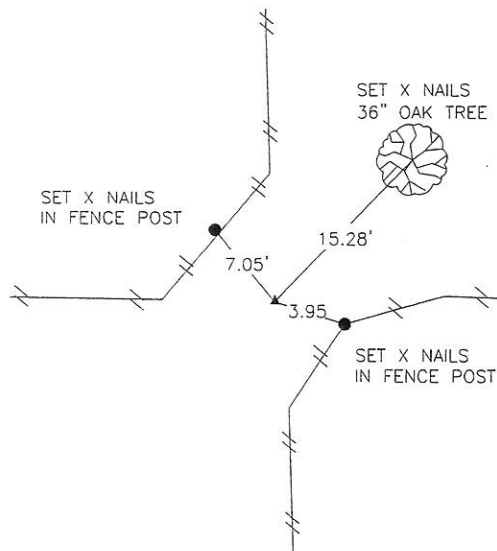
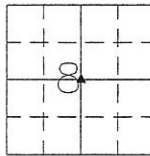
## UNITED STATES PUBLIC LAND SURVEY CORNER CERTIFICATE

LAND SURVEY MONUMENTS SITUATED IN SECTION 8, TOWNSHIP 84 NORTH  
RANGE 2 EAST OF THE 5TH P.M., JACKSON COUNTY, IOWA.

NO SCALE



CENTER



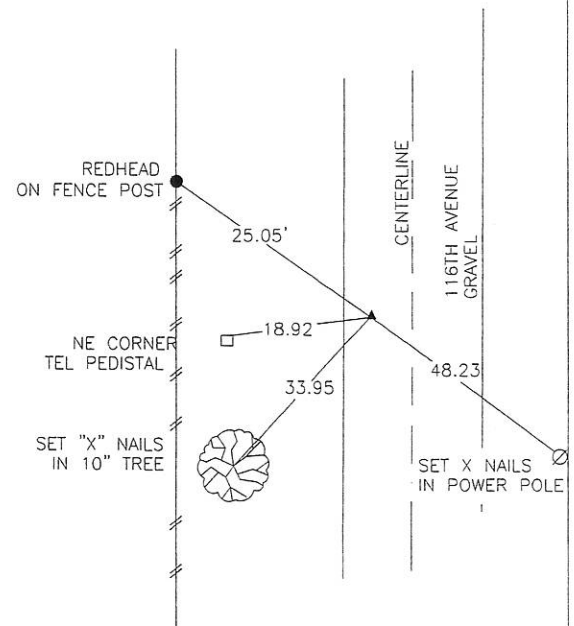
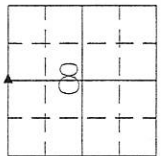
PREVIOUSLY RECORDED IN BOOK \_\_\_\_\_ PAGE \_\_\_\_\_

SET  $\frac{1}{2}$ " REBAR W/ YELLOW PLASTIC CAP #9647 AT  
THE INTERSECTION OF THE NORTH-SOUTH LINE OF  
THE N  $\frac{1}{4}$  AND FENCE TO SOUTH AND THE  
EAST-WEST LINE OF THE EXISTING FENCE.

NO SCALE

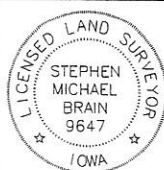


W  $\frac{1}{4}$  CORNER



PREVIOUSLY RECORDED IN BOOK \_\_\_\_\_ PAGE \_\_\_\_\_

SET  $\frac{1}{2}$ " REBAR W/ YELLOW PLASTIC CAP #9647  
BASED ON LOCATION OF EAST-WEST FENCE AND  
DOUBLING DISTANCE FROM FENCES AT CENTER AND  $\frac{1}{2}$   
MILE WEST OF CENTER OF SECTION 8-84-2E



I hereby certify that this land surveying document  
and the related survey work was performed by me  
or under my direct personal supervision and that  
I am a duly licensed Land Surveyor under the laws  
of the State of Iowa.  
Signed Stephen Michael Brain Date 4/7/09  
Stephen Michael Brain, L.S.  
My License Renewal Date is December 31, 2010  
License Number 9647  
Pages or sheets covered by this seal: 1/1

- ☒ A.THERE IS NO CERTIFICATE FOR THE CORNER ON FILE  
WITH THE RECORDER OF THE COUNTY IN WHICH THE  
CORNER IS LOCATED
- ☐ B.THE SURVEYOR IN RESPONSIBLE CHARGE OF THE LAND  
SURVEYING ACCEPTS A CORNER POSITION WHICH DIFFERS  
FROM THAT SHOWN IN THE PUBLIC RECORDS OF THE  
COUNTY IN WHICH THE CORNER IS LOCATED.
- ☐ C.THE CORNER MONUMENT IS REPLACED OR MODIFIED IN  
ANY WAY.
- ☐ D.THE REFERENCE TIES REFERRED TO IN AN EXISTING  
PUBLIC RECORD ARE NOT CORRECT.

### CORNERS TO BE INDEXED

CORNER	SECTION	TOWNSHIP	RANGE
CENTER	8	T84N	R2 E
W $\frac{1}{4}$ CORNER	8	T84N	R2 E

### BRAIN ENGINEERING, INC.

1540 MIDLAND COURT NE  
CEDAR RAPIDS, IOWA 52402 405309-10  
(319) 294-9424