

31

P.I. STA. 7+63.83
 $\Delta = 48^\circ 01' \text{ RT.}$

NOT SET

(29) 1355.0 (2)

2571.1

(A)

2690.0

(1) (3)

(A)

118.8

P.I. STA. 19+19.4
 $\Delta = 84^\circ 40' \text{ RT.}$

P.I. STA. 24+52.2
 $\Delta = 21^\circ 11' \text{ LT.}$

3082.2

(B)

P.I. STA. 38+85.6
 $\Delta = 19^\circ 37' \text{ RT.}$

44

P.I. STA. 48+70.83
 $\Delta = 28^\circ 13' \text{ LT.}$

2626.0

(5)

R.L.S. NO. 2051



UNITED STATES PUBLIC LAND SURVEY CORNER CERTIFICATE

OF

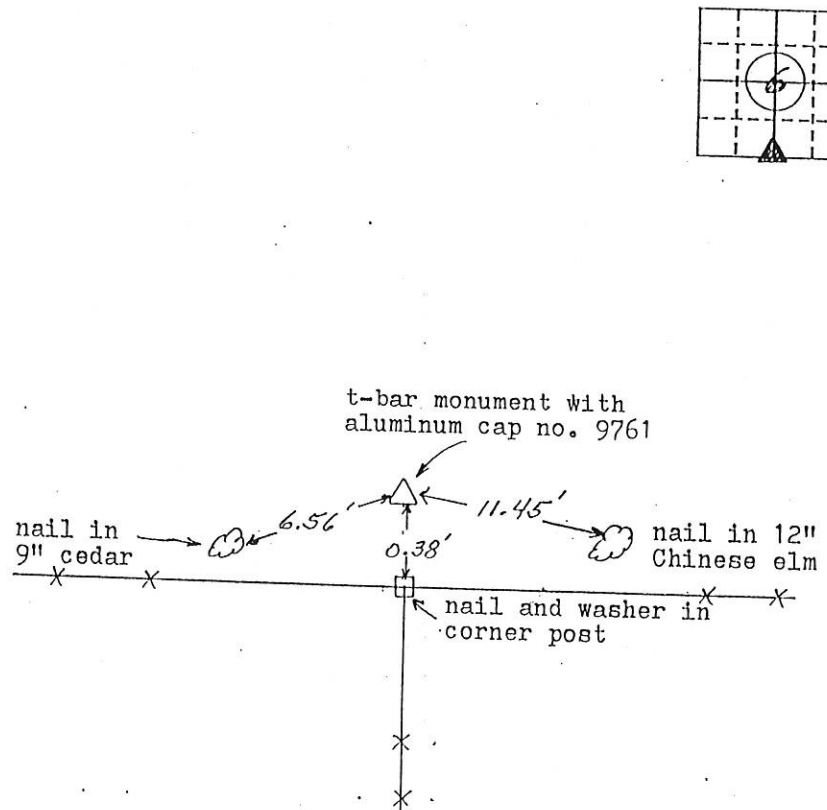
Land Survey Monuments situated in Section 6, Township 84 North, Range 2 East, of the Fifth Principal Meridian, Jackson County, Iowa.
 Previously recorded in Not previously recorded in County Recorder's Office.

(Show reason for preparing this certificate, the evidence and detailed procedures used in establishing the corner positions and monumentation found or placed.)

Monument Description and Remarks: Found iron t-bar monument with aluminum cap
No. 9761 as referred to on plat of survey recorded at Book 1-F, Page 120
records of Jackson County Recorder, while performing survey for Mr.
Robert Niermeyer.

PLAN - VIEW

(Show a minimum of three reference ties to durable physical objects, relevant monuments and physical conditions that will enable recovery of the corner.)



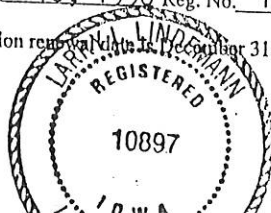
I hereby certify that the survey work was completed and this land surveying document was prepared by me or under my direct personal supervision and that I am a duly registered land surveyor under the laws of the state of Iowa

Signature: LARRY L. LINDEMANN
 Name typed or printed: LARRY L. LINDEMANN

Date: June 10, 1996 Reg. No. 10897

My registration renewal date is October 31, 1997

SEAL



Corners	Section	Twp	Range
S 4 COR	6	84 N	2 E

003769
 FILE NO. 003769
 BOOK 1 PAGE 279

1996 JUL -2 AM 8:34

SHIRLY RITENOUR
 JACKSON COUNTY, IOWA
 RECORDER

Sub 00

98 0643

FILE NO. _____
BOOK 7 PAGE 335

1998 FEB 27 A 11: 16

IHW ENGINEERS & SURVEYORS, P.C. 4155 PENNSYLVANIA AVE. DUBUQUE, IOWA, (319) 556-2464

SHIRLEY PITENOUR
RECORDER 76 JeeUNITED STATES PUBLIC LAND SURVEY CORNER CERTIFICATE
OFLAND SURVEY MONUMENTS SITUATED IN SECTION 6, TOWNSHIP 84 NORTH, RANGE 2 EAST
OF THE FIFTH PRINCIPAL MERIDIAN, JACKSON COUNTY, IOWA.
PREVIOUSLY RECORDED IN _____ IN COUNTY RECORDER'S OFFICE.

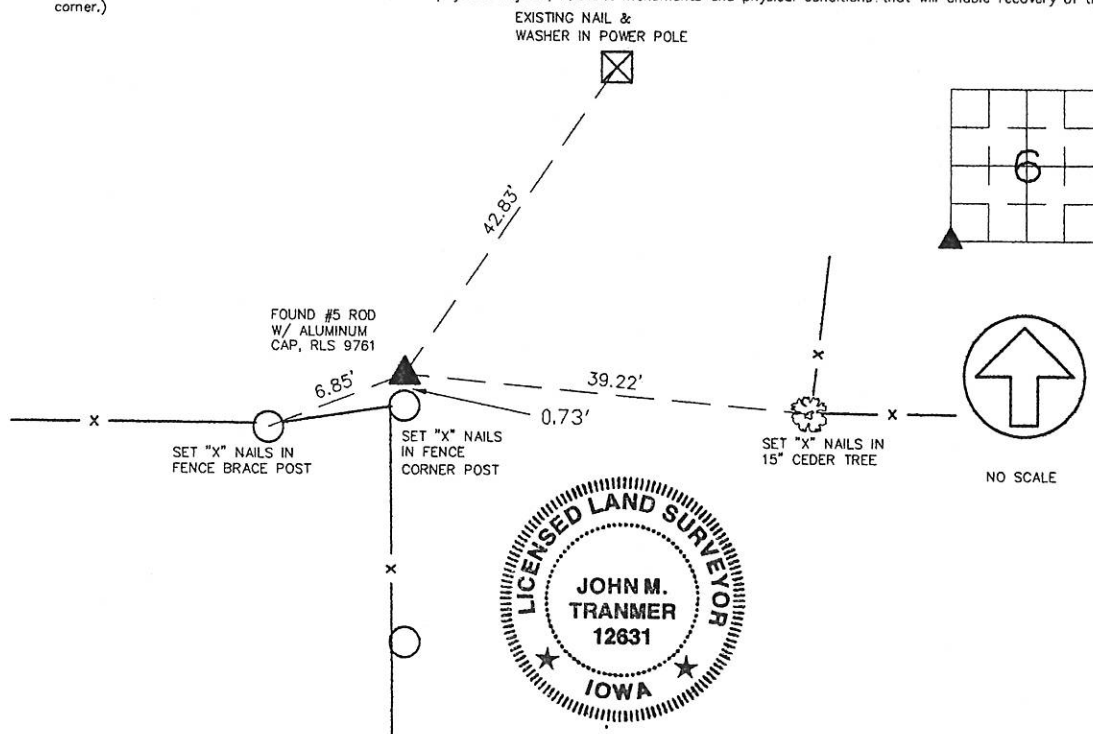
(Show reason for preparing this certificate, the evidence and detailed procedures used in establishing the corner positions and monumentation found or placed.)

Monument Description and Remarks: _____

SW CORNER, SECTION 6, T84N, R2E - FOUND 5/8" ROD W/ ALUMINUM CAP #9761

PLAN - VIEW

(Show a minimum of three reference ties to durable physical objects, relevant monuments and physical conditions that will enable recovery of the corner.)

I HEREBY CERTIFY THAT THE SURVEY WORK WAS COMPLETED AND THIS CERTIFICATE
WAS PREPARED BY ME OR UNDER MY DIRECT PERSONAL SUPERVISION AND THAT
I AM A DULY REGISTERED LAND SURVEYOR UNDER THE LAWS OF THE STATE OF IOWA.

JOHN M. TRANMER REG. NO. 12631

DATE: 2-26-98
MY REGISTRATION EXPIRES DECEMBER 31, 1998

LIST CORNERS TO BE INDEXED

CORNERS	SECTION	TWP	RANGE
SW CORNER	6	T84N	R2E



Iowa, Illinois, Wisconsin

ENGINEERS AND
SURVEYORS P.C.4155 Pennsylvania Ave.
Dubuque, Ia. 52002
(319) 556-2464Guttenberg, IA
Galena, IL
Cuba City, WI

MONUMENT RECORD

COUNTY: JACKSON
TOWNSHIP: SOUTH FORKDATE: 2-03-98
REVISED:FIELD
BOOK NO. 366PROJ.
NO. 977154INDEX
NO.

1998 FEB 27 A 11:16

SHIRLEY RITENOUR *No fee*
JACKSON COUNTY, IOWA
RECORDER

IIV ENGINEERS & SURVEYORS, P.C. 4155 PENNSYLVANIA AVE. DUBUQUE, IOWA 52002

UNITED STATES PUBLIC LAND SURVEY CORNER CERTIFICATE OF

LAND SURVEY MONUMENTS SITUATED IN SECTION 6, TOWNSHIP 84 NORTH, RANGE 2 EAST
OF THE FIFTH PRINCIPAL MERIDIAN, JACKSON COUNTY, IOWA.
PREVIOUSLY RECORDED IN _____ IN COUNTY RECORDER'S OFFICE.

(Show reason for preparing this certificate, the evidence and detailed procedures used in establishing the corner positions and monumentation found or placed.)

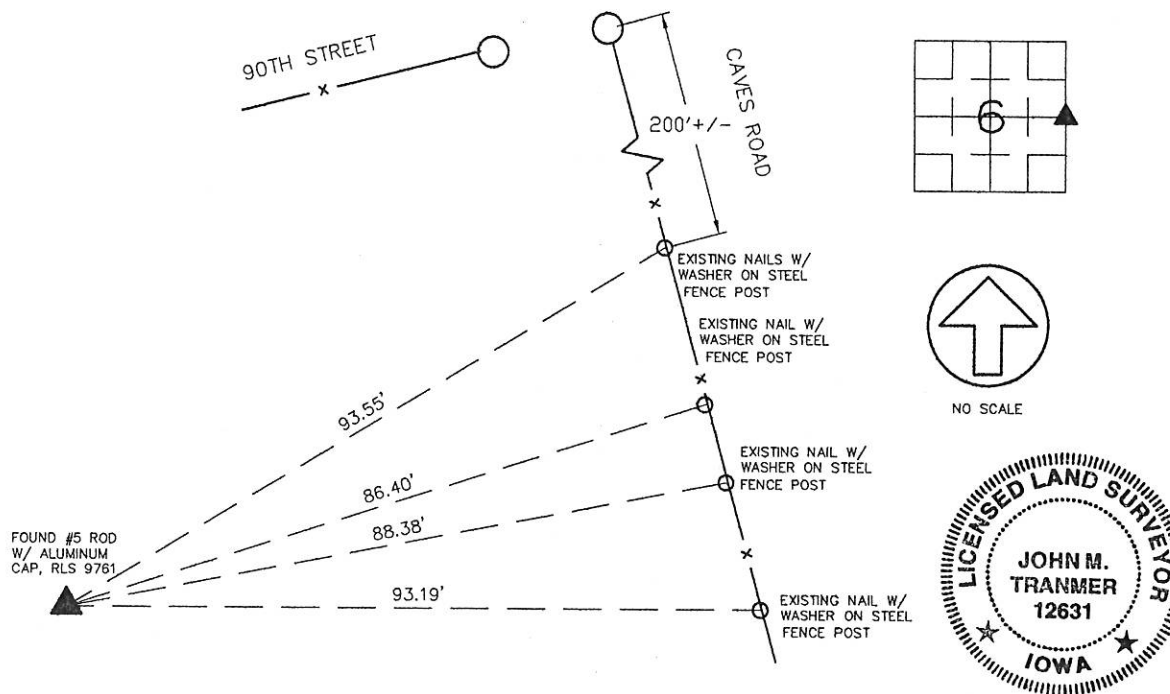
Monument Description and Remarks: _____

E 1/4 CORNER, SECTION 6, T84N, R2E - FOUND 5/8" ROD W/ ALUMINUM CAP #9761

MONUMENT LOCATED SOUTH OF 90TH STREET AND WEST OF CAVES ROAD.

PLAN - VIEW

(Show a minimum of three reference ties to durable physical objects, relevant monuments and physical conditions that will enable recovery of the corner.)



I HEREBY CERTIFY THAT THE SURVEY WORK WAS COMPLETED AND THIS CERTIFICATE WAS PREPARED BY ME OR UNDER MY DIRECT PERSONAL SUPERVISION AND THAT I AM A DULY REGISTERED LAND SURVEYOR UNDER THE LAWS OF THE STATE OF IOWA.

John M. Tranmer
JOHN M. TRANMER REG. NO. 12631

DATE: 2-26-98
MY REGISTRATION EXPIRES DECEMBER 31, 1998

LIST CORNERS TO BE INDEXED

CORNERS	SECTION	TWP	RANGE
E 1/4 CORNER	6	T84N	R2E



Iowa, Illinois, Wisconsin

ENGINEERS AND
SURVEYORS P.C.

4155 Pennsylvania Ave.
Dubuque, Ia. 52002
(319) 556-2464

Cullenberg, IA
Galena, IL
Cuba City, WI

MONUMENT RECORD

COUNTY: JACKSON
TOWNSHIP: SOUTH FORK

DATE: 2-03-98
REVISED:

FIELD
BOOK NO. 366

PROJ.
NO. 977154

INDEX
NO.

98 0645
FILE NO. 1 PAGE 337

1998 FEB 27 A 11:16

IIV ENGINEERS & SURVEYORS, P.C., 4155 PENNSYLVANIA AVE., DUBUQUE, IOWA, (319) 558-2464

SIMPLY RITE HOUR No fee
RECORDED
JACKSON COUNTY, IOWA

UNITED STATES PUBLIC LAND SURVEY CORNER CERTIFICATE OF

LAND SURVEY MONUMENTS SITUATED IN SECTION 6, TOWNSHIP 84 NORTH, RANGE 2 EAST
OF THE FIFTH PRINCIPAL MERIDIAN, JACKSON COUNTY, IOWA.
PREVIOUSLY RECORDED IN _____ IN COUNTY RECORDER'S OFFICE.

(Show reason for preparing this certificate, the evidence and detailed procedures used in establishing the corner positions and monumentation found or placed.)

Monument Description and Remarks:

TWO WITNESS CORNERS FOR SE CORNER, SECTION 6, T84N, R2E - SET 5/8" RODS W/CAP #12631

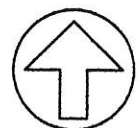
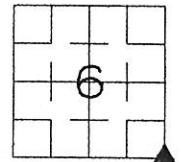
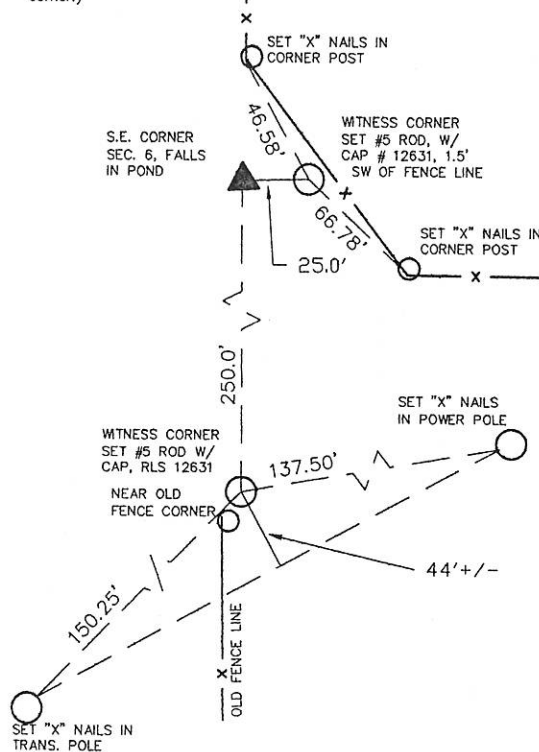
FIRST WITNESS CORNER SET 25 FEET EAST OF ESTABLISHED SE CORNER, SECTION 6 ON SECTION LINE

SECOND WITNESS CORNER SET 250 FEET SOUTH OF ESTABLISHED SE CORNER SECTION 6 ON SEC. LINE

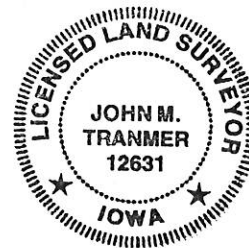
CORNER WAS ESTABLISHED FROM RECORDED PLATS.

PLAN - VIEW

(Show a minimum of three reference ties to durable physical objects, relevant monuments and physical conditions that will enable recovery of the corner.)



NO SCALE



I HEREBY CERTIFY THAT THE SURVEY WORK WAS COMPLETED AND THIS CERTIFICATE WAS PREPARED BY ME OR UNDER MY DIRECT PERSONAL SUPERVISION AND THAT I AM A DULY REGISTERED LAND SURVEYOR UNDER THE LAWS OF THE STATE OF IOWA.

John M. Tranmer
JOHN M. TRANMER REG. NO. 12631

DATE: 2-26-98
MY REGISTRATION EXPIRES DECEMBER 31, 1998

LIST CORNERS TO BE INDEXED

CORNERS	SECTION	TWP	RANGE
SE CORNER	6	T84N	R2E



Iowa, Illinois, Wisconsin

ENGINEERS AND
SURVEYORS P.C.

4155 Pennsylvania Ave.
Dubuque, Ia. 52002
(319) 558-2464

Guttenberg, IA
Galena, IL
Cuba City, WI

MONUMENT RECORD

COUNTY: JACKSON
TOWNSHIP: SOUTH FORK

DATE: 2-03-98
REVISED:

FIELD
BOOK NO. 366

PROJ.
NO. 977154

INDEX
NO.



Document 08-1215

Book 2 Page 614 Type 15 001 Pages 1

Date 3/26/2008 Time 11:10 AM

Rec Amt \$7.00

ARLENE SCHAUF, RECORDER/REGISTRAR
JACKSON COUNTY IOWA

Prepared by: SCHNEIDER Land Surveying and Planning, Inc. P.O. Box 128 Farley, Iowa 52046 563-744-3631

UNITED STATES PUBLIC LAND SURVEY CORNER CERTIFICATE OF

Land Survey Monuments situated in Section 6, Township 84 North, Range 2 East
of the Fifth Principal Meridian, Jackson County, Iowa.

Previously recorded (NONE OF RECORD)

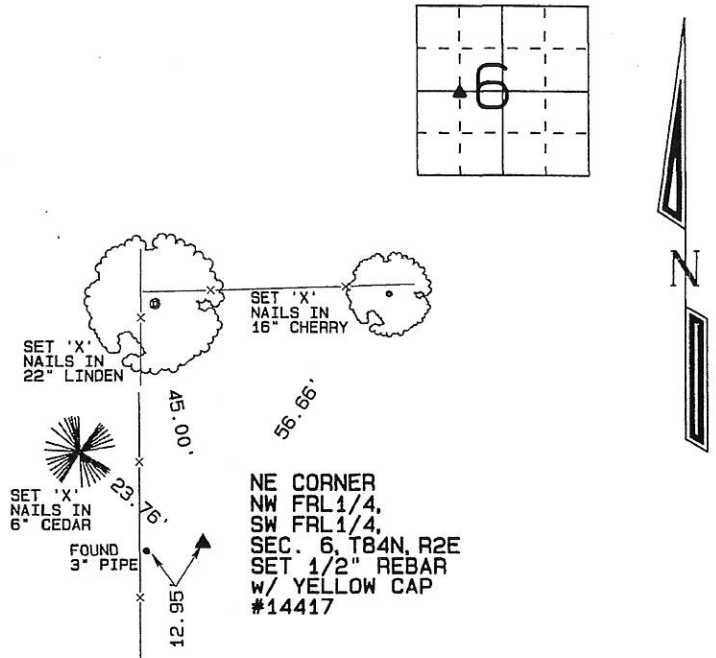
(BOOK, PAGE / INST. NO. / CABINET, SLIDE)

(Show reason for preparing this certificate, the evidence and detailed procedures used in establishing the corner positions and monumentation found or placed.)

Monument Description and Remarks: THE NE CORNER OF THE NW FRACTIONAL 1/4 OF THE SW FRACTIONAL 1/4 OF SECTION 6, T84N, R2E WAS ESTABLISHED AS SHOWN ON A PLAT OF SURVEY FILED AUGUST 3, 1987 IN BOOK 1-F, PAGE 120.

PLAN - VIEW

(Show a minimum of three reference ties to durable physical objects, relevant monuments and physical conditions that will enable recovery of the corner.)



I hereby certify that this land surveying document was prepared and the related survey work was performed by me or under my direct personal supervision and that I am a duly licensed land surveyor under the laws of the State of Iowa.

David P. Schneider 3/24/2008

David P. Schneider P.L.S. #14417 Date:

My license renewal date is December 31, 2009.

Pages or sheets covered by this seal: THIS SHEET ONLY

SCHNEIDER
Land Surveying & Planning, Inc.

P.O. Box 128 Farley, Iowa 52046
Ph. #563-744-3631 Fax#563-744-3629



List Corners to be Indexed

Corners	Section	Twp	Range
NE CORNER NW FRL1/4, SW FRL1/4	6	84N	2E

Book 2 Page 614

JOB NO. 995



Document 08-3037

Book 2 Page 627 Type 15 001 Pages 1

Date 8/12/2008 Time 11:39 AM

Rec Amt \$7.00

ARLENE SCHAUF, RECORDER/REGISTRAR
JACKSON COUNTY IOWA

Prepared by: SCHNEIDER Land Surveying and Planning, Inc. P.O. Box 128 Farley, Iowa 52046 563-744-3631

UNITED STATES PUBLIC LAND SURVEY CORNER CERTIFICATE OF

Land Survey Monuments situated in Section 6, Township 84 North, Range 2 East of the Fifth Principal Meridian, Jackson County, Iowa.

Previously recorded (NONE OF RECORD)

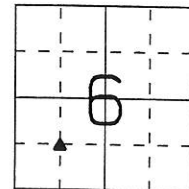
(BOOK, PAGE / INST. NO. / CABINET, SLIDE)

(Show reason for preparing this certificate, the evidence and detailed procedures used in establishing the corner positions and monumentation found or placed.)

Monument Description and Remarks: THE NE CORNER OF THE SW1/4 OF THE SW1/4 OF SECTION 6, T84N, R2E WAS ESTABLISHED AS SHOWN PLATS OF SURVEYS FILED IN BOOK 1-F, PAGE 11; BOOK 1-F, PAGE 120; BOOK 1-G, PAGE 94 AND BOOK 1-G, PAGE 97.

PLAN - VIEW

(Show a minimum of three reference ties to durable physical objects, relevant monuments and physical conditions that will enable recovery of the corner.)



FOUND T-BAR
w/ CAP #9761 • 11.41'▲

SET 'X'
NAILS IN
12" WALNUT

SET 'X'
NAILS IN
12" CEDAR

NE CORNER
SW1/4, SW1/4,
SEC. 6, T84N, R2E
SET 1/2" REBAR
w/ YELLOW CAP
#14417

SET 60d
NAIL IN
CLIP OF
T-POST

I hereby certify that this land surveying document was prepared and the related survey work was performed by me or under my direct personal supervision and that I am a duly licensed Land Surveyor under the laws of the State of Iowa.

David P. Schneider P.L.S. #14417

Date: 8/11/2008

My license renewal date is December 31, 2009.

Pages or sheets covered by this seal: THIS SHEET ONLY

SCHNEIDER

Land Surveying & Planning, Inc.

P.O. Box 128 Farley, Iowa 52046
Ph. #563-744-3631 Fax #563-744-3629



List Corners to be Indexed

Corners	Section	Twp	Range
NE CORNER SW1/4, SW1/4	6	84N	2E

Book 2 Page 627

JOB NO. 234