

Hand-drawn engineering diagram of a road layout, likely a plan view, showing vertical and horizontal curves. The diagram includes the following data:

- Vertical Curve Data:**
 - Point (1) to (2): $118.8'$
 - Point (2) to (3): $3082.2'$
 - Point (3) to (4): $2626.0'$
 - Point (4) to (5): $2685.6'$
 - Point (5) to (6): $2701.7'$
- Horizontal Curve Data:**
 - Point (A) to (B): $\Delta = 19^\circ 37' \text{ RT.}$
 - Point (B) to (C): $\Delta = 28^\circ 13' \text{ LT.}$
 - Point (C) to (6): $\Delta = 72^\circ 06' \text{ LT.}$
- Stationing and Other Labels:**
 - P.I. STA. $38+85.6$
 - P.I. STA. $48+70.83$
 - P.I. STA. $62+86.6$
 - P.I. STA. $79+42.53$
 - Angle $\Delta = 24^\circ 30' \text{ RT.}$ near point (4)
 - Point (1) is labeled with (1) and (3)
 - Point (2) is labeled with (2)
 - Point (3) is labeled with (3)
 - Point (4) is labeled with (4)
 - Point (5) is labeled with (5)
 - Point (6) is labeled with (6)
 - Point (7) is labeled with (7)

SURVEY
R-2-E

MADE BY

R.L.S. NO. 2051
F-1117

SEPT. - OCT. 1959

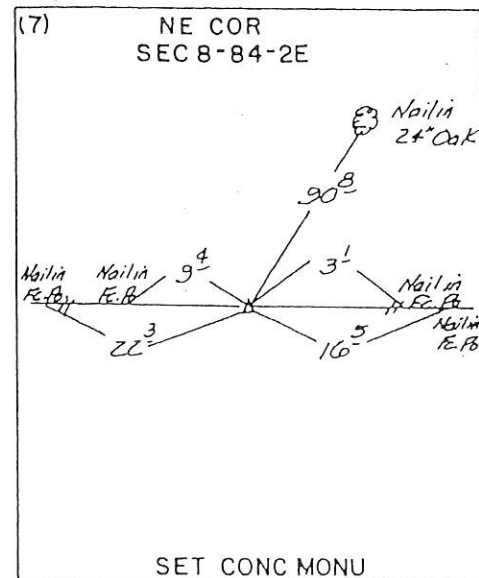
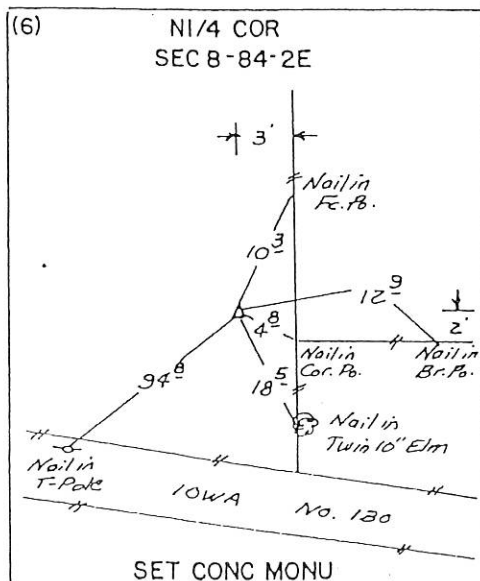
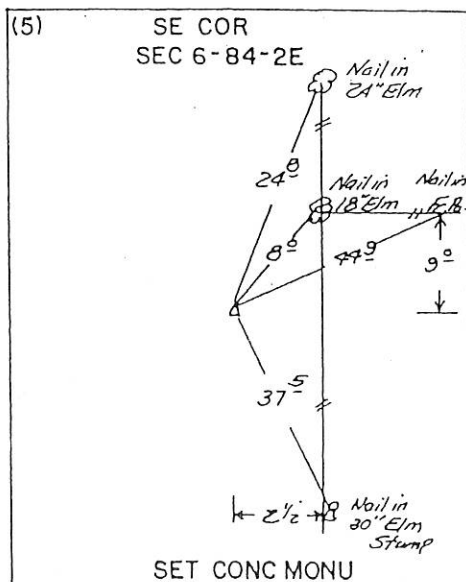
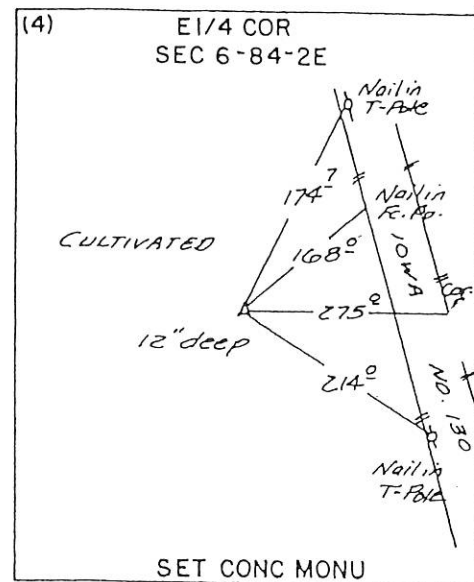
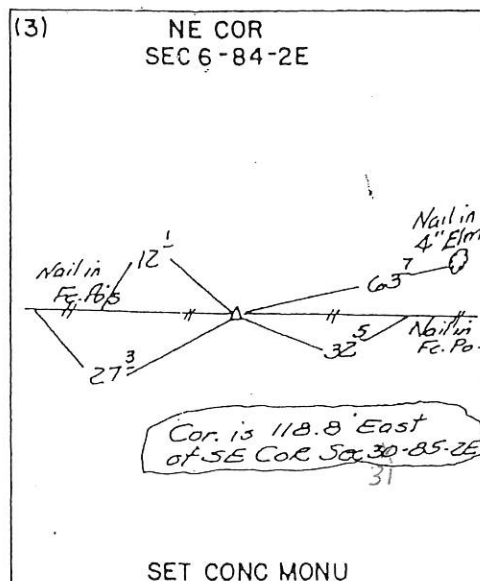
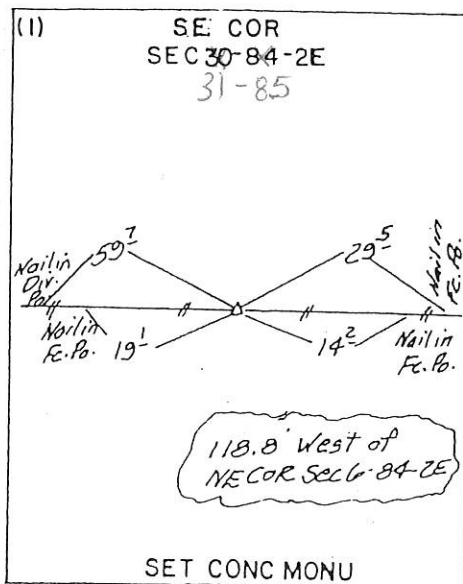
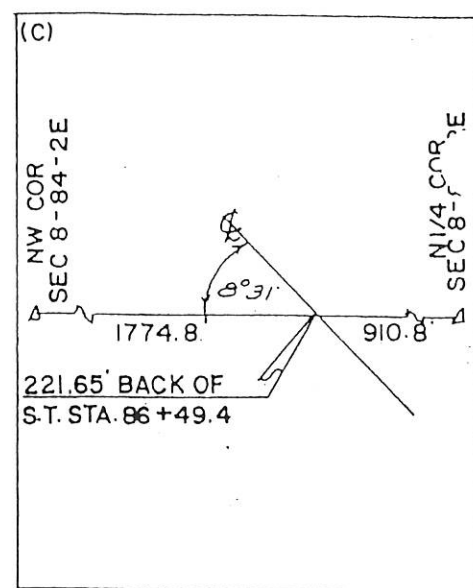
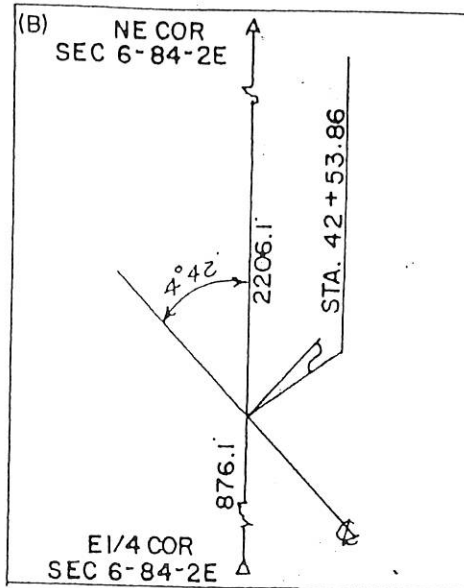
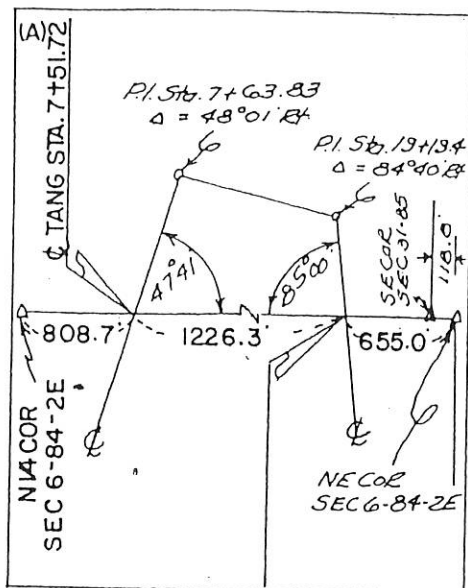
FOR COMPLETE INFORMATION ON THIS SURVEY, SEE FIELD NOTES ON FILE IN AMES OFFICE.

I, HEREBY CERTIFY THAT THIS PLAT IS A TRUE REPRESENTATION OF A SURVEY MADE BY ME, ASSISTED BY JAMES D. FRANKLIN, R. F. POPELKA, R. H. JANS, W. M. MYERS, F. A. NORTON, L. R. MC GUIRE, R. P. VAN HORBECK, ELVIN K. IRONS AND R. MCCREA, ALL DULY SWORN, AND IS CORRECT TO THE BEST OF MY KNOWLEDGE.

SIGNED: December 8, 1959

John D. Franklin
JOHN D. FRANKLIN R.L.S. NO. 2051





FILE NO. **02.0543**
BOOK **1** PAGE **504**

02 FEB -1 AM 10:43

PREPARED BY: EGGER ENGINEERING AND LAND SURVEYING, P.C.
2395 TECH DRIVE SUITE 8 BETTENDORF, IOWA 52722

PHYLLIS M. GERLACH
JACKSON COUNTY, IOWA
RECORDER
#6.00

UNITED STATES PUBLIC LAND SURVEY CORNER CERTIFICATE
OF

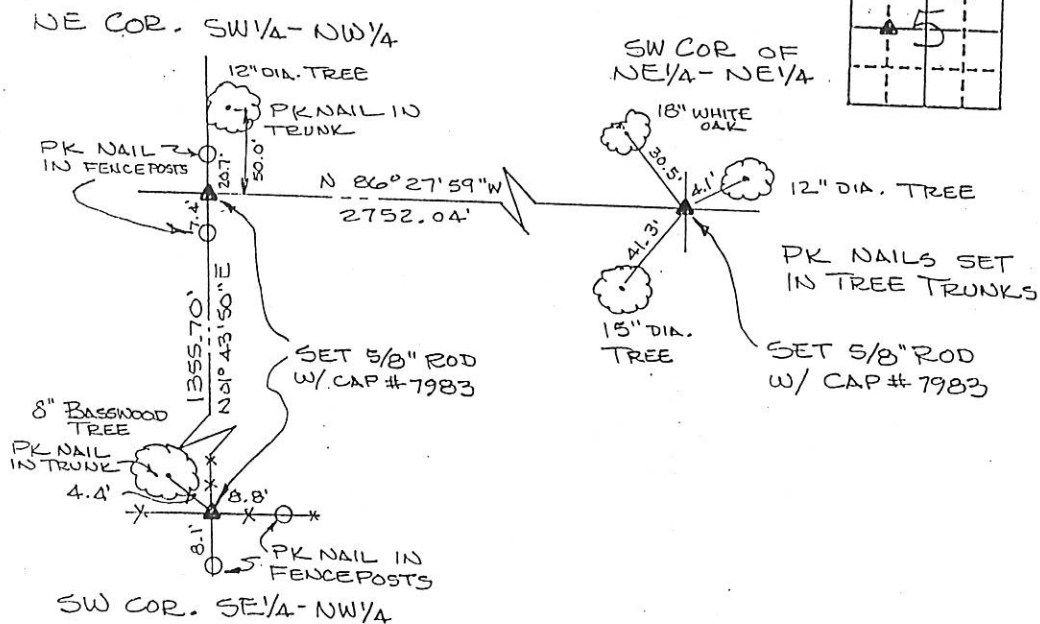
Land Survey Monuments situated in Section 5, Township 84N, Range 2E, of the Fifth Principal Meridian, JACKSON County, Iowa. Previously recorded in NOT PREVIOUSLY RECORDED in County Recorder's Office.

(Show reason for preparing this certificate, the evidence and detailed procedures used in establishing the corner positions and monumentation found or placed.)

Monument Description and Remarks: SW COR OF SE 1/4 - NW 1/4 WAS SET AT FENCE INTERSECTION.
THE NE COR SW 1/4 - NW 1/4 WAS PLACED ON THE W. LINE OF E 1/2 OF
THE NW 1/4 AT A DISTANCE OF 1355.70' NORTH OF THE SO. LINE OF THE E 1/2.

PLAN - VIEW

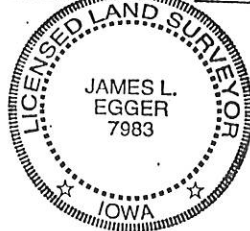
(Show a minimum of three reference ties to durable physical object, relevant monuments and physical conditions that will enable recovery of the corner.)



I hereby certify that the survey work was completed and this certificate was prepared by me or under my direct supervision and that I am a duly registered land surveyor under the laws of the state of Iowa.

Signature: James L. Egger
James L. Egger L.S.

Date: Jan 29, 2002 Reg. No. 7983



SEAL

Corners	Section	Typ	Range
NE COR SW 1/4 - NW 1/4	5	84N	2E
SW COR SE 1/4 - NW 1/4	5	84N	2E
SW COR NE 1/4 - NE 1/4	5	84N	2E



Document 14-1654

Book 3 Page 136 Type 15 001 Pages 1
Date 5/23/2014 Time 11:48 AM
Rec Amt \$7.00

ARLENE SCHAUF, RECORDER/REGISTRAR
JACKSON COUNTY IOWA

PREPARED BY: MICHAEL J. WEBER, WEBER SURVEYING, LLC, 26789 46TH AVE, BERNARD, IA 52032 (563) 879-4173

UNITED STATES PUBLIC LAND SURVEY CORNER CERTIFICATE OF

LAND SURVEY MONUMENTS SITUATED IN SECTION 5, TOWNSHIP 84 NORTH, RANGE 2 EAST
OF THE FIFTH PRINCIPAL MERIDIAN, JACKSON COUNTY, IOWA.
PREVIOUSLY RECORDED NONE

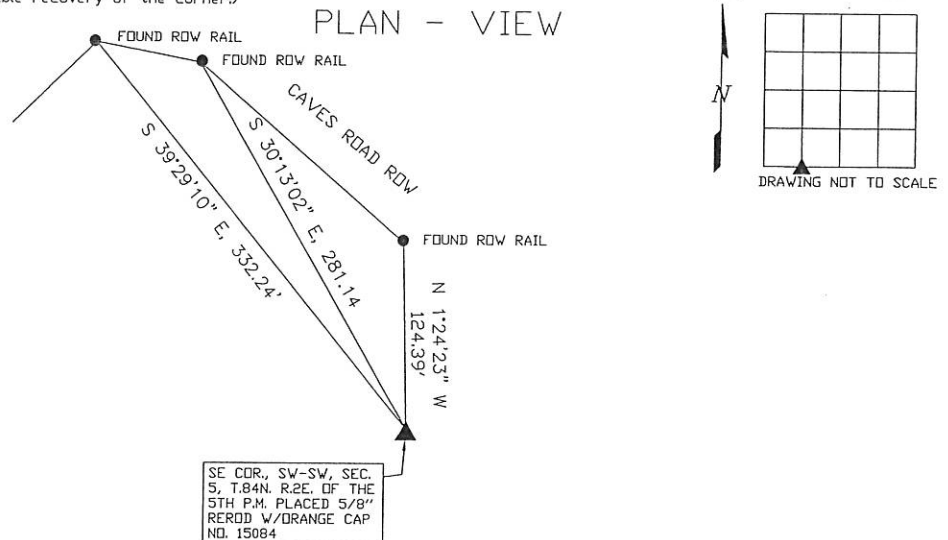
(book, page, document number, etc.)

(Show reason for preparing this certificate, the evidence and detailed procedures used in establishing the corner positions and nonumentation found or placed.)

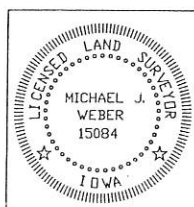
Monument Description and Remarks:

-SE COR., SW-SW, SEC. 5, T.84N. R.2E. OF THE 5TH P.M. PLACED 5/8" REROD W/ORANGE
CAP NO. 15084. ESTABLISHED CORNER AT THE INTERSECTION OF THE LINE BETWEEN THE
SW CORNER AND SOUTH 1/4 CORNER OF SECTION 5 WITH THE WEST LINE OF LOT 3 AS
SHOWN IN PLAT OF SURVEY IN BOOK 1-C PAGE 21.

(Show a minimum of three reference ties to durable physical objects, relevant monuments and physical conditions that will enable recovery of the corner.)



DWG. NO. 14006-HENRY-PARCEL-D



I HEREBY CERTIFY THAT THIS LAND SURVEYING DOCUMENT WAS
PREPARED AND THE RELATED SURVEY WORK WAS PERFORMED BY ME OR
UNDER MY DIRECT PERSONAL SUPERVISION AND THAT I AM A DULY
LICENSED LAND SURVEYOR UNDER THE LAWS OF THE STATE OF IOWA.

Michael J. Weber *Apr 12, 2014*
(DATE)
MICHAEL J. WEBER
LICENSE NUMBER 15084
MY LICENSE RENEWAL DATE IS DECEMBER 31, 2015

SHEETS COVERED BY THIS SEAL 1 THIS SHEET

List Corners to be Indexed
Corner Sec Twp Range
SE COR., SW-SW 5 84N 2E



Document 18-2884

Book 2018 Page 2884 Type 15 001 Pages 1
Date 8/22/2018 Time 2:08 PM
Rec Amt \$7.00

ARLENE SCHAUF, RECORDER/REGISTRAR
JACKSON COUNTY IOWA

PREPARED BY: MICHAEL J. WEBER, WEBER SURVEYING, LLC, 26789 46TH AVE, BERNARD, IA 52032 (563) 879-4173

UNITED STATES PUBLIC LAND SURVEY CORNER CERTIFICATE OF

LAND SURVEY MONUMENTS SITUATED IN SECTION 5, TOWNSHIP 84 NORTH, RANGE 2 EAST
OF THE FIFTH PRINCIPAL MERIDIAN, JACKSON COUNTY, IOWA.

PREVIOUSLY RECORDED BOOK 3 PAGE 135 & DOC. NO. 14-1652

(book, page, document number, etc.)

(Show reason for preparing this certificate, the evidence and detailed procedures used in establishing the corner positions and monumentation found or placed.)

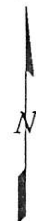
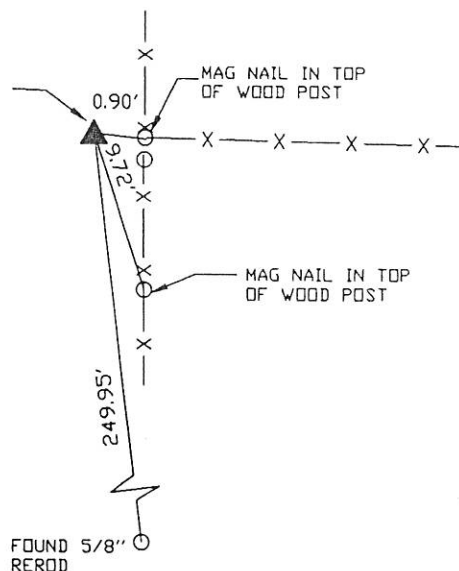
Monument Description and Remarks:

SW COR., SEC. 5, T.84N. R.2E. OF THE 5TH P.M. PLACE 5/8" DIA. REROD W/ORANGE CAP NO. 15084.
PREVIOUSLY RECORDED IN SEC. COR. CERT. BOOK 1 PAGE 337, DOC. NO. 98-0645 NOTED CORNER FALLS
IN POND. POND HAS BEEN REMOVED. ESTABLISHED TIES

(Show a minimum of three reference ties to durable physical objects, relevant monuments and physical conditions that will enable recovery of the corner.)

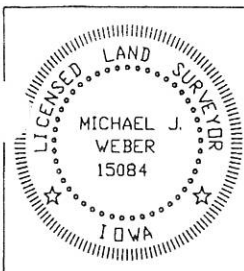
PLAN - VIEW

SW COR., SEC. 5, T.84N. R.2E.
OF THE 5TH P.M. PLACE 5/8"
DIA. REROD W/ORANGE CAP
NO. 15084.



DRAWING NOT TO SCALE

DWG. NO. 18104-HENRY



I HEREBY CERTIFY THAT THIS LAND SURVEYING DOCUMENT WAS
PREPARED AND THE RELATED SURVEY WORK WAS PERFORMED BY ME OR
UNDER MY DIRECT PERSONAL SUPERVISION AND THAT I AM A DULY
LICENSED LAND SURVEYOR UNDER THE LAWS OF THE STATE OF IOWA.

Michael J. Weber
MICHAEL J. WEBER

LICENSE NUMBER 15084

MY LICENSE RENEWAL DATE IS DECEMBER 31, 2019

SHEETS COVERED BY THIS SEAL : THIS SHEET

Corner	Sec	Twp	Range
SW COR	5	84N	2E