

## UNITED STATES PUBLIC LAND SURVEY CORNER CERTIFICATE

OF

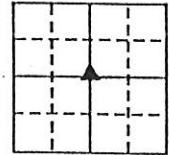
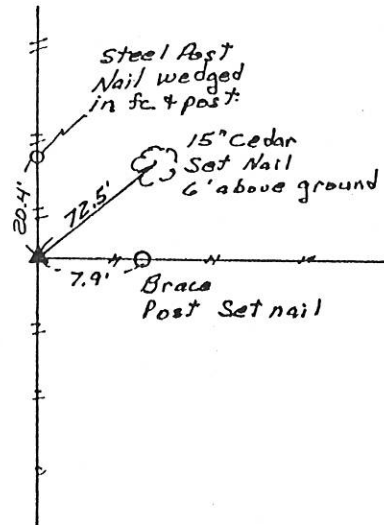
Land Survey Monuments situated in Section 4, Township 84 N, Range 2 E, of the Fifth Principal Meridian, Jackson Co. County, Iowa.  
 Previously recorded in not recorded in County Recorder's Office.  
 (book, page, document number, etc.)

(Show reason for preparing this certificate, the evidence and detailed procedures used in establishing the corner positions and monumentation found or placed.)

Monument Description and Remarks: Set 5/8" Rod w/cap No. 2869 at intersection of N-S fence & E-W Property line fences

## PLAN - VIEW

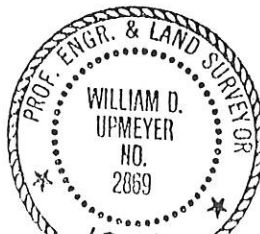
(Show a minimum of three reference ties to durable physical objects, relevant monuments and physical conditions that will enable recovery of the corner.)



I hereby certify that the survey work was completed and this certificate was prepared by me or under my direct personal supervision and that I am a duly registered land surveyor under the laws of the state of Iowa.

Signature: William D. Upmeyer  
 Name typed or printed: William D. Upmeyer

Date: 9-3-97 Reg. No. 2869



SEAL

Corners	List Corners to be Indexed Section	Twp	Range
Center	4	84 N	R2 E

97 3543  
 BOOK 1 PAGE 329

1997 NOV 21 A 10: 29

SINGLE INTERIOR  
 JACKSON COUNTY, IOWA  
 RECORDER fee 6.00

FILE NO. 02.0544  
BOOK PAGE 505

02 FEB -1 AM 10:43

PREPARED BY: EGGER ENGINEERING AND LAND SURVEYING, P.C.  
2395 TECH DRIVE SUITE 8 BETTENDORF, IOWA 52722

PHYLLIS M. GERLACH  
JACKSON COUNTY, IOWA  
RECORDER

UNITED STATES PUBLIC LAND SURVEY CORNER CERTIFICATE  
OF

Fee \$6.00

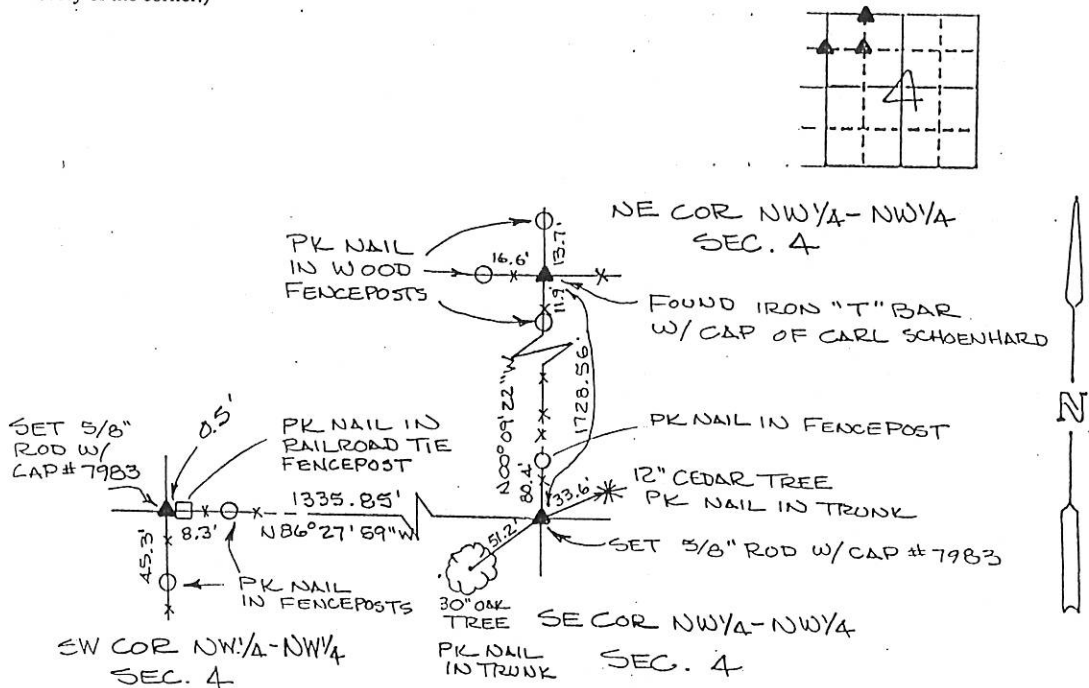
Land Survey Monuments situated in Section 4, Township 84N, Range 2E, of the Fifth Principal Meridian, JACKSON County, Iowa. Previously recorded in NOT PREVIOUSLY RECORDED (book, page, document number, etc.)

(Show reason for preparing this certificate, the evidence and detailed procedures used in establishing the corner positions and monumentation found or placed.)

Monument Description and Remarks: WE FOUND THE "T" BAR & CAP SET BY CARL SCHOENHARDT AT THE NE COR. OF NW 1/4 - NW 1/4 SEC. 4 AND TIED IT OFF.  
WE SET THE SE COR. OF NW 1/4 - NW 1/4 OF SEC. 4 BY AN INTERSECTION OF THE SOUTH & EAST LINE OF THIS QUARTER-QUARTER.  
WE SET THE SW COR. OF NW 1/4 - NW 1/4 SEC. 4 BY AN INTERSECTION OF THE SOUTH AND WEST LINE OF THIS QUARTER-QUARTER.

PLAN - VIEW

(Show a minimum of three reference ties to durable physical object, relevant monuments and physical conditions that will enable recovery of the corner.)



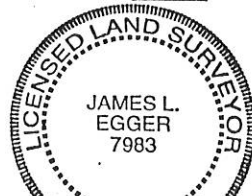
I hereby certify that the survey work was completed and this certificate was prepared by me or under my direct supervision and that I am a duly registered land surveyor under the laws of the state of Iowa.

Signature: James L. Egger  
James L. Egger L.S.

Date: JAN. 25, 02 Reg. No. 7983

Corners	List Corners to be Indexed	Section	Twp	Range
SW OF NW 1/4 - NW 1/4	4	84N	2E	
SE OF NW 1/4 - NW 1/4	4	84N	2E	
NE OF NW 1/4 - NW 1/4	4	84N	2E	

SEAL





Document 06-3901

Book 2 Page 488 Type 15 001 Pages 1  
Date 10/06/2006 Time 3:10 PM  
Rec Amt \$7.00

ARLENE SCHAUF, RECORDER  
JACKSON COUNTY IOWA

Preparer's Name: Paul C. Brashaw Address: 4413 West Stagecoach Trail Galena, Ill. Telephone: 777-1172

SLSI 9-94

# UNITED STATES PUBLIC LAND SURVEY CORNER CERTIFICATE

OF

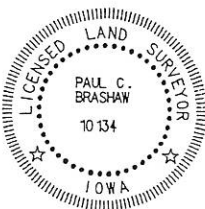
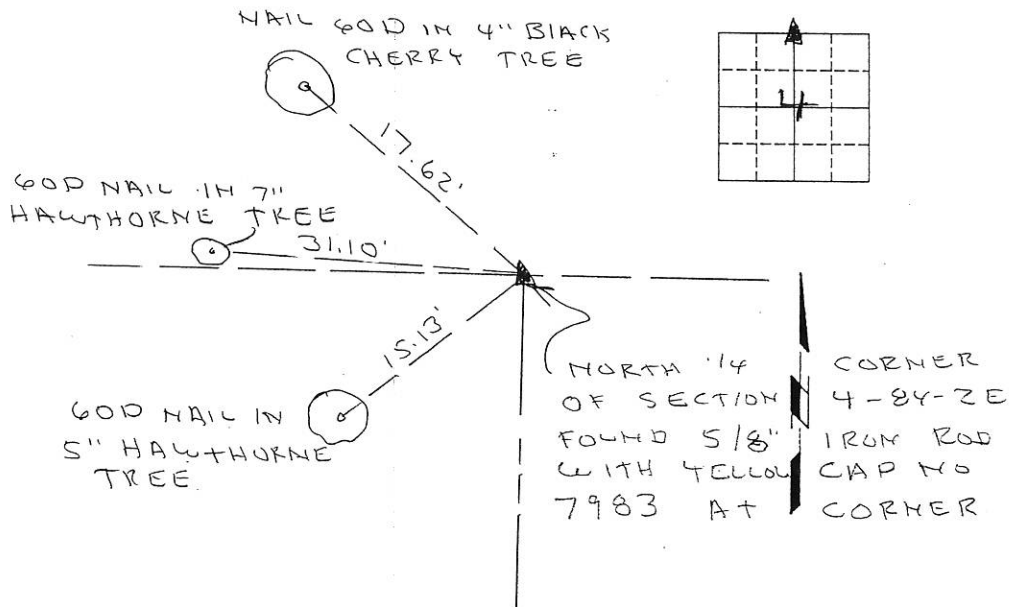
Land Survey Monuments situated in Section 4, Township 84 NORTH, Range 2 EAST, of the Fifth Principal Meridian, JACKSON County, Iowa.  
Previously recorded in \_\_\_\_\_ in County Recorder's Office.  
(book, page, document number, etc.)

(Show reason for preparing this certificate, the evidence and detailed procedures used in establishing the corner positions and monumentation found or placed.)

Monument Description and Remarks: NORTH 1/4 CORNER OF SECTION 4  
T84N, R2E. FOUND 5/8" IRON ROD WITH YELLOW  
CAP NO. 7983 AT ACCEPTED CORNER LOCATION  
AS SHOWN ON PLAT OF SURVEY RECORDED IN BOOK  
1-G, PAGE 52

## PLAN - VIEW

(Show a minimum of three reference ties to durable physical objects, relevant monuments and physical conditions that will enable recovery of the corner.)



I HEREBY CERTIFY THAT THIS LAND SURVEYING DOCUMENT WAS PREPARED AND THE RELATED SURVEY WORK WAS PERFORMED BY ME OR UNDER MY DIRECT PERSONAL SUPERVISION AND THAT I AM A FULLY LICENSED LAND SURVEYOR UNDER THE LAWS OF THE STATE OF IOWA.

Paul C. Brashaw Oct 6, 2006  
PAUL C. BRASHAW (DATE)

LICENSE NUMBER 10134

MY LICENSE RENEWAL DATE IS DECEMBER 31, 2006

List Corners to be Indexed  
Corners Section Twp Range  
H 1/4 CORNER 4 84 2E

MONUMENT RECORD		
COUNTY: <u>JACKSON</u>		
TOWNSHIP: <u>SOUTH FORK</u>		
DATE PLOTTED:	FIELD BOOK #	DRAWING
DATE REVISED:	PAGE #	#

Book 2 Page 488



Document 07-2605

Book 2 Page 567 Type 15 001 Pages 1  
Date 6/04/2007 Time 11:34 AM  
Rec Amt \$7.00

ARLENE SCHAUF, RECORDER  
JACKSON COUNTY IOWA

Prepared by Egger Engineering and Land  
Surveying, PC 2395 Tech Drive Suite 2  
Bettendorf, Iowa 52722

### UNITED STATES PUBLIC LAND SURVEY CORNER CERTIFICATE OF

Land Survey Monuments situated in Section 4, Township 84, Range 2E, of the Fifth Principal Meridian, JACKSON County, Iowa. Previously recorded in COUNTY ENGR'S OFFICE in County Recorder's Office.

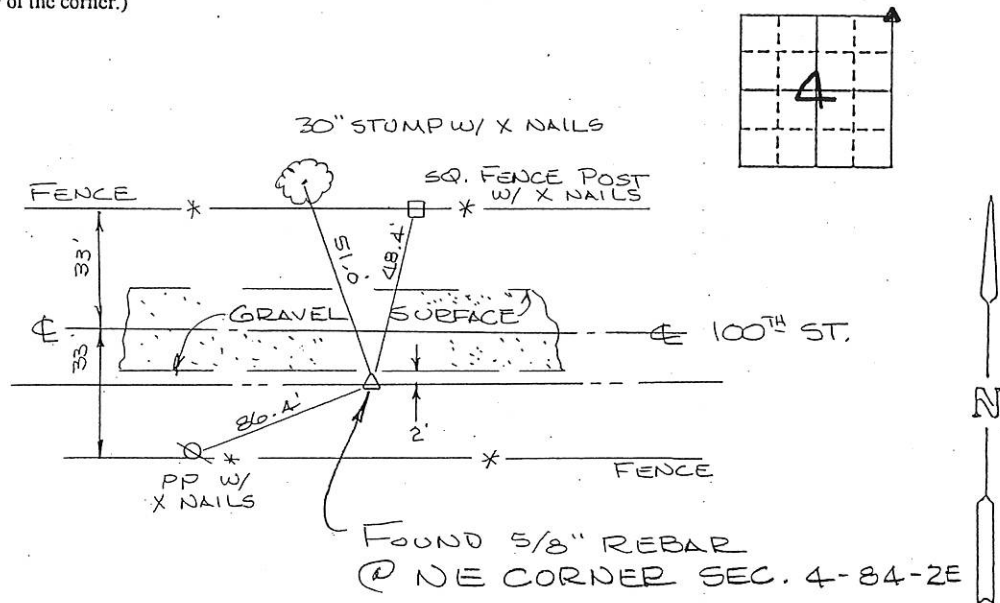
(book, page, document number, etc.)

(Show reason for preparing this certificate, the evidence and detailed procedures used in establishing the corner positions and monumentation found or placed.)

Monument Description and Remarks: THE FORMER TIES WERE OBLITERATED  
WE MEASURED TO NEW TIES SET ON 3  
REFERENCE POINTS.

#### PLAN - VIEW

(Show a minimum of three reference ties to durable physical object, relevant monuments and physical conditions that will enable recovery of the corner.)

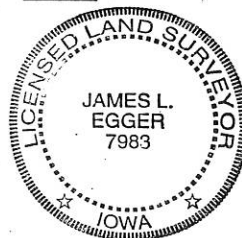


I hereby certify that the survey work was completed and this certificate was prepared by me or under my direct supervision and that I am a duly registered land surveyor under the laws of the state of Iowa.

Signature: James L. Egger  
James L. Egger L.S.

Date: MAY 30, 2007 Reg. No. 7983

SEAL



Corners	Section	Twp	Range
NE	4	84N	2E

Book 2 Page 567



Document 12-1898

Book 3 Page 47 Type 15 001 Pages 1

Date 5/07/2012 Time 9:17 AM

Rec Amt \$7.00

ARLENE SCHAUF, RECORDER/REGISTRAR  
JACKSON COUNTY IOWA

Prepared by Wm. Burger Land Surveyor 510 3rd Street West Court, Worthington, Iowa Phone 563 - 855 2028

UNITED STATES PUBLIC LAND SURVEY CORNER CERTIFICATE

Land Survey Monuments situated in Section 4, Township 84N, Range 2E, of the Fifth Principal Meridian, Jackson County, Iowa. Previously recorded in SEE NOTE in the Office of the County Recorder

Monument Description and Remarks:

N1/4 CORNER - FD. 5/8" IRON ROD W/YELLOW LS CAP #7983

NE CORNER - FD. 5/8" IRON ROD W/ NO LS CAP

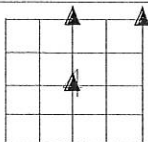
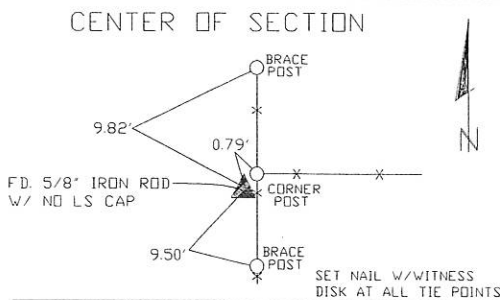
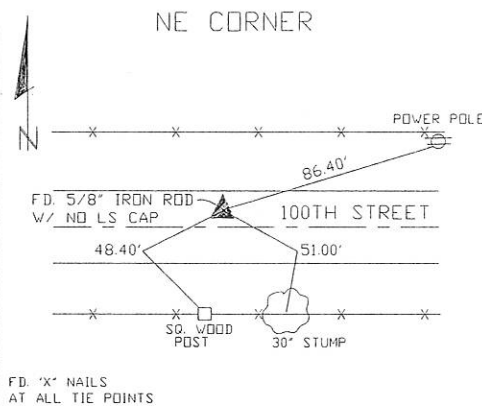
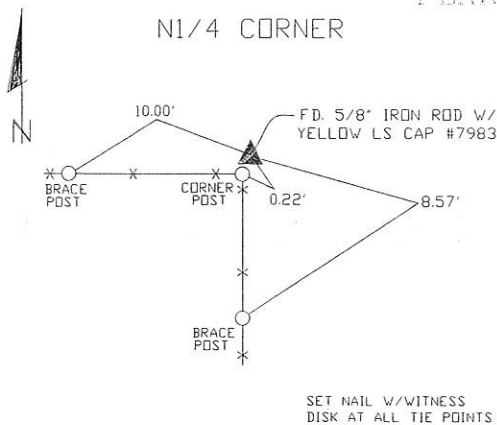
CENTER OF SECTION - FD. 5/8" IRON ROD W/ NO LS CAP

NOTE: THE N1/4 CORNER WAS PREVIOUSLY TIED IN BOOK 2, PAGE 488 (DOCUMENT 06-3901).

THE NE CORNER WAS PREVIOUSLY TIED IN BOOK 2, PAGE 567 (DOCUMENT 07-2605).

THE CENTER OF SECTION WAS PREVIOUSLY TIED IN BOOK 1, PAGE 329 (FILE NO. 97 3543).

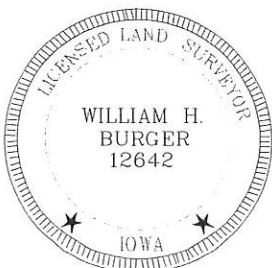
PLAN VIEW



SEC. 4 TWP. 84N RANGE 2E

CORNERS TO BE INDEXED

N1/4 CORNER	4	84N	2E
NE CORNER	4	84N	2E
CENTER OF SECTION	4	84N	2E



I hereby certify that this land surveying document was prepared and related survey work was performed by me or under my direct personal supervision and that I am a duly licensed Land Surveyor under the laws of the State of Iowa.

William H. Burger 5/12/12  
William H. Burger Date

License number 12642

My license renewal date is December 31, 2012

Pages or Sheets covered by this seal: Sheet 1 of 1



Document 12-1899

Book 3 Page 48 Type 15 001 Pages 1

Date 5/07/2012 Time 9:17 AM

Rec Amt \$7.00

ARLENE SCHAUF, RECORDER/REGISTRAR  
JACKSON COUNTY IOWA

Prepared by Wm. Burger Land Surveyor

510 3rd Street West Court, Worthington, Iowa

Phone 563 - 855 2029

# UNITED STATES PUBLIC LAND SURVEY CORNER CERTIFICATE

Land Survey Monuments situated in Section 4, Township 84N, Range 2E, of the Fifth Principal Meridian, Jackson County, Iowa. Previously recorded in N/A in the Office of the County Recorder

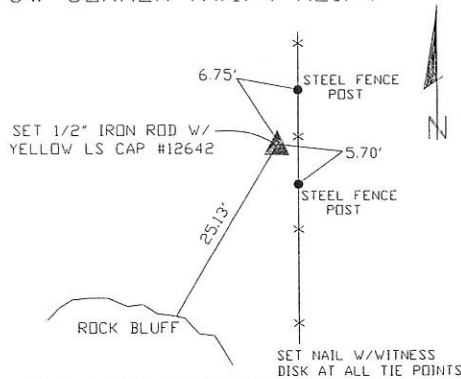
## Monument Description and Remarks:

SW CORNER NW1/4 NE1/4 - SET 1/2" IRON ROD W/YELLOW LS CAP #12642 - SET ON LINE BETWEEN THE CENTER OF SECTION AND THE NW1/4 CORNER AND SET 1320.00' NORTH OF THE CENTER OF SECTION ACCORDING TO THE ORIGINAL NOTES. THIS FIT THE FENCELINE TO THE EAST THE BEST.

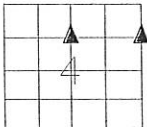
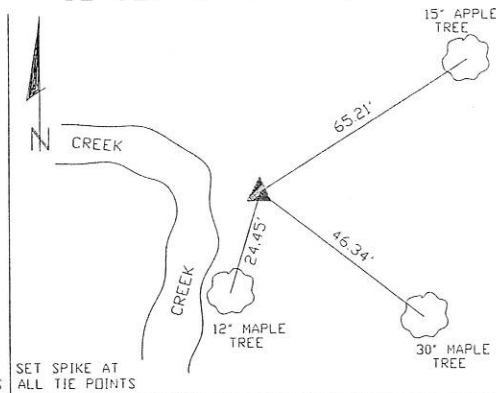
SE CORNER NE1/4 NE1/4 - SET 1/2" IRON ROD W/YELLOW LS CAP #12642 - SET ON LINE BETWEEN THE SE CORNER AND THE NE CORNER AND SET 1320.00' NORTH OF THE E1/4 CORNER ACCORDING TO THE ORIGINAL NOTES. THIS FIT THE FENCELINE TO THE WEST THE BEST.

## PLAN VIEW

SW CORNER NW1/4 NE1/4



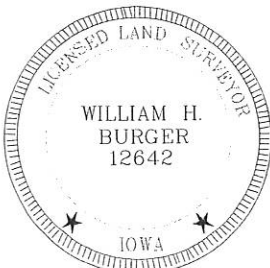
SE CORNER NE1/4 NE1/4



SEC. 4 TWP. 84N RANGE 2E

## CORNERS TO BE INDEXED

SW CORNER NW1/4 NE1/4	4	84N	2E
SE CORNER NE1/4 NE1/4	4	84N	2E



I hereby certify that this land surveying document was prepared and related survey work was performed by me or under my direct personal supervision and that I am a duly licensed Land Surveyor under the laws of the State of Iowa.

*William H. Burger* 4/12/12  
William H. Burger Date

License number 12642

My license renewal date is December 31, 2012

Pages or Sheets covered by this seal: Sheet 1 of 1



Document 12-5370

Book 3 Page 72 Type 15 001 Pages 1

Date 12/18/2012 Time 3:07 PM

Rec Amt \$7.00

ARLENE SCHAUF, RECORDER/REGISTRAR  
JACKSON COUNTY IOWA

PREPARED BY: MICHAEL J. WEBER, WEBER SURVEYING, LLC, 26789 46TH AVE, BERNARD, IA 52032 (563) 879-4173

# UNITED STATES PUBLIC LAND SURVEY CORNER CERTIFICATE OF

LAND SURVEY MONUMENTS SITUATED IN SECTION 4, TOWNSHIP 84 NORTH, RANGE 2 EAST  
OF THE FIFTH PRINCIPAL MERIDIAN, JACKSON COUNTY, IOWA.  
PREVIOUSLY RECORDED BOOK 1 PAGE 505, DOC. NO. 02-0544

(book, page, document number, etc.)

(Show reason for preparing this certificate, the evidence and detailed procedures used in establishing the corner positions and monumentation found or placed.)

Monument Description and Remarks:

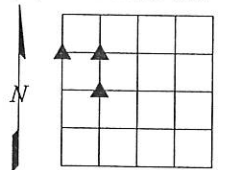
-NW COR. SW-NW, SEC. 4, T.84N. R.2E. OF THE 5TH P.M. FOUND 5/8" REROD W/YELLOW CAP NO. 7983  
PREVIOUSLY RECORDED IN BOOK 1 PAGE 505, DOC. NO. 02-0544, ESTABLISHED NEW TIES.

-NE COR. SW-NW, SEC. 4, T.84N. R.2E. OF THE 5TH P.M. FOUND 5/8" REROD W/YELLOW CAP NO. 7983  
PREVIOUSLY RECORDED IN BOOK 1 PAGE 505, DOC. NO. 02-0544, ESTABLISHED NEW TIES.

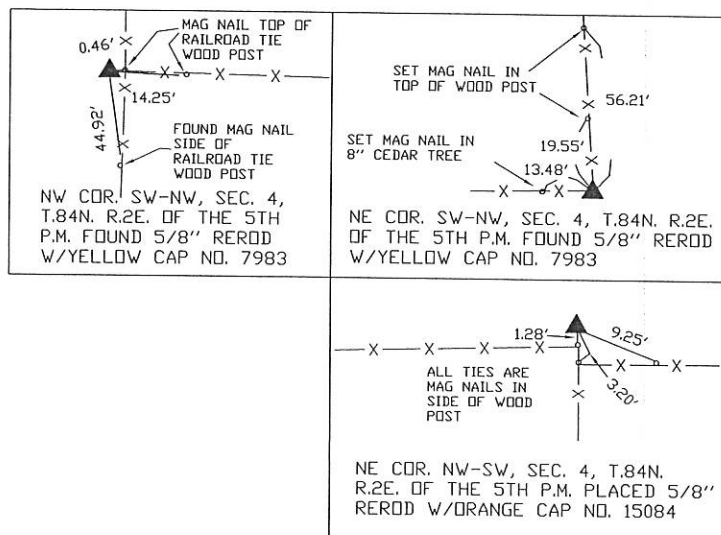
-NE COR. NW-SW, SEC. 4, T.84N. R.2E. OF THE 5TH P.M. PLACED 5/8" REROD W/ORANGE CAP NO. 15084  
ESTABLISHED CORNER AT THE INTERSECTION OF THE LINE BETWEEN THE CENTER AND WEST 1/4 OF  
CORNER SEC. 4 WITH THE OCCUPATION FENCELINE RUNNING SOUTH.

(Show a minimum of three reference ties to durable physical objects, relevant monuments and physical conditions that will enable recovery of the corner.)

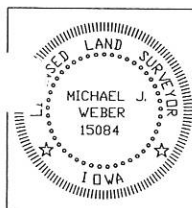
## PLAN - VIEW



DRAWING NOT TO SCALE



DWG. NO.  
2011\WUESTENBERG\ABLEN



I HEREBY CERTIFY THAT THIS LAND SURVEYING DOCUMENT WAS  
PREPARED AND THE RELATED SURVEY WORK WAS PERFORMED BY ME OR  
UNDER MY DIRECT PERSONAL SUPERVISION AND THAT I AM A DULY  
LICENSED LAND SURVEYOR UNDER THE LAWS OF THE STATE OF IOWA.  
Michael J. Weber December 12, 2012  
MICHAEL J. WEBER (DATE)  
LICENSE NUMBER 15084  
MY LICENSE RENEWAL DATE IS DECEMBER 31, 2013

SHEETS COVERED BY THIS SEAL: THIS SHEET

List Corners to be Indexed		
Corner	Sec	Twp Range
NW COR, SW-NW	4	84N 2E
NE COR, SW-NW	4	84N 2E
NE COR, NW-SW	4	84N 2E



Document 13-941

Book 3 Page 82 Type 15 001 Pages 1

Date 3/06/2013 Time 2:15 PM

Rec Amt \$7.00

ARLENE SCHAUF, RECORDER/REGISTRAR  
JACKSON COUNTY IOWA

PREPARED BY: MICHAEL J. WEBER, WEBER SURVEYING, LLC, 26789 46TH AVE, BERNARD, IA 52032 (563) 879-4173

## UNITED STATES PUBLIC LAND SURVEY CORNER CERTIFICATE OF

LAND SURVEY MONUMENTS SITUATED IN SECTION 4, TOWNSHIP 84 NORTH, RANGE 2 EAST  
OF THE FIFTH PRINCIPAL MERIDIAN, JACKSON COUNTY, IOWA.  
PREVIOUSLY RECORDED NONE UNLESS OTHERWISE NOTED BELOW

(book, page, document number, etc.)

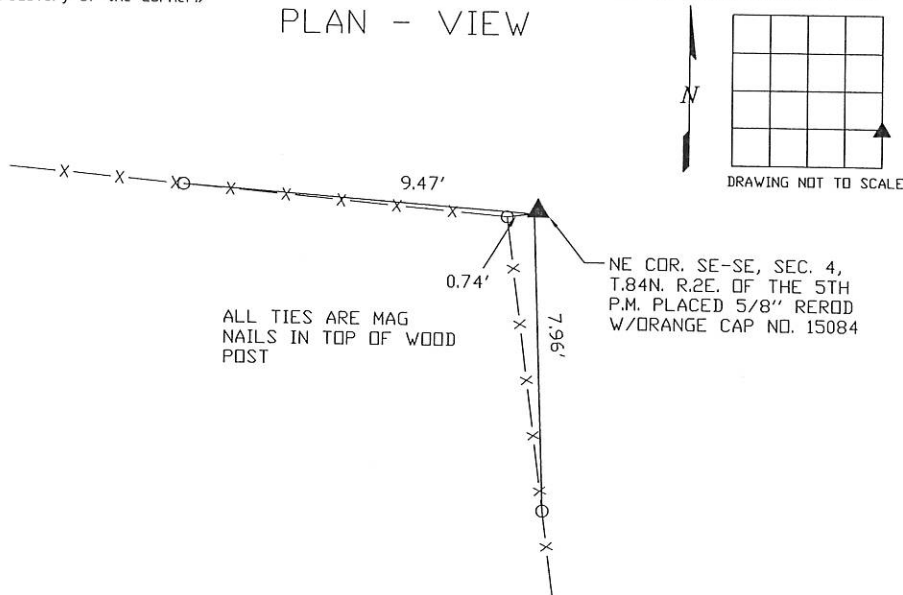
(Show reason for preparing this certificate, the evidence and detailed procedures used in establishing the corner positions and monumentation found or placed.)

Monument Description and Remarks:

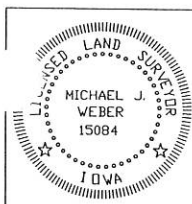
-NE COR. SE-SE, SEC. 4, T.84N. R.2E. OF THE 5TH P.M. PLACED 5/8" REROD W/ORANGE CAP NO. 15084  
ESTABLISHED CORNER AT THE INTERSECTION OF THE OCCUPATION FENCELINE RUNNING SOUTH WITH  
THE OCCUPATION FENCELINE RUNNING WEST.

(Show a minimum of three reference ties to durable physical objects, relevant monuments and physical conditions that will enable recovery of the corner.)

### PLAN - VIEW



DWG. NO. 13018



I HEREBY CERTIFY THAT THIS LAND SURVEYING DOCUMENT WAS  
PREPARED AND THE RELATED SURVEY WORK WAS PERFORMED BY ME OR  
UNDER MY DIRECT PERSONAL SUPERVISION AND THAT I AM A DULY  
LICENSED LAND SURVEYOR UNDER THE LAWS OF THE STATE OF IOWA.  
*Michael J. Weber* *February 26, 2013*  
MICHAEL J. WEBER (DATE)  
LICENSE NUMBER 15084  
MY LICENSE RENEWAL DATE IS DECEMBER 31, 2013

SHEETS COVERED BY THIS SEAL: THIS SHEET

List Corners to be Indexed  
Corner Sec Twp Range  
NE COR, SE-SE 4 84N 2E