

IOW ENGINEERS & SURVEYORS, P.C. 4155 PENNSYLVANIA AVE, DUBUQUE, IOWA, (319) 556-2464

SURVEY INTERIOR
JACKSON COUNTY IOWA
RECORDER 710 Jell

UNITED STATES PUBLIC LAND SURVEY CORNER CERTIFICATE OF

LAND SURVEY MONUMENTS SITUATED IN SECTION 3, TOWNSHIP 84 NORTH, RANGE 2 EAST
OF THE FIFTH PRINCIPAL MERIDIAN, JACKSON COUNTY, IOWA.
PREVIOUSLY RECORDED IN _____ IN COUNTY RECORDER'S OFFICE.

(Show reason for preparing this certificate, the evidence and detailed procedures used in establishing the corner positions and monumentation found or placed.)

Monument Description and Remarks: _____

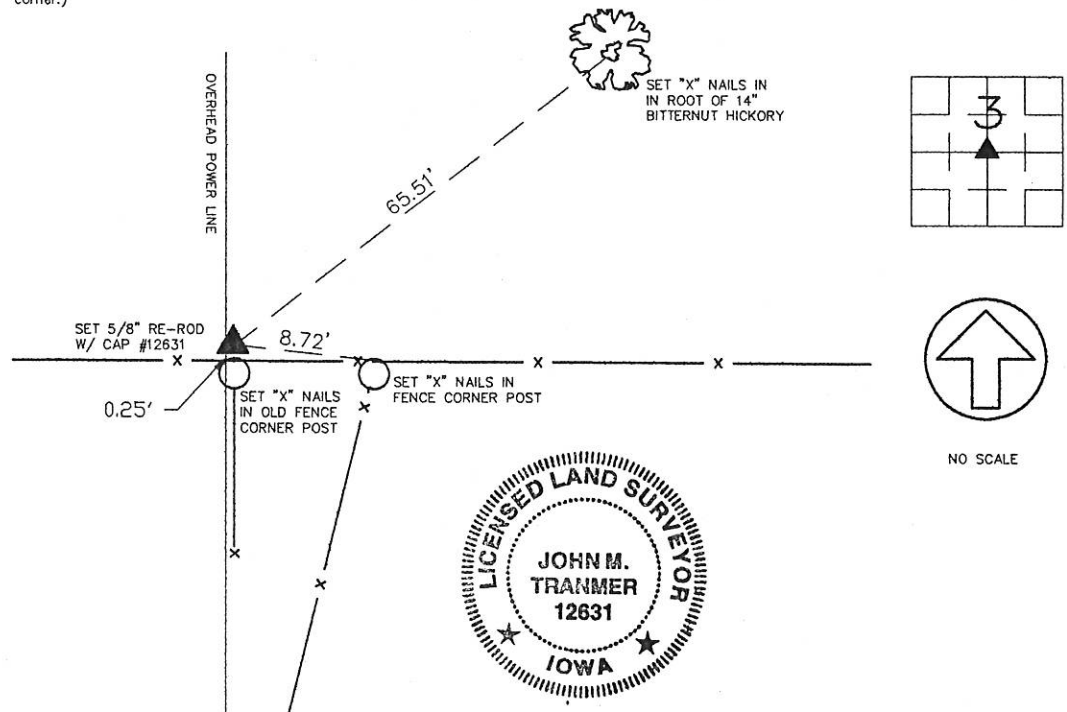
CENTER OF SECTION 3, T84N, R2E - SET 5/8" ROD W/ CAP #12631

SET ROD AT BASE OF OLD FENCE CORNER POST AT INTERSECTION OF EAST-WEST FENCE

AND NORTH-SOUTH FENCE

PLAN - VIEW

(Show a minimum of three reference ties to durable physical objects, relevant monuments and physical conditions that will enable recovery of the corner.)



I HEREBY CERTIFY THAT THE SURVEY WORK WAS COMPLETED AND THIS CERTIFICATE WAS PREPARED BY ME OR UNDER MY DIRECT PERSONAL SUPERVISION AND THAT I AM A DULY REGISTERED LAND SURVEYOR UNDER THE LAWS OF THE STATE OF IOWA.

John M. Tranmer
JOHN M. TRANMER REG. NO. 12631
DATE: 2-26-98
MY REGISTRATION EXPIRES DECEMBER 31, 1998

LIST CORNERS TO BE INDEXED

CORNERS	SECTION	TWP	RANGE
CENTER	3	T84N	R2E



Iowa, Illinois, Wisconsin

ENGINEERS AND
SURVEYORS P.C.

4155 Pennsylvania Ave.
Dubuque, Ia. 52002
(319) 556-2464

Guttenberg, IA
Galena, IL
Cuba City, WI

MONUMENT RECORD

COUNTY: JACKSON
TOWNSHIP: SOUTH FORK

DATE: 2-03-98
REVISED:

FIELD
BOOK NO. 366

PROJ.
NO. 977154

INDEX
NO.