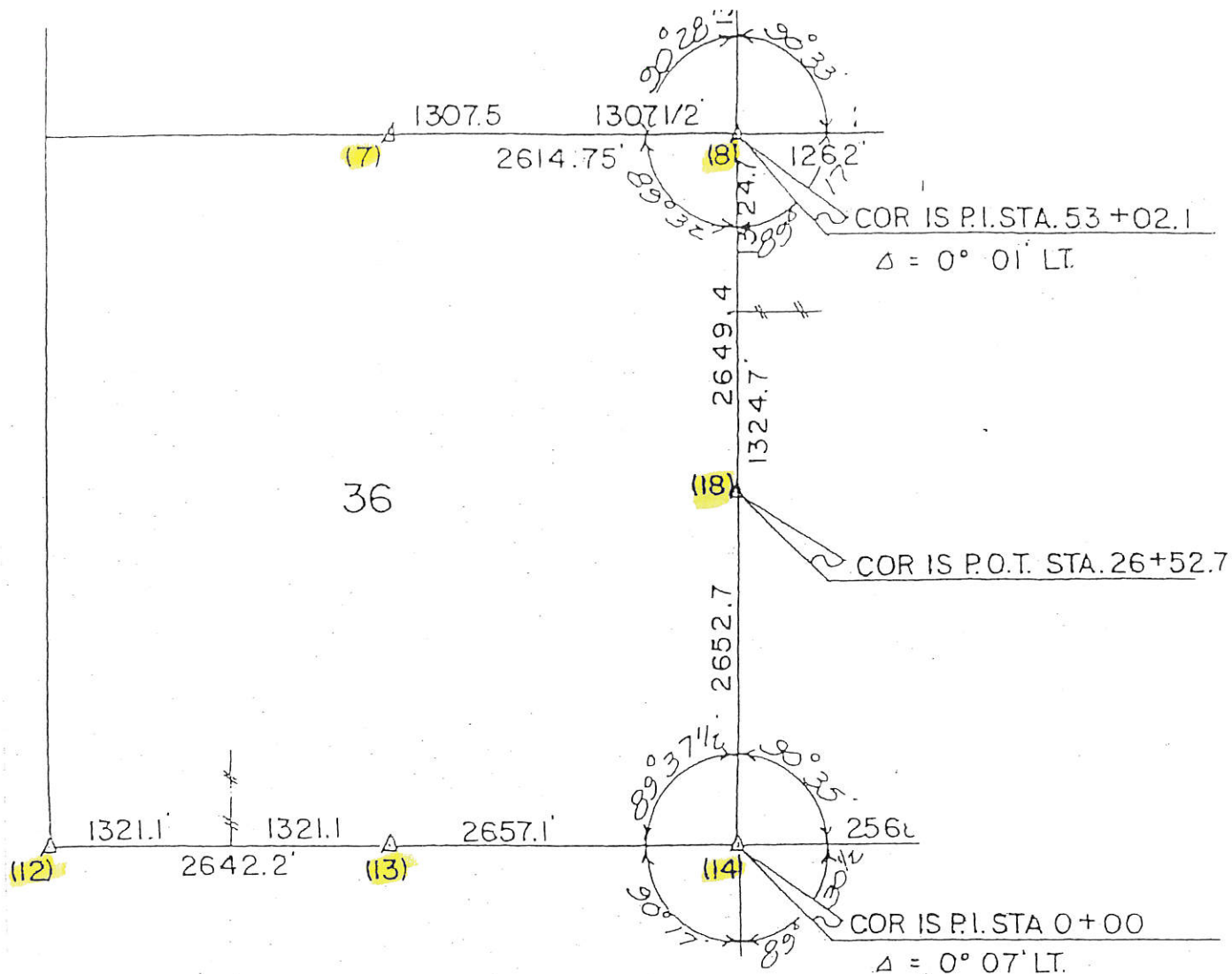


Sec. 36



LAND
T-84-N

CORNER

SURVEY
R-2 & 3-E

MADE FOR
IOWA STATE HIGHWAY COMMISSION FOR THE PURPOSE OF R.O.W.
DESCRIPTIONS ON IOWA PRIMARY HWY. NO. 61 SOUTH OF THE TOWN
OF MAQUOKETA.

MADE BY
JOHN D. FRANKLIN
JACKSON COUNTY

R.L.S. NO. 2051
F- 21

SEPTEMBER 1959

ALL DISTANCES WERE CAREFULLY MEASURED AND MAY NOT AGREE WITH ROAD
SURVEY STATIONING.

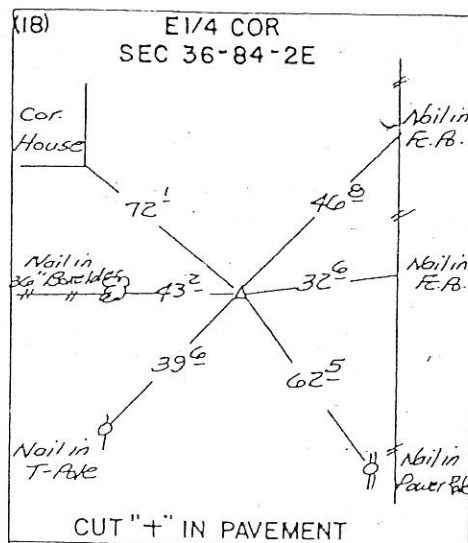
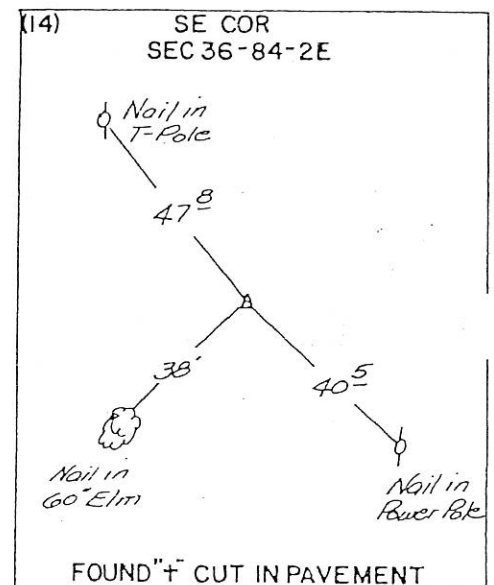
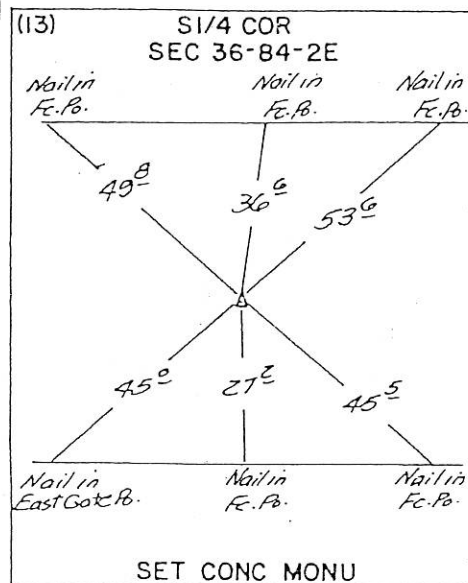
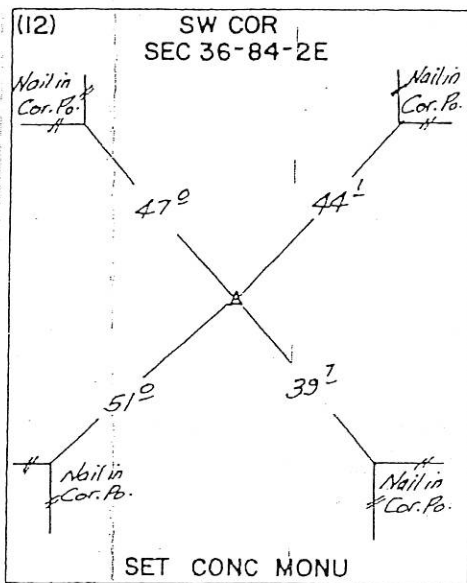
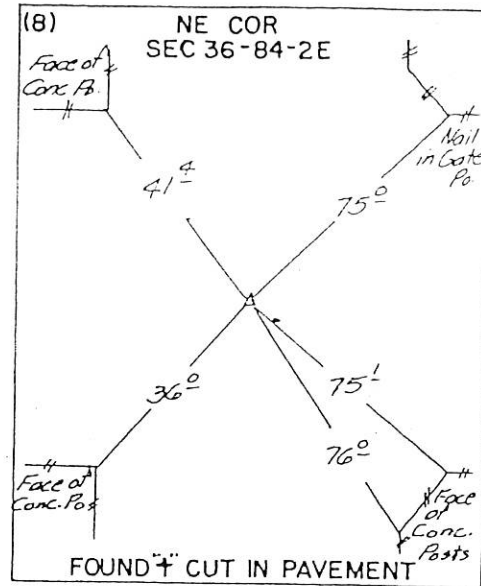
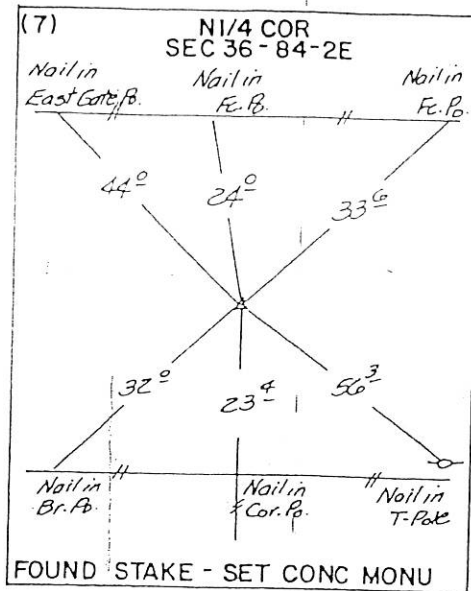
FOR COMPLETE INFORMATION ON THIS SURVEY, SEE FIELD NOTES ON FILE IN
AMES OFFICE.

I, HEREBY CERTIFY THAT THIS PLAT IS A TRUE REPRESENTATION OF A SURVEY
MADE BY ME, ASSISTED BY JAMES D. FRANKLIN, R.H. JANS, F.A. NORTON, L.R. MC GUIRE
AND R. MCCREA, ALL DULY SWORN, AND IS CORRECT TO THE BEST OF MY KNOWLEDGE.

SIGNED: December 8, 1959

John D. Franklin
JOHN D. FRANKLIN R.L.S. NO. 2051





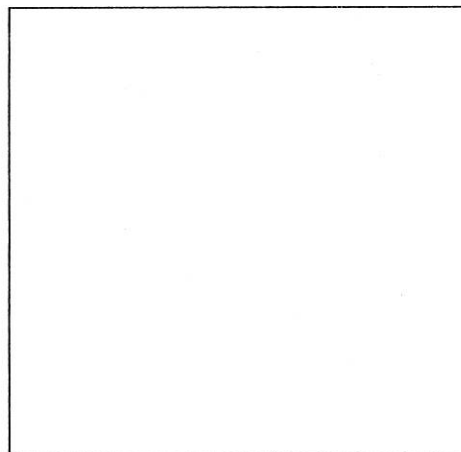
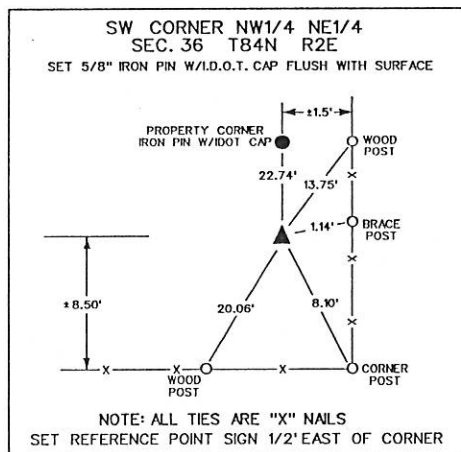
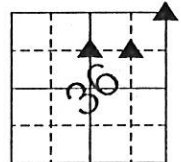
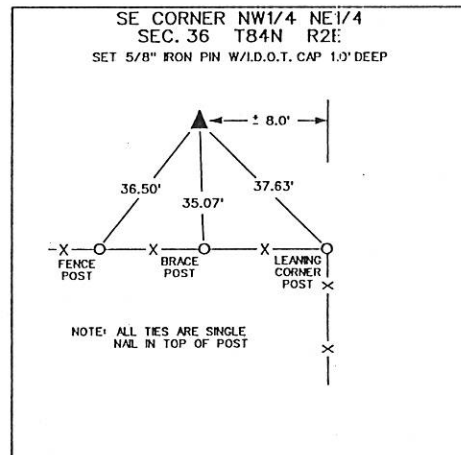
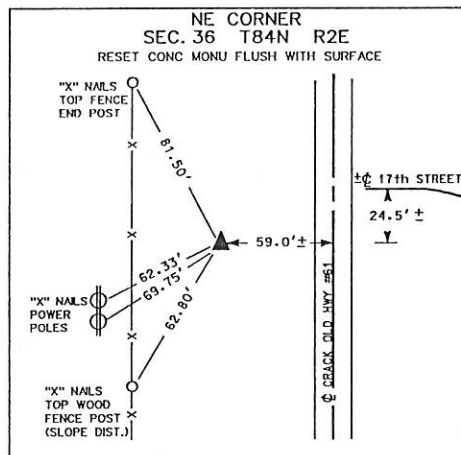


FILE NO. **1214**
BOOK 1 PAGE 62
1991 NOV 15 AM 8:45
SHIRLY RITENOUR
JACKSON COUNTY, IOWA
RECORDER
#5

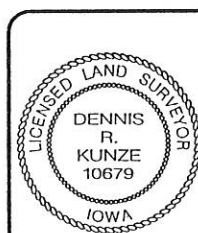
1997 APR 3 AM 9:59

SHIRLY RITENOUR
JACKSON COUNTY, IOWA
RECORDERDENNIS R. KUNZE BOX 3150 CEDAR RAPIDS, IOWA 52406-3150 319-364-0235
UNITED STATES PUBLIC LAND SURVEY CORNER CERTIFICATEOF
LAND SURVEY MONUMENTS SITUATED IN SECTION 36, TOWNSHIP 84N, RANGE
2E, OF THE 5TH PRINCIPAL MERIDIAN JACKSON COUNTY IOWA.
PREVIOUSLY RECORDED IN SEE REMARKS IN COUNTY RECORDER'S OFFICE.
(book, page, document number, etc.)

(Show reason for preparing this certificate, the evidence and detailed procedures used in establishing the corner positions and monumentation found or placed.)

MONUMENT DESCRIPTION AND REMARKS: NE CORNER PREVIOUSLY RECORDED IN BOOK 1 PAGE 62
1991 NOVEMBER 15

- X- - FENCE
- S.C.M. - STANDARD CONCRETE MONUMENT
- ⊗ - POWER POLE
- ▲ - SECTION CORNER
- ☼ - TREE



I hereby certify that this land surveying document was prepared by me or under my direct personal supervision and that I am a duly licensed Land Surveyor under the laws of the State of Iowa.

Dennis R. Kunze 4-1-97
Dennis R. Kunze Date

License number 10679

My license renewal date is December 31, 1998

Pages or sheets covered by this seal:

1 of 1

LAND CORNERS TO BE RECORDED

Corners	Section	Twp.	Range
NE CORNER	36	84N	2E
SE COR. NW1/4 NE1/4	36	84N	2E
SW COR. NW1/4 NE1/4	36	84N	2E