



Document 11-2192

Book 2 Page 766 Type 15 001 Pages 1
Date 6/06/2011 Time 11:46 AM
Rec Amt \$9.00

ARLENE SCHAUF, RECORDER/REGISTRAR
JACKSON COUNTY IOWA

PREPARED BY: MICHAEL J. WEBER, WEBER SURVEYING, LLC, 26789 46TH AVE, BERNARD, IA 52032 (563) 879-4173

UNITED STATES PUBLIC LAND SURVEY CORNER CERTIFICATE OF

LAND SURVEY MONUMENTS SITUATED IN SECTION 2, TOWNSHIP 84 NORTH, RANGE 2 EAST
OF THE FIFTH PRINCIPAL MERIDIAN, JACKSON COUNTY, IOWA.
PREVIOUSLY RECORDED NONE UNLESS NOTED BELOW

(book, page, document number, etc.)

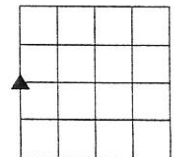
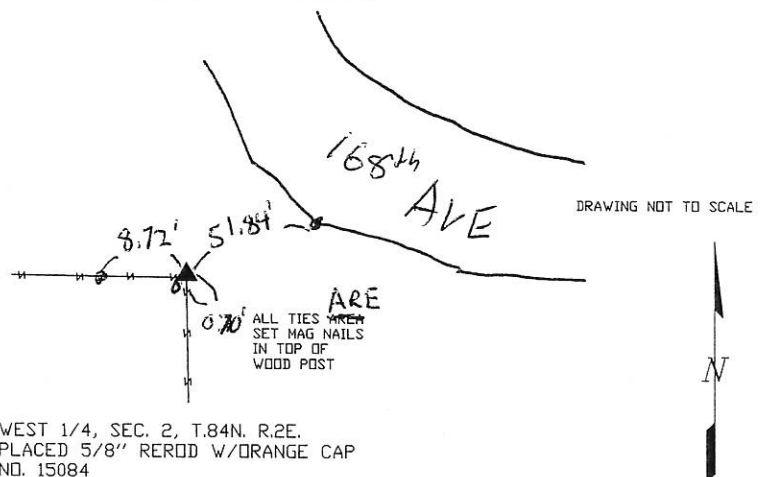
(Show reason for preparing this certificate, the evidence and detailed procedures used in establishing the corner positions and monumentation found or placed.)

Monument Description and Remarks:

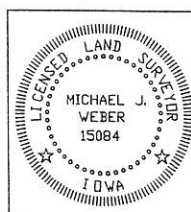
-WEST 1/4, SEC. 2, T.84N. R.2E. PLACED 5/8" REROD W/ORANGE CAP NO. 15084 NO MONUMENT FOUND.
ESTABLISHED CORNER AT THE INTERSECTION OF OCCUPATION FENCELINE RUNNING SOUTH AND WEST OF
CORNER

(Show a minimum of three reference ties to durable physical objects, relevant monuments and physical conditions that will enable recovery of the corner.)

PLAN - VIEW



DWG. NO. 2011\IHRIG



I HEREBY CERTIFY THAT THIS LAND SURVEYING DOCUMENT WAS
PREPARED AND THE RELATED SURVEY WORK WAS PERFORMED BY ME OR
UNDER MY DIRECT PERSONAL SUPERVISION AND THAT I AM A DULY
LICENSED LAND SURVEYOR UNDER THE LAWS OF THE STATE OF IOWA.
Michael J. Weber June 6, 2011
MICHAEL J. WEBER (DATE)
LICENSE NUMBER 15084
MY LICENSE RENEWAL DATE IS DECEMBER 31, 2011
SHEETS COVERED BY THIS SEAL: THIS SHEET

Corner	Sec	Twp	Range
WEST 1/4	2	84N	2E