

Document 11-4072

Book 2 Page 778 Type 15 001 Pages 1
Date 10/19/2011 Time 12:19 PM
Rec Amt \$7.00

ARLENE SCHAUF, RECORDER/REGISTRAR
JACKSON COUNTY IOWA

Prepared by Wm. Burger Land Surveyor 510 3rd Street West Court, Worthington, Iowa Phone 563 - 865 2028

UNITED STATES PUBLIC LAND SURVEY CORNER CERTIFICATE

Land Survey Monuments situated in Section 21, Township 84N, Range 2E, of the Fifth Principal Meridian, Jackson County, Iowa. Previously recorded in N/A in the Office of the County Recorder

Monument Description and Remarks: (No Corner Certificates found at the County Recorders Office)

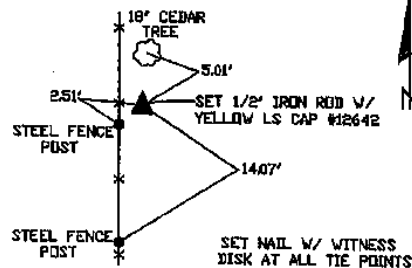
NW CORNER NE1/4 NW1/4 - SET 1/2" IRON ROD W/ YELLOW LS CAP #12642 - SET ON LINE AND MIDWAY BETWEEN THE NW CORNER AND THE N1/4 CORNER

N1/4 CORNER - SET 1/2" IRON ROD W/ YELLOW LS CAP #12642 - USED INFORMATION FROM EXISTING RIGHT OF WAY PLAT RECORDED IN BOOK AAA, PAGE 413 TO SET THIS CORNER

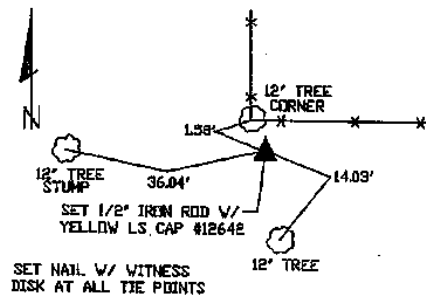
SW CORNER NE1/4 NW1/4 - SET 1/2" IRON ROD W/ YELLOW LS CAP #12642 - RUN STRAIGHT LINES FROM OPPOSITE 1/4 1/4 CORNERS AND SET AT POINT OF INTERSECTION

PLAN VIEW

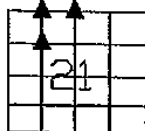
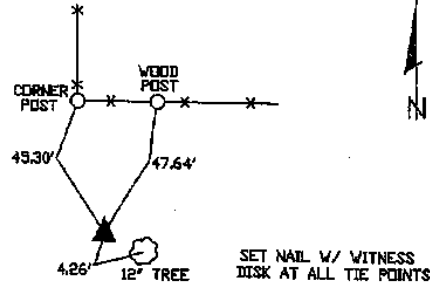
NW CORNER NE1/4 NW1/4



N1/4 CORNER



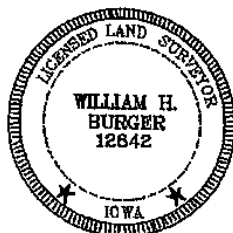
SW CORNER NE1/4 NW1/4



SEC. 21 TWP. 84N RANGE 2E

CORNERS TO BE INDEXED

NW CORNER NE1/4 NW1/4	21	84N	2E
N1/4 CORNER	21	84N	2E
SW CORNER NE1/4 NW1/4	21	84N	2E



I hereby certify that this land surveying document was prepared and related survey work was performed by me or under my direct personal supervision and that I am a duly licensed Land Surveyor under the laws of the State of Iowa.

William H. Burger 10/16/11
William H. Burger Date

License number 12642

My license renewal date is December 31, 2012

Pages or Sheets covered by this seal Sheet 1 of 1

Blank - Done HFA

Document 20-1358

Type 15 001 Pages 1
Date 4/16/2020 Time 9:53 AM
Rec Amt \$7.00

ARLENE SCHAUF, RECORDER/REGISTRAR
JACKSON COUNTY IOWA

PREPARED BY: MICHAEL J. WEBER, WEBER SURVEYING, LLC, 26789 46TH AVE, BERNARD, IA 52032 (563) 879-4173

UNITED STATES PUBLIC LAND SURVEY CORNER CERTIFICATE OF

LAND SURVEY MONUMENTS SITUATED IN SECTION 21, TOWNSHIP 84 NORTH, RANGE 2 EAST
OF THE FIFTH PRINCIPAL MERIDIAN, JACKSON COUNTY, IOWA.

PREVIOUSLY RECORDED BK-2 PG-778, DOC. NO. 11-4072 SEE NOTES BELOW

(book, page, document number, etc.)

(Show reason for preparing this certificate, the evidence and detailed procedures used in establishing the corner positions and monumentation found or placed.)

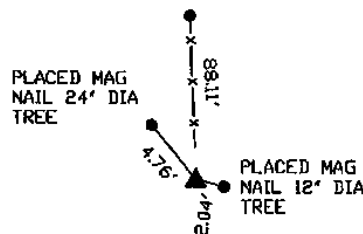
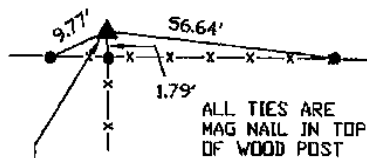
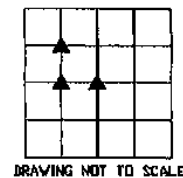
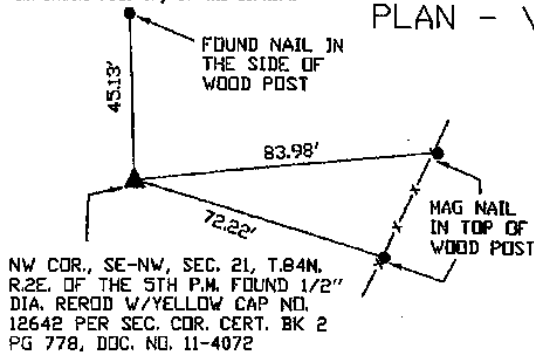
-NW COR., SE-NW, SEC. 21, T.84N. R.2E. OF THE 5TH P.M. FOUND 1/2" DIA. REROD W/YELLOW CAP NO. 12642 PREVIOUSLY RECORDED IN BK 2 PG 778, DOC. NO. 11-4072

-SW COR., SE-NW, SEC. 21, T.84N. R.2E. OF THE 5TH P.M. PLACED 5/8" DIA. REROD W/ORANGE CAP NO. 15084. ESTABLISHED CORNER AT THE INTERSECTION OF THE OCCUPATION FENCE LINE RUNNING EAST-WEST & SOUTH.

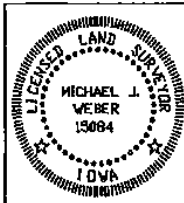
-CENTER, SEC. 21, T.84N. R.2E. OF THE 5TH P.M. PLACED 5/8" DIA. REROD W/ORANGE CAP NO. 15084. ESTABLISHED CORNER AT THE INTERSECTION OF THE OCCUPATION FENCE LINE RUNNING EAST-WEST & NORTH-SOUTH.

(Show a minimum of three reference ties to durable physical objects, relevant monuments and physical conditions that will enable recovery of the corner.)

PLAN - VIEW



DWG. NO. 18130-BOWMAN



I HEREBY CERTIFY THAT THIS LAND SURVEYING DOCUMENT WAS PREPARED AND THE RELATED SURVEY WORK WAS PERFORMED BY ME OR UNDER MY DIRECT PERSONAL SUPERVISION AND THAT I AM A DULY LICENSED LAND SURVEYOR UNDER THE LAWS OF THE STATE OF IOWA.
Michael J. Weber (DATE) *April 15, 2020*
MICHAEL J. WEBER
LICENSE NUMBER 15084
MY LICENSE RENEWAL DATE IS DECEMBER 31, 2021
SHEETS COVERED BY THIS SEAL: THIS SHEET

Corner	Sec	Twp	Range
SW COR., SE-NW	21	84N	2E
NW COR., SE-NW	21	84N	2E
CENTER	21	84N	2E