



Document 06-4239

Book 2 Page 493 Type 15 001 Pages 1

Date 11/06/2006 Time 8:21 AM

Rec Amt \$7.00

ARLENE SCHAUF, RECORDER  
JACKSON COUNTY IOWAPrepared by Egger Engineering and Land  
Surveying, PC 2395 Tech Drive Suite 2  
Bettendorf, Iowa 52722

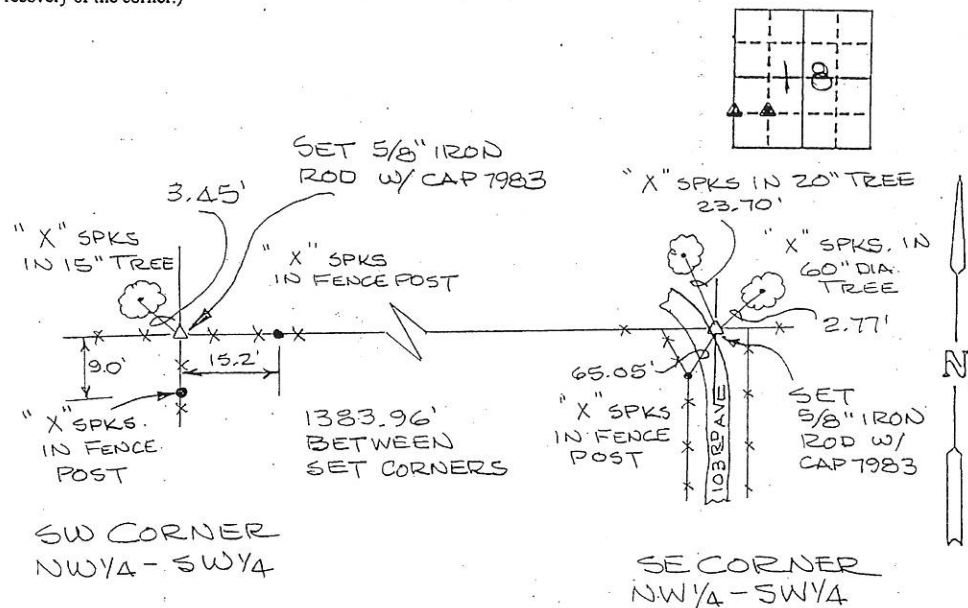
## UNITED STATES PUBLIC LAND SURVEY CORNER CERTIFICATE OF

Land Survey Monuments situated in Section 18, Township 84N, Range 2E, of the Fifth Principal  
Meridian, JACKSON County, Iowa. Previously recorded in NEVER RECORDED  
in County Recorder's Office.

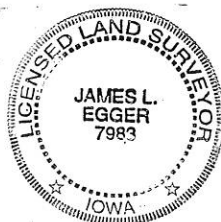
(book, page, document number, etc.)

(Show reason for preparing this certificate, the evidence and detailed procedures used in establishing the corner positions and  
monumentation found or placed.)Monument Description and Remarks: A DIVISION OF THE NW 1/4 OF THE SW 1/4  
REQUIRED US TO SET THESE TWO MONUMENTS. THE EASTERLY  
MONUMENT WAS SET AT THE INTERSECTION OF THE E OF 103RD AVE  
AND AN E-W FENCELINE. THE WESTERLY MONUMENT WAS  
SET AT THE INTERSECTION OF AN E-W FENCE AND A N-S FENCE.

## PLAN - VIEW

(Show a minimum of three reference ties to durable physical object, relevant monuments and physical conditions that will enable  
recovery of the corner.)I hereby certify that the survey work was completed and  
this certificate was prepared by me or under my direct  
supervision and that I am a duly registered land  
surveyor under the laws of the state of Iowa.Signature: James L. Egger  
James L. Egger L.S.Date: Nov. 3, 2006 Reg. No. 7983

SEAL

List Corners to be Indexed  
Corners Section Twp Range

SE - NW 1/4 - SW 1/4 18 84N 2E

SW - NW 1/4 - SW 1/4 18 84N 2E

Book 2 Page 493

ARLENE SCHAUF, RECORDER/REGISTRAR  
JACKSON COUNTY IOWA

PREPARED BY: MICHAEL J. WEBER, WEBER SURVEYING, LLC, 26789 46TH AVE, BERNARD, IA 52032 (563) 879-4173

# UNITED STATES PUBLIC LAND SURVEY CORNER CERTIFICATE OF

LAND SURVEY MONUMENTS SITUATED IN SECTION 18, TOWNSHIP 84 NORTH, RANGE 2 EAST  
OF THE FIFTH PRINCIPAL MERIDIAN, JACKSON COUNTY, IOWA.  
PREVIOUSLY RECORDED NONE UNLESS OTHERWISE NOTED

(book, page, document number, etc.)

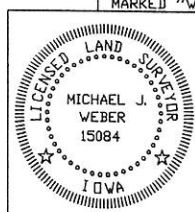
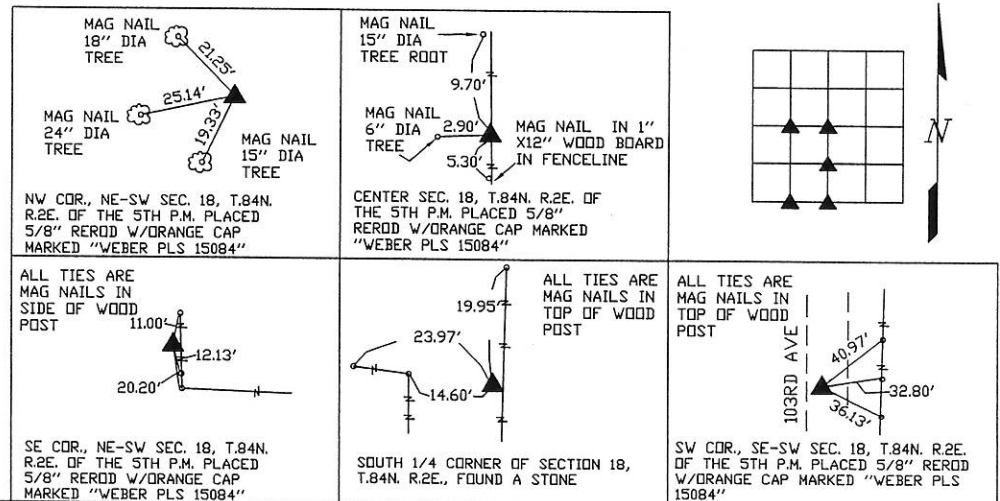
(Show reason for preparing this certificate, the evidence and detailed procedures used in establishing the corner positions and monumentation found or placed.)

Monument Description and Remarks:

-SOUTH 1/4 CORNER OF SECTION 18, T.84N. R.2E., FOUND A STONE AS SHOWN AS THE NORTH 1/4 CORNER OF SECTION 19, T.84N. R.2E. IN THE IDOT SECTION CORNER TIES FOR STATE HWY NO. 64, IN THE JACKSON COUNTY ENGINEERS OFFICE.  
-CENTER SEC. 18, T.84N. R.2E. OF THE 5TH P.M. PLACED 5/8" REROD W/ORANGE CAP MARKED "WEBER PLS 15084", ESTABLISHED CORNER AT THE INTERSECTION OF THE LINE BETWEEN THE W 1/4 CORNER AND THE EAST 1/4 CORNER OF SECTION 18 AND A EXISTING NORTH AND SOUTH OCCUPATION FENCELINE.  
-NW COR., NE-SW SEC. 18, T.84N. R.2E. OF THE 5TH P.M. PLACED 5/8" REROD W/ORANGE CAP MARKED "WEBER PLS 15084", ESTABLISHED CORNER ONLINE AND A PROPORTIONATE MEASUREMENT BETWEEN THE W 1/4 CORNER AND CENTER OF SECTION 18.  
-SE COR., NE-SW SEC. 18, T.84N. R.2E. OF THE 5TH P.M. PLACED 5/8" REROD W/ORANGE CAP MARKED "WEBER PLS 15084", ESTABLISHED CORNER ONLINE AND MIDWAY BETWEEN THE S 1/4 CORNER AND CENTER OF SECTION 18.  
-SW COR., SE-SW SEC. 18, T.84N. R.2E. OF THE 5TH P.M. PLACED 5/8" REROD W/ORANGE CAP MARKED "WEBER PLS 15084", ESTABLISHED CORNER ONLINE AND A PROPORTIONATE MEASUREMENT BETWEEN THE S 1/4 CORNER AND SW CORNER OF SECTION 18.

(Show a minimum of three reference ties to durable physical objects, relevant monuments and physical conditions that will enable recovery of the corner.)

## PLAN - VIEW



I HEREBY CERTIFY THAT THIS LAND SURVEYING DOCUMENT WAS PREPARED AND THE RELATED SURVEY WORK WAS PERFORMED BY ME OR UNDER MY DIRECT PERSONAL SUPERVISION AND THAT I AM A DULY LICENSED LAND SURVEYOR UNDER THE LAWS OF THE STATE OF IOWA.  
*Michael J. Weber* February 10, 2009  
MICHAEL J. WEBER (DATE)  
LICENSE NUMBER 15084  
MY LICENSE RENEWAL DATE IS DECEMBER 31, 2009  
SHEETS COVERED BY THIS SEAL: THIS SHEET

List Corners to be Indexed		
Corner	Sec	Twp Range
SOUTH 1/4	18	84N 2E
CENTER	18	84N 2E
NW Cor., NE-SW	18	84N 2E
SE Cor., NE-SW	18	84N 2E
SW Cor., SE-SW	18	84N 2E

DWG. NO. DIETZ