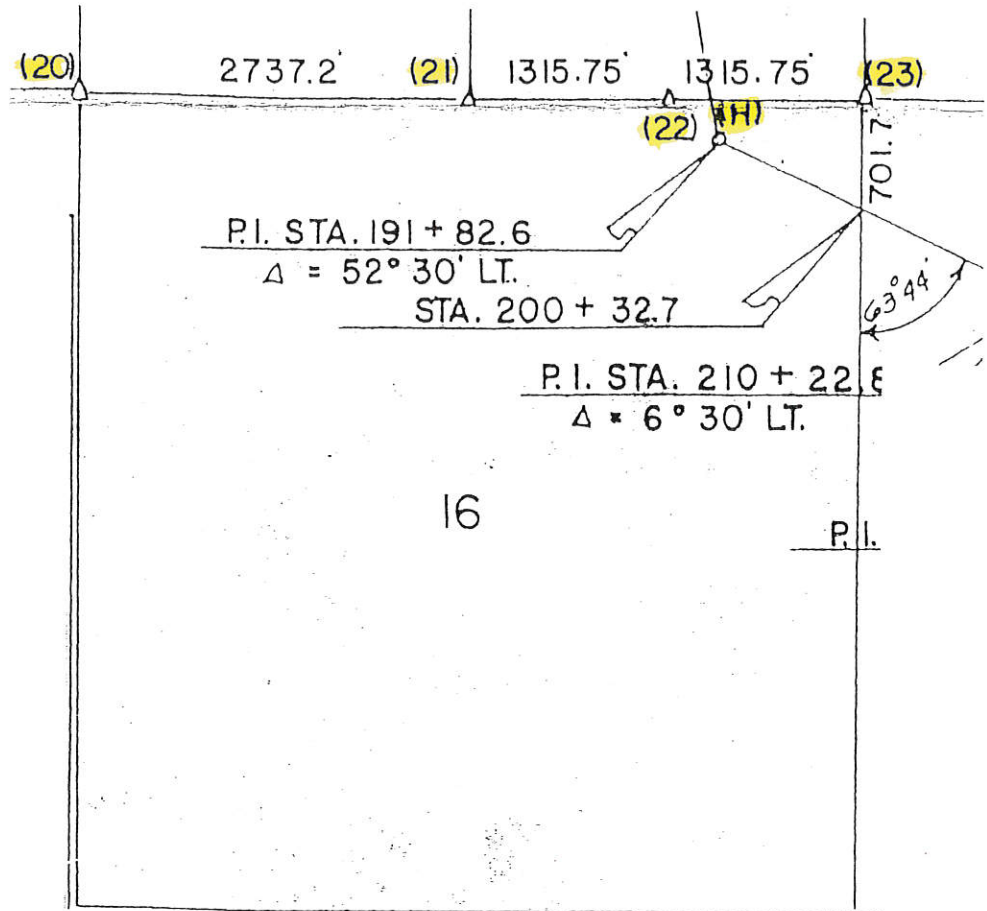


Sec. 16



LAND
T-84-N

CORNER

SURVEY
R-2-E

MADE FOR

IOWA STATE HIGHWAY COMMISSION FOR THE PURPOSE OF R.O.W.
DESCRIPTIONS ON IOWA PRIMARY ROAD NO. 130 FROM THE MAQUOKETA
CAVES STATE PARK EAST TO THE TOWN OF MAQUOKETA.

MADE BY

JOHN D. FRANKLIN
JACKSON COUNTY

R.L.S. NO. 2051
F-1117

SEPT. - OCT. 1959

ALL DISTANCES WERE CAREFULLY MEASURED AND MAY NOT AGREE WITH ROAD
SURVEY STATIONING.

FOR COMPLETE INFORMATION ON THIS SURVEY, SEE FIELD NOTES ON FILE IN
AMES OFFICE.

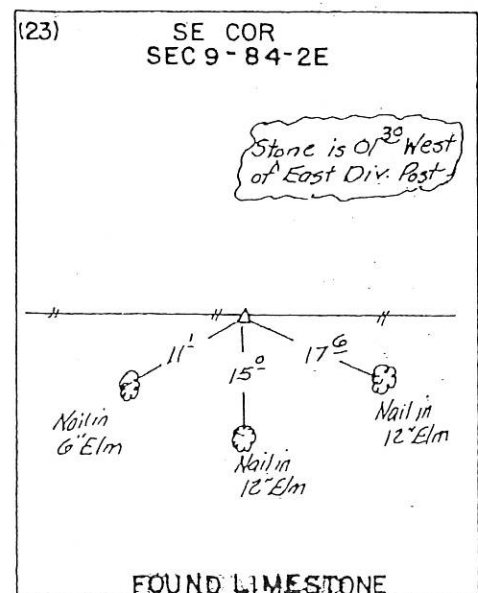
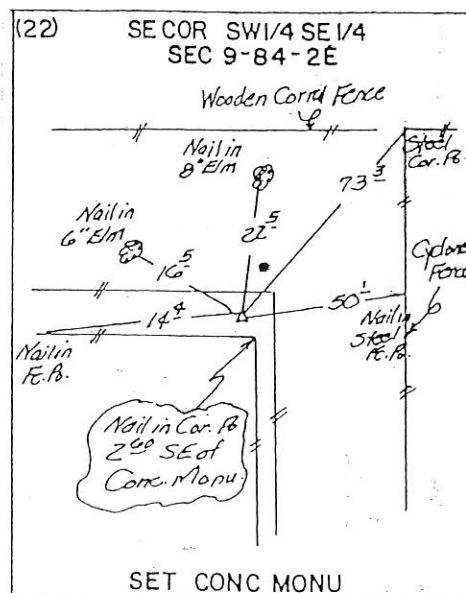
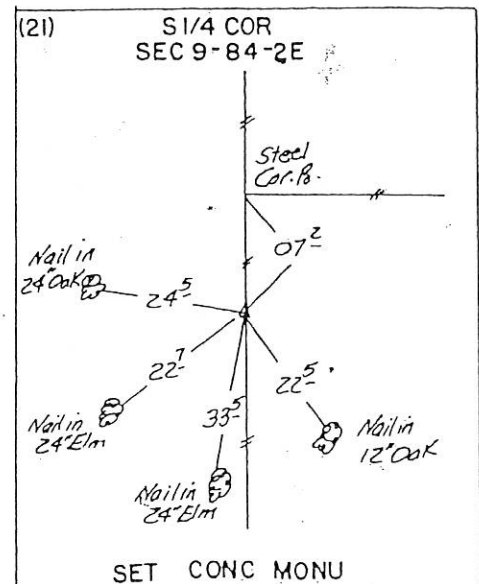
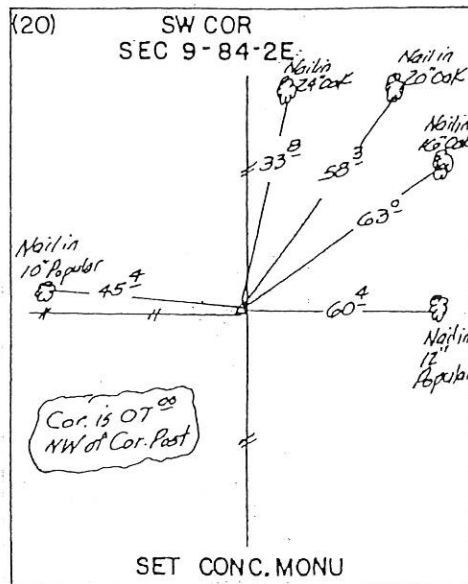
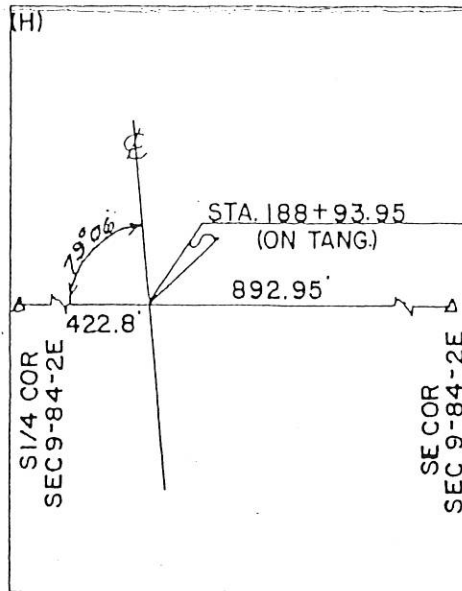
I, HEREBY CERTIFY THAT THIS PLAT IS A TRUE REPRESENTATION OF A SURVEY MADE
BY ME, ASSISTED BY JAMES D. FRANKLIN, R. F. POPELKA, R. H. JANS, W. M. MYERS, F. A. NORTON,
L. R. MCGUIRE, R. P. VAN HORBECK, ELVIN K. IRONS AND R. MCCREA, ALL DULY SWORN, AND IS
CORRECT TO THE BEST OF MY KNOWLEDGE.

SIGNED: December 8, 1959

John D. Franklin
JOHN D. FRANKLIN

R.L.S. NO. 2051







Document 11-4108

Book 2 Page 779 Type 15 001 Pages 1
Date 10/21/2011 Time 11:12 AM
Rec Amt \$7.00

ARLENE SCHAUF, RECORDER/REGISTRAR
JACKSON COUNTY IOWA

Prepared by Wm. Burger Land Surveyor

510 3rd Street West Court, Worthington, Iowa

Phone 563 - 855 2028

UNITED STATES PUBLIC LAND SURVEY CORNER CERTIFICATE

Land Survey Monuments situated in Section 16, Township 84N, Range 2E, of the Fifth Principal Meridian, Jackson County, Iowa. Previously recorded in N/A in the Office of the County Recorder

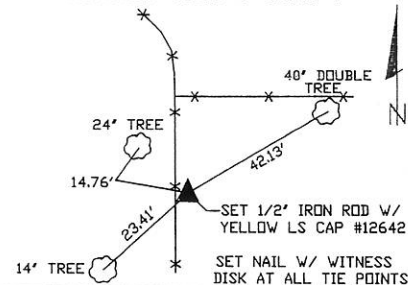
Monument Description and Remarks: (No Corner Certificates found at the County Recorders Office)

NW CORNER SE1/4 SW1/4 - SET 1/2" IRON ROD W/ YELLOW LS CAP #12642 - RUN STRAIGHT LINES FROM OPPOSITE 1/4 1/4 CORNERS AND SET AT POINT OF INTERSECTION

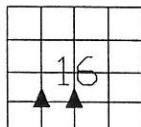
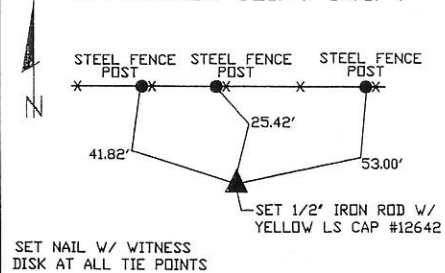
NE CORNER SE1/4 SW1/4 - SET 1/2" IRON ROD W/ YELLOW LS CAP #12642 - SET ON LINE AND MIDWAY BETWEEN THE CENTER OF SECTION AND THE S1/4 CORNER

PLAN VIEW

NW CORNER SE1/4 SW1/4



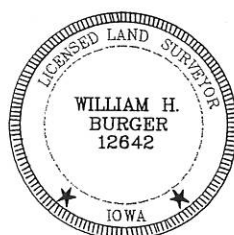
NE CORNER SE1/4 SW1/4



SEC. 16 TWP. 84N RANGE 2E

CORNERS TO BE INDEXED

NW CORNER SE1/4 SW1/4	16	84N	2E
NE CORNER SE1/4 SW1/4	16	84N	2E



I hereby certify that this land surveying document was prepared and related survey work was performed by me or under my direct personal supervision and that I am a duly licensed Land Surveyor under the laws of the State of Iowa.

William H. Burger 10/20/11
William H. Burger Date

License number 12642

My license renewal date is December 31, 2012

Pages or Sheets covered by this seal: Sheet 1 of 1

Book 2 Page 779



Document 16-1739

Book 2016 Page 1739 Type 15 001 Pages 1

Date 5/19/2016 Time 9:07 AM

Rec Amt \$7.00

ARLENE SCHAUF, RECORDER/REGISTRAR
JACKSON COUNTY IOWA

PREPARED BY: MICHAEL J. WEBER, WEBER SURVEYING, LLC, 26789 46TH AVE, BERNARD, IA 52032 (563) 879-4173

UNITED STATES PUBLIC LAND SURVEY CORNER CERTIFICATE OF

LAND SURVEY MONUMENTS SITUATED IN SECTION 16, TOWNSHIP 84 NORTH, RANGE 2 EAST
OF THE FIFTH PRINCIPAL MERIDIAN, JACKSON COUNTY, IOWA.
PREVIOUSLY RECORDED PLAT BOOK 1 PAGE 17

(book, page, document number, etc.)

(Show reason for preparing this certificate, the evidence and detailed procedures used in establishing the corner positions and monumentation found or placed.)

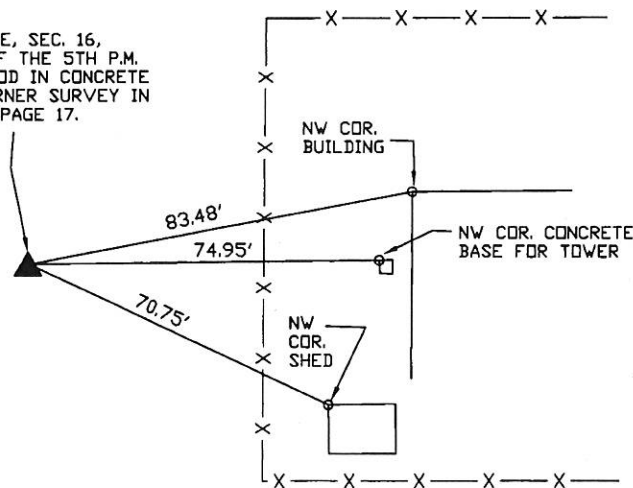
Monument Description and Remarks:

-NW COR. NE-NE, SEC. 16, T.84N. R.2E. OF THE 5TH P.M. FOUND 1/2" ROD IN CONCRETE PER LAND CORNER SURVEY IN PLAT BOOK 1 PAGE 17.

(Show a minimum of three reference ties to durable physical objects, relevant monuments and physical conditions that will enable recovery of the corner.)

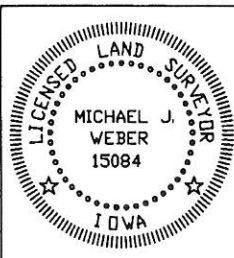
PLAN - VIEW

NW COR. NE-NE, SEC. 16,
T.84N. R.2E. OF THE 5TH P.M.
FOUND 1/2" ROD IN CONCRETE
PER LAND CORNER SURVEY IN
PLAT BOOK 1 PAGE 17.



DRAWING NOT TO SCALE

DWG. NO. 15065-BOLLINGER



I HEREBY CERTIFY THAT THIS LAND SURVEYING DOCUMENT WAS
PREPARED AND THE RELATED SURVEY WORK WAS PERFORMED BY ME OR
UNDER MY DIRECT PERSONAL SUPERVISION AND THAT I AM A DULY
LICENSED LAND SURVEYOR UNDER THE LAWS OF THE STATE OF IOWA.

Michael J. Weber *May 2, 2016*
MICHAEL J. WEBER (DATE)

LICENSE NUMBER 15084

MY LICENSE RENEWAL DATE IS DECEMBER 31, 2017

SHEETS COVERED BY THIS SEAL: THIS SHEET

List Corners to be Indexed
Corner Sec Twp Range
NW COR., NE-NE 16 84N 2E