

Diagram illustrating a traverse with bearings and distances. The traverse starts at station 200+32.7, goes to P.I. STA. 210+22.8 (Δ = 6° 30' LT.), then to P.I. STA. 232+52.78 (Δ = 36° 00' LT.), then to P.I. STA. 243+06.2, then to P.I. STA. 256+91.72, and finally to P.I. STA. 2609.0. The diagram includes various angles and distances, with some points labeled (23), (J), and (26).

SURVEY
R-2-E

MADE FOR
IOWA STATE HIGHWAY COMMISSION FOR THE PURPOSE OF R.O.W.
DESCRIPTIONS ON IOWA PRIMARY ROAD NO. 130 FROM THE MAQUOKETA
CAVES STATE PARK EAST TO THE TOWN OF MAQUOKETA.

JOHN D. FRANKLIN
JACKSON COUNTY

R.L.S. NO. 2051
F-1117

SEPT. - OCT. 1959

ALL DISTANCES WERE CAREFULLY MEASURED AND MAY NOT AGREE WITH ROAD SURVEY STATIONING.

FOR COMPLETE INFORMATION ON THIS SURVEY, SEE FIELD NOTES ON FILE IN
AMES OFFICE.

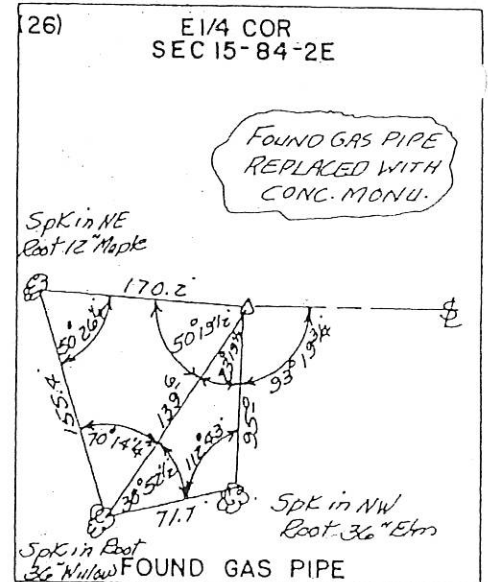
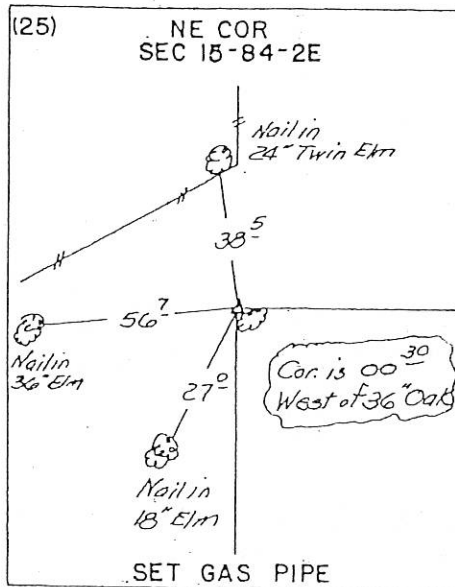
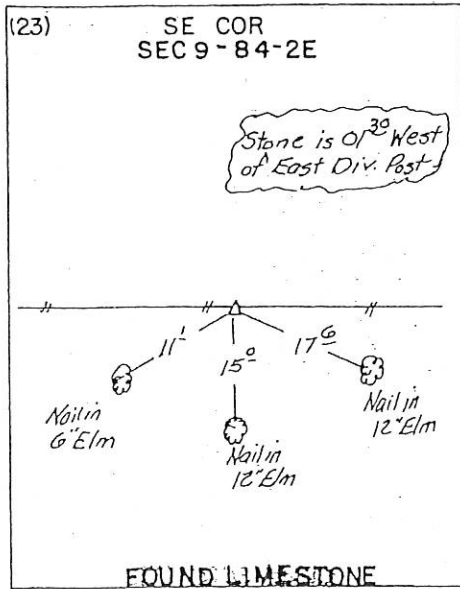
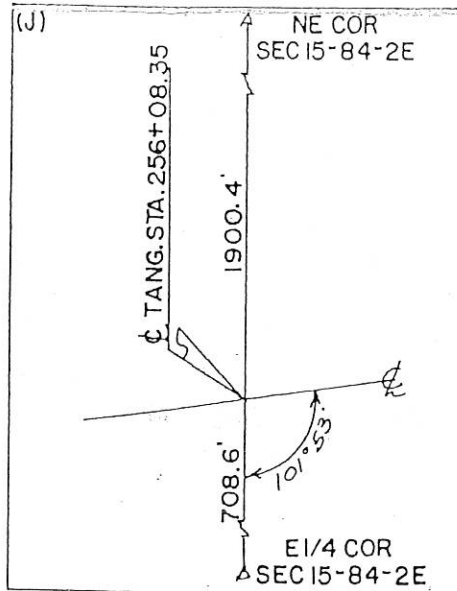
I, HEREBY CERTIFY THAT THIS PLAT IS A TRUE REPRESENTATION OF A SURVEY MADE BY ME, ASSISTED BY JAMES D. FRANKLIN, R.F. POPELKA, R.H. JANS, W.M. MYERS, F.A. NORTON, L.R. MCGUIRE, R.P. VAN HORBECK, ELVIN K IRONS AND R. MCCREA, ALL DULY SWORN, AND IS CORRECT TO THE BEST OF MY KNOWLEDGE.

SIGNED: December 8, 1959

JOHN D. FRANKLIN

R.L.S. NO. 2051





UNITED STATES PUBLIC LAND SURVEY CORNER CERTIFICATE

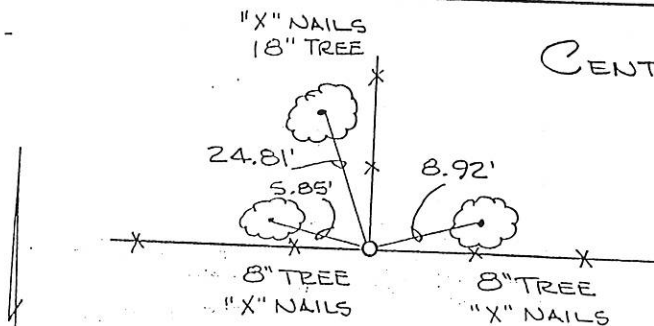
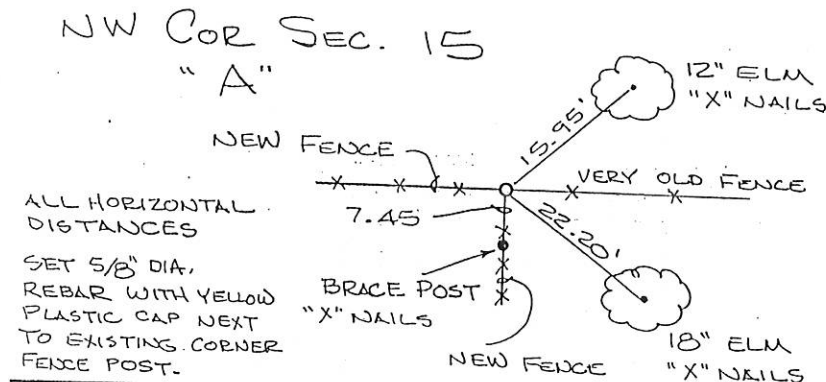
SLSI 9-90

OF

Land Survey Monuments situated in Section 15, Township 84 N, Range 2 E, of the Fifth Principal Meridian, JACKSON County, Iowa.
Previously recorded in NOT APPLICABLE in County Recorder's Office.
(book, page, document number, etc.)

(Show reason for preparing this certificate, the evidence and detailed procedures used in establishing the corner positions and monumentation found or placed.)

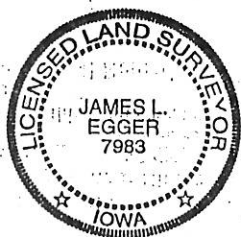
Monument Description and Remarks: THE CENTER OF SECTION 15 WAS SET AT THE INTERSECTION OF AN EXISTING E-W FENCELINE AND A FENCE RUNNING TO THE NORTH. THIS POINT IS ALSO REFERENCED ON A SURVEY BY J.G. THORNE IN 1975, DOC. FOUND IN BOOK 1C, PG. 23. THE NW COR WAS REFERENCED IN THE 1960 HWY. PAVING PLANS FOR HWY 428, AND ON A SURVEY BY J.G. THORNE IN 1977 BOOK 1D, PG. 23., IT WAS A STONE, BUT A NEW FENCE OBLITERATED THE PLAN-VIEW
(Show a minimum of three reference ties to durable physical objects, relevant monuments and physical conditions that will enable recovery of the corner.)



ALL MEASUREMENTS ARE HORIZONTAL
SET 5/8" DIA. REBAR WITH CAP #7983
AT FENCE INTERSECTION

I hereby certify that the survey work was completed and this certificate was prepared by me or under my direct personal supervision and that I am a duly registered land surveyor under the laws of the state of Iowa.

Signature: James L. Egger
Name typed or printed: JAMES L. EGGER P.E. & L.S.
Date: JUNE 17, 1998 Reg. No. 7983



SEAL

Corners	List Corners to be Indexed	Section	Twp	Range
NW COR	15	84 N	2 E	
CENTER	15	84 N	2 E	
SE COR	9	84 N	2 E	
SW COR	10	84 N	2 E	
NE COR	16	84 N	2 E	



Document 05-3274

Book 2 Page 379 Type 06 023 Pages 1
Date 8/17/2005 Time 10:36 AM
Rec Amt \$7.00

PHYLLIS M. GERLACH, RECORDER
JACKSON COUNTY IOWA

UNITED STATES PUBLIC LAND SURVEY CORNER CERTIFICATE
OF

Land Survey Monument situated in Section 15, Township 84N, Range 2E, of the Fifth Principal Meridian,
JACKSON County, Iowa. Previously recorded in NOT APPLICABLE in County Recorder's Office.
(Book, Page, Document Number, etc.)

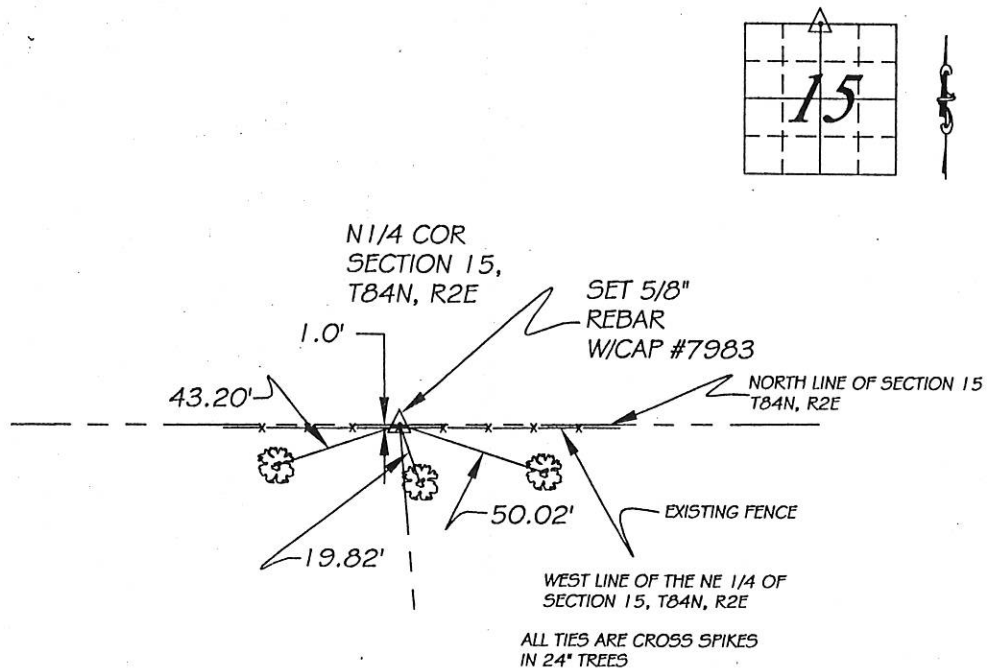
(Show reason for preparing this certificate, the evidence and detailed procedures used in establishing the corner positions and monumentation found or placed.)

Monument Description and Remarks: THE NORTH QUARTER CORNER OF SECTION 15 WAS SET A 5/8" REBAR,
1 FOOT NORTH OF AN EXISTING FENCE. ALL TIES ARE CROSS NAILS IN 24 INCH TREES.

WE SET THIS CORNER BY SPLITTING THE DIFFERENCE BETWEEN THE NORTHWEST AND NORTHEAST CORNERS OF SECTION 15

PLAN - VIEW

(Show a minimum of three reference ties to durable physical objects, relevant monuments and physical conditions that will enable recovery of the corner.)



I hereby certify that the survey work was completed and
this certificate was prepared by me or under my direct
personal supervision and that I am a duly registered
land surveyor under the laws of the state of Iowa.

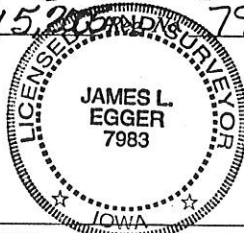
Signature:

James L. Egger P.E. & L.S.

Dated:

Aug. 15, 2005 7983

SEAL



List Corners to be Indexed

Corners	Section	Twp.	Range
N1/4 CORNER	15	84N	2E



Document 05-3366

Book 2 Page 383 Type 06 023 Pages 1
Date 8/23/2005 Time 11:07 AM
Rec Amt \$7.00

PHYLLIS M. GERLACH, RECORDER
JACKSON COUNTY IOWA

Prepared by Egger Engineering and Land
Surveying, PC 2395 Tech Drive Suite 2
Bettendorf, Iowa 52722

UNITED STATES PUBLIC LAND SURVEY CORNER CERTIFICATE OF

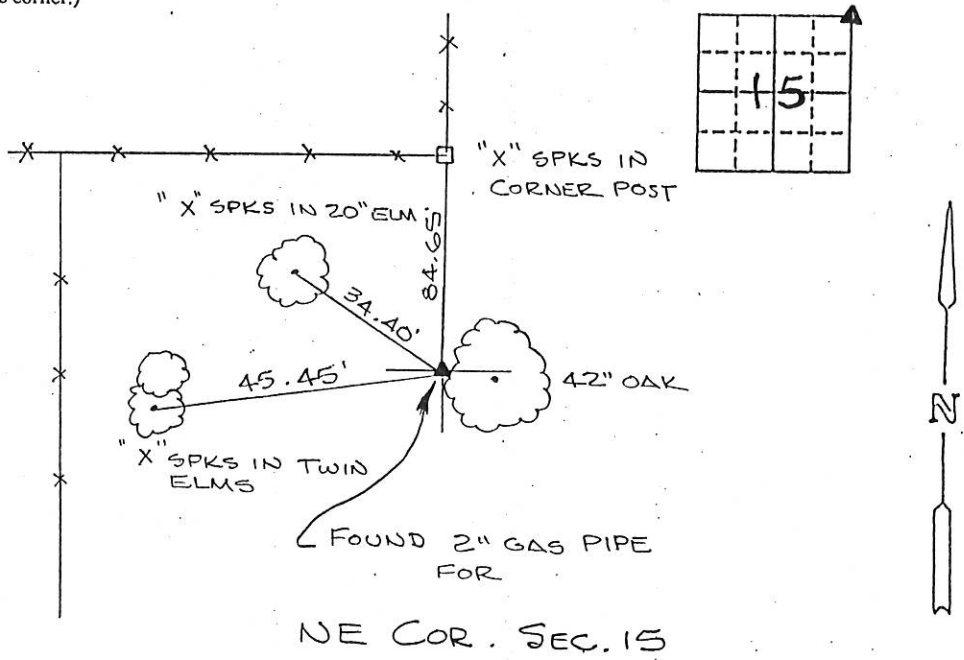
Land Survey Monuments situated in Section 15, Township 84N, Range 2E, of the Fifth Principal
Meridian, JACKSON County, Iowa. Previously recorded in Book 1, Pg 252
in County Recorder's Office. (book, page, document number, etc.)

(Show reason for preparing this certificate, the evidence and detailed procedures used in establishing the corner positions and
monumentation found or placed.)

Monument Description and Remarks: FOUND 2" GAS PIPE ON WEST SIDE OF 42" DIA.
OAK TREE. SAME POINT IS MENTIONED IN A 1995 COR. CERTIF.
FILED IN BOOK 1, Pg 252. NO OLD TIES WERE FOUND, THEREFORE,
WE SET NEW TIES TO THIS CORNER MONUMENT.

PLAN - VIEW

(Show a minimum of three reference ties to durable physical object, relevant monuments and physical conditions that will enable
recovery of the corner.)

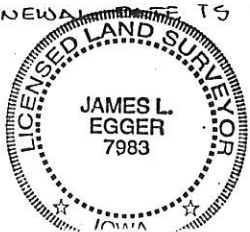


I hereby certify that the survey work was completed and
this certificate was prepared by me or under my direct
supervision and that I am a duly registered land
surveyor under the laws of the state of Iowa.

Signature: James L. Egger
James L. Egger L.S.

Date: Aug 22, 2005 Reg. No. 7983
LICENSE RENEWAL DATE IS 12/31/05

SEAL



Corners	Section	Twp	Range
NE	15	84N	2E



Document 06-124

Book 2 Page 405 Type 06 023 Pages 1

Date 1/11/2006 Time 8:19 AM

Rec Amt \$7.00

PHYLLIS M. GERLACH, RECORDER
JACKSON COUNTY IOWA

PREPARED BY: MICHAEL J. WEBER, WEBER SURVEYING, LLC, 26789 46TH AVE, BERNARD, IA 52032 (563) 879-4173

UNITED STATES PUBLIC LAND SURVEY CORNER CERTIFICATE OF

LAND SURVEY MONUMENTS SITUATED IN SECTION 15, TOWNSHIP 84 NORTH, RANGE 2 EAST
OF THE FIFTH PRINCIPAL MERIDIAN, JACKSON COUNTY, IOWA.
PREVIOUSLY RECORDED NONE UNLESS OTHERWISE NOTED

(book, page, document number, etc.)

(Show reason for preparing this certificate, the evidence and detailed procedures used in establishing the corner positions and nonumentation found or placed.)

Monument Description and Remarks:

THE FOLLOWING CORNERS ARE SHOWN ON THE PLAT OF SURVEY OF PARCEL A IN SECTION 15, T.84N. R.2E. OF THE 5TH PM IN JACKSON COUNTY, IOWA

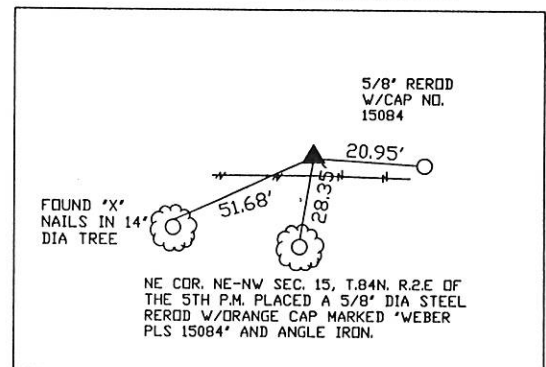
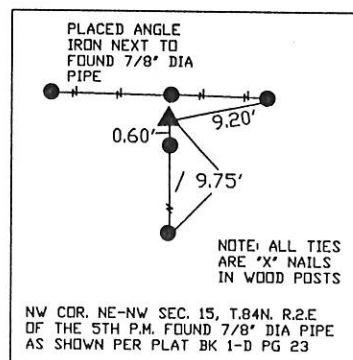
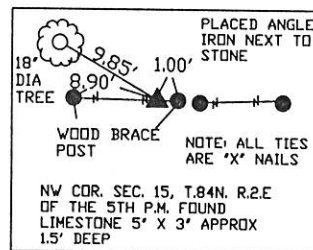
-NW COR. SEC. 15, T.84N. R.2E OF THE 5TH P.M. FOUND LIMESTONE 1.5' DEEP AS SHOWN IN SEC. COR CERT. IN JACKSON CO. ENGR. OFFICE AND SHOWN IN HIGHWAY PLANS OF PRIMARY ROAD NO. 130, PROJECT NO. F-1117

-NW COR. NE-NW SEC. 15, T.84N. R.2E OF THE 5TH P.M. FOUND 7/8" DIA PIPE AS SHOWN PER PLAT BK 1-D PG 23 FILED APRIL 14, 1977 IN THE JACKSON COUNTY RECORDERS OFFICE

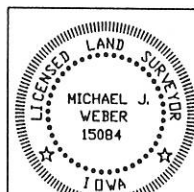
-NE COR. NE-NW SEC. 15, T.84N. R.2E OF THE 5TH P.M. PLACED A 5/8" DIA STEEL REROD W/ORANGE CAP MARKED "WEBER PLS 15084" ON LINE WITH A LINE EXTENDED TO THE EAST FROM THE TWO PIPES FOUND ON THE NORTH LINE OF THE NE-NW OF SEC. 15 AS SHOWN IN PLAT BOOK 1-D PAGE 23 AND MIDWAY BETWEEN THE FOUND STONE AT THE NW COR. OF SEC. 15 AND A FOUND PIPE AT THE NE COR. OF SEC. 15 AS SHOWN IN SEC. COR CERT. IN JACKSON CO. ENGR. OFFICE AND SHOWN IN HIGHWAY PLANS OF PRIMARY ROAD NO. 130, PROJECT NO. F-1117, & COR. CERT. IN BOOK 2, PAGE 383

(Show a minimum of three reference ties to durable physical objects, relevant monuments and physical conditions that will enable recovery of the corner.)

PLAN - VIEW



DWG. NO. KLOCKE



I HEREBY CERTIFY THAT THIS LAND SURVEYING DOCUMENT WAS PREPARED AND THE RELATED SURVEY WORK WAS PERFORMED BY ME OR UNDER MY DIRECT PERSONAL SUPERVISION AND THAT I AM A DULY LICENSED LAND SURVEYOR UNDER THE LAWS OF THE STATE OF IOWA.

Michael J. Weber January 2, 2006
MICHAEL J. WEBER (DATE)

LICENSE NUMBER 15084

MY LICENSE RENEWAL DATE IS DECEMBER 31, 2007

SHEETS COVERED BY THIS SEAL: 1

List Corners to be Indexed

Corner	Sec	Twp	Range
NW Cor.	15	84N	2E
NW Cor. NE-NW	15	84N	2E
NE Cor. NE-NW	15	84N	2E