

1998 FEB 27 A 11: 16

IIV ENGINEERS & SURVEYORS, P.C. 4155 PENNSYLVANIA AVE, DUBUQUE, IOWA, (319) 556-2464

JOHN M. TRANMER  
RECORDER

# UNITED STATES PUBLIC LAND SURVEY CORNER CERTIFICATE OF

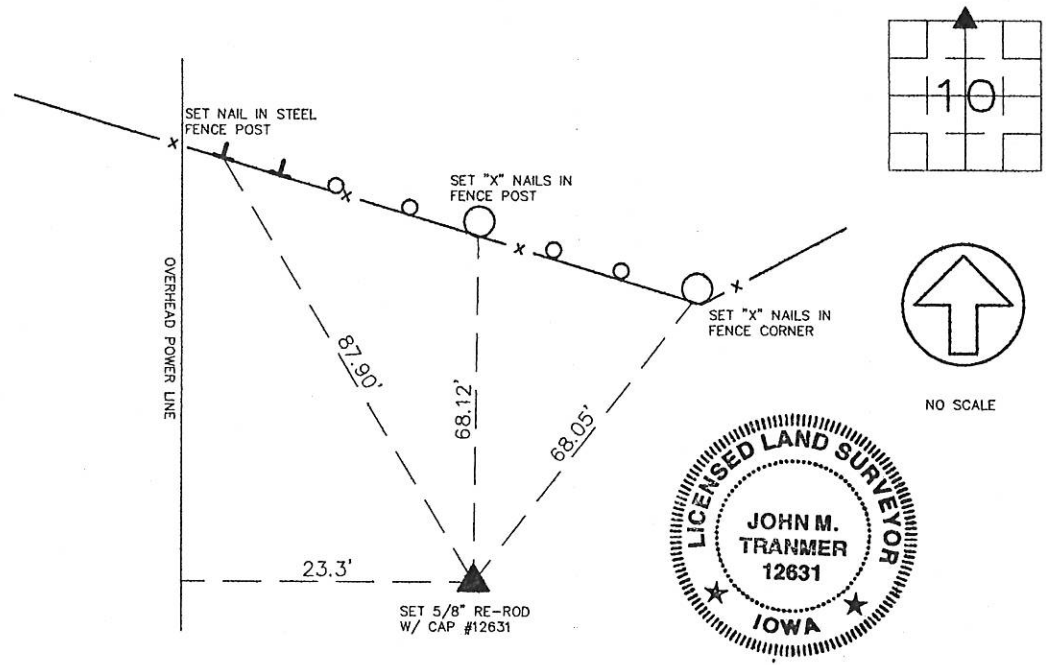
LAND SURVEY MONUMENTS SITUATED IN SECTION 10, TOWNSHIP 84 NORTH, RANGE 2 EAST  
OF THE FIFTH PRINCIPAL MERIDIAN, JACKSON COUNTY, IOWA.  
PREVIOUSLY RECORDED IN \_\_\_\_\_ IN COUNTY RECORDER'S OFFICE.

(Show reason for preparing this certificate, the evidence and detailed procedures used in establishing the corner positions and monumentation found or placed.)

Monument Description and Remarks: \_\_\_\_\_  
N 1/4 CORNER, SECTION 10, T84N, R2E - SET 5/8" ROD W/ CAP #12631, AT MIDPOINT OF N.W. CORNER  
AND N.E. CORNER OF SAID SEC. 10. SET ROD IS ABOUT 235' +/- SOUTH OF CENTER LINE 85TH STREET.

## PLAN - VIEW

(Show a minimum of three reference ties to durable physical objects, relevant monuments and physical conditions that will enable recovery of the corner.)



I HEREBY CERTIFY THAT THE SURVEY WORK WAS COMPLETED AND THIS CERTIFICATE WAS PREPARED BY ME OR UNDER MY DIRECT PERSONAL SUPERVISION AND THAT I AM A DULY REGISTERED LAND SURVEYOR UNDER THE LAWS OF THE STATE OF IOWA.

John M. Tranmer  
JOHN M. TRANMER REG. NO. 12631  
DATE: 2-26-98  
MY REGISTRATION EXPIRES DECEMBER 31, 1998

### LIST CORNERS TO BE INDEXED

CORNERS	SECTION	TWP	RANGE
N 1/4 CORNER	10	T84N	R2E

**IIV ENGINEERS AND SURVEYORS P.C.**  
Iowa, Illinois, Wisconsin  
4155 Pennsylvania Ave.  
Dubuque, Ia. 52002  
(319) 556-2464  
Guttenberg, IA  
Galena, IL  
Cuba City, WI

**MONUMENT RECORD**  
COUNTY: JACKSON  
TOWNSHIP: SOUTH FORK  
DATE: 2-03-98 FIELD BOOK NO. 366 PROJ. NO. 977154 INDEX NO. \_\_\_\_\_  
REVISED: \_\_\_\_\_