

COPY

FILE NO. 04-667
BOOK 2 PAGE 230
04 FEB 18 PM 12:25
PHYLLIS M. GERLACH
JACKSON COUNTY, IOWA
RECORDER
Feb 11, 2004

Prepared by: SCHNEIDER Land Surveying and Planning, Inc. P.O. Box 105 Peosta, Iowa 52068 563-556-9055

UNITED STATES PUBLIC LAND SURVEY CORNER CERTIFICATE OF

Land Survey Monuments situated in Section 9, Township 86 North, Range 3 East of the Fifth Principal Meridian, Jackson County, Iowa.

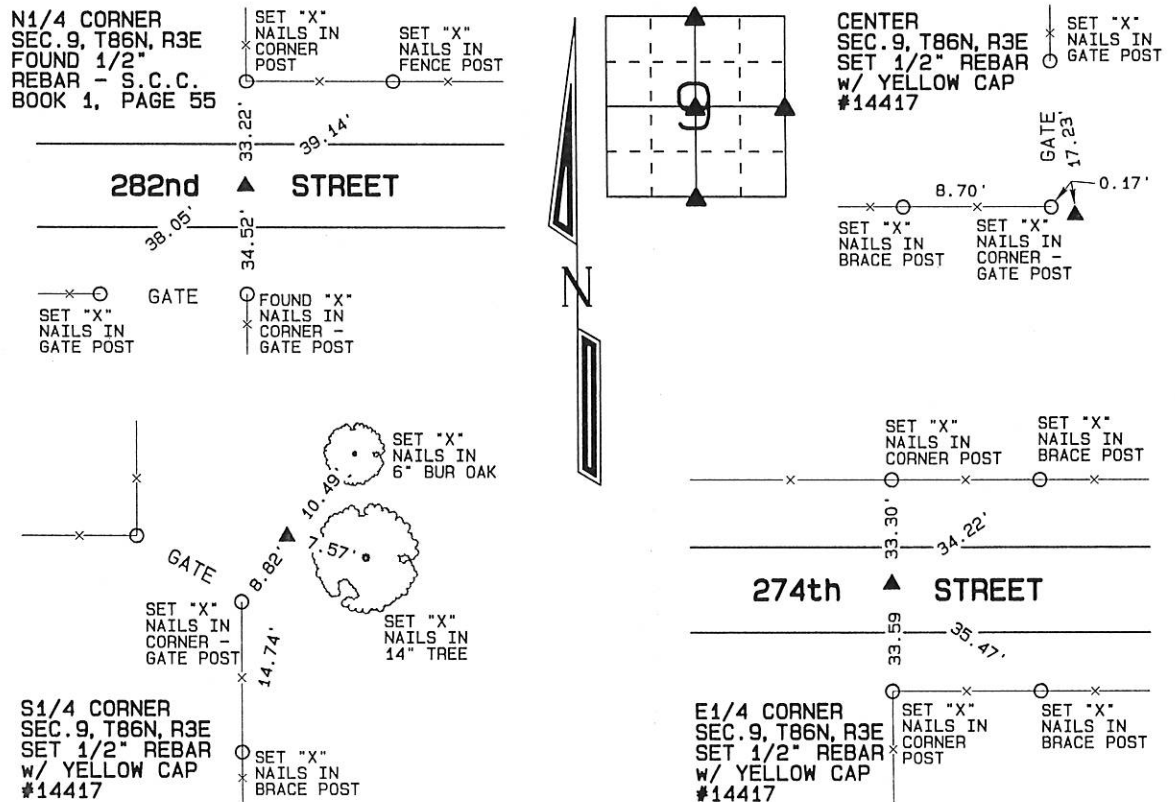
Previously recorded N1/4 - S.C.C. BOOK 1, PAGE 55
(BOOK, PAGE / INST. NO. / CABINET, SLIDE)

(Show reason for preparing this certificate, the evidence and detailed procedures used in establishing the corner positions and monumentation found or placed.)

Monument Description and Remarks: A 1/2" REBAR WAS FOUND AT THE N1/4 CORNER OF SEC. 9, T86N, R3E AS ILLUSTRATED IN THE SECTION CORNER CERTIFICATE FILED IN S.C.C. BOOK 1, PAGE 55. THE CORNER WAS RETIED BECAUSE ONLY ONE TIE REMAINED. THE REBAR WAS TIED AND USED AS THE N1/4 OF SAID SECTION 9. THE CENTER OF SEC. 9, T86N, R3E WAS ESTABLISHED USING EXISTING OCCUPATION EVIDENCE. THE S1/4 OF SEC. 9, T86N, R3E WAS ESTABLISHED BY EXTENDING A LINE FROM THE SW CORNER THROUGH AN OCCUPATION FENCE INTERSECTION 33.00' (2 RODS) AS ILLUSTRATED IN THE PLAT RECORDED IN BOOK 1-A, PAGE 221. THE E1/4 CORNER OF SEC. 9, T86N, R3E WAS ESTABLISHED AT THE MIDPOINT BETWEEN THE EXISTING R.O.W. FENCES.

PLAN - VIEW

(Show a minimum of three reference ties to durable physical objects, relevant monuments and physical conditions that will enable recovery of the corner.)

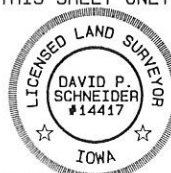


I hereby certify that this land surveying document was prepared and the related survey work was performed by me or under my direct personal supervision and that I am a duly licensed Land Surveyor under the laws of the State of Iowa.

David P. Schneider 2/16/2004
David P. Schneider P.L.S. #14417 Date:
My license renewal date is December 31, 2003.

Pages or sheets covered by this seal: THIS SHEET ONLY

SCHNEIDER
Land Surveying & Planning, Inc.
P.O. Box 105 Peosta, Iowa 52068
Ph. #563-556-9055 Fax#563-556-9054

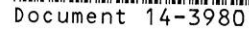


List Corners to be Indexed

Corners	Section	Twp	Range
N1/4	9	86N	3E
CENTER	9	86N	3E
S1/4	9	86N	3E
E1/4	9	86N	3E

JOB NO. 638

2 " 2 Page 230



ARLENE SCHAUF, RECORDER/REGISTRAR
JACKSON COUNTY IOWA

UNITED STATES PUBLIC LAND SURVEY CORNER CERTIFICATE
OF

(book, page, document number, etc.)

Monument Description and Remarks:

-SE COR. NE-SW, SEC. 9, T.86N. R.3E. OF THE 5TH P.M. PLACED A 5/8" ROD W/ ORANGE PLASTIC CAP MARKED "WEBER PLS 15084", ESTABLISHED CORNER AT THE INTERSECTION OF THE FENCELINE FROM THE WEST WITH THE EAST LINE OF THE SOUTH 1/2 OF THE SW 1/4 OF SAID SECTION 9.

PLAN - VIEW



SW COR, NE-SW	9	86N	3E
SE COR, NE-SW	9	86N	3E