



Document 08-2580

PLAT BOOK 1-S PAGE 44
Kress, Norbert & Shirley
Parcel A in 7-86-3

#08-2581

Book 2 Page 625 Type 15 001 Pages 1
Date 7/07/2008 Time 10:09 AM
Rec Amt \$7.00

ARLENE SCHAUF, RECORDER/REGISTRAR
JACKSON COUNTY IOWA

PREPARED BY: MICHAEL J. WEBER, WEBER SURVEYING, LLC, 26789 46TH AVE, BERNARD, IA 52032 (563) 879-4173

UNITED STATES PUBLIC LAND SURVEY CORNER CERTIFICATE OF

LAND SURVEY MONUMENTS SITUATED IN SECTION 7, TOWNSHIP 86 NORTH, RANGE 3 EAST
OF THE FIFTH PRINCIPAL MERIDIAN, JACKSON COUNTY, IOWA.
PREVIOUSLY RECORDED SEE NOTES BELOW

(book, page, document number, etc.)

(Show reason for preparing this certificate, the evidence and detailed procedures used in establishing the corner positions and monumentation found or placed.)

Monument Description and Remarks:

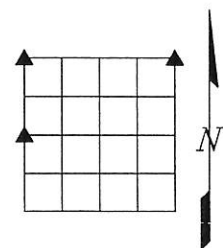
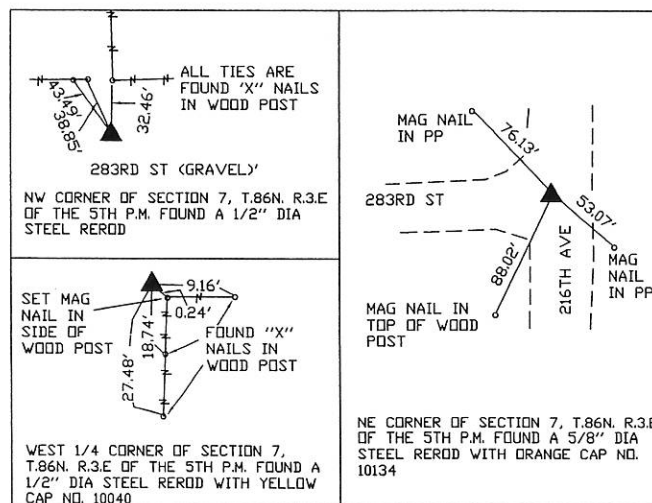
-NW CORNER OF SECTION 7, T.86N. R.3.E OF THE 5TH P.M. FOUND A 1/2" DIA STEEL REROD, PREVIOUSLY RECORDED AS THE NE CORNER OF SECTION 12, T.86N. R.2.E OF THE 5TH P.M. IN SECTION CORNER CERTIFICATE BOOK 1 PAGE 110

-WEST 1/4 CORNER OF SECTION 7, T.86N. R.3.E OF THE 5TH P.M. FOUND A 1/2" DIA STEEL REROD WITH YELLOW CAP NO. 10040, PREVIOUSLY RECORDED AS THE EAST 1/4 CORNER OF SECTION 12, T.86N. R.2.E OF THE 5TH P.M. IN SECTION CORNER CERTIFICATE BOOK 1 PAGE 110

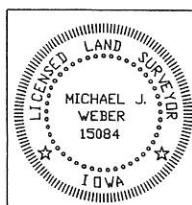
-NE CORNER OF SECTION 7, T.86N. R.3.E OF THE 5TH P.M. FOUND A 5/8" DIA STEEL REROD WITH ORANGE CAP NO. 10134 AT THE INTERSECTION OF 283RD STREET AND 216TH AVENUE.

(Show a minimum of three reference ties to durable physical objects, relevant monuments and physical conditions that will enable recovery of the corner.)

PLAN - VIEW



DWG. NO. KRESS



I HEREBY CERTIFY THAT THIS LAND SURVEYING DOCUMENT WAS
PREPARED AND THE RELATED SURVEY WORK WAS PERFORMED BY ME OR
UNDER MY DIRECT PERSONAL SUPERVISION AND THAT I AM A DULY
LICENSED LAND SURVEYOR UNDER THE LAWS OF THE STATE OF IOWA.

Michael J. Weber July 1, 2008
MICHAEL J. WEBER (DATE)
LICENSE NUMBER 15084
MY LICENSE RENEWAL DATE IS DECEMBER 31, 2009

SHEETS COVERED BY THIS SEAL: THIS SHEET

List Corners to be Indexed			
Corner	Sec	Twp	Range
NW CORNER	7	86N	3E
WEST 1/4 COR.	7	86N	3E
NE CORNER	7	86N	3E

Book 2 Page 625



Document 12-882

Book 3 Page 42 Type 15 001 Pages 1
Date 2/29/2012 Time 3:31 PM
Rec Amt \$7.00

ARLENE SCHAUF, RECORDER/REGISTRAR
JACKSON COUNTY IOWA

PREPARED BY: MICHAEL J. WEBER, WEBER SURVEYING, LLC, 26789 46TH AVE, BERNARD, IA 52032 (563) 879-4173

UNITED STATES PUBLIC LAND SURVEY CORNER CERTIFICATE OF

LAND SURVEY MONUMENTS SITUATED IN SECTION 7, TOWNSHIP 86 NORTH, RANGE 3 EAST
OF THE FIFTH PRINCIPAL MERIDIAN, JACKSON COUNTY, IOWA.
PREVIOUSLY RECORDED SEE NOTES BELOW

(book, page, document number, etc.)

(Show reason for preparing this certificate, the evidence and detailed procedures used in establishing the corner positions and monumentation found or placed.)

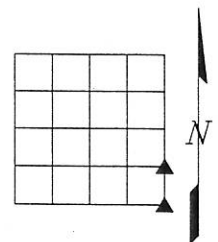
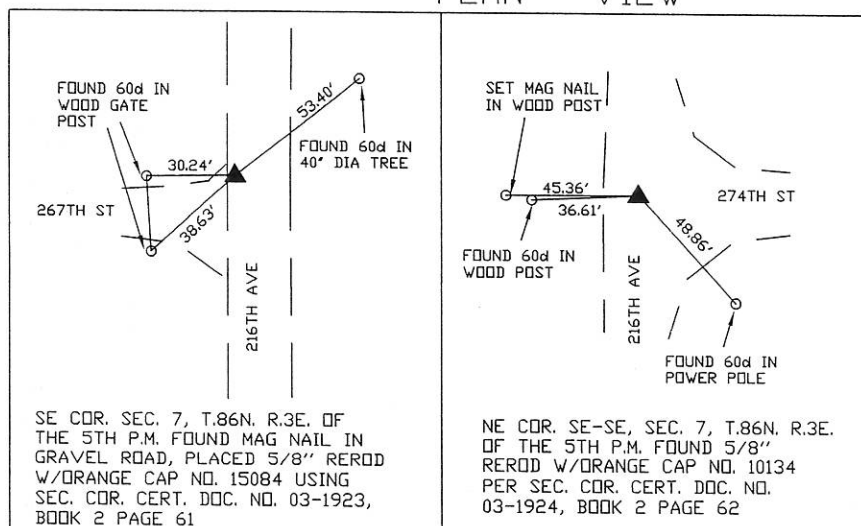
Monument Description and Remarks:

-SE COR. SEC. 7, T.86N. R.3E. OF THE 5TH P.M. FOUND MAG NAIL IN GRAVEL ROAD, PLACED 5/8" REROD W/ORANGE CAP NO. 15084 USING PREVIOUSLY RECORDED SECTION CORNER CERTIFICATE DOC. NO. 03-1923, BOOK 2 PAGE 61, RE-ESTABLISHED TIES

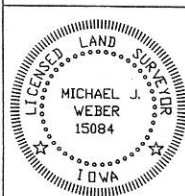
-NE COR. SE-SE, SEC. 7, T.86N. R.3E. OF THE 5TH P.M. FOUND 5/8" REROD W/ORANGE CAP NO. 10134 PER SEC. COR. CERT. DOC. NO. 03-1924, BOOK 2 PAGE 62, RE-ESTABLISHED TIES

(Show a minimum of three reference ties to durable physical objects, relevant monuments and physical conditions that will enable recovery of the corner.)

PLAN - VIEW



DWG. NO.
2012\DELANE-J



I HEREBY CERTIFY THAT THIS LAND SURVEYING DOCUMENT WAS PREPARED AND THE RELATED SURVEY WORK WAS PERFORMED BY ME OR UNDER MY DIRECT PERSONAL SUPERVISION AND THAT I AM A DULY LICENSED LAND SURVEYOR UNDER THE LAWS OF THE STATE OF IOWA.
Michael J. Weber February 22, 2012
MICHAEL J. WEBER
LICENSE NUMBER 15084
MY LICENSE RENEWAL DATE IS DECEMBER 31, 2013
SHEETS COVERED BY THIS SEAL: THIS SHEET

Corner	Sec	Twp	Range
SE CORNER	7	86N	3E
NE COR. SE-SE	7	86N	3E