

Document 14-2730

Book 3 Page 145 Type 15 001 Pages 1
Date 8/07/2014 Time 2:33 PM
Rec Amt \$7.00

ARLENE SCHAUF, RECORDER/REGISTRAR
JACKSON COUNTY IOWA

PREPARED BY: MICHAEL J. WEBER, WEBER SURVEYING, LLC, 26789 46TH AVE, BERNARD, IA 52032 (563) 879-4173

UNITED STATES PUBLIC LAND SURVEY CORNER CERTIFICATE OF

LAND SURVEY MONUMENTS SITUATED IN SECTION 36, TOWNSHIP 86 NORTH, RANGE 3 EAST
OF THE FIFTH PRINCIPAL MERIDIAN, JACKSON COUNTY, IOWA.
PREVIOUSLY RECORDED NONE UNLESS OTHERWISE NOTED

(book, page, document number, etc.)

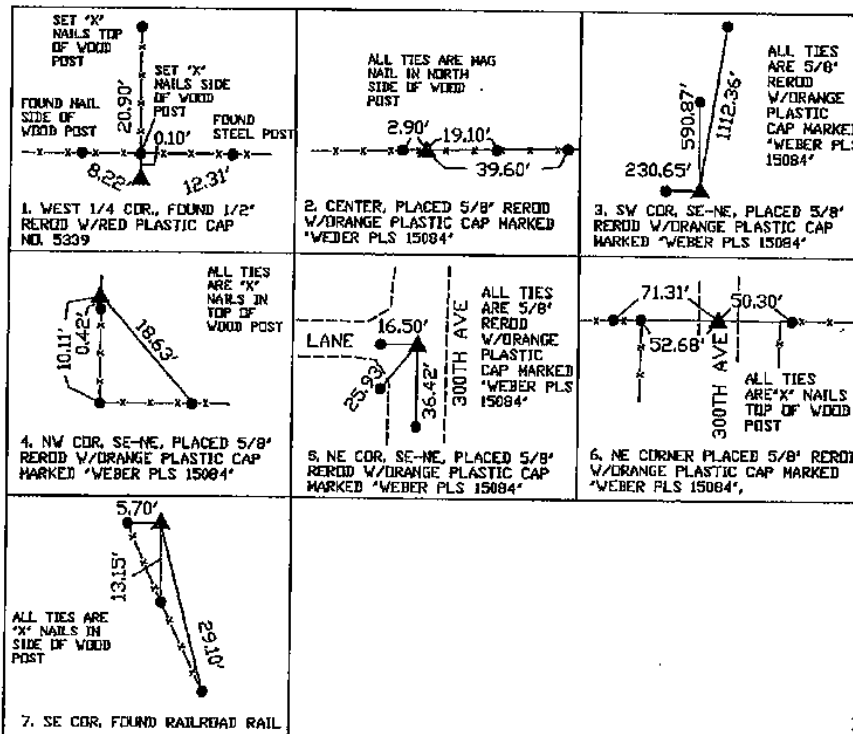
(Show reason for preparing this certificate, the evidence and detailed procedures used in establishing the corner positions and monumentation found or placed.)

Monument Description and Remarks:

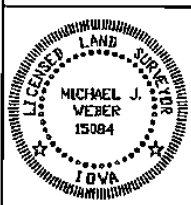
1. WEST 1/4 COR., FOUND 1/2 REROD W/RED PLASTIC CAP NO. 5339, PREVIOUSLY RECORDED IN BOOK 1 PAGE 205, ESTABLISHED NEW TIES
2. CENTER, PLACED 5/8" REROD W/ORANGE PLASTIC CAP MARKED "WEBER PLS 15084", ESTABLISHED CORNER AT THE INTERSECTION OF THE FENCELINE RUNNING EAST & WEST WITH THE LINE BETWEEN THE CALCULATED N 1/4 AND S 1/4 CORNERS.
3. SW COR. SE-NE, PLACED 5/8" REROD W/ORANGE PLASTIC CAP MARKED "WEBER PLS 15084", ESTABLISHED CORNER MIDWAY AND ONLINE BETWEEN THE CENTER AND CALCULATED EAST 1/4 CORNER.
4. NW COR. SE-NE, PLACED 5/8" REROD W/ORANGE PLASTIC CAP MARKED "WEBER PLS 15084", ESTABLISHED CORNER INLINE WITH THE FENCELINE RUNNING NORTH & SOUTH WITH THE CALCULATED 1/4 1/4 LINE RUNNING EAST & WEST.
5. NE COR. SE-NE, PLACED 5/8" REROD W/ORANGE PLASTIC CAP MARKED "WEBER PLS 15084", ESTABLISHED CORNER FROM THE NE CORNER A 1/4 OF THE DISTANCE AND ON LINE BETWEEN THE NE COR. AND THE SE COR.
6. NE COR. PLACED 5/8" REROD W/ORANGE PLASTIC CAP MARKED "WEBER PLS 15084", ESTABLISHED CORNER, ESTABLISHED CORNER AT THE INTERSECTION OF FENCELINE RUNNING EAST AND WEST WITH THE CENTER OF ROAD RIGHT OF WAY AS SHOWN ON ROAD PLANS SRP 361.
7. SE COR. FOUND RAILROAD RAIL PER SECTION TIE FOUND IN THE COUNTY ENGINEERS OFFICE INDEXED AS THE NE COR SEC. 1, T86N R3E

PLAN - VIEW

(Show a minimum of three reference ties to durable physical objects, relevant monuments and physical conditions that will enable recovery of the corner.)



DWG 13079-B-C



I HEREBY CERTIFY THAT THIS LAND SURVEYING DOCUMENT WAS PREPARED AND THE RELATED SURVEY WORK WAS PERFORMED BY ME OR UNDER MY DIRECT PERSONAL SUPERVISION AND THAT I AM A DULY LICENSED LAND SURVEYOR UNDER THE LAWS OF THE STATE OF IOWA.

Michael J. Weber July 9, 2014
(DATE)

LICENSE NUMBER 15084

MY LICENSE RENEWAL DATE IS DECEMBER 31, 2015

SHEETS COVERED BY THIS SEAL :

List Corners to be Indexed

Corner	Sec Tap Range
NE COR.	36-86N-3E
SE COR.	36-86N-3E
NE COR. SE-NE	36-86N-3E
NW COR. SE-NE	36-86N-3E
SW COR. SE-NE	36-86N-3E
CENTER	36-86N-3E
WEST 1/4 COR.	36-86N-3E

Document 19-1025

Type 15 001 Pages 1
Date 4/15/2019 Time 3:57 PM
Rec Amt \$7.00

ARLENE SCHAUF, RECORDER/REGISTRAR
JACKSON COUNTY IOWA

PREPARED BY: MICHAEL J. WEBER, WEBER SURVEYING, LLC, 26789 46TH AVE, BERNARD, IA 52032 (563) 879-4173

UNITED STATES PUBLIC LAND SURVEY CORNER CERTIFICATE OF

LAND SURVEY MONUMENTS SITUATED IN SECTION 36, TOWNSHIP 86 NORTH, RANGE 3 EAST
OF THE FIFTH PRINCIPAL MERIDIAN, JACKSON COUNTY, IOWA.
PREVIOUSLY RECORDED NONE UNLESS OTHERWISE NOTED

(book, page, document number, etc.)

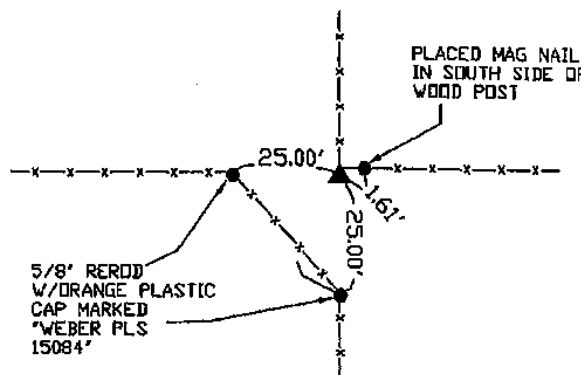
(Show reason for preparing this certificate, the evidence and detailed procedures used in establishing the corner positions and monumentation found or placed.)

Monument Description and Remarks:

NE COR. NW-NE, PLACED 5/8" DIA. REROD W/ORANGE PLASTIC CAP MARKED "WEBER PLS 15084",
ESTABLISHED CORNER AT THE INTERSECTION OF FENCELINE RUNNING NORTH AND EAST

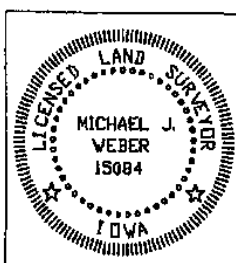
PLAN - VIEW

(Show a minimum of three reference ties to durable physical objects, relevant monuments and physical conditions that will enable recovery of the corner.)



NE COR. NW-NE, PLACED
5/8" REROD W/ORANGE
PLASTIC CAP MARKED
"WEBER PLS 15084"

DWG: 17029



I HEREBY CERTIFY THAT THIS LAND SURVEYING DOCUMENT WAS
PREPARED AND THE RELATED SURVEY WORK WAS PERFORMED BY ME OR
UNDER MY DIRECT PERSONAL SUPERVISION AND THAT I AM A DULY
LICENSED LAND SURVEYOR UNDER THE LAWS OF THE STATE OF IOWA.

Michael J. Weber March 9, 2019
MICHAEL J. WEBER (DATE)

LICENSE NUMBER 15084

MY LICENSE RENEWAL DATE IS DECEMBER 31, 2019

SHEETS COVERED BY THIS SEAL: *This sheet
Sheet Only*

List Corners to be Indexed
Corner Sec Twp Range
NE COR. NW-NE 36-86N-3E