

99 0601

FILE NO. 300K 1 PAGE 365

99 FEB 12 AM 9:58

PHYLLIS M. GERLACH
JACKSON COUNTY, IOWA

RECORDER

Prepared by: SCHNEIDER Land Surveying and Planning 2640 J.F.K. Rd Dubuque, Iowa 319-556-9055

UNITED STATES PUBLIC LAND SURVEY CORNER CERTIFICATE OF

Land Survey Monuments situated in Section 33, Township 86 North, Range 3 East of the Fifth Principal Meridian, Jackson County, Iowa. Previously recorded

(Show reason for preparing this certificate, the evidence and detailed procedures used in establishing the corner positions and monumentation found or placed.)

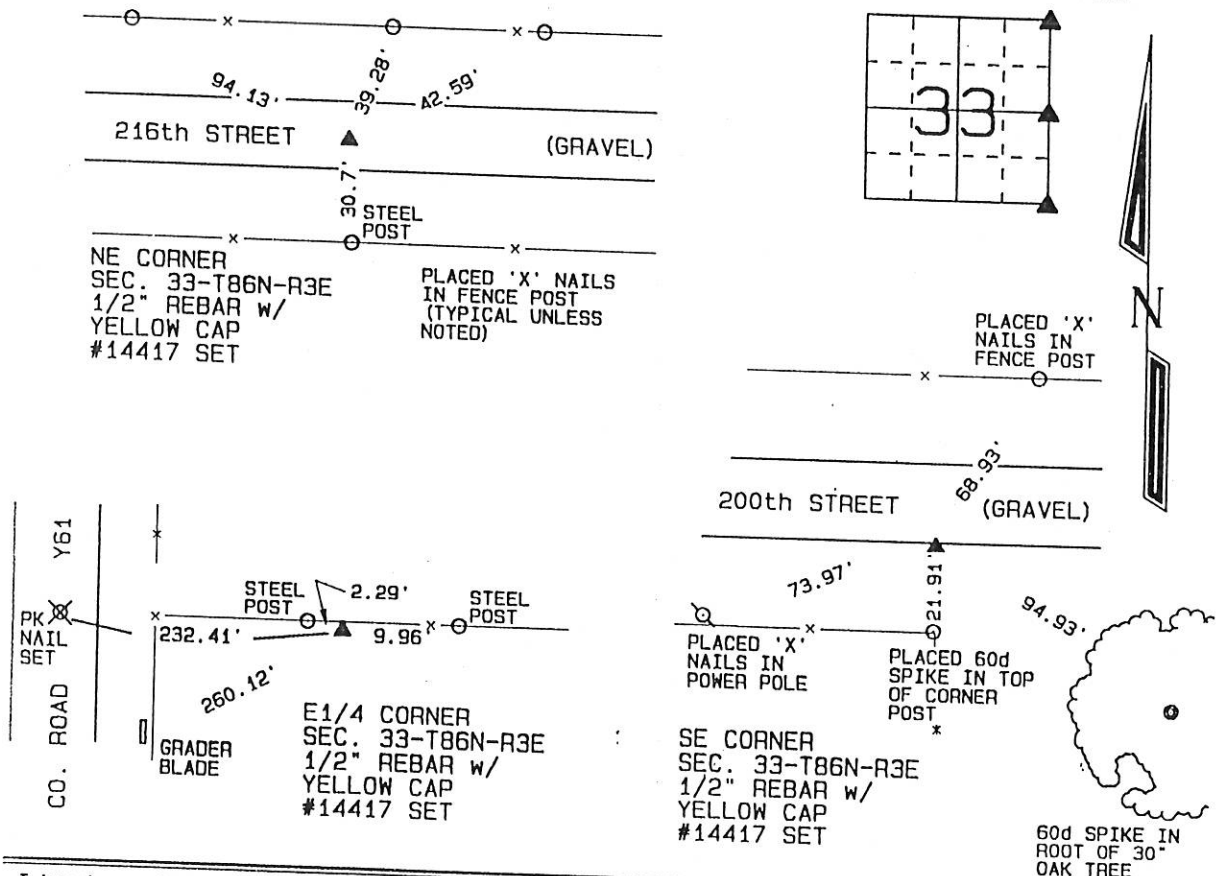
Monument Description and Remarks:

ESTABLISHED THE LOCATIONS OF THE SOUTHEAST AND THE NORTHEAST CORNERS USING EXISTING OCCUPATION LINES AND INFORMATION RELATED TO COUNTY ROAD PROJECT S-3031(1) --50--49.

THE EAST QUARTER CORNER WAS ESTABLISHED ON A STRAIGHT LINE FROM THE NORTHEAST CORNER TO THE SOUTHEAST QUARTER AT THE EAST-WEST QUARTER LINE/OCCUPATION LINE FENCE.

PLAN - VIEW

(Show a minimum of three reference ties to durable physical objects, relevant monuments and physical conditions that will enable recovery of the corner.)



I hereby certify that this land surveying document was prepared and the related survey work was performed by me or under my direct personal supervision and that I am a duly licensed Land Surveyor under the laws of the State of Iowa.

David P. Schneider P.L.S. #14417 Date: 2/11/99
My license renewal date is December 31, 1999.

Pages or sheets covered by this seal: THIS SHEET ONLY

SEAL



List Corners to be Indexed

Corners	Section	Twp	Range
NE	33	86	3E
E1/4	33	86	3E
SE	33	86	3E