

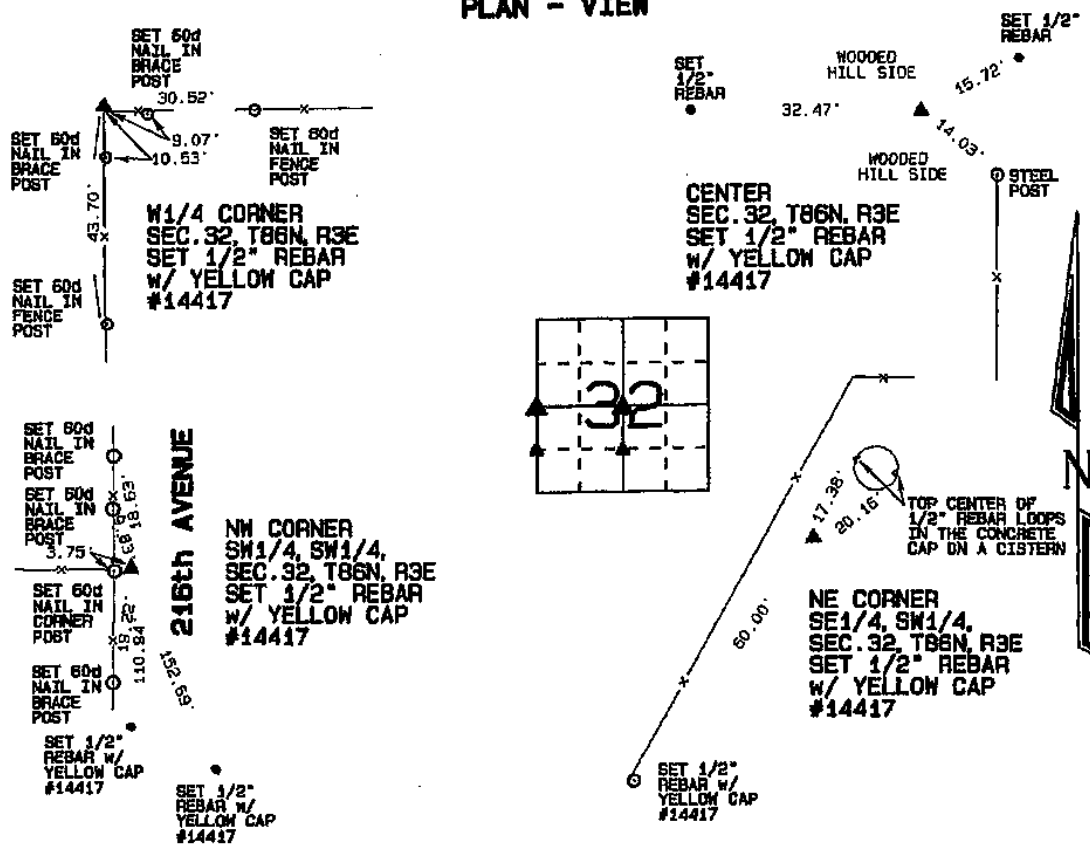
ARLENE SCHAUF, RECORDER/REGISTRAR
JACKSON COUNTY IOWA

Prepared by: SCHNEIDER Land Surveying and Planning, Inc. P.O. Box 128 Farley, Iowa 52048 563-744-3631

UNITED STATES PUBLIC LAND SURVEY CORNER CERTIFICATE OF
Land Survey Monuments situated in Section 32, Township 86 North, Range 3 East
of the Fifth Principal Meridian, Jackson County, Iowa.
Previously recorded (NONE OF RECORD)
BOOK, PAGE / DIST. NO. / CORNER, S. 100

Monument Description and Remarks: THE W1/4 CORNER OF SECTION 32 WAS ESTABLISHED AT THE
INTERSECTION OF OCCUPATION FENCES SOUTH AND EAST OF THE CORNER. THE CENTER OF SECTION 32 WAS ESTABLISHED AT THE
INTERSECTION OF A LINE FROM THE W1/4 CORNER TO THE E1/4 CORNER AND AT A LOCATION TO BEST FIT THE OCCUPATION
FENCE NORTH, SOUTH AND WEST OF THE CENTER. THE NW CORNER OF THE SW1/4 OF THE SW1/4 OF SECTION 32 WAS
ESTABLISHED ON LINE BETWEEN THE SW CORNER TO THE W1/4 CORNER OF SAID SECTION 32 AND IN LINE WITH AN OCCUPATION
FENCE WEST OF THE CORNER. THE NE CORNER OF THE SE1/4 OF THE SW1/4 OF SECTION 32 WAS ESTABLISHED AT THE
MIDPOINT OF A LINE FROM THE E1/4 CORNER TO THE CENTER OF SAID SECTION 32.

PLAN - VIEW



I hereby certify that this land surveying document was prepared and the related survey work was performed by me or under my direct personal supervision and that I am a duly licensed Land Surveyor under the laws of the State of Iowa.

David P. Schneider 12/30/2019
David P. Schneider P.L.S. #14417 Date:
My license renewal date is December 31, 2019.
Pages or sheets covered by this easl: THIS SHEET ONLY

SCHNEIDER
Land Surveying & Planning, Inc.
P.O. Box 128 Farley, Iowa 52048
Ph. #563-744-3631 daves@youaq.net



List Corners to be Indexed

Corners	Section	Twp	Range
CENTER	32	86N	3E
W1/4 CORNER	32	86N	3E
NW CORNER SW1/4, SW1/4	32	86N	3E
NE CORNER SE1/4, SW1/4	32	86N	3E

JOB NO. 2346PS



Document 20-25

Type 15 001 Pages 1
 Date 1/02/2020 Time 10:30 AM
 Rec Amt \$7.00

ARLENE SCHAUF, RECORDER/REGISTRAR
 JACKSON COUNTY IOWA

Prepared by: SCHNEIDER Land Surveying and Planning, Inc. P.O. Box 128 Farley, Iowa 52046 563-744-3631

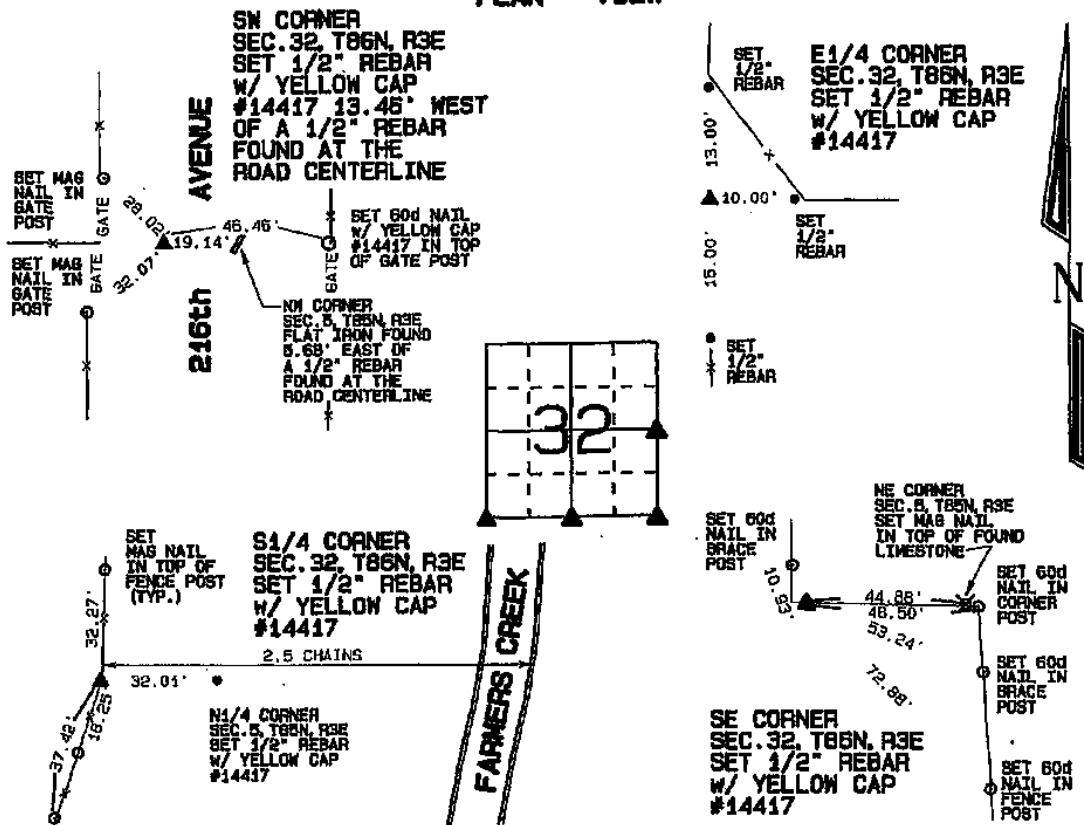
UNITED STATES PUBLIC LAND SURVEY CORNER CERTIFICATE OF

Land Survey Monuments situated in Section 32, Township 86 North, Range 3 East of the Fifth Principal Meridian, Jackson County, Iowa.
 Previously recorded (NONE OF RECORD)

BOOK, PAGE / DIST. NO. / CERTIFIC. NO.

Monument Description and Remarks: THE SW CORNER OF SECTION 32 WAS ESTABLISHED 29 LINKS WEST OF A FLAT IRON FOUND AT THE NORTHWEST CORNER OF SECTION 5, T86N, R3E AS DESCRIBED IN THE SLO NOTES. THE E1/4 CORNER OF SECTION 32 WAS ESTABLISHED AS OCCUPIED BY FENCES NORTH, SOUTH AND EAST OF THE CORNER. THE S1/4 CORNER OF SECTION 32 WAS ESTABLISHED ON LINE FROM THE NE CORNER TO THE NW CORNER OF SECTION 5, T86N, R3E AND 2.5 CHAINS WEST OF THE EAST BANK OF FARMERS CREEK AS INDICATED IN THE SLO NOTES. THE SE CORNER OF SECTION 32 WAS ESTABLISHED ON LINE FROM THE NE CORNER OF SECTION 5, T86N, R3E AND 58 LINKS WEST OF THE LIMESTONE FOUND AT THE NE CORNER OF SAID SECTION 5.

PLAN - VIEW



I hereby certify that this land surveying document was prepared and the related survey work was performed by me or under my direct personal supervision and that I am a duly licensed Land Surveyor under the laws of the State of Iowa.

David P. Schneider 12/30/2019
 David P. Schneider P.L.S. #14417 Date:
 My license renewal date is December 31, 2019.

Pages or sheets covered by this seal: THIS SHEET ONLY

SCHNEIDER
 Land Surveying & Planning, Inc.
 P.O. Box 128 Farley, Iowa 52046
 Ph. #563-744-3631 david@yousq.net



List Corners to be Indexed

Corners	Section	Twp	Range
SW CORNER	32	86N	3E
E1/4 CORNER	32	86N	3E
S1/4 CORNER	32	86N	3E
SE CORNER	32	86N	3E

JOB NO. 2346PS