



Document 15-3930

Book 2015 Page 3930 Type 15 001 Pages 1  
Date 11/24/2015 Time 11:58 AM  
Rec Amt \$7.00

ARLENE SCHAUF, RECORDER/REGISTRAR  
JACKSON COUNTY IOWA

Prepared by: SCHNEIDER Land Surveying and Planning, Inc. P.O. Box 128 Farley, Iowa 52046 563-744-3631

### UNITED STATES PUBLIC LAND SURVEY CORNER CERTIFICATE OF

Land Survey Monuments situated in Section 26, Township 86 North, Range 3 East  
of the Fifth Principal Meridian, Jackson County, Iowa.

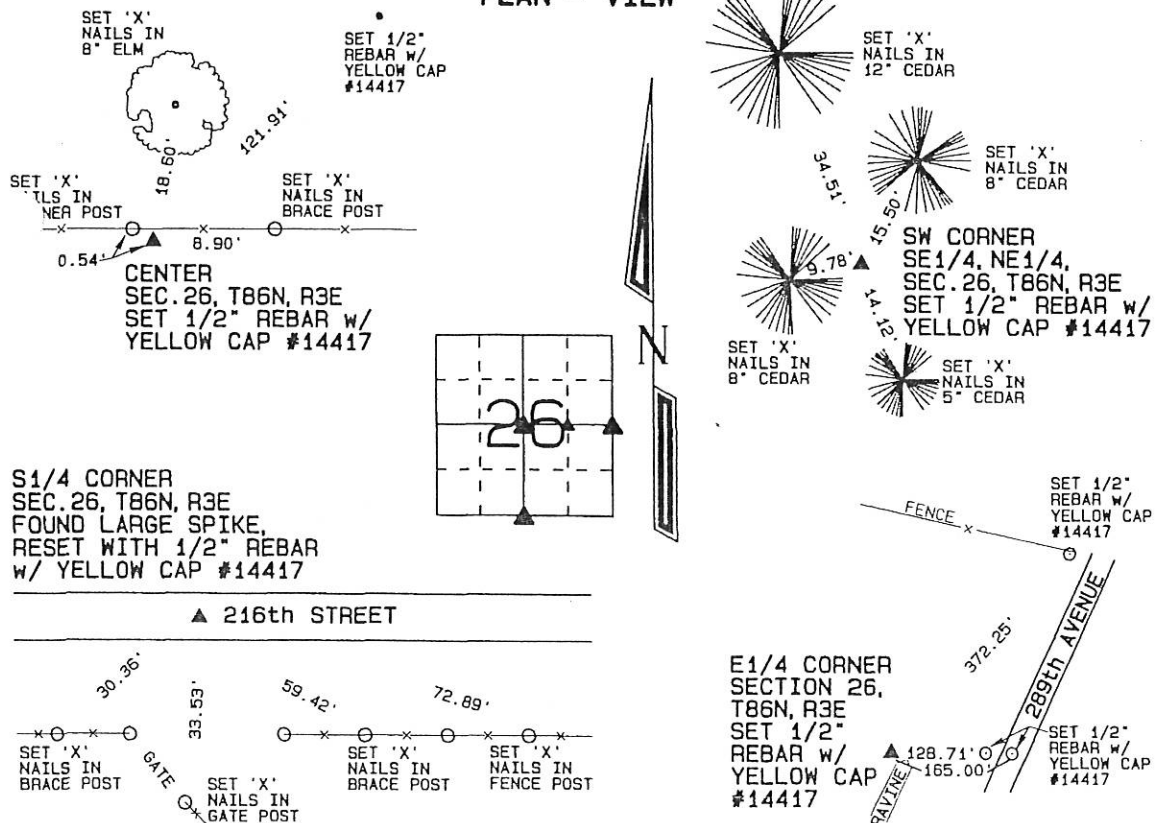
Previously recorded (NONE OF RECORD)

(BOOK, PAGE / DIST. NO. / CARDSET, SLIDE)

(Show reason for preparing this certificate, the evidence and detailed procedures used in establishing the corner positions and monumentation found or placed.)

Monument Description and Remarks: THE CENTER OF SECTION 26, T86N, R3E WAS ESTABLISHED IN THE EAST/WEST OCCUPATION FENCE AND BY DOUBLING THE DISTANCE FROM THE W1/4 CORNER OF SAID SECTION 26 THROUGH THE QUARTER-QUARTER OCCUPATION EVIDENCE A QUARTER MILE WEST OF THE CENTER OF SAID SECTION 26. THE SW CORNER OF THE SE1/4 OF THE NE1/4 OF SECTION 26, T86N, R3E WAS ESTABLISHED 264' EAST OF A LIMESTONE FOUND AT A CORNER POST. A LARGE SPIKE WAS FOUND AT THE S1/4 CORNER OF SECTION 26, T86N, R3E AND REPLACED WITH A 1/2" REBAR W/ YELLOW CAP #14417. THE E1/4 CORNER OF SECTION 26, T86N, R3E WAS ESTABLISHED 2.5 CHAINS WEST OF THE CENTERLINE OF 289th AVENUE, APPROXIMATELY 20.45 CHAINS EAST OF THE QUARTER-QUARTER CORNER TO THE WEST AND APPROXIMATELY 7.28 CHAINS SOUTH OF THE EAST/WEST PORTION OF THE FENCE LINE NORTHWEST OF THE CORNER.

#### PLAN - VIEW



I hereby certify that this land surveying document was prepared and the related survey work was performed by me or under my direct personal supervision and that I am a duly licensed land surveyor under the laws of the State of Iowa.

David P. Schneider P.L.S. #14417 Date:  
license renewal date is December 31, 2015.

Pages or sheets covered by this seal: THIS SHEET ONLY

#### List Corners to be Indexed

Corners	Section	Twp	Range
CENTER	26	86N	3E
SW CORNER SE1/4, NE1/4	26	86N	3E
S1/4 CORNER	26	86N	3E
E1/4 CORNER	26	86N	3E

**SCHNEIDER**  
Land Surveying & Planning, Inc.  
P.O. Box 128 Farley, Iowa 52046  
Ph. #563-744-3631 Fax #563-744-3629

