



Document 05-4673

Book 2 Page 399 Type 06 023 Pages 1

Date 11/17/2005 Time 10:33 AM

Rec Amt \$7.00

PHYLLIS M. GERLACH, RECORDER

JACKSON COUNTY IOWA

Prepared by: SCHNEIDER Land Surveying and Planning, Inc. P.O. Box 128 Farley, Iowa 52046 563-744-3631

### UNITED STATES PUBLIC LAND SURVEY CORNER CERTIFICATE OF

Land Survey Monuments situated in Section 1, Township 86 North, Range 3 East of the Fifth Principal Meridian, Jackson County, Iowa.

Previously recorded (NONE OF RECORD)

(BOOK, PAGE / INST. NO. / CABINET, SLIDE)

(Show reason for preparing this certificate, the evidence and detailed procedures used in establishing the corner positions and monumentation found or placed.)

Monument Description and Remarks: THE NW CORNER OF SEC. 1, T86N, R3E WAS PLACED 95 LINKS (62.70')

WEST OF THE SE CORNER OF SECTION 35, T87N, R3E AS SHOWN ON THE ORIGINAL PLAT OF RICHLAND TOWNSHIP.

THE NE CORNER OF THE NW FRL 1/4 OF THE NW FRL 1/4 OF SEC. 1, T86N, R3E WAS PLACED AT A PROPORTIONED DISTANCE

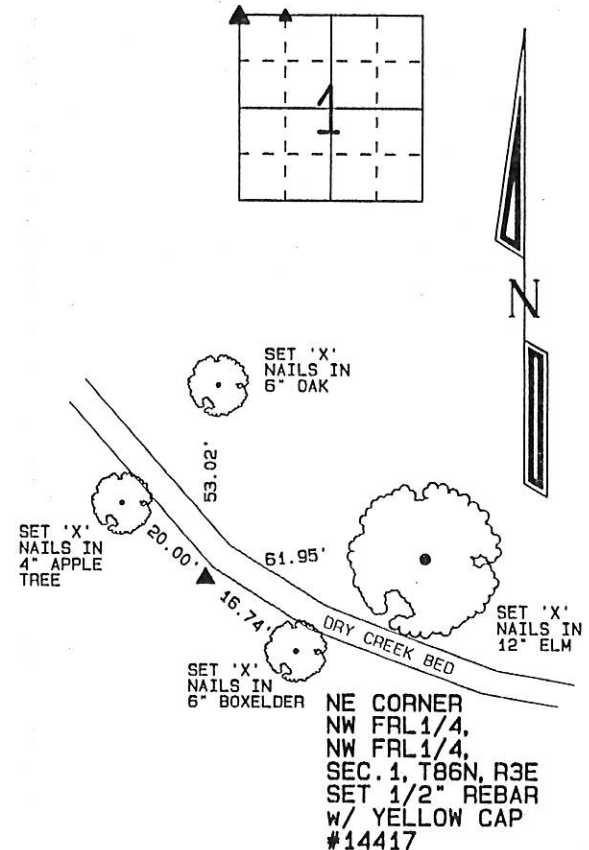
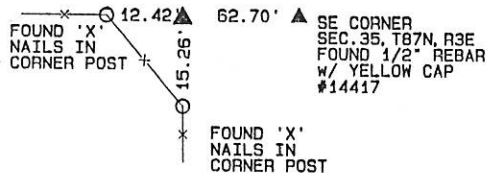
ALONG THE NORTH LINE OF SAID SECTION 1 AND IN LINE WITH THE SW CORNER AND THE S1/4 CORNER OF SECTION 36,

T87N, R3E.

### PLAN - VIEW

(Show a minimum of three reference ties to durable physical objects, relevant monuments and physical conditions that will enable recovery of the corner.)

NW CORNER  
SEC. 1, T86N, R3E  
SET 1/2" REBAR  
w/ YELLOW CAP #14417



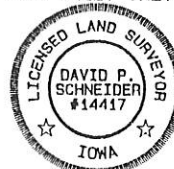
I hereby certify that this land surveying document was prepared and the related survey work was performed by me or under my direct personal supervision and that I am a duly licensed Land Surveyor under the laws of the State of Iowa.

*David P. Schneider* 11/16/2005  
David P. Schneider P.L.S. #14417 Date:  
My license renewal date is December 31, 2005.

Pages or sheets covered by this seal: THIS SHEET ONLY

**SCHNEIDER**  
Land Surveying & Planning, Inc.

P.O. Box 128 Farley, Iowa 52046  
Ph. #563-744-3631 Fax #563-744-3629



#### List Corners to be Indexed

Corners	Section	Twp	Range
NW CORNER	1	86N	3E
NE CORNER NW 1/4, NW 1/4	1	86N	3E

JOB NO. 837A



Document 05-5017

Book 2 Page 403 Type 06 023 Pages 1  
 Date 12/13/2005 Time 10:07 AM  
 Rec Amt \$7.00

PHYLLIS M. GERLACH, RECORDER  
 JACKSON COUNTY IOWA

Prepared by: SCHNEIDER Land Surveying and Planning, Inc. P.O. Box 128 Farley, Iowa 52046 563-744-3631

# UNITED STATES PUBLIC LAND SURVEY CORNER CERTIFICATE OF

Land Survey Monuments situated in Section 1, Township 86 North, Range 3 East  
 of the Fifth Principal Meridian, Jackson County, Iowa.  
 Previously recorded (NONE OF RECORD)

(Show reason for preparing this certificate, the evidence and detailed procedures used in establishing the corner positions and monumentation found or placed.)

Monument Description and Remarks: THE SW CORNER OF THE NW FRL1/4 OF THE NW FRL1/4 OF SEC.1.

T86N, R3E WAS ESTABLISHED ON A LINE FROM THE W1/4 CORNER TO THE NW CORNER OF SAID SECTION 1 AND AT A PROPORTIONED DISTANCE BETWEEN THE CORNERS.

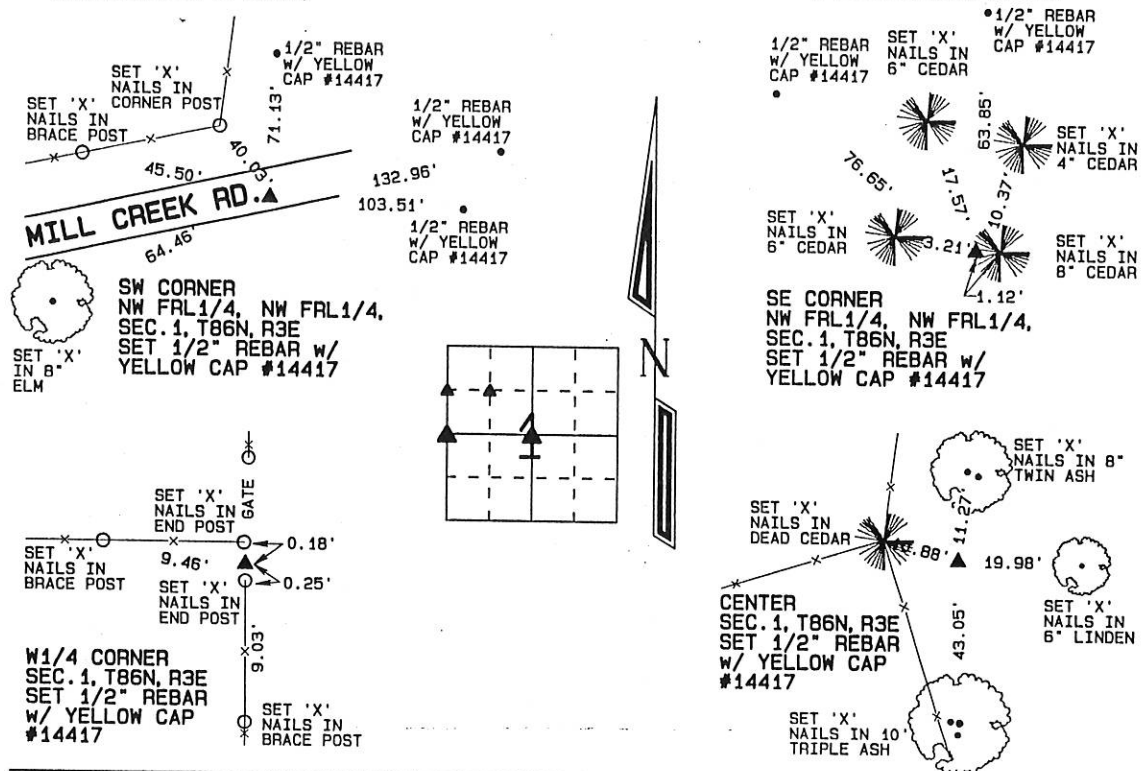
THE SE CORNER OF THE NW FRL1/4 OF THE NW FRL1/4 OF SEC.1, T86N, R3E WAS ESTABLISHED AT THE THEORETICAL CENTER OF THE NW FRL1/4 OF SAID SECTION 1.

THE W1/4 CORNER OF SEC.1, T86N, R3E WAS ESTABLISHED AS FENCED AND OCCUPIED.

THE CENTER OF SEC.1, T86N, R3E WAS REESTABLISHED AS INDICATED ON COUNTY RIGHT OF WAY DESCRIPTIONS, ASBUILT PLANS AND MONUMENTATION FROM THE GRADING PROJECT ALONG MILL CREEK ROAD IN THE 1960's.

## PLAN - VIEW

(Show a minimum of three reference ties to durable physical objects, relevant monuments and physical conditions that will enable recovery of the corner.)



I hereby certify that this land surveying document was prepared and the related survey work was performed by me or under my direct personal supervision and that I am a duly licensed Land Surveyor under the laws of the State of Iowa.

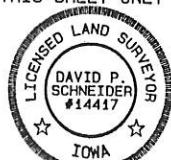
David P. Schneider P.L.S. #14417

Date:

My license renewal date is December 31, 2005.

Pages or sheets covered by this seal: THIS SHEET ONLY

**SCHNEIDER**  
 Land Surveying & Planning, Inc.  
 P.O. Box 128 Farley, Iowa 52046  
 Ph. #563-744-3631 Fax#563-744-3629



## List Corners to be Indexed

Corners	Section	Twp	Range
SW CORNER NW FRL1/4, NW FRL1/4	1	86N	3E
SE CORNER NW FRL1/4, NW FRL1/4	1	86N	3E
W1/4	1	86N	3E
CENTER	1	86N	3E

JOB NO. 837A

Book 2 Page 403