



Document 05-2370

Book 2 Page 361 Type 06 023 Pages 1
Date 6/16/2005 Time 10:07 AM
Rec Amt \$7.00

PHYLLIS M. GERLACH, RECORDER
JACKSON COUNTY IOWA

PREPARED BY: MICHAEL J. WEBER, WEBER SURVEYING, LLC, 26789 46TH AVE, BERNARD, IA 52032 (563) 879-4173

UNITED STATES PUBLIC LAND SURVEY CORNER CERTIFICATE OF

LAND SURVEY MONUMENTS SITUATED IN SECTION 18, TOWNSHIP 86 NORTH, RANGE 3 EAST
OF THE FIFTH PRINCIPAL MERIDIAN, JACKSON COUNTY, IOWA.
PREVIOUSLY RECORDED NONE UNLESS OTHERWISE NOTED

(book, page, document number, etc)

(Show reason for preparing this certificate, the evidence and detailed procedures used in establishing the corner positions and monumentation found or placed.)

Monument Description and Remarks:

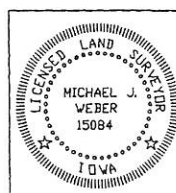
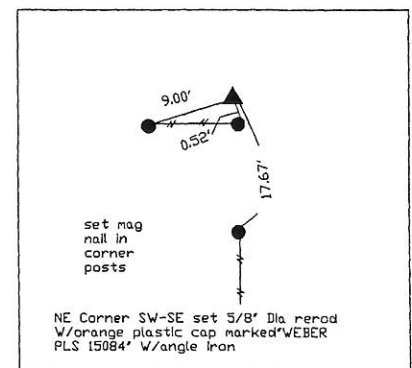
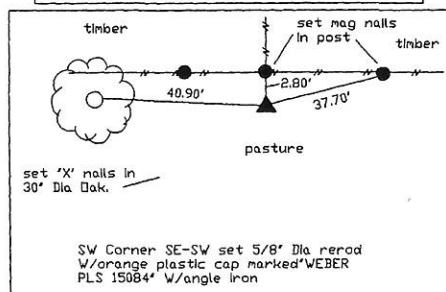
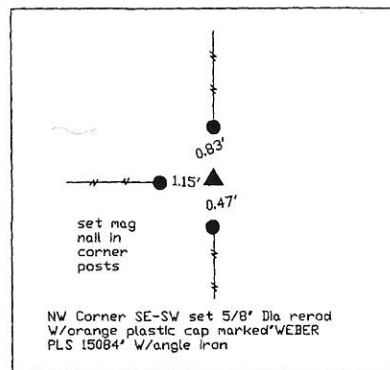
SW Corner of the Southeast 1/4 of the Southwest 1/4, established corner online between the SW Corner and the South 1/4 of Section 18 and in line with the occupation fenceline running North, set 5/8" Dia. rerod w/orange cap marked 'WEBER PLS 15084'

NW Corner of the Southeast 1/4 of the Southwest 1/4, established corner at the intersecting occupation fencelines, set 5/8" Dia. rerod w/orange cap marked 'WEBER PLS 15084'

NE Corner, of the Southwest 1/4 of the Southeast 1/4, established corner at the intersecting fencelines, set 5/8" Dia. rerod w/orange cap marked 'WEBER PLS 15084'

PLAN - VIEW

(Show a minimum of three reference ties to durable physical objects, relevant monuments and physical conditions that will enable recovery of the corner.)



I HEREBY CERTIFY THAT THIS LAND SURVEYING DOCUMENT WAS PREPARED AND THE RELATED SURVEY WORK WAS PERFORMED BY ME OR UNDER MY DIRECT PERSONAL SUPERVISION AND THAT I AM A DULY LICENSED LAND SURVEYOR UNDER THE LAWS OF THE STATE OF IOWA.

Michael J. Weber June 9, 2005
MICHAEL J. WEBER (DATE)

LICENSE NUMBER 15084

MY LICENSE RENEWAL DATE IS DECEMBER 31, 2005

SHEETS COVERED BY THIS SEAL: 1

List Corners to be Indexed		
Corner	Sec	Twp Range
SW Corner	18	86N 3E
SE-SW		
NW Corner	18	86N 3E
SE-SW		
NE Corner	18	86N 3E
SW-SE		

Book 2 Page 361



Document 15-2877

Book 2015 Page 2877 Type 15 001 Pages 1

Date 8/28/2015 Time 9:11 AM

Rec Amt \$7.00

ARLENE SCHAUF, RECORDER/REGISTRAR
JACKSON COUNTY IOWA

PREPARED BY: MICHAEL J. WEBER, WEBER SURVEYING, LLC, 26789 46TH AVE., BERNARD, IA 52032 (563) 879-4173

UNITED STATES PUBLIC LAND SURVEY CORNER CERTIFICATE OF

LAND SURVEY MONUMENTS SITUATED IN SECTION 18, TOWNSHIP 86 NORTH, RANGE 3 EAST
OF THE FIFTH PRINCIPAL MERIDIAN, JACKSON COUNTY, IOWA.
PREVIOUSLY RECORDED SEE NOTES BELOW

(book, page, document number, etc.)

(Show reason for preparing this certificate, the evidence and detailed procedures used in establishing the corner positions and monumentation found or placed.)

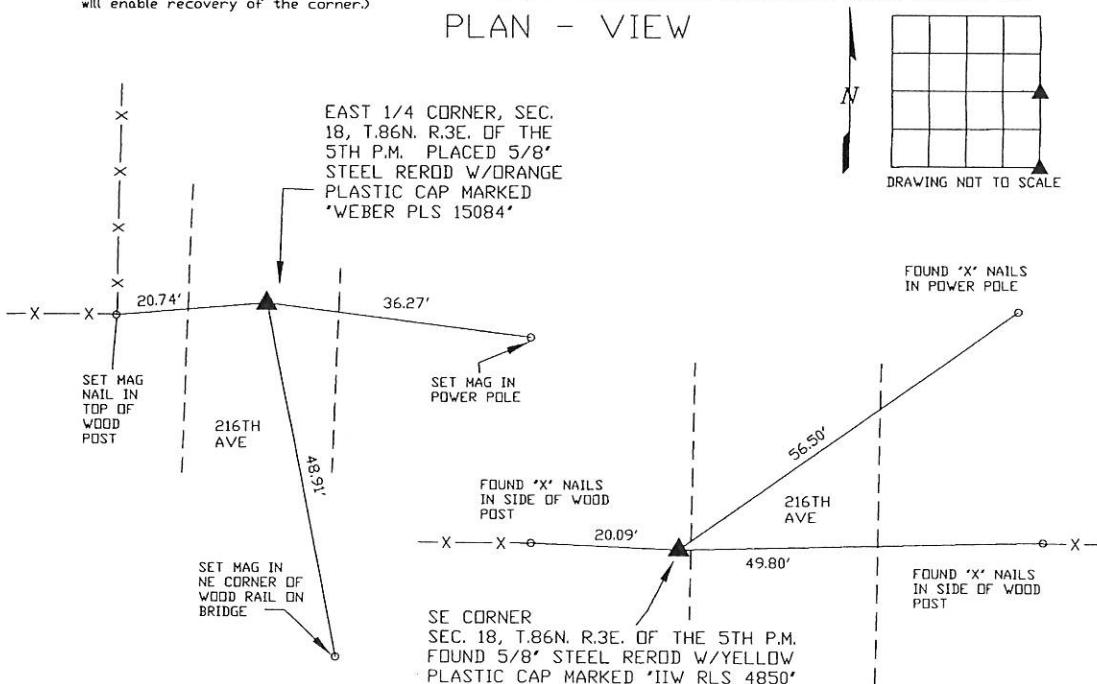
Monument Description and Remarks:

-EAST 1/4 CORNER, SEC. 18, T.86N. R.3E. OF THE 5TH P.M. PLACED 5/8" STEEL ROD W/ORANGE PLASTIC CAP MARKED "WEBER PLS 15084". ESTABLISHED CORNER IN THE CENTER OF 216TH AVENUE MIDWAY BETWEEN THE NE CORNER AND THE SE CORNER OF SAID SECTION 18

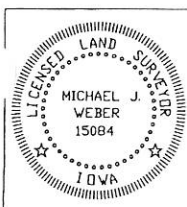
-SE CORNER SEC. 18 T.86N. R.3E. OF THE 5TH P.M. FOUND 5/8" STEEL ROD W/YELLOW PLASTIC CAP MARKED "IIV RLS 4850" PREVIOUSLY RECORDED IN BOOK 1 PAGE 184

(Show a minimum of three reference ties to durable physical objects, relevant monuments and physical conditions that will enable recovery of the corner.)

PLAN - VIEW



DWG. NO. 15016 ALTHOFF



I HEREBY CERTIFY THAT THIS LAND SURVEYING DOCUMENT WAS
PREPARED AND THE RELATED SURVEY WORK WAS PERFORMED BY ME OR
UNDER MY DIRECT PERSONAL SUPERVISION AND THAT I AM A DULY
LICENSED LAND SURVEYOR UNDER THE LAWS OF THE STATE OF IOWA.

MICHAEL J. WEBER
LICENSE NUMBER 15084

MY LICENSE RENEWAL DATE IS DECEMBER 31, 2015

SHEETS COVERED BY THIS SEAL: THIS SHEET

List Corners to be Indexed

Corner	Sec	Twp	Range
EAST 1/4 COR.	18	86N	3E
SE CORNER	18	86N	3E