



Document 05-2359

Book 2 Page 359 Type 06 023 Pages 1
Date 6/15/2005 Time 12:20 PM
Rec Amt \$7.00

PHYLLIS M. GERLACH, RECORDER
JACKSON COUNTY IOWA

Prepared by: SCHNEIDER Land Surveying and Planning, Inc. P.O. Box 128 Farley, Iowa 52046 563-744-3631

UNITED STATES PUBLIC LAND SURVEY CORNER CERTIFICATE OF

Land Survey Monuments situated in Section 16, Township 86 North, Range 3 East
of the Fifth Principal Meridian, Jackson County, Iowa.
Previously recorded (NONE OF RECORD)

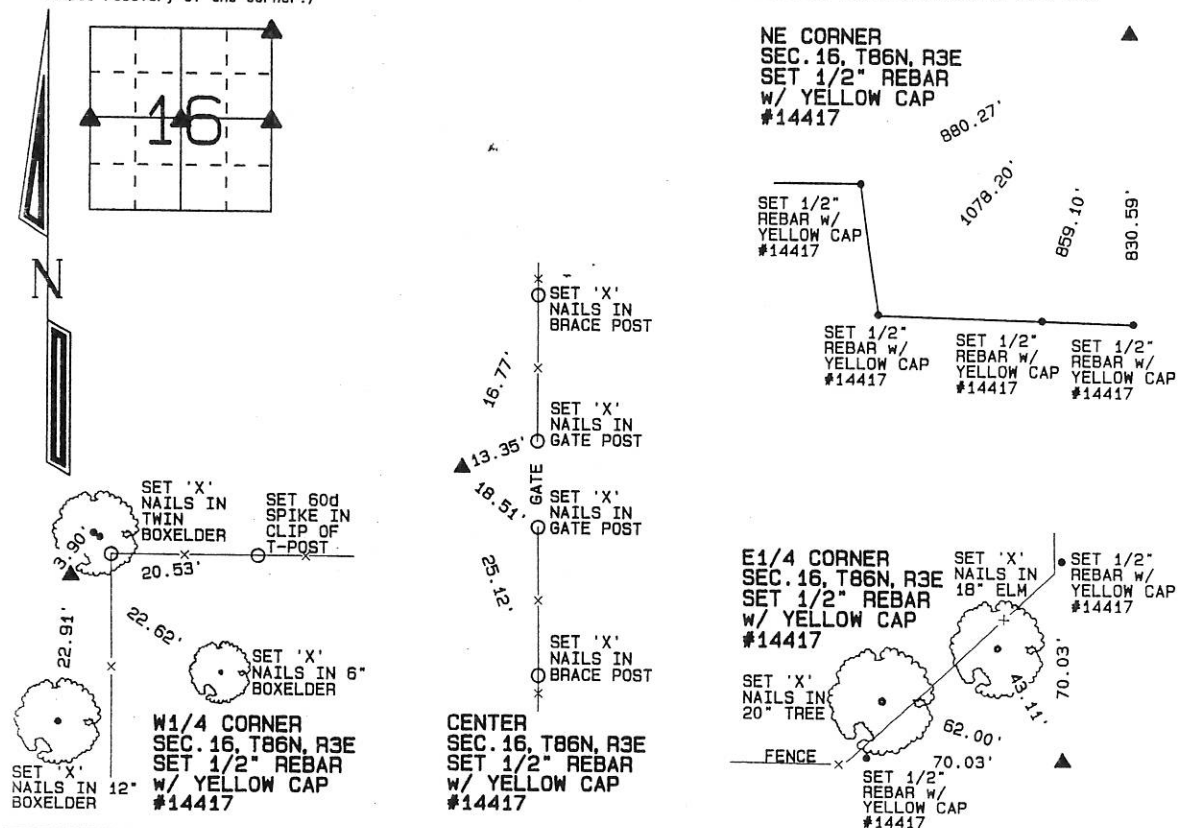
(BOOK, PAGE / INST. NO. / CABINET, SLIDE)

(Show reason for preparing this certificate, the evidence and detailed procedures used in establishing the corner positions and monumentation found or placed.)

Monument Description and Remarks: A 3"x8"x15" STONE WAS FOUND LYING FLAT WITH OLD FENCING WIRE AT THE NE CORNER OF SECTION 16, T86N, R3E. A 1/2" REBAR W/ YELLOW CAP #14417 WAS SET IN THE LOCATION OF THE STONE AND THE STONE WAS PLACED IN THE HOLE NEXT TO THE REBAR. THE REBAR WAS TIED AND USED AS THE NE CORNER. THE W1/4 CORNER OF SECTION 16, T86N, R3E WAS ESTABLISHED USING OCCUPATION EVIDENCE LOCATED SOUTH AND EAST OF THE CORNER. THE CENTER OF SECTION 16, T86N, R3E WAS ESTABLISHED AT THE INTERSECTION OF A LINE FROM THE N1/4 CORNER TO THE S1/4 CORNER WITH A LINE FROM THE W1/4 CORNER TO THE E1/4 CORNER. THE E1/4 CORNER OF SECTION 16, T86N, R3E WAS ESTABLISHED USING OCCUPATION EVIDENCE LOCATED WEST AND NORTH OF THE CORNER.

PLAN - VIEW

(Show a minimum of three reference ties to durable physical objects, relevant monuments and physical conditions that will enable recovery of the corner.)



I hereby certify that this land surveying document was prepared and the related survey work was performed by me or under my direct personal supervision and that I am a duly licensed Land Surveyor under the laws of the State of Iowa.

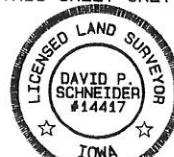
David P. Schneider P.L.S. #14417 Date: 6/7/2005

My license renewal date is December 31, 2005.

Pages or sheets covered by this seal: THIS SHEET ONLY

SCHNEIDER
Land Surveying & Planning, Inc.

P.O. Box 128 Farley, Iowa 52046
Ph. #563-744-3631 Fax #563-744-3629



List Corners to be Indexed

Corners	Section	Twp	Range
NE CORNER	16	86N	3E
W1/4 CORNER	16	86N	3E
CENTER	16	86N	3E
E1/4 CORNER	16	86N	3E

Book 2 Page 359

JOB NO. 775