

PHYLLIS M. GERLACH, RECORDER  
JACKSON COUNTY IOWA

UNITED STATES PUBLIC LAND SURVEY CORNER CERTIFICATE OF

(BOOK, PAGE / INST. NO. / CABINET, SLIDE)

Monument Description and Remarks: THE NW CORNER OF SECTION 14, T86N, R3E WAS ESTABLISHED AT THE

PLAN - VIEW

Corners	Section	Twp	Range
NW CORNER	14	86N	3E
N1/4 CORNER	14	86N	3E
W1/4 CORNER	14	86N	3E
CENTER	14	86N	3E

A circular professional seal for David P. Schneider, a Licensed Land Surveyor in Iowa. The seal features the text "LICENSED LAND SURVEYOR" around the top inner edge and "IOWA" at the bottom. In the center, it reads "DAVID P. SCHNEIDER" and "#14417". Two five-pointed stars are positioned on the left and right sides of the seal.

JOB NO. 8458



Document 06-589

Book 2 Page 420 Type 06 023 Pages 1  
Date 2/15/2006 Time 9:19 AM  
Rec Amt \$7.00

PHYLLIS M. GERLACH, RECORDER  
JACKSON COUNTY IOWA

Prepared by: SCHNEIDER Land Surveying and Planning, Inc. P.O. Box 128 Farley, Iowa 52046 563-744-3631

## UNITED STATES PUBLIC LAND SURVEY CORNER CERTIFICATE OF

Land Survey Monuments situated in Section 14, Township 86 North, Range 3 East  
of the Fifth Principal Meridian, Jackson County, Iowa.  
Previously recorded (NONE OF RECORD)

(Show reason for preparing this certificate, the evidence and detailed procedures used in establishing the corner positions and monumentation found or placed.)

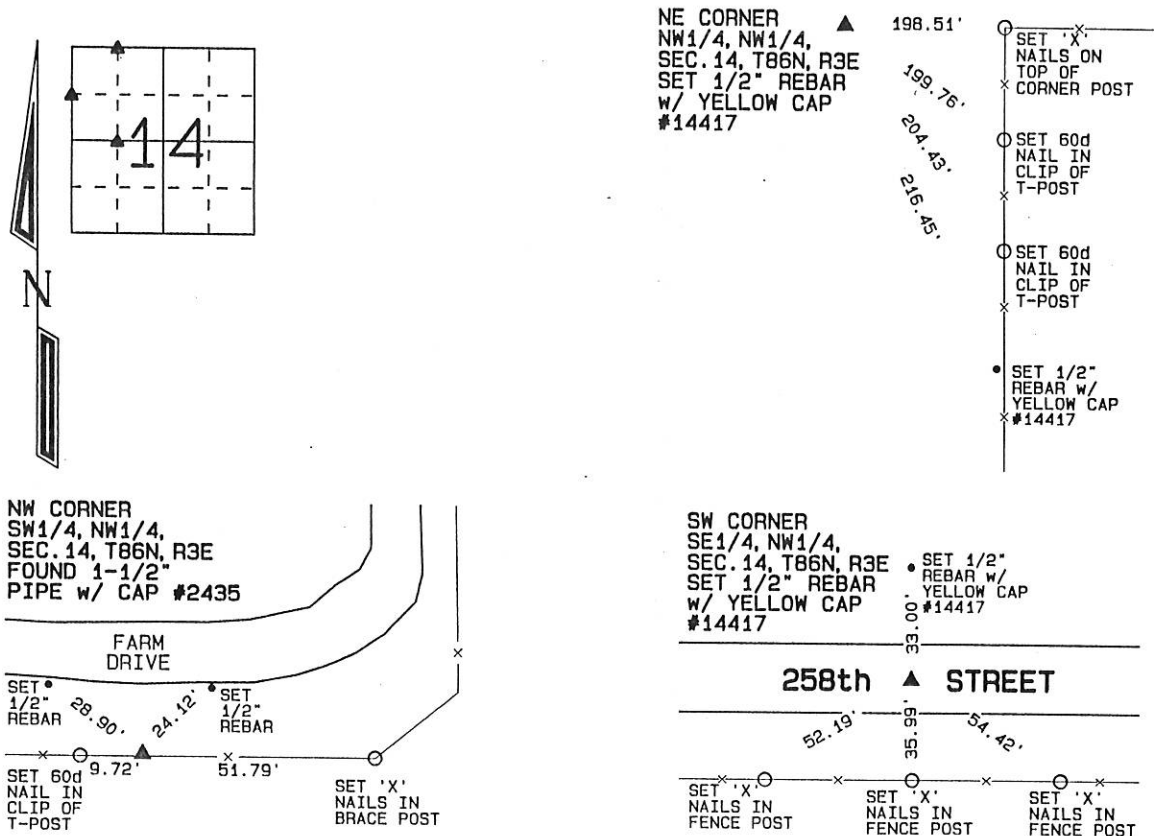
Monument Description and Remarks: THE NE CORNER OF THE NW1/4 OF THE NW1/4 OF SECTION 14, T86N, R3E  
WAS ESTABLISHED AT THE MIDPOINT OF A LINE FROM THE NW CORNER TO THE N1/4 CORNER OF SAID SECTION 14.

A 1-1/2" PIPE WITH CAP #2435 WAS FOUND AT THE NW CORNER OF THE SW1/4 OF THE NW1/4 OF SECTION 14, T86N, R3E.  
THE PIPE WAS TIED AND USED AS THE CORNER.

THE SW CORNER OF THE SE1/4 OF THE NW1/4 OF SECTION 14, T86N, R3E WAS ESTABLISHED AT THE MIDPOINT OF A LINE FROM  
THE W1/4 CORNER TO THE CENTER OF SAID SECTION 14.

### PLAN - VIEW

(Show a minimum of three reference ties to durable physical objects, relevant monuments and physical conditions that will enable recovery of the corner.)



I hereby certify that this land surveying document was prepared and the related survey work was performed by me or under my direct personal supervision and that I am a duly licensed Land Surveyor under the laws of the State of Iowa.

*David P. Schneider* 1/30/2006  
David P. Schneider P.L.S. #14417 Date:  
My license renewal date is December 31, 2007.

Pages or sheets covered by this seal: THIS SHEET ONLY

**SCHNEIDER**  
Land Surveying & Planning, Inc.

P.O. Box 128 Farley, Iowa 52046  
Ph. #563-744-3631 Fax #563-744-3629



#### List Corners to be Indexed

Corners	Section	Twp	Range
NE CORNER NW1/4, NW1/4	14	86N	3E
NW CORNER SW1/4, NW1/4	14	86N	3E
SW CORNER SE1/4, NW1/4	14	86N	3E

JOB NO. 8458



Document 07-1943

Book 2 Page 558 Type 15 001 Pages 1  
Date 4/19/2007 Time 10:44 AM  
Rec Amt \$7.00

ARLENE SCHAUF, RECORDER  
JACKSON COUNTY IOWA

Prepared by: SCHNEIDER Land Surveying and Planning, Inc. P.O. Box 128 Farley, Iowa 52046 563-744-3631

### UNITED STATES PUBLIC LAND SURVEY CORNER CERTIFICATE OF

Land Survey Monuments situated in Section 14, Township 86 North, Range 3 East  
of the Fifth Principal Meridian, Jackson County, Iowa.

Previously recorded (NONE OF RECORD)  
(BOOK, PAGE / INST. NO. / CABINET, SLIDE)

(Show reason for preparing this certificate, the evidence and detailed procedures used in establishing the corner positions and monumentation found or placed.)

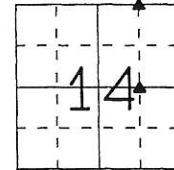
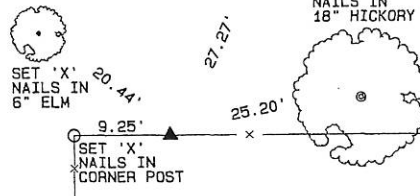
#### Monument Description and Remarks:

THE NE CORNER OF THE NW1/4 OF THE NE1/4 OF SECTION 14, T86N, R3E WAS ESTABLISHED ON A LINE FROM THE N1/4 CORNER TO THE NE CORNER OF SAID SECTION 14 AND IN LINE WITH OCCUPATION EVIDENCE EAST, WEST, AND SOUTH OF THE CORNER.  
THE SE CORNER OF THE SW1/4 OF THE NE1/4 OF SECTION 14, T86N, R3E WAS ESTABLISHED ON A LINE FROM THE CENTER TO THE W1/4 CORNER OF SAID SECTION 14 AND IN LINE WITH OCCUPATION EVIDENCE TO THE NORTH OF THE CORNER.

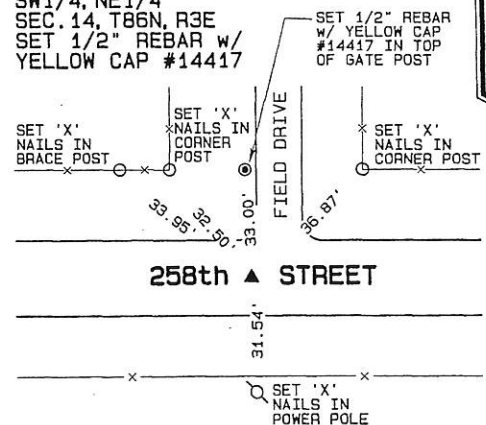
### PLAN - VIEW

(Show a minimum of three reference ties to durable physical objects, relevant monuments and physical conditions that will enable recovery of the corner.)

NE CORNER  
NW1/4, NE1/4  
SEC. 14, T86N, R3E  
SET 1/2" REBAR  
w/ YELLOW CAP  
#14417



SE CORNER  
SW1/4, NE1/4  
SEC. 14, T86N, R3E  
SET 1/2" REBAR w/  
YELLOW CAP #14417



258th STREET

I hereby certify that this land surveying document was prepared and the related survey work was performed by me or under my direct personal supervision and that I am a duly licensed Land Surveyor under the laws of the State of Iowa.

David P. Schneider P.L.S. #14417 Date: 4/19/2007  
My license renewal date is December 31, 2007.  
Pages or sheets covered by this seal: THIS SHEET ONLY

**SCHNEIDER**  
Land Surveying & Planning, Inc.  
P.O. Box 128 Farley, Iowa 52046  
Ph. #563-744-3631 Fax #563-744-3629



#### List Corners to be Indexed

Corners	Section	Twp	Range
NE CORNER NW1/4, NE1/4	14	86N	3E
SE CORNER SW1/4, NE1/4	14	86N	3E

JOB NO. 84501

Book 2 Page 558



Document 08-4250

Book 2 Page 640 Type 15 001 Pages 1  
Date 11/14/2008 Time 9:39 AM  
Rec Amt \$7.00

ARLENE SCHAUF, RECORDER/REGISTRAR  
JACKSON COUNTY IOWA

Prepared by Wm. Burger Land Surveyors 510 3rd Street West Court, Worthington, Iowa 52078 Phone 563 - 855 2028

### UNITED STATES PUBLIC LAND SURVEY CORNER CERTIFICATE

Land Survey Monuments situated in Section 14, Township 86N, Range 3E, of the Fifth Principal Meridian, Jackson County, Iowa. Previously recorded in SEE NOTE in the Office of the County Recorder

#### Monument Description and Remarks:

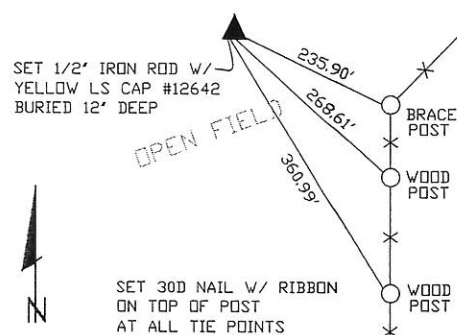
NE CORNER NW1/4 NW1/4 - SET 1/2" IRON ROD W/ YELLOW LS CAP #12642 - USED INFORMATION FROM PLAT PREVIOUSLY RECORDED IN THE OFFICE OF THE JACKSON COUNTY RECORDER IN BOOK 1-Q, PAGE 29 TO RE-ESTABLISH THIS CORNER

W1/4 CORNER - FOUND BRIDGE SPIKE

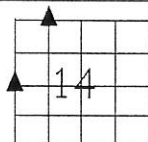
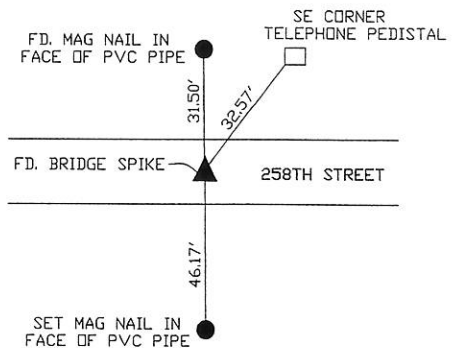
NOTE: THE NE CORNER NW1/4 NW1/4 WAS PREVIOUSLY RECORDED IN THE OFFICE OF THE JACKSON COUNTY RECORDER IN BOOK 2, PAGE 420, THE W1/4 CORNER WAS PREVIOUSLY RECORDED IN THE OFFICE OF THE JACKSON COUNTY RECORDER IN BOOK 2, PAGE 419

#### PLAN VIEW

NE CORNER NW1/4 NW1/4



W1/4 CORNER



SEC. 14 TWP. 86N RANGE 3E

#### CORNERS TO BE INDEXED

NE CORNER NW1/4 NW1/4	14	86N	3E
W1/4 CORNER	14	86N	3E



I hereby certify that this land surveying document was prepared and related survey work was performed by me or under my direct personal supervision and that I am a duly licensed Land Surveyor under the laws of the State of Iowa.

William H. Burger 11/23/08  
William H. Burger Date

License number 12642

My license renewal date is December 31, 2008

Pages or Sheets covered by this seal: Sheet 1 of 1

Book 2 Page 640